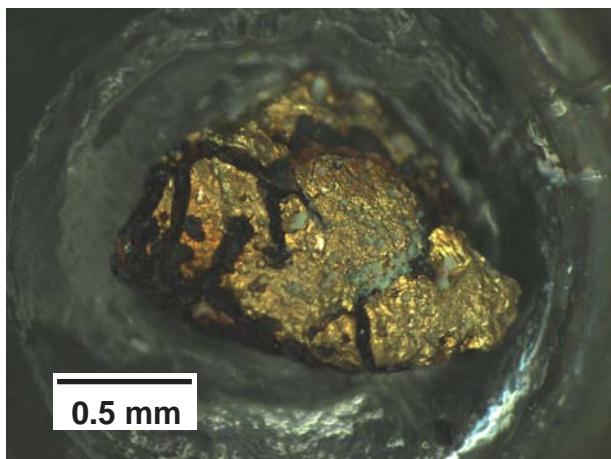


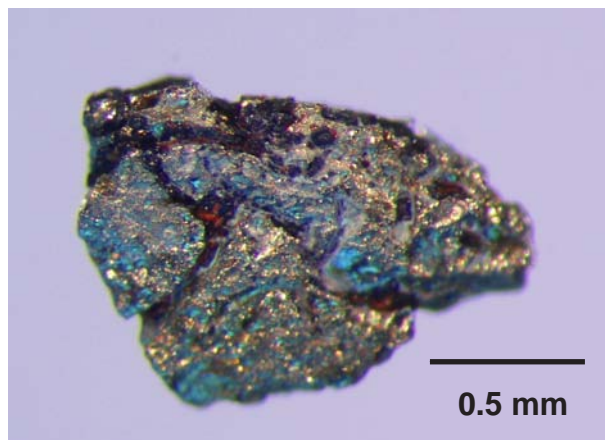
SPIKING GRAINS

RECOVERED GRAINS

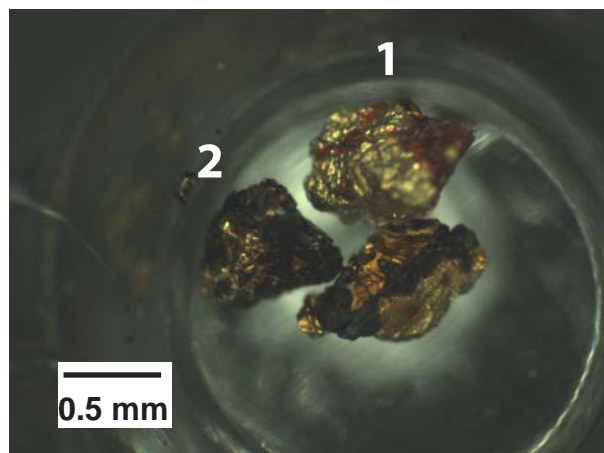
Chalcopyrite



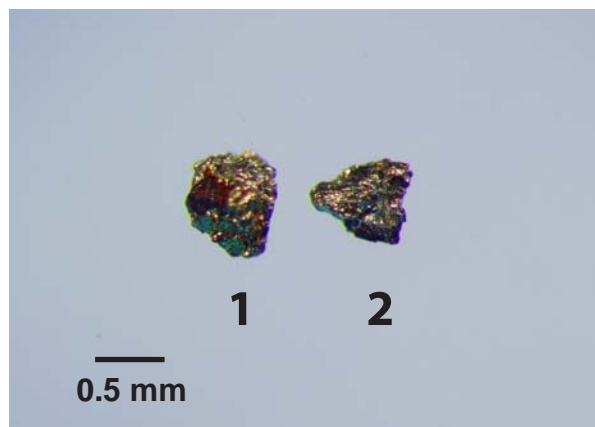
From original sample: 08BAKK168 (1-2 mm)



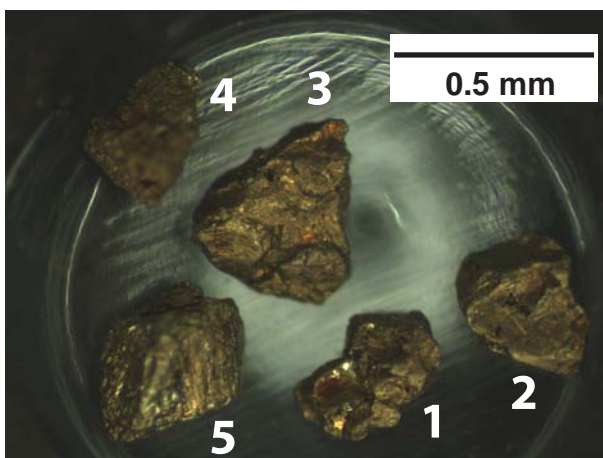
Spiked sample: 12PMA133A01 (1-2 mm)



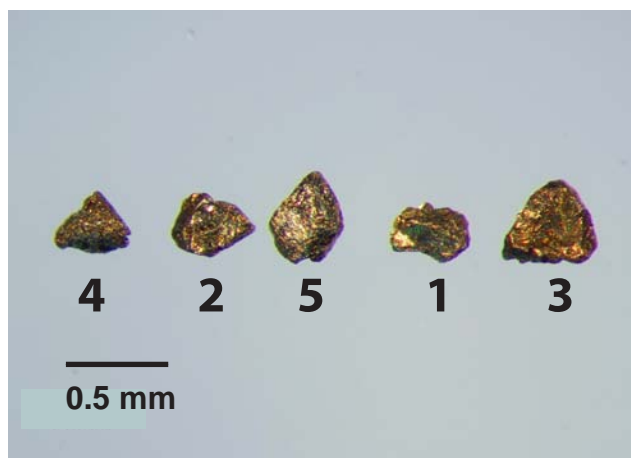
From original sample: 08BAKK168 (0.5-1 mm)



Spiked sample: 12PMA133A01 (0.5-1 mm)



From original sample 08BAK5096L
(0.25-0.5 mm)



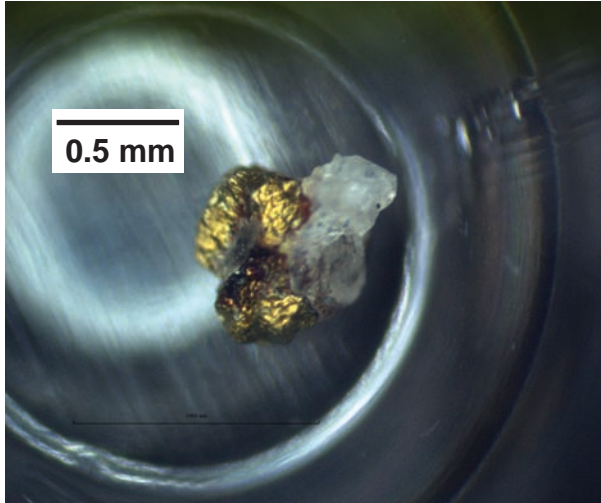
Spiked sample: 12PMA133A01 (0.25-0.5 mm)

Note: See appendix 4G for details; indicator mineral results of samples 08BAKK168 and 08BAK5096L reported in Kjarsgaard et al. (2013).

SPIKING GRAINS

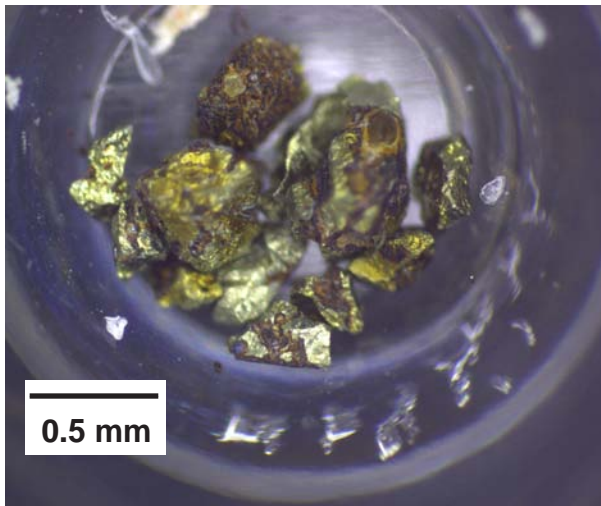
RECOVERED GRAINS

Chalcopyrite

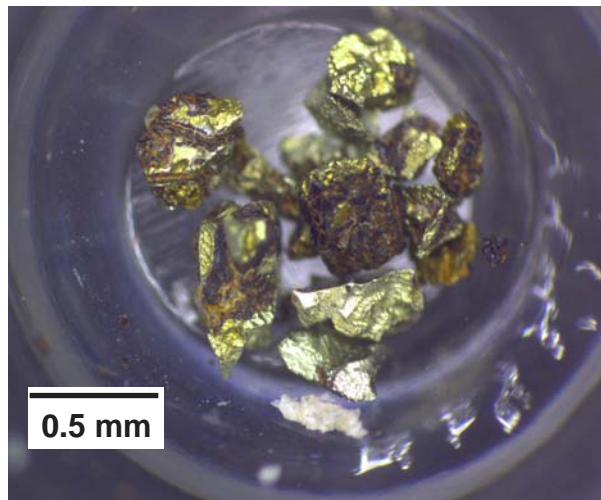


From original sample:
12PMA503A01 (0.5-1 mm)

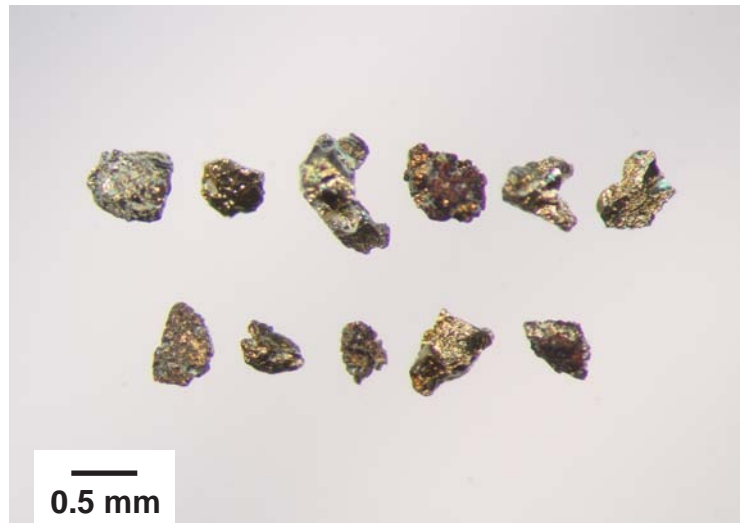
Not recovered; grain might have
broken in smaller fragments
during separation



From original sample:
12PMA503A01 (0.25-0.5 mm)



From original sample:
12PMA503A01 (0.25-0.5 mm)



Spiked sample: 13TFE001A01 (0.25-0.5 mm)

Note: See appendix 4G for details.

Photographs of the same grains in different positions