

**References and additional stratigraphic data**

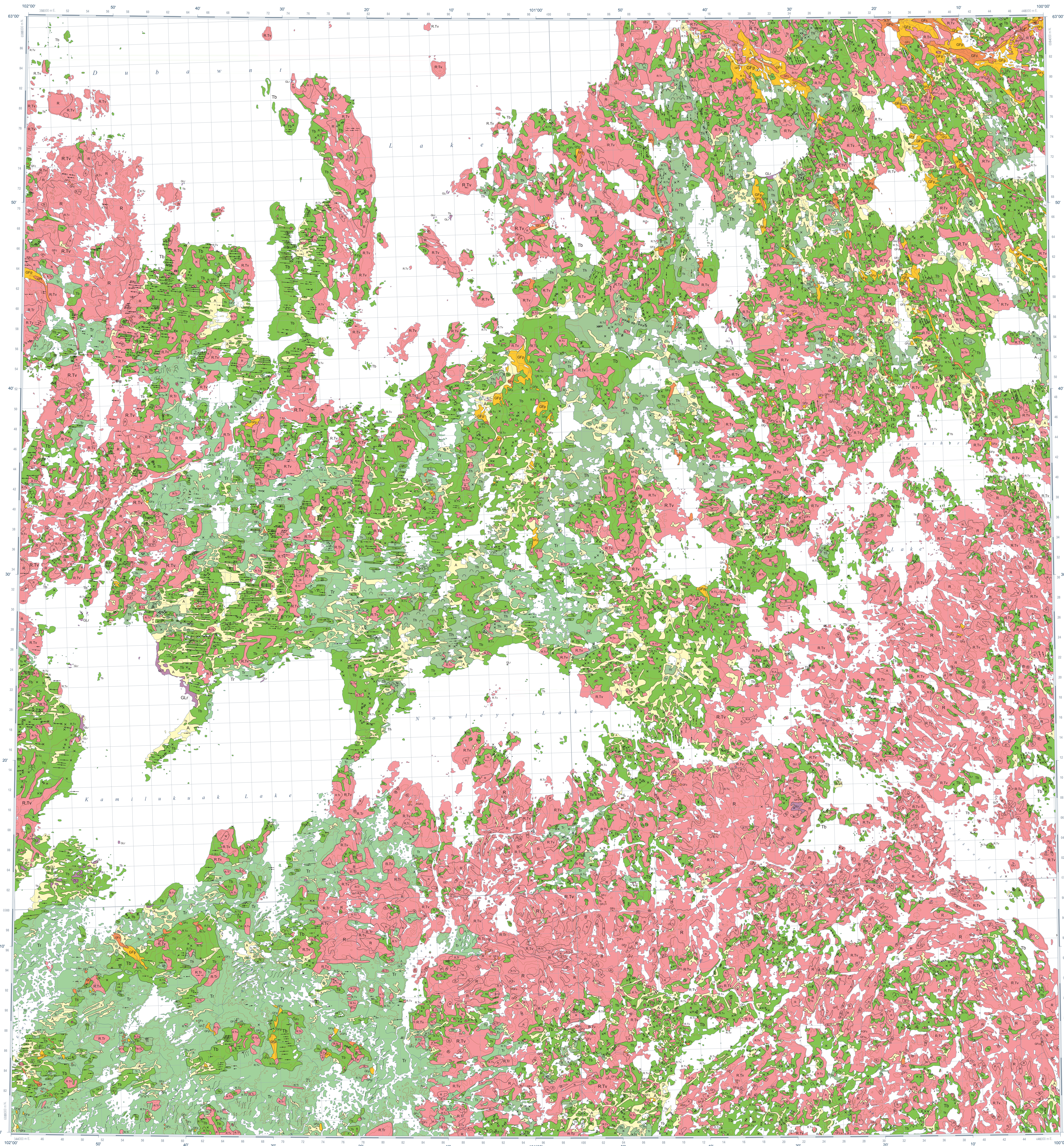
Cooking, R.B., DeBlonde, C., Kerr, D.E., Campbell, J.E., Eagles, S., Everett, D., Hurley, D.J., Inglis, E., Lavettro, A., Macdonald, M., Pfeiffer, A., Rober, D., and Smith, J. 1995. *Stratigraphic Data Bank*, version 2.0.0. Revisions to the science language of the Integrated Geological Survey of Canada data model for surficial geology maps. *Geological Survey of Canada, Open File* 8041, 451. doi:10.4095/258672

Aylward, J.M. 1985. *Surficial geology, Kamikooklaui Lake, District of Keewatin, Northwest Territories*. Geological Survey of Canada, Paper 85-1, 180. doi:10.4095/258672

Lee, H.A. 1959. *Surficial geology of southern district of Keewatin and the Keewatin Ice Divide, Northwest Territories*. Geological Survey of Canada, Bulletin 511, 42. doi:10.4095/100673

Wright, G.M. 1955. *Geological notes on central District of Keewatin, Northwest Territories*. Geological Survey of Canada, Paper 57-7, 21. doi:10.4095/101023

Wright, G.M. 1960. *Surficial geology, southwestern Barren Grounds, District of Keewatin and District of Mackenzie, Northwest Territories*. Geological Survey of Canada, Bulletin 571A, 35. doi:10.4095/108585

[illegible]

**PR QUANTARY**

**Bedrock**, undifferentiated. Precambrian intrusive gneiss and metagabbro; rock of igneous rocks, and unmetamorphosed sedimentary surface, comprises more than 90% outcrop; vegetation sparse, surface may be glacially covered and/or covered by boulders. Bedrock outcrops are identified with description of bedrock outcrop, and the outcrop is mapped as a composite polygon.

**Complex** units: two map-unit designations are used in cases where the surficial cover presents a complex and the map units are as small as to be mapped individually. They constitute a significant area in extent of the total polygon (e.g. R1 designates an area of bedrock with numerous small deposits of till, and R2 represents a till horizon). A note is used to separate the map-unit designations.

**Geological contact (defined)**

Major meander channel, directed south

Minor meadow ridge, unspecified

Buried drumlind ridge, to be obscured by siltification processes, water-laid sediments or snow covering

Drumlinset, filling

Crop-and flat

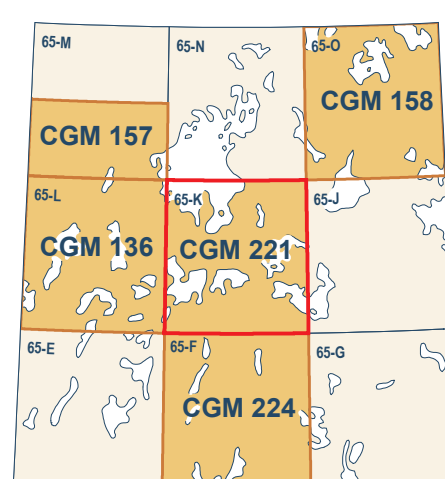
Hummock (hummocky moorine)

**Stratigraphic**

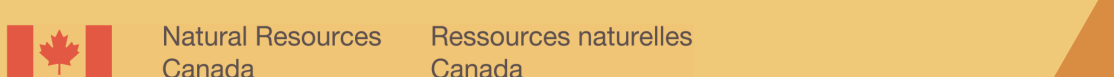
Crossed (if  $n \geq 2$ )

Discontinuity (if  $n = 2$ ;  $n = \text{youngest}$ )

Small bedrock outcrop

[illegible]

Catalogue No. M183-1/221-2015E-PDF  
ISBN 978-0-660-02565-0  
doi:10.4095/297331



CANADIAN GEOSCIENCE MAP 22  
RECONNAISSANCE SURFICIAL GEOLOGY  
KAMILUKUAK LAKE

Nunavut  
NTS 65-K  
1:125 000



Canada

## Preliminary

## Preliminary

CANADIAN GEOSCIENCE MAP 221

RECONNAISSANCE SURFICIAL GEOLOG  
KAMILUKUAK LAKE

Nunavut  
NTS 65-  
1, 125, 24



## Preliminary

## Preliminary

## Preliminary

Mean magnetic declination 2017, 4°41'E, decreasing 8.7' annually. Readings vary from 3°16'E in the NE corner to 6°00'E in the SW corner of the map.

This map is not to be used for navigational purposes.

The Geological Survey of Canada welcomes corrections or additional information from users.

Data may include additional observations not portrayed on this map. See map info document accompanying the downloaded data for more information about this publication.

Preliminary publications in this series have not been scientifically edited.

**CANADIAN GEOSCIENCE MAP 221**  
**RECONNAISSANCE SURFICIAL GEOLOGY**  
**KAMILUKUAK LAKE**  
 Nunavut  
 NTS 65-K

**Recommended citation**  
Geological Survey of Canada, 2017. Reconnaissance surficial geology, Kamikook Lake, Nunavut, NTS 85-K: Geological Survey of Canada, Canadian Geoscience Map 221 (preliminary Surficial Data Model v. 2.2 conversion of Map 4-1985), scale 1:125 000, doi:10.4095/297331