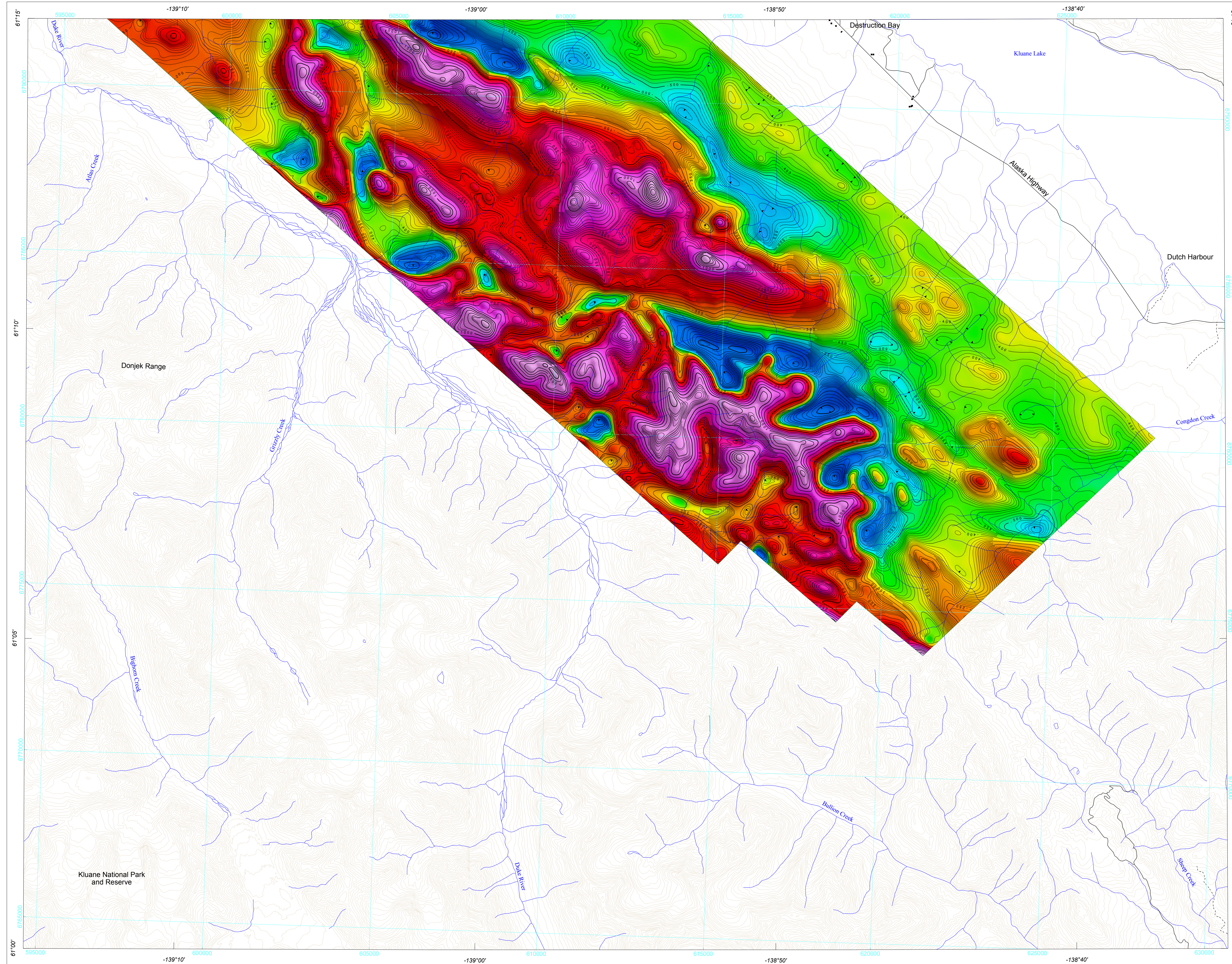
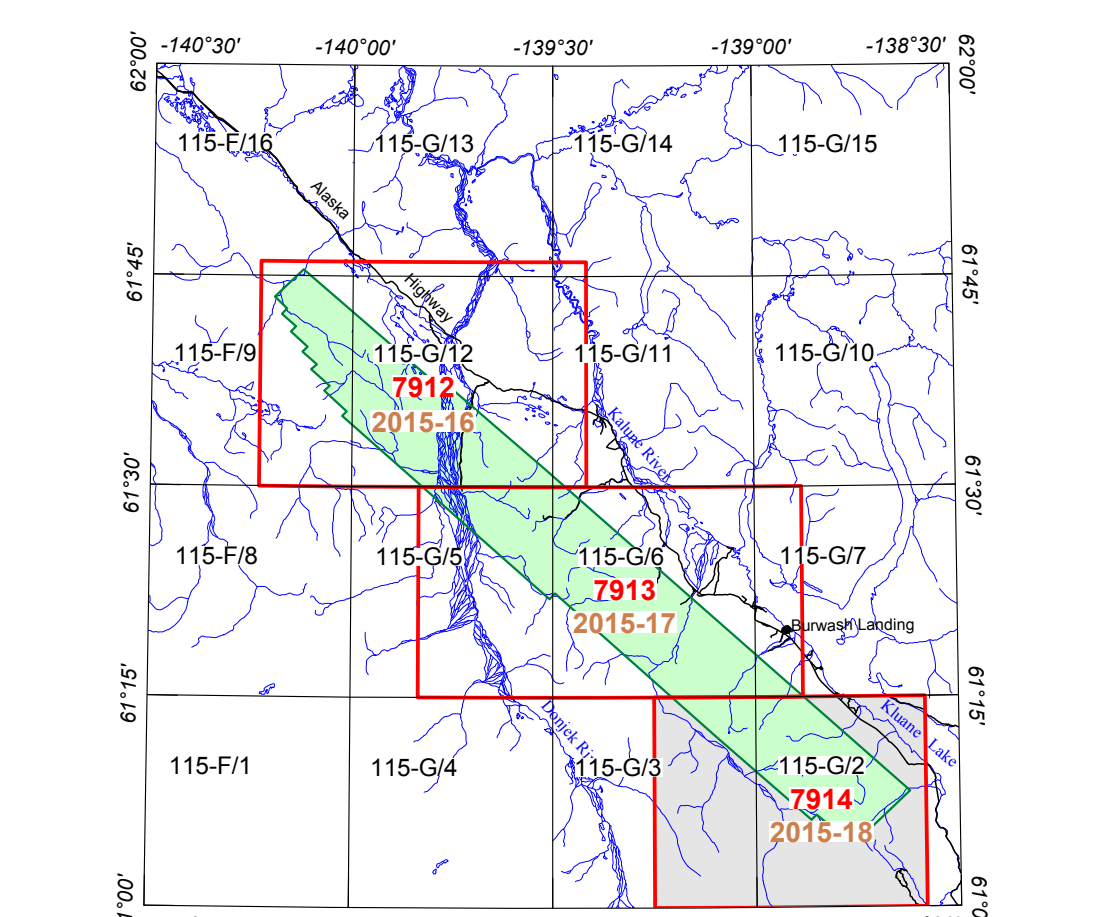
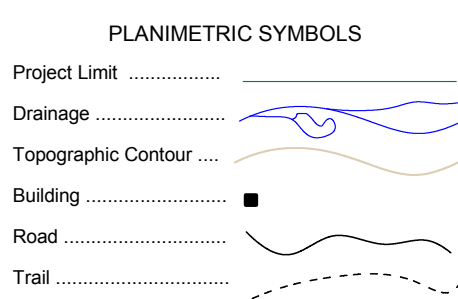
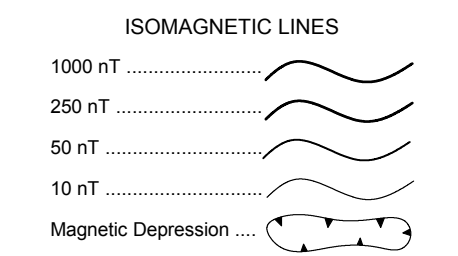
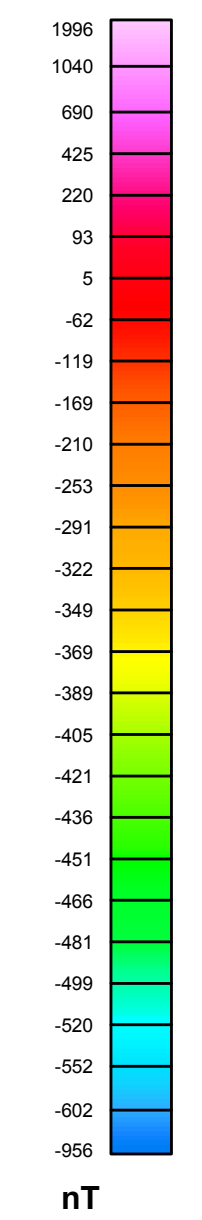


RESIDUAL TOTAL MAGNETIC FIELD



Residual Total Magnetic Field
 This map of the residual total magnetic field was derived from data acquired during an aeromagnetic survey carried out by CGO from March 6, 2015 to April 15, 2015. The data were recorded using a split-beam cesium vapour magnetometer (sensitivity = 0.005 nT) mounted in a stinger rig attached to an Aerospac AB300 helicopter (CFMXK). The nominal traverse and control line spacings were, respectively, 250 m and 1000 m, and the aircraft flew at a nominal terrain clearance of 100 m. Traverse lines were oriented NE-SW with orthogonal control lines. The flight path was recovered following post-flight differential corrections to the real-time Global Positioning System (GPS) data and inspection of ground images recorded by a vertically-mounted video camera. The survey was flown on a pre-determined flight surface to minimize differences in magnetic values at the intersections of control and traverse lines. These differences were computer-analysed to obtain a mutually levelled set of flight-line magnetic data. The levelled values were then interpolated to a 50 m grid. The International Geomagnetic Reference Field (IGRF) defined at the average GPS altitude of 950 m for the year 2015.23 was then removed. Removal of the IGRF, representing the magnetic field of Earth's core, produces a residual component related almost entirely to magnetizations within Earth's crust.



NATIONAL TOPOGRAPHIC REFERENCE SYSTEM AND GEOPHYSICAL MAP INDEX
 NTS Map Number
 GSC Open File Number
 YGS Open File Number

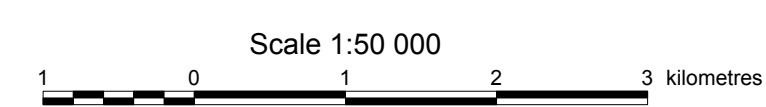
The Klwane Lake West aeromagnetic survey was jointly conceived and funded by the Yukon Geological Survey (YGS) and Klwane First Nation (KFN). YGS and KFN gratefully acknowledge the Strategic Initiatives in Northern Economic Development Program of Northern Economic Development Canada as the source of its funding contribution. Natural Resources Canada generously provided survey oversight and data processing and produced the maps as part of the Geo-mapping for Energy and Minerals (GEM) Program of the Earth Sciences Sector, Natural Resources Canada, efforts for which YGS and KFN are both sincerely appreciative.

Digital versions of this map are available for free download through GEOSCAN (<http://geoscan.nrcan.gc.ca/>). Corresponding digital profile and gridded data as well as similar data for adjacent airborne geophysical surveys can be downloaded, at no charge, from Natural Resources Canada's Geoscience Data Repository for Geophysical Data at http://gdp.gsc.nrcan.gc.ca/index_e.html. The same products are also available, for a fee, from the Geophysical Data Centre, Geological Survey of Canada, 615 Booth Street, Ottawa, Ontario K1A 0E9. Telephone: (613) 995-5326, email: gfdoc@gsa.nrcan.gc.ca

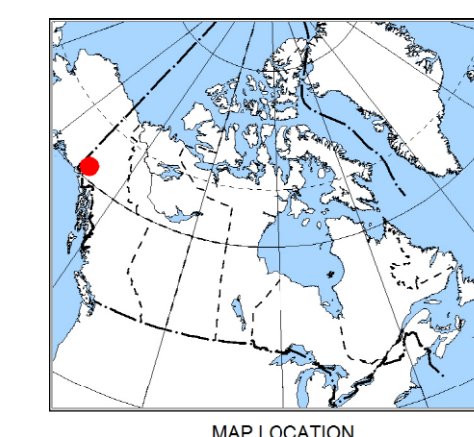
GSC OPEN FILE 7914
 YGS OPEN FILE 2015-18

RESIDUAL TOTAL MAGNETIC FIELD

KLWANE LAKE WEST AEROMAGNETIC SURVEY
 YUKON
 Parts of NTS 115-G/2 and 3



WGS 84 / UTM zone 7N
 World Geodetic System, 1984
 © Her Majesty the Queen in Right of Canada,
 as represented by the Minister of Natural Resources Canada, 2015
 Topographic Data from Natural Resources Canada



Authors: M. Coyle and D. Oneschuk
 Data acquisition and data completion by CGG, Mississauga, Ontario.
 Project management and map production by the Geological Survey of Canada, Ottawa, Ontario.
 001-10-4095236758

<p>OPEN FILE DOSSIER PUBLIC 7914 2015-18 2015</p>	<p>Publications in this series have not been edited; they are released as submitted by the author. Les publications de cette série ne sont pas révisées; elles sont publiées telles que soumises par l'auteur.</p>
---	---

Recommended citation
 Coyle, M. and Oneschuk, D., 2015. Residual Total Magnetic Field, Klwane Lake West Aeromagnetic Survey, Yukon, Parts of NTS 115-G/2 and 3. Geological Survey of Canada, Open File 7914; Yukon Geological Survey, Open File 2015-18; scale 1:50,000, 001-10-4095236758