



Natural Resources
Canada

Ressources naturelles
Canada

መዳኃኒቅ ስርዓት ስርዓት
ፊደል ስርዓት 215S
ስርዓት-መዳኃኒቅ ስርዓት ስርዓት
ፊደል ስርዓት 2015-02S

ፊደል ስርዓት

TERRA NIVEA

ፊደል ስርዓት



መዳኃኒቅ
ስርዓት ስርዓት
ስርዓት

ስርዓት ስርዓት

መዳኃኒቅ ስርዓት ስርዓት
ስርዓት ስርዓት ስርዓት ስርዓት

2015

Canada



በፈርሃውንት ምዕራብ
የፈርሃውንት ምዕራብ

KANATAMI-NUNAVUMI
GEOSCIENCE TITIGAKVIIT

This map synthesizes the field observations and initial interpretations for the Terra Nivea area following five weeks of regional and targeted bedrock mapping on the eastern Meta Incognita Peninsula, Baffin Island, Nunavut. Under the Geo-mapping for Energy and Minerals (GEM) Program, this area was targeted in 2014 to upgrade the geoscience knowledge and document the economic potential of the greater Iqaluit area south of Frobisher Bay. Field observations have constrained the distribution of

CLZDLC

Λ^cJ με α²JΔ^{5b}

[illegible]

[illegible]

ክልሉ የጥቅም ሆኖ ለሚገኙ ህዝቦች ለማድረግ ለሚችሉ ሁሉም ጥረትና ጥረት ይደረጋል።

[illegible]

◁^L b_aC▷^c - aa^g▷▷^b b^b b^b▷^a b^a▷^c (<http://cngo.ca/>)

መደራረቢያ ስም: **የጥበቃና የጥበቃ ስልጣን**

ለጋላ ወይም ሌላ ምንም ዓይነት ምርጫ ምክር ቤት አባል መሆን

ΔΛ^αα Δ^εbCİ^εΔJ μαΓ^b μα^αγΔCΔ^εbΓL^εε^b

[illegible]

[illegible]

[illegible]

ለዚህም ምሳሌ ለጥናታዊ ምርመራዎች ለሚያስፈልጉት የሚገቡ የሥራ ስልጣኖች ለሚሰጡት ሰራተኛዎች ማሳሰቢያ ማድረግ አለብን። ለምሳሌ፣ የሥራ ስልጣኖች ለሚሰጡት ሰራተኛዎች ማሳሰቢያ ማድረግ አለብን።

- [illegible]

ፖርላማንት ስልጣናዊ ኃይል (unit Pmdg)

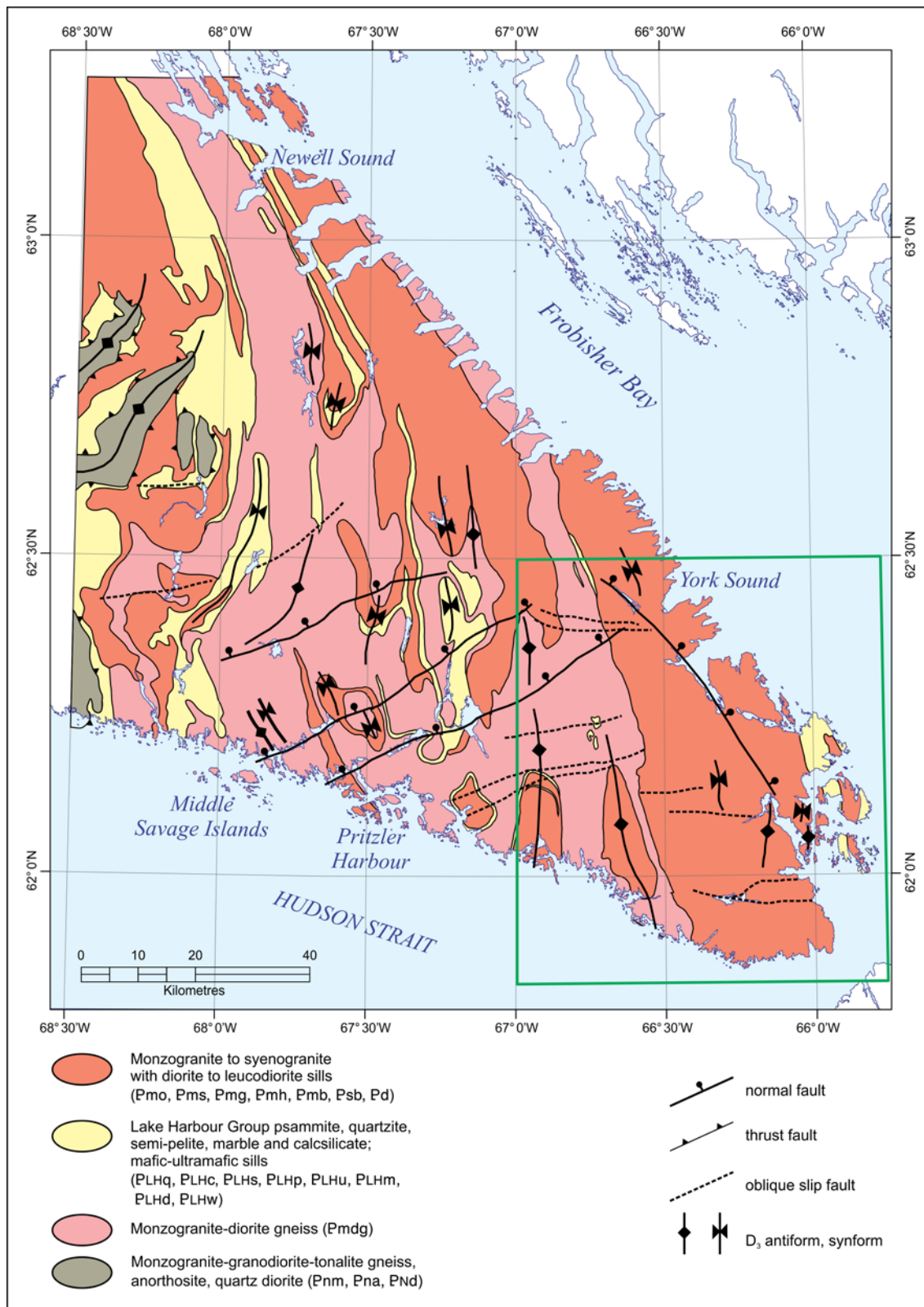
[illegible]

[illegible]

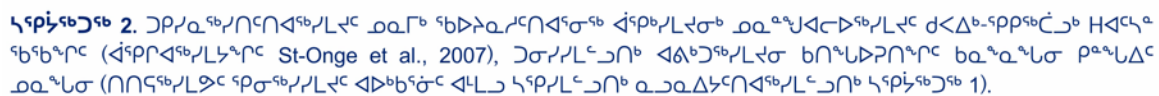
ጋፕሳፍ ስፔክትሮፕሮቶኮል ስራ ለሚደረግበት ጊዜ (units Pmo-Psb)

[illegible]

[illegible][illegible]



სურათი 1. უპრეპროცესირებული ბუნებრივი სკანირების მონაცემების საფუძველზე, 2014 წლის აგვისტო-სექტემბერში ჩატარებული აერომაგნიტური კვლევის შედეგად მიღებული გეოლოგიური რუკა. რუკაზე აღნიშნულია გეოლოგიური ერთეულები, სტრუქტურული დანაწევრება და ტოპოგრაფია. მონაცემები მომზადებულია 1965-1967 წლებში (Blackadar, 1967) და 1995-1997 წლებში (St-Onge et al., 1999a-g) მიღებული მონაცემების საფუძველზე. რუკა Terra Nivea პროგრამით შედგენილია.

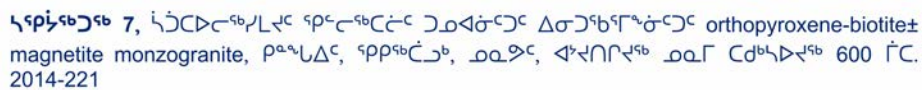




5. ႁႁႁႁႁႁႁႁ ႁႁႁ ႁႁႁႁႁႁႁႁ ႁႁႁႁႁႁႁ ႁႁႁႁႁႁႁ ႁႁႁႁႁႁႁ ႁႁႁႁႁႁႁ ႁႁႁႁႁႁႁ ႁႁႁႁႁႁႁႁ ႁႁႁႁႁႁႁႁ, ႁႁႁႁႁႁႁ, ႁႁႁႁႁႁႁ, ႁႁႁႁႁႁႁ. 2014-218



6. ႁႁႁႁႁႁႁႁႁႁ K-feldspar megacrystic monzogranite ႁႁႁႁႁႁႁ, ႁႁႁႁႁႁႁ, ႁႁႁႁႁႁႁ. 2014-222



Lucas, S.B. and St-Onge, M.R., 1992. Terrane accretion in the internal zone of the Ungava orogen, northern Quebec. Part 2: Structural and metamorphic history; Canadian Journal of Earth Sciences, v. 29, p. 765–782.

- Machado, G., Bilodeau, C., and St-Onge, M.R., 2013a. Geology, southern part of Hall Peninsula, south Baffin Island, Nunavut; Geological Survey of Canada, Canadian Geoscience Map 135 (preliminary); Canada-Nunavut Geoscience Office, Open File Map 2013-1, scale 1:250 000. doi:10.4095/292443
- Machado, G., Bilodeau, C., Takpani, R., St-Onge, M.R., Rayner, N.M., Skipton, D.R., From, R.E., MacKay, C.B., Creason, C.G., and Braden, Z.M., 2013b. Hall Peninsula regional bedrock mapping, Baffin Island, Nunavut: summary of field work; *in* Summary of Activities 2012, Canada-Nunavut Geoscience Office, p. 13–22.
- Scott, D.J., 1997. Geology, U-Pb, and Pb-Pb geochronology of the Lake Harbour area, southern Baffin Island: implications for the Paleoproterozoic tectonic evolution of north-eastern Laurentia; *Canadian Journal of Earth Sciences*, v. 34, p. 140–155.
- Scott, D.J., 1999. U-Pb geochronology of the eastern Hall Peninsula, southern Baffin Island, Canada: A northern link between the Archean of West Greenland and the Paleoproterozoic Torngat orogen of northern Labrador; *Precambrian Research*, v. 93, p. 5–26.
- Scott, D.J. and Wodicka, N., 1998. A second report on the U-Pb geochronology of southern Baffin Island, Northwest Territories; *in* Radiogenic Age and Isotopic Studies: Report 11; Geological Survey of Canada, Current Research, 1998-F, p. 47–57. doi:10.4095/210055
- Scott, D.J., St-Onge, M.R., Wodicka, N., and Hanmer, S., 1997. Geology of the Markham Bay – Crooks Inlet area, southern Baffin Island, Northwest Territories; *in* Current Research 1997-C; Geological Survey of Canada, p. 157–166. doi:10.4095/208641
- Steenkamp, H.M. and St-Onge, M.R., 2014. Overview of the 2013 regional bedrock mapping program on northern Hall Peninsula, Baffin Island, Nunavut; *in* Summary of Activities 2013, Canada-Nunavut Geoscience Office, p. 27–38.
- St-Onge, M.R., Hanmer, S., and Scott, D.J., 1996. Geology of the Meta Incognita Peninsula, south Baffin Island, Northwest Territories: tectonostratigraphic units and regional correlations; *in* Current Research 1996-C; Geological Survey of Canada, p. 63–72. doi:10.4095/207444
- St-Onge, M.R., Scott, D.J., and Lucas, S.B., 2000. Early partitioning of Quebec: Microcontinent formation in the Paleoproterozoic; *Geology*, v. 28, p. 323–326.
- St-Onge, M.R., Scott, D.J., Wodicka, N., and Lucas, S.B., 1998. Geology of the McKellar Bay – Wight Inlet – Frobisher Bay area, southern Baffin Island, Northwest Territories; *in* Current Research 1998-C; Geological Survey of Canada, p. 43–53. doi:10.4095/209512
- St-Onge, M.R., Scott, D.J., and Wodicka, N., 1999a. Geology, Frobisher Bay, Nunavut; Geological Survey of Canada, Map 1979A, scale 1:100 000. doi:10.4095/210833
- St-Onge, M.R., Scott, D.J., and Wodicka, N., 1999b. Geology, Hidden Bay, Nunavut; Geological Survey of Canada, Map 1980A, scale 1:100 000. doi:10.4095/210835
- St-Onge, M.R., Scott, D.J., and Wodicka, N., 1999c. Geology, McKellar Bay, Nunavut; Geological Survey of Canada, Map 1981A, scale 1:100 000. doi:10.4095/210836
- St-Onge, M.R., Scott, D.J., and Wodicka, N., 1999d. Geology, Wight Inlet, Nunavut; Geological Survey of Canada, Map 1982A, scale 1:100 000. doi:10.4095/210840

Marc.St-Onge@NRCan-RNCan.gc.ca

ԵԼՂԻՐ ԼՇՆՆԵՐ

[illegible]
$$\triangleleft^{\mathfrak{a}} \Gamma \triangleleft^{\mathfrak{c}} \sigma^{\mathfrak{a}} \Gamma^{\mathfrak{c}}: \Gamma^{\mathfrak{c}}$$

$\Delta^{\epsilon_b} \mathbb{C} \triangleright L^{\epsilon_b}$ $\text{mod } 19$

ከሚገኙ ዓባይ ልዩነቶች: NAD83

၎င်းတို့သည် နယ်လွှာများကို ဖြတ်၍ အောက်သို့ ရောက်ရှိလာပြီးနောက် နယ်လွှာများကို ဖြတ်၍ အောက်သို့ ရောက်ရှိလာပြီးနောက်

ፊርማና ስም

Λαμ.α.λ.σ. ρδ.Γ: 67°00'00" Λαμ.α.λ.

ბეზელის რძე: 65°46'00" ობს.

▷◁^{ᠠᠷᠠᠨ}ᠠᠨᠢᠯᠠᠭ ᠤᠰᠤᠨ: 62°30'00" ▷◁^{ᠠᠷᠠᠨ}ᠠᠨᠢᠯᠠᠭ

σ_Π Δ λσ_Π: 61°50'00" ▷ Δ^a Δ^a Δ

ፍጥረትና ልማት ሚኒስቴር ይገኛል

Geological Dataset accompanying this publication complies with the GSC's Project Bedrock Schema (beta version 2.2). A short text describing the feature classes, tables and attributes is currently under review and will be made available for download shortly.

All attribute names and definitions are identical in the geodatabase (.gdb file), the shapefiles and the XML workspace file.

LICENCE AGREEMENT

View the licence agreement at <http://data.gc.ca/eng/open-government-licence-canada>

ACCORD DE LICENCE

Voir l'accord de licence à <http://donnees.gc.ca/fra/licence-du-gouvernement-ouvert-canada>

ᑕᐃᑦᑦ ᐃᐅᐃᑦᑕᐃᑦᑕ ᑦᑕᑦᑕᑕᑕᑕᑕ ᐃᑦᑕᑕᑕᑕᑕ ᐃᐃᑕᑕᑕᑕ.