

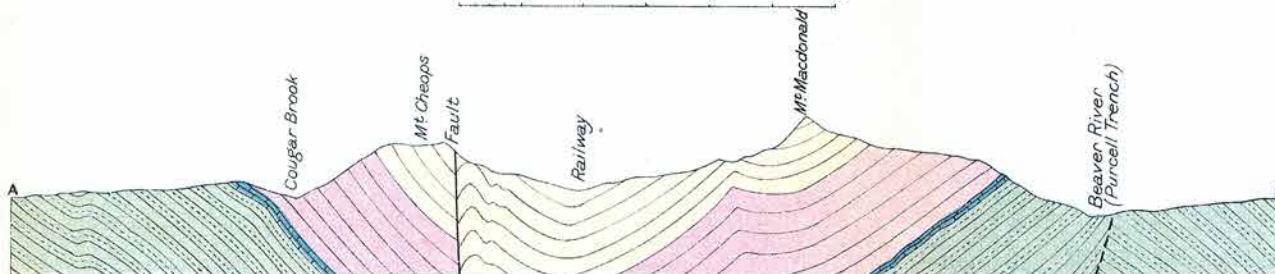
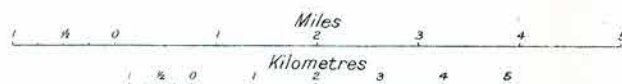
Legend

- Glacier and snow-field
- Sd Sir Donald quartzite
- R Ross quartzite
- Nakimu limestone
- Nakimu limestone (mapped approximately)
- C Cougar formation (quartzite, metargillite)
- Am Phyllitic metargillite (Youngest member of Albert Canyon division of Selkirk series)

Note--Faults not shown on the map

Geological Survey, Canada.

Glacier



Section along line AB

This document was produced by scanning the original publication.

Ce document est le produit d'une numérisation par balayage de la publication originale.