

Table listing oil and gas fields across provinces: ALBERTA, BRITISH COLUMBIA, MANITOBA, ONTARIO, QUEBEC, SASKATCHEWAN, and NEWFOUNDLAND AND LABRADOR.

Table listing mines across provinces: ALBERTA, BRITISH COLUMBIA, MANITOBA, ONTARIO, QUEBEC, SASKATCHEWAN, and NEWFOUNDLAND AND LABRADOR.

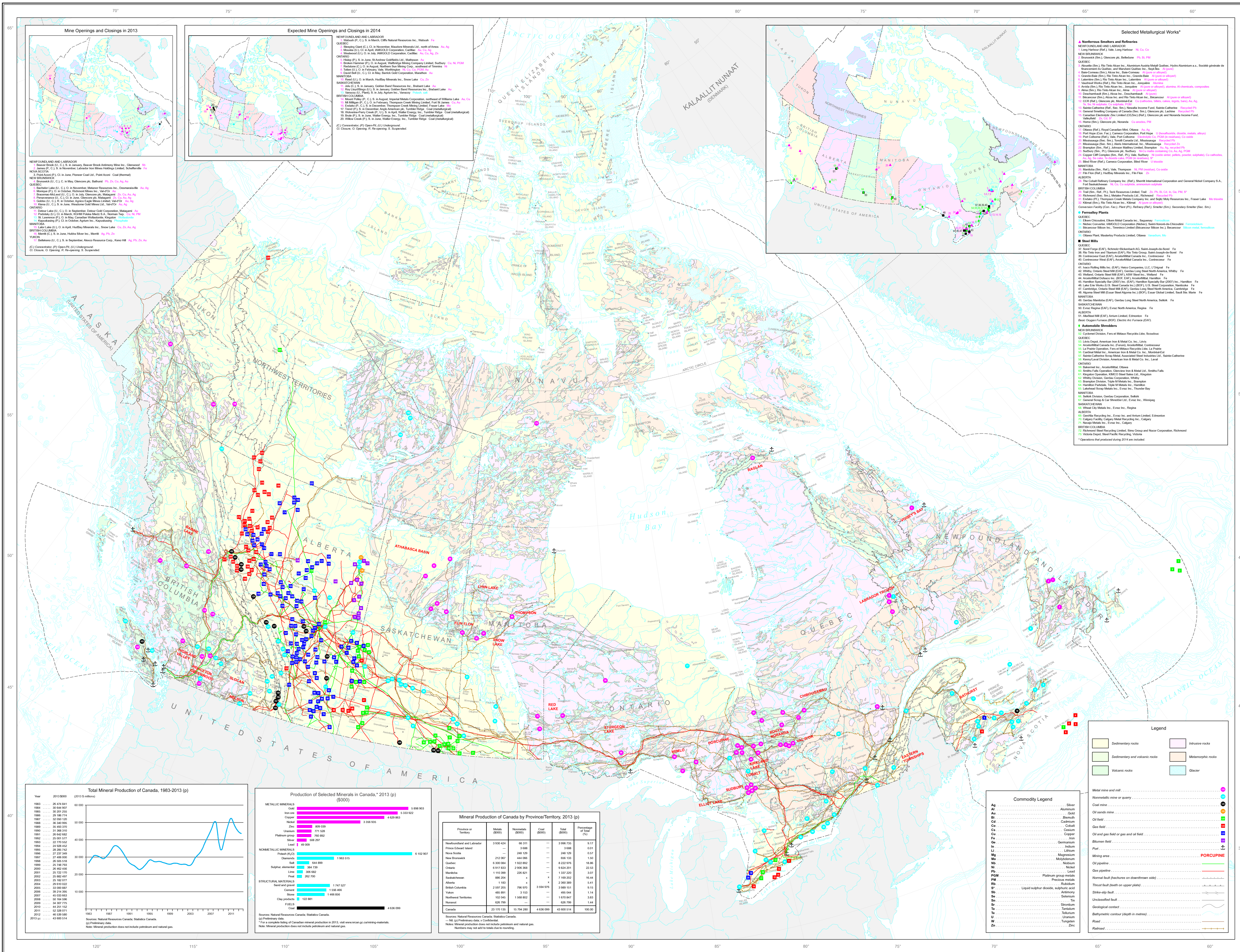


Table listing oil and gas fields across provinces: BRITISH COLUMBIA, ALBERTA, SASKATCHEWAN, MANITOBA, ONTARIO, QUEBEC, and NEWFOUNDLAND AND LABRADOR.

Map production coordinated by P. Plante of the Statistics and Economic Analysis Division, Mines and Atlantic Sector. Geological by the Geological Survey of Canada, NRCAN. Cartography by G. Ewert, Earth Sciences Sector, NRCAN.

MINERALS AND METALS SECTOR AND NATIONAL ENERGY BOARD. PRINCIPAL MINERAL AREAS OF CANADA. SECTEUR DES MINÉRAUX ET DES MÉTAUX ET LE CTIONATION DE L'ÉNERGIE. PRINCIPALES RÉGIONS MINIÈRES DU CANADA. Includes a scale bar and production data for 2013.

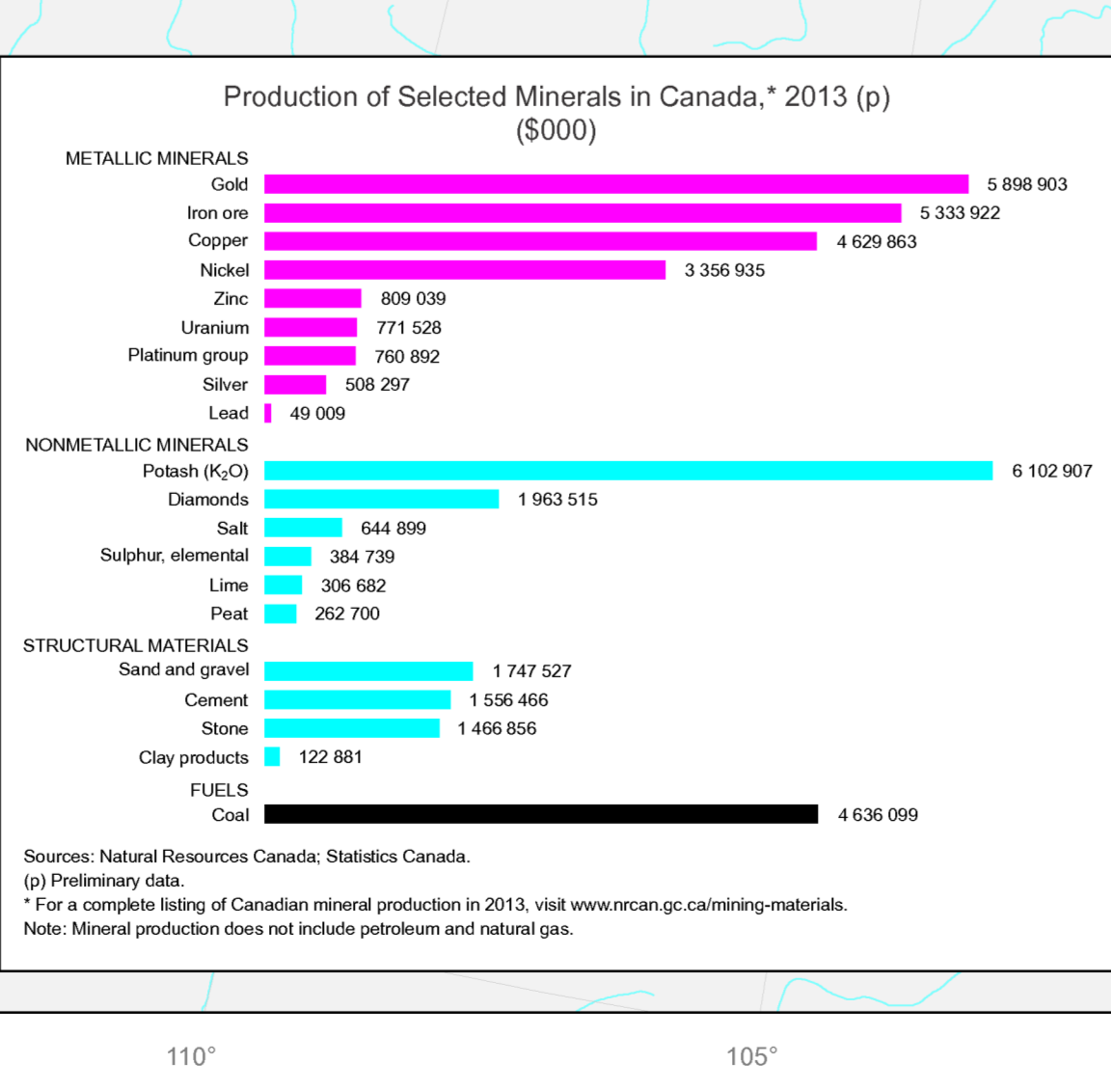
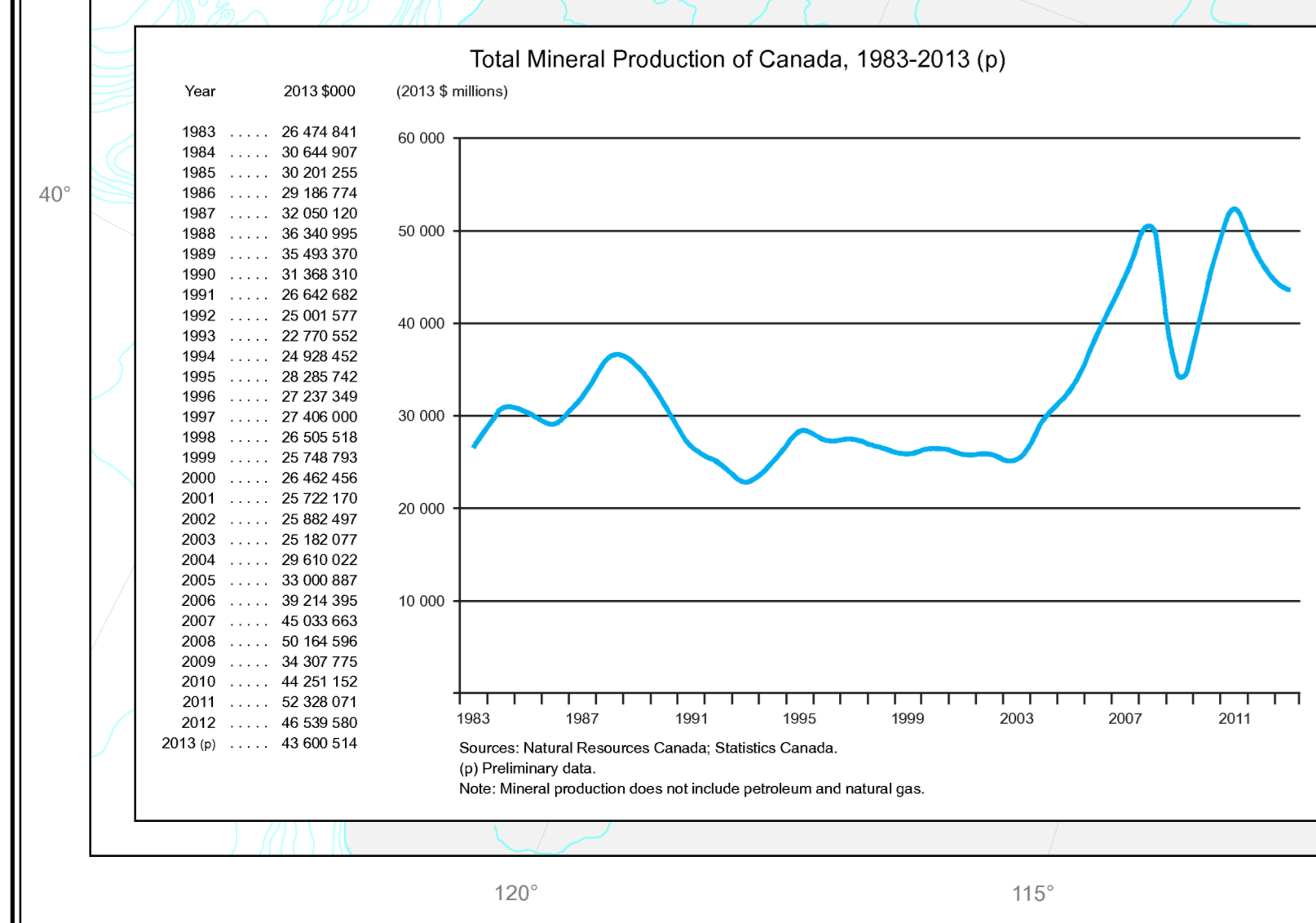


Table titled 'Mineral Production of Canada by Province/Territory, 2013 (p)'. Columns include Province/Territory, Minerals, and Production values.

Legend and Commodity Legend. Legend defines symbols for sedimentary rocks, igneous rocks, metamorphic rocks, and other geological features. Commodity Legend lists minerals like Silver, Aluminum, Barium, and others with their corresponding symbols.