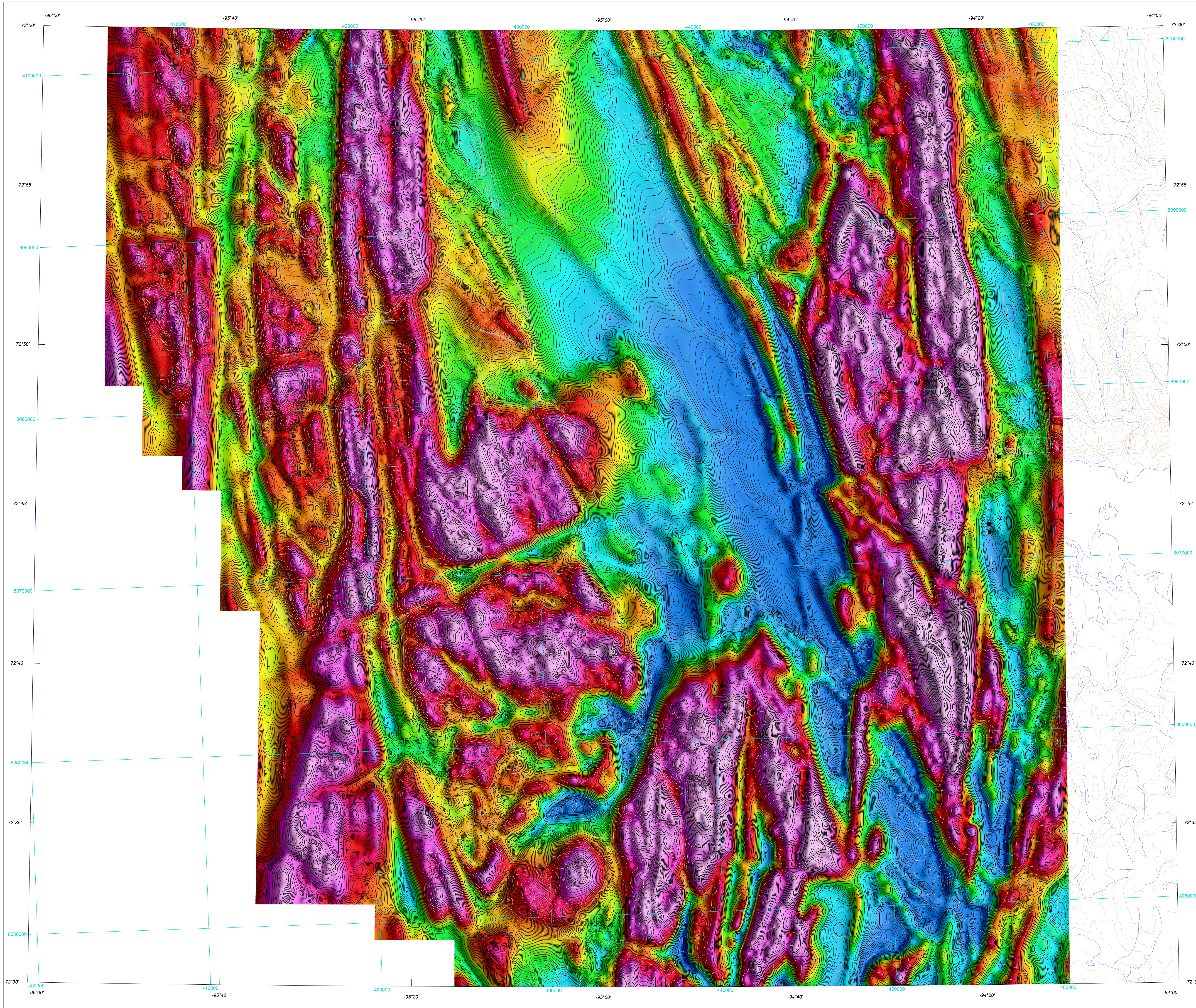
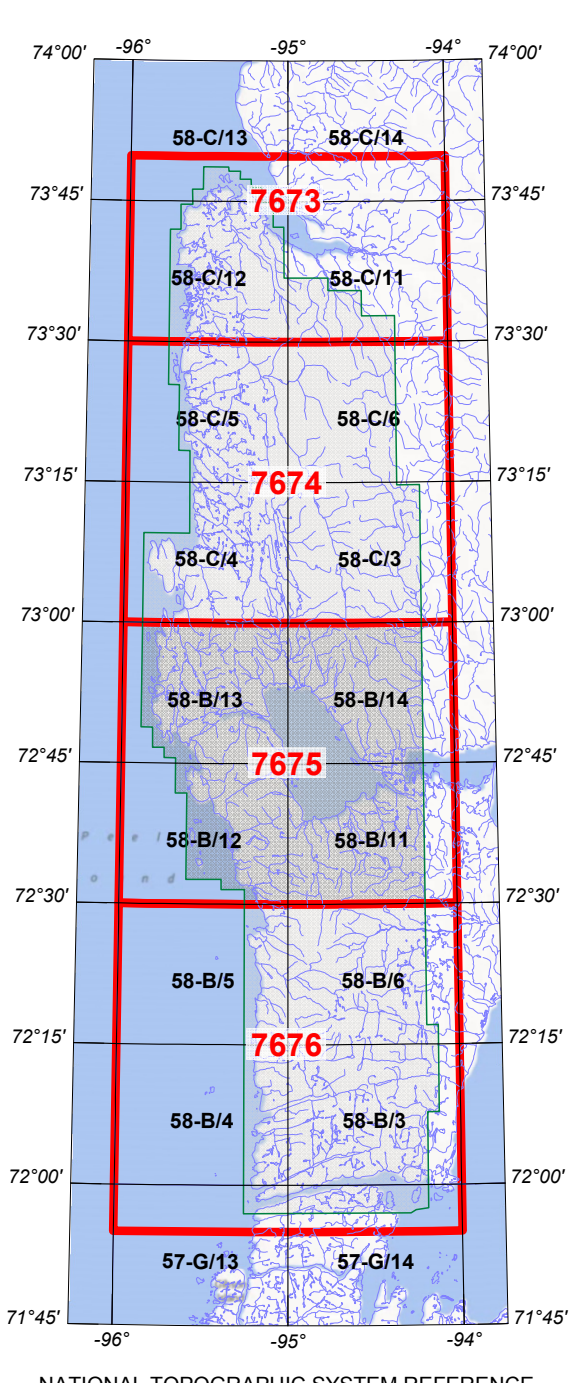
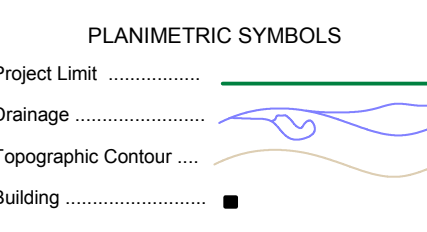
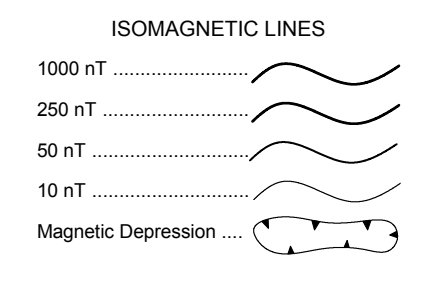
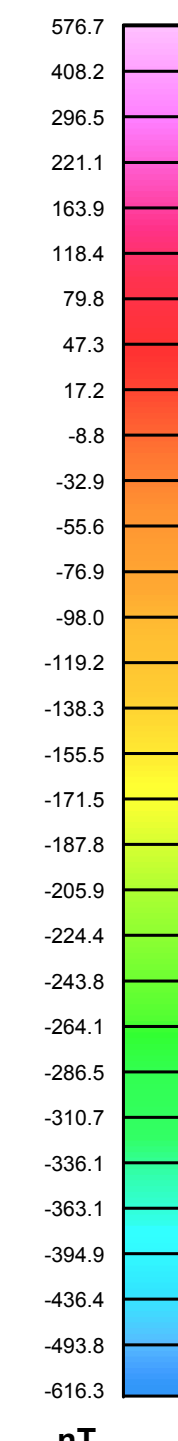




RESIDUAL TOTAL MAGNETIC FIELD



Residual Total Magnetic Field
 This map of the residual total magnetic field was derived from data acquired during an aeromagnetic survey carried out by EON Geosciences Inc. from May 30 to July 8, 2014. The data were recorded using split-beam cesium vapour magnetometers (sensitivity = 0.005 nT) mounted in each of the tail booms of a Piper Cheyenne II aircraft (C-42) and a Cessna 208 aircraft (C-172N). The nominal traverse line spacing was 400 m and 500 m. The nominal control line spacing was 2400 m. The aircraft flew at a nominal terrain clearance of 150 m. Traverse lines were oriented E-W with orthogonal control lines. The flight path was recovered following post-flight differential corrections to the raw Global Navigation Satellite System (GNSS) data and inspection of ground images recorded by a vertically-mounted video camera. The survey was flown on a pre-determined flight surface to minimize differences in magnetic values at the intersections of control and traverse lines. These differences were computer-analysed to obtain a mutually levelled set of flight-line magnetic data. The levelled values were then interpolated to a 100 m grid. The International Geomagnetic Reference Field (IGRF) defined at the average GPS altitude of 309.68 m for the year 2014.465 was then removed. Removal of the IGRF, representing the magnetic field of the Earth's core, produces a residual component related almost entirely to magnetizations within the Earth's crust.
 A digital version of this map can be downloaded, at no charge, from Natural Resources Canada's GeoGratis portal at <http://www.geoGratis.gc.ca>. Corresponding digital profile and gridded data as well as similar data for adjacent airborne geophysical surveys are available from Natural Resources Canada's Geoscience Data Repository for Aeromagnetic data at <http://www.gdr.nrcan.gc.ca/geo/geo.asp>. The same products are also available, for a fee, from the Geophysical Data Centre, Geological Survey of Canada, 615 Booth Street, Ottawa, Ontario K1A 0E9. Telephone: (613) 995-5326, email: mgp@gsd.nrcan.gc.ca.



This aeromagnetic survey and the production of this map were funded by phase 2 of the Geo-Mapping for Energy and Minerals program (GEM-2) of the Earth Sciences Sector, Natural Resources Canada.

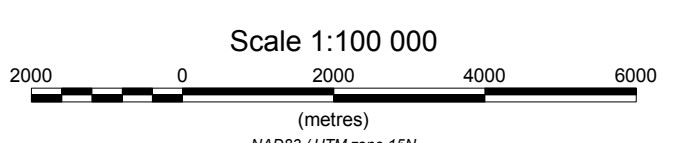
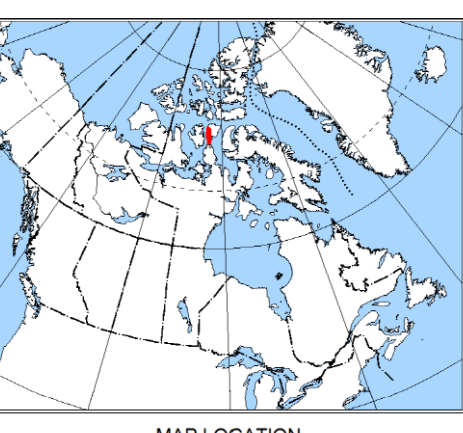
GEOLOGICAL SURVEY OF CANADA OPEN FILE 7675

RESIDUAL TOTAL MAGNETIC FIELD

AEROMAGNETIC SURVEY OF SOMERSET ISLAND AREA

Parts of NTS 58-B/11, 12, 13 and 14
 NUNAVUT

Authors: M. Coyle and D. Oneschuk
 Data acquisition and data compilation by
 EON Geosciences Inc., Montreal, Quebec.
 Contract and project management and map production
 by the Geological Survey of Canada, Ottawa, Ontario.



Scale 1:100 000
 (metres)
 NAD83 / UTM zone 19U
 Universal Transverse Mercator Projection
 North American Datum 1983
 © Her Majesty the Queen in Right of Canada, as represented by the Minister of Natural Resources Canada, 2015
 Digital topographic data from Natural Resources Canada

AEROMAGNETIC SURVEY OF SOMERSET ISLAND AREA

OPEN FILE
 DOSSIER PUBLIC
7675
 GEOLOGICAL SURVEY OF CANADA
 COMMISSION GÉOLOGIQUE DU CANADA
 2015

Recommended citation:
 Coyle, M. and Oneschuk, D., 2015.
 Residual total magnetic field,
 Aeromagnetic survey of Somerset Island Area,
 Parts of NTS 58-B/11, 12, 13 and 14, Nunavut,
 Geological Survey of Canada, Open File 7675,
 Scale 1:100 000.