



Natural Resources  
Canada

Ressources naturelles  
Canada



EARTH SCIENCE SECTOR  
GENERAL INFORMATION PRODUCT 108e

**Geo-mapping for Energy and Minerals  
(GEM-2) Call for Grant Proposals**

Geological Survey of Canada

2014

©Her Majesty the Queen in Right of Canada 2014

Canada 

## Call for Grant Proposals: Geo-mapping for Energy and Minerals Program, Phase 2 (GEM-2)

The GEM-2 program has an available budget to fund grant agreements with Canadian academic collaborators to complement existing GEM research. Over the next six years, the program is looking to support innovative proposals to help develop long-term Canadian geoscience capacity and to address pressing resource industry needs in the North.

**The program is currently seeking proposals of less than \$50K for projects to be completed by March 31, 2015.**

The GEM-2 Proposal Template is available online at the [GEM Publications RSS Feed](#)  
**Proposals must be received by September 22, 2014 to [GEM@NRCan-RNCan.gc.ca](mailto:GEM@NRCan-RNCan.gc.ca)**  
Only the proposals using the appropriate template will be considered in the evaluation.

For more information:  
Louise Laverdure, Director; [GEM@NRCan-RNCan.gc.ca](mailto:GEM@NRCan-RNCan.gc.ca);  
601 Booth Street, Room 220, Ottawa ON, K1A 0E8

Please circulate this call for proposals to any additional parties who may be interested.

### Program Objectives

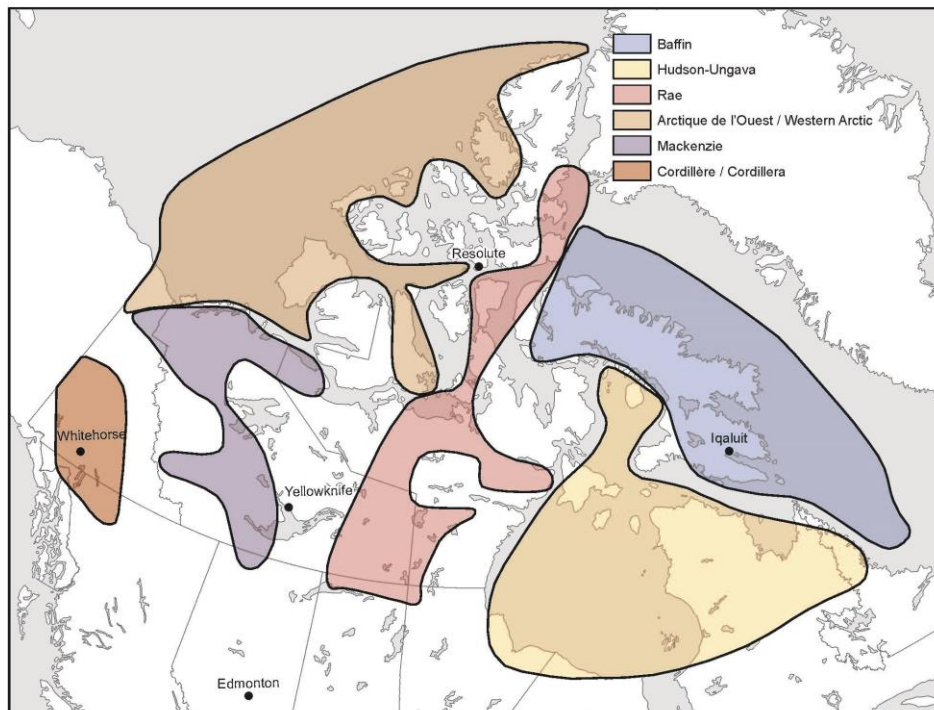
- The Geo-Mapping for Energy and Minerals (GEM) program is a 12 year initiative to significantly advance and modernize geological knowledge in the North
- Phase 2 of the GEM Program was announced by Prime Minister Harper on August 22, 2013, with renewed funding of \$100M over seven years to complete modern regional scale geological maps and data sets for Canada's North
- GEM-2 will continue to provide geoscience knowledge that has been instrumental to making informed resource investment and land-use decisions in the North
- To reduce knowledge gaps in geosciences in northern Canada, the GEM Program will develop strategic collaborations with the Canadian academic community to help develop long-term Canadian capacity and complement existing GEM research
- Research conducted must focus on priority research areas for GEM-2 and contribute to framework geological mapping in the North (see Priority GEM-2 Research below)

### Criteria

- Proposed research must contribute to long-term Canadian research capacity, demonstrating innovation in the development of ideas and methods that are applicable to industry needs
- Established high-performance and high-capacity Canadian research groups (established Chairs, Consortiums, etc.) will be prioritized
- Proponents that leverage resources from other partners/collaborators (e.g., industry/university cash/in-kind support, complementary NSERC grants/stipends, etc.) will be prioritized
- Selection will be based on scientific merit and capacity to deliver the proposed work

### Priority GEM-2 Research

- Six regions of interest have been identified in northern Canada based on geoscience knowledge gaps and the underlying regional geological structure (see Figure 1)
- Proposed research **must** advance modern geological understanding in at least one region of interest, by contributing to the following priority themes:
  1. Metallogeny of northern Canada
  2. Glacial history and drift prospecting of northern Canada
  3. Evolution of Canada's northern sedimentary basins
  4. Thermochronology and low temperature thermal history of northern Canada
  5. Tectonothermal evolution of northern Canada
  6. Characterization of seabed features in Canada's northern petroleum basins
  7. Crustal architecture of northern Canada
- Scientific questions which are being pursued by GEM research staff can be provided if requested



**Figure 1:** GEM-2 Regions of Interest



<b>Budget:</b> Using the table below, provide a detailed accounting as to how FY 2014-15 Grant funding is expected to be utilized	
<b>Budget Item</b>	<b>Anticipated Expenditure</b>
<b>Salaries &amp; Benefits</b>	
Students (B.Sc., M.Sc., Ph.D) [please provide name(s) below]	
Postdoctoral fellows (PDFs) [please provide name(s) below]	
<b>Field-related Costs</b>	
Field travel expenses	
Accommodation	
Food & Beverages	
Fuel	
Field Equipment	
<b>Field Rental/Leases</b>	
Machinery, Field equipment	
Motor Vehicles (i.e. automobiles, Trucks, ATVs, etc.)	
Aircraft, ships & boats	
Informatics equipment	
Miscellaneous goods and products	
<b>Non Field-related Costs</b>	
Professional & Special Services	
Scientific and Research Services (e.g., Specialized technical advisory/consulting services, etc.)	
Laboratory Services (e.g., analytical geochemistry, isotope analyses, geochronology, etc.)	
Informatics Services (e.g., 3-D modeling services, seismic processing, etc.)	
Non-Field related Domestic and International Travel/Meeting expenses	
Computer equipment/software	
Telecommunications equipment	
Communications Material - costs related to publishing, printing services, exposition and related services	
Facilities Rentals	
Postage, freight, express & cartage	
Other Costs (please specify)	
<b>Administrative/Business Service Costs</b>	
Specialized Business Services (Accounting & Audit, Administrative, Legal, Engineering and Architectural, Health and Welfare; Protection; Informatics, Translation, etc.) [Please specify type of service below]	
<b>Other Miscellaneous Expenditures [please specify below] Limit: 100 characters</b>	
<b>TOTALS</b>	

<b>Anticipated Project Outcomes/Results</b> (provide specific deliverables, including dissemination plan) <b>Limit: 600 characters</b>

**Benefits of Funding Project**

To Canada: **Limit: 500 characters**

To Industry: **Limit: 400 characters**

To the Proponent: **Limit: 400 characters**

**RESEARCH TEAM** (Provide evidence that the project team has the necessary capabilities, experience and qualifications to deliver the project)  
**Limit: 500 characters**

**LEVERAGE** (Provide an estimate of the resources that will be contributed by the Proponent organization and other partners/ collaborators (e.g., industry/University cash/in-kind support, complementary NSERC grants/stipends, etc.)) **Limit: 500 characters**

**OTHER COMMENTS**

(For example, has ESS/GSC previously provided Grant/Contribution funding; is the initiative supported by other stakeholders/ partners). **Limit: 500 characters**

**PROPONENT CONTACT INFORMATION**  
(Name, title and affiliation of Project Authority)

**Proposal submission Date:**

