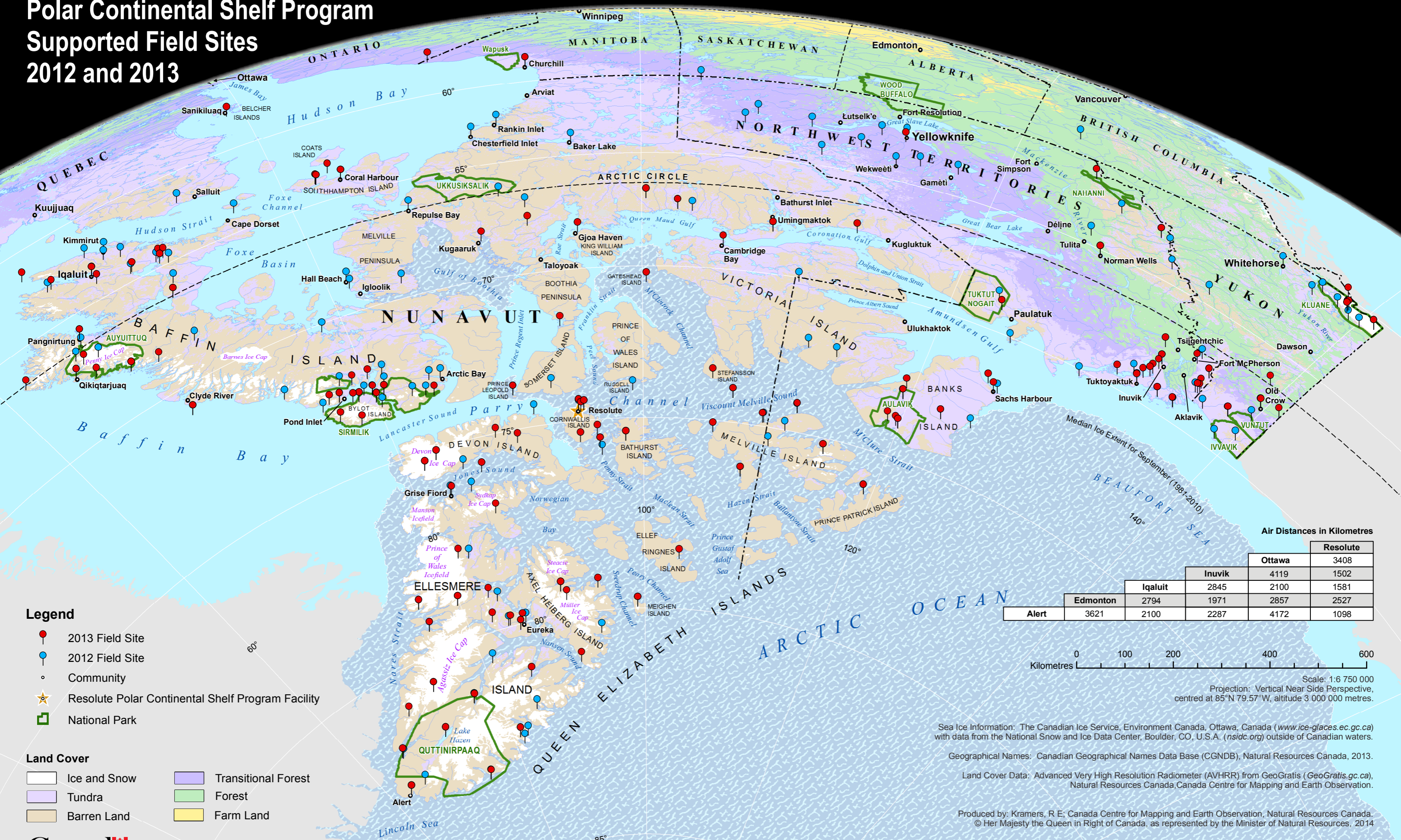


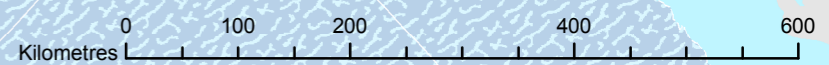
# Polar Continental Shelf Program Supported Field Sites 2012 and 2013



- Legend**
- 2013 Field Site
  - 2012 Field Site
  - Community
  - ★ Resolute Polar Continental Shelf Program Facility
  - ▭ National Park
- Land Cover**
- Ice and Snow
  - Transitional Forest
  - Tundra
  - Forest
  - Barren Land
  - Farm Land

**Air Distances in Kilometres**

	Edmonton	Inuvik	Iqaluit	Ottawa	Resolute
Alert	3621	2100	2287	4172	1098



Scale: 1:6 750 000  
Projection: Vertical Near Side Perspective, centred at 85°N 79.57°W, altitude 3 000 000 metres.

Sea Ice Information: The Canadian Ice Service, Environment Canada, Ottawa, Canada ([www.ice-glaces.ec.gc.ca](http://www.ice-glaces.ec.gc.ca)) with data from the National Snow and Ice Data Center, Boulder, CO, U.S.A. ([nsidc.org](http://nsidc.org)) outside of Canadian waters.

Geographical Names: Canadian Geographical Names Data Base (CGNDB), Natural Resources Canada, 2013.

Land Cover Data: Advanced Very High Resolution Radiometer (AVHRR) from GeoGratis ([GeoGratis.gc.ca](http://GeoGratis.gc.ca)), Natural Resources Canada, Canada Centre for Mapping and Earth Observation.

Produced by: Kramers, R E; Canada Centre for Mapping and Earth Observation, Natural Resources Canada. © Her Majesty the Queen in Right of Canada, as represented by the Minister of Natural Resources, 2014

