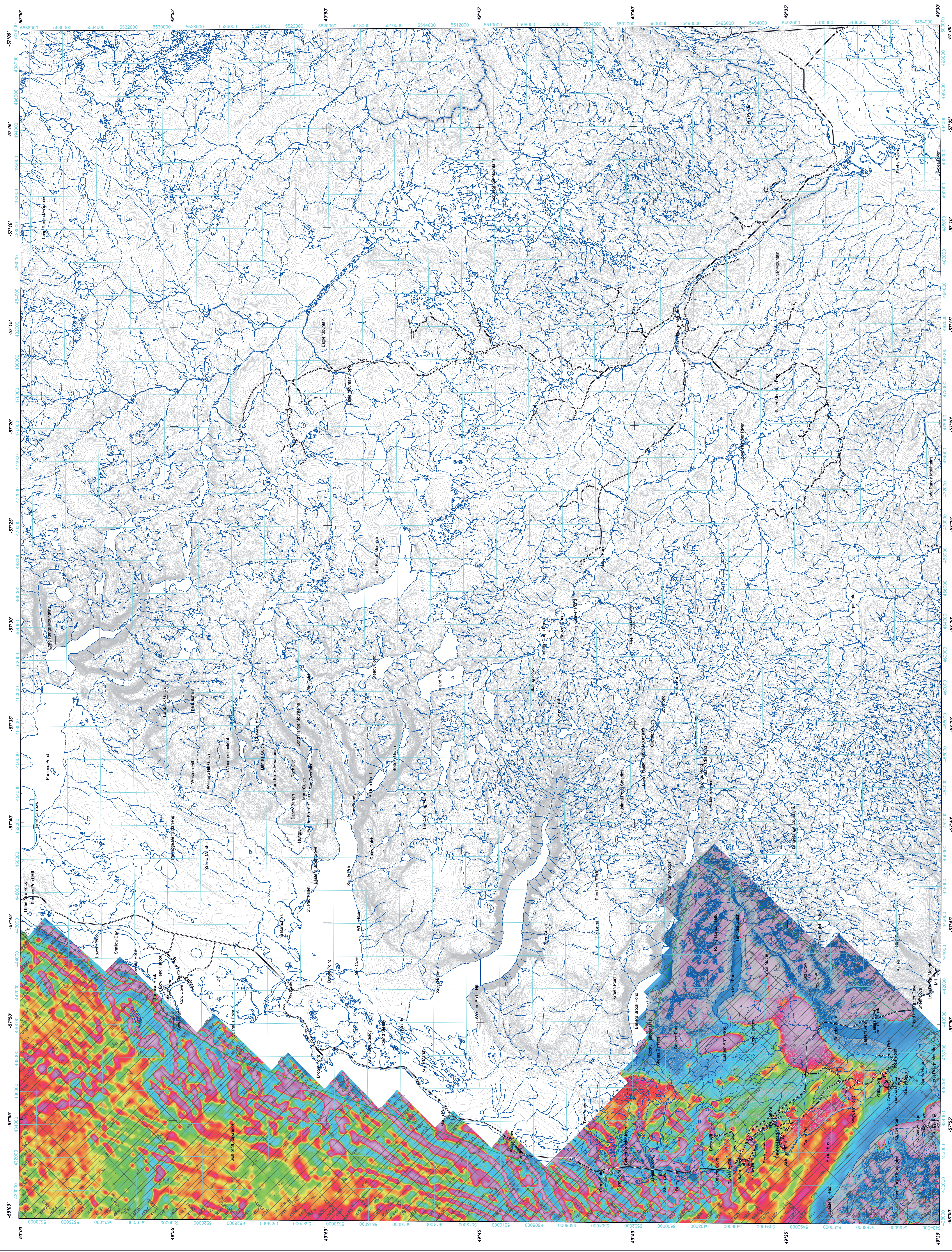


SECOND VERTICAL DERIVATIVE OF THE MAGNETIC FIELD

DERIVÉE SECONDE VERTICALE DU CHAMP MAGNÉTIQUE



TOPOGRAPHIC CONTOUR INTERVAL: 30 METRES

The topographic data and the production of this map were funded by the Newfoundland and Labrador Department of Natural Resources, Energy Branch, through the Offshore Geoscience Data Acquisition Program (OGDAP). The map was produced by the Geological Survey of Canada (GSC) and the Newfoundland and Labrador Department of Natural Resources, Energy Branch. The map was produced by the Geological Survey of Canada (GSC) and the Newfoundland and Labrador Department of Natural Resources, Energy Branch.

Authors: Dumont, R. and Jones, A.

Data acquisition and compilation by Geological Surveys, Saskatoon, Saskatchewan and the Newfoundland and Labrador Department of Natural Resources, Energy Branch. The map was produced by the Geological Survey of Canada (GSC) and the Newfoundland and Labrador Department of Natural Resources, Energy Branch.

GSC OPEN FILE 7302 / DOSSIER PUBLIC 7302 DE LA CGC  
NEWFOUNDLAND AND LABRADOR DEPARTMENT OF NATURAL RESOURCES, GEOLOGICAL SURVEY OPEN FILE 012H/2084  
AEROMAGNETIC SURVEY OF OFFSHORE WESTERN NEWFOUNDLAND  
LEVÉ AÉROMAGNÉTIQUE EXTRACÔTIER DE L'OUEST DE TERRE-NEUVE

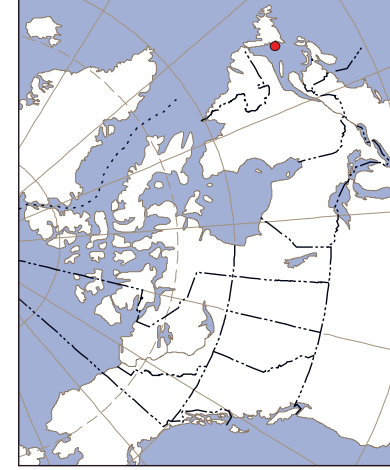
NTS 1:541 NW / SNS: 1:541 NS  
NEWFOUNDLAND AND LABRADOR / TERRE-NEUVE ET LABRADOR

SECOND VERTICAL DERIVATIVE OF THE MAGNETIC FIELD  
DERIVÉE SECONDE VERTICALE DU CHAMP MAGNÉTIQUE

Authors: Dumont, R. and Jones, A.

Localization of the compilation of the data was done by the Geological Survey of Canada, Saskatoon, Saskatchewan and the Newfoundland and Labrador Department of Natural Resources, Energy Branch. The map was produced by the Geological Survey of Canada (GSC) and the Newfoundland and Labrador Department of Natural Resources, Energy Branch.

SHEET / FEUILLET	MAP / CARTE
1.	Residual Total Magnetic Field
2.	Second vertical derivative of the magnetic field



MAP LOCATION - LOCALISATION DE LA CARTE

Second Vertical Derivative of the Magnetic Field

This map of the second vertical derivative of the magnetic field was compiled from data acquired during an aeromagnetic survey of the 1:50,000 scale coastal and inland topographic maps of Newfoundland and Labrador. The data were acquired during a 1997-1998 aeromagnetic survey of the 1:50,000 scale coastal and inland topographic maps of Newfoundland and Labrador. The data were acquired during a 1997-1998 aeromagnetic survey of the 1:50,000 scale coastal and inland topographic maps of Newfoundland and Labrador. The data were acquired during a 1997-1998 aeromagnetic survey of the 1:50,000 scale coastal and inland topographic maps of Newfoundland and Labrador.

A digital version of this map can be downloaded, at no charge, from the Web site of the Department of Natural Resources, Newfoundland and Labrador, at <http://www.gov.nl.ca/nr/>. The same information is also available, at no charge, from the Department of Natural Resources, Newfoundland and Labrador, at <http://www.gov.nl.ca/nr/>. The same information is also available, at no charge, from the Department of Natural Resources, Newfoundland and Labrador, at <http://www.gov.nl.ca/nr/>. The same information is also available, at no charge, from the Department of Natural Resources, Newfoundland and Labrador, at <http://www.gov.nl.ca/nr/>.

Dérivée seconde verticale du champ magnétique

Cette carte de la dérivée seconde verticale du champ magnétique a été compilée à partir de données acquises lors d'un levé aéro-magnétique à l'échelle de 1:50 000 de la carte topographique côtière et intérieure de Terre-Neuve et du Labrador en 1997-1998. Les données ont été acquises lors d'un levé aéro-magnétique à l'échelle de 1:50 000 de la carte topographique côtière et intérieure de Terre-Neuve et du Labrador en 1997-1998. Les données ont été acquises lors d'un levé aéro-magnétique à l'échelle de 1:50 000 de la carte topographique côtière et intérieure de Terre-Neuve et du Labrador en 1997-1998. Les données ont été acquises lors d'un levé aéro-magnétique à l'échelle de 1:50 000 de la carte topographique côtière et intérieure de Terre-Neuve et du Labrador en 1997-1998.

On peut télécharger gratuitement une version numérique de cette carte depuis la section MÉRAGE de l'Entrepôt de données géographiques de Ressources naturelles Canada à l'adresse Web <http://www.gov.nl.ca/nr/>. La même information est également disponible, sans frais, sur le site Web de Ressources naturelles Canada à l'adresse Web <http://www.gov.nl.ca/nr/>. La même information est également disponible, sans frais, sur le site Web de Ressources naturelles Canada à l'adresse Web <http://www.gov.nl.ca/nr/>. La même information est également disponible, sans frais, sur le site Web de Ressources naturelles Canada à l'adresse Web <http://www.gov.nl.ca/nr/>.

SYMBOLS PLANIMÉTRIQUES

Topographic contour	Courbe de niveau
Drainage	Drainage
Road	Road
Building	Building
Power line	Power line
Project limit	Project limit

GSC open file numbers in ref / Numéros de dossiers publics de la CGC en rouge

Newfoundland and Labrador Department of Natural Resources, Energy Branch

Data acquired by GSC in orange / Données acquises par GSC en orange

Data acquired by other sources in purple / Données acquises par d'autres sources en violet

NTS 1:541 NW / SNS: 1:541 NS

NEWFOUNDLAND AND LABRADOR / TERRE-NEUVE ET LABRADOR

SECOND VERTICAL DERIVATIVE OF THE MAGNETIC FIELD

DERIVÉE SECONDE VERTICALE DU CHAMP MAGNÉTIQUE

NTS 1:541 NW / SNS: 1:541 NS

NEWFOUNDLAND AND LABRADOR / TERRE-NEUVE ET LABRADOR

SECOND VERTICAL DERIVATIVE OF THE MAGNETIC FIELD

DERIVÉE SECONDE VERTICALE DU CHAMP MAGNÉTIQUE

NTS 1:541 NW / SNS: 1:541 NS

NEWFOUNDLAND AND LABRADOR / TERRE-NEUVE ET LABRADOR

SECOND VERTICAL DERIVATIVE OF THE MAGNETIC FIELD

DERIVÉE SECONDE VERTICALE DU CHAMP MAGNÉTIQUE

NTS 1:541 NW / SNS: 1:541 NS

NEWFOUNDLAND AND LABRADOR / TERRE-NEUVE ET LABRADOR

SECOND VERTICAL DERIVATIVE OF THE MAGNETIC FIELD

DERIVÉE SECONDE VERTICALE DU CHAMP MAGNÉTIQUE

NTS 1:541 NW / SNS: 1:541 NS

NEWFOUNDLAND AND LABRADOR / TERRE-NEUVE ET LABRADOR

SECOND VERTICAL DERIVATIVE OF THE MAGNETIC FIELD

DERIVÉE SECONDE VERTICALE DU CHAMP MAGNÉTIQUE

NTS 1:541 NW / SNS: 1:541 NS

NEWFOUNDLAND AND LABRADOR / TERRE-NEUVE ET LABRADOR

SECOND VERTICAL DERIVATIVE OF THE MAGNETIC FIELD

DERIVÉE SECONDE VERTICALE DU CHAMP MAGNÉTIQUE

NTS 1:541 NW / SNS: 1:541 NS

NEWFOUNDLAND AND LABRADOR / TERRE-NEUVE ET LABRADOR

SECOND VERTICAL DERIVATIVE OF THE MAGNETIC FIELD

DERIVÉE SECONDE VERTICALE DU CHAMP MAGNÉTIQUE

NTS 1:541 NW / SNS: 1:541 NS

NEWFOUNDLAND AND LABRADOR / TERRE-NEUVE ET LABRADOR

SECOND VERTICAL DERIVATIVE OF THE MAGNETIC FIELD

DERIVÉE SECONDE VERTICALE DU CHAMP MAGNÉTIQUE

NTS 1:541 NW / SNS: 1:541 NS

NEWFOUNDLAND AND LABRADOR / TERRE-NEUVE ET LABRADOR

SECOND VERTICAL DERIVATIVE OF THE MAGNETIC FIELD

DERIVÉE SECONDE VERTICALE DU CHAMP MAGNÉTIQUE

NTS 1:541 NW / SNS: 1:541 NS

NEWFOUNDLAND AND LABRADOR / TERRE-NEUVE ET LABRADOR

SECOND VERTICAL DERIVATIVE OF THE MAGNETIC FIELD

DERIVÉE SECONDE VERTICALE DU CHAMP MAGNÉTIQUE

NTS 1:541 NW / SNS: 1:541 NS

NEWFOUNDLAND AND LABRADOR / TERRE-NEUVE ET LABRADOR

SECOND VERTICAL DERIVATIVE OF THE MAGNETIC FIELD

DERIVÉE SECONDE VERTICALE DU CHAMP MAGNÉTIQUE

NTS 1:541 NW / SNS: 1:541 NS

NEWFOUNDLAND AND LABRADOR / TERRE-NEUVE ET LABRADOR

SECOND VERTICAL DERIVATIVE OF THE MAGNETIC FIELD

DERIVÉE SECONDE VERTICALE DU CHAMP MAGNÉTIQUE

NTS 1:541 NW / SNS: 1:541 NS

NEWFOUNDLAND AND LABRADOR / TERRE-NEUVE ET LABRADOR

SECOND VERTICAL DERIVATIVE OF THE MAGNETIC FIELD

DERIVÉE SECONDE VERTICALE DU CHAMP MAGNÉTIQUE

NTS 1:541 NW / SNS: 1:541 NS

NEWFOUNDLAND AND LABRADOR / TERRE-NEUVE ET LABRADOR

SECOND VERTICAL DERIVATIVE OF THE MAGNETIC FIELD

DERIVÉE SECONDE VERTICALE DU CHAMP MAGNÉTIQUE

NTS 1:541 NW / SNS: 1:541 NS

NEWFOUNDLAND AND LABRADOR / TERRE-NEUVE ET LABRADOR

SECOND VERTICAL DERIVATIVE OF THE MAGNETIC FIELD

DERIVÉE SECONDE VERTICALE DU CHAMP MAGNÉTIQUE

NTS 1:541 NW / SNS: 1:541 NS