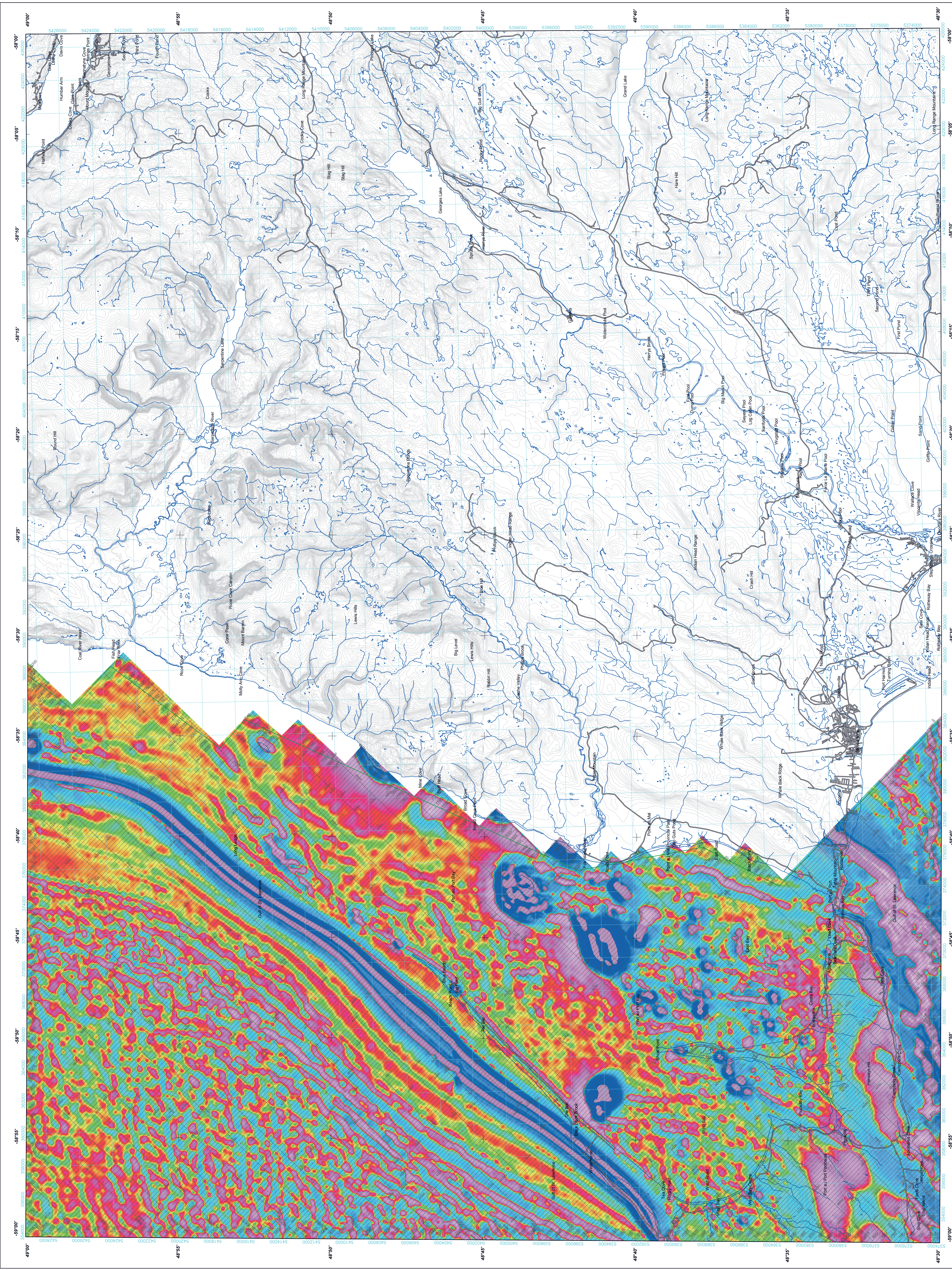


SECOND VERTICAL DERIVATIVE OF THE MAGNETIC FIELD

DÉRIVÉE SECONDE VERTICALE DU CHAMP MAGNÉTIQUE



TOPOGRAPHIC CONTOUR INTERVAL 30 METRES

The aeromagnetic survey and the production of this map were funded by the Newfoundland and Labrador Department of Natural Resources, Energy Branch, through the Offshore Geoscience Data Acquisition Program (OGDAP). The aeromagnetic survey was conducted by the Geological Survey of Canada (GSC) in 2012. The map was produced by the Geological Survey of Canada (GSC) in 2013. The map is titled 'SECOND VERTICAL DERIVATIVE OF THE MAGNETIC FIELD' and 'DÉRIVÉE SECONDE VERTICALE DU CHAMP MAGNÉTIQUE'.

Authors: Dumont, R. and Jones, A.

Data acquisition and compilation by Geologic Airborne Surveys, Saskatoon, Saskatchewan and Territorial Airborne Surveys, St. John's, Newfoundland and Labrador. Contract and project management by the Geological Survey of Canada, Ottawa, Ontario.

GSC OPEN FILE 7292 / DOSSIER PUBLIC 7292 DE LA CGC

AEROMAGNETIC SURVEY OF OFFSHORE WESTERN NEWFOUNDLAND
LEVÉ AÉROMAGNÉTIQUE EXTRACÔTIER DE L'OUEST DE TERRE-NEUVE

NTS 43 NE SNRS 43 NE
NEWFOUNDLAND AND LABRADOR / TERRE-NEUVE ET LABRADOR

SECOND VERTICAL DERIVATIVE OF THE MAGNETIC FIELD
DÉRIVÉE SECONDE VERTICALE DU CHAMP MAGNÉTIQUE

Authors: Dumont, R. and Jones, A.

Localization et la compilation des données ont été effectuées par Geologic Airborne Surveys, Saskatoon (Saskatchewan) et Territorial Airborne Surveys, St. John's (Terre-Neuve-et-Labrador). Le contrat et la gestion du projet ont été effectués par la Commission géologique du Canada, Ottawa (Ontario).

SHEET SUMMARY / SOMMAIRE DES FEUILLETS	
SHEET / FEUILLET	MAP / CARTE
1.	Residual Total Magnetic Field
2.	Second vertical derivative of the magnetic field



EQUIDISTANCE DES COURBES TOPOGRAPHIQUES: 30 METRES

TOPOGRAPHIC CONTOUR INTERVAL 30 METRES

The aeromagnetic survey and the production of this map were funded by the Newfoundland and Labrador Department of Natural Resources, Energy Branch, through the Offshore Geoscience Data Acquisition Program (OGDAP). The aeromagnetic survey was conducted by the Geological Survey of Canada (GSC) in 2012. The map was produced by the Geological Survey of Canada (GSC) in 2013. The map is titled 'SECOND VERTICAL DERIVATIVE OF THE MAGNETIC FIELD' and 'DÉRIVÉE SECONDE VERTICALE DU CHAMP MAGNÉTIQUE'.

Authors: Dumont, R. and Jones, A.

Data acquisition and compilation by Geologic Airborne Surveys, Saskatoon, Saskatchewan and Territorial Airborne Surveys, St. John's, Newfoundland and Labrador. Contract and project management by the Geological Survey of Canada, Ottawa, Ontario.

Second Vertical Derivative of the Magnetic Field

This map of the second vertical derivative of the magnetic field was compiled from data acquired during an aeromagnetic survey of the offshore waters of Newfoundland and Labrador, Canada, in 2012. The aeromagnetic survey was conducted by the Geological Survey of Canada (GSC) in 2012. The map was produced by the Geological Survey of Canada (GSC) in 2013. The map is titled 'SECOND VERTICAL DERIVATIVE OF THE MAGNETIC FIELD' and 'DÉRIVÉE SECONDE VERTICALE DU CHAMP MAGNÉTIQUE'.

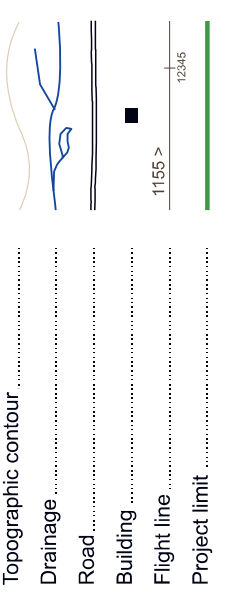
A digital version of the map can be downloaded, at no charge, from Natural Resources Canada's Geoscience Data Catalogue. The data were acquired during an aeromagnetic survey of the offshore waters of Newfoundland and Labrador, Canada, in 2012. The aeromagnetic survey was conducted by the Geological Survey of Canada (GSC) in 2012. The map was produced by the Geological Survey of Canada (GSC) in 2013. The map is titled 'SECOND VERTICAL DERIVATIVE OF THE MAGNETIC FIELD' and 'DÉRIVÉE SECONDE VERTICALE DU CHAMP MAGNÉTIQUE'.

Dérivée seconde verticale du champ magnétique

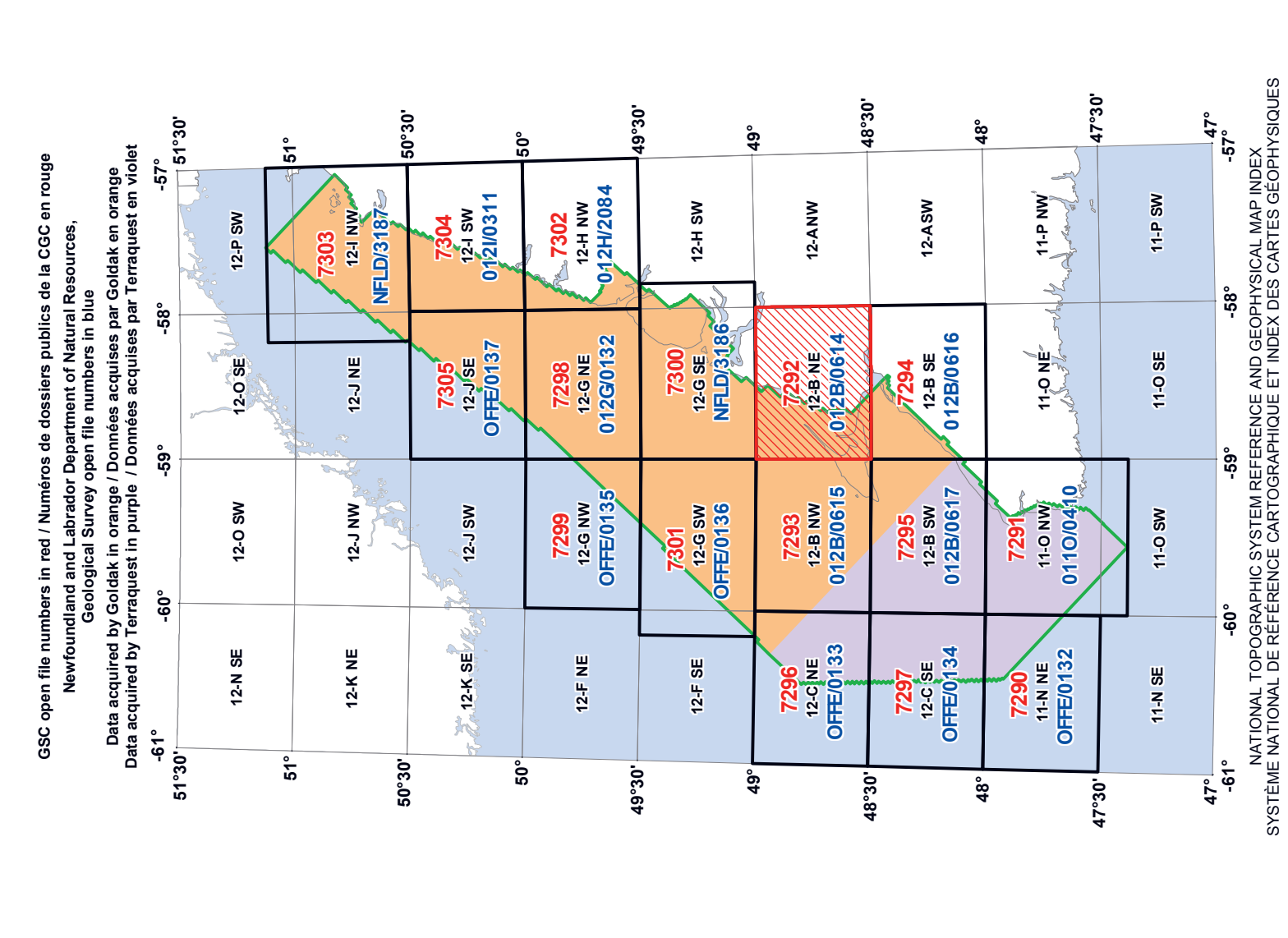
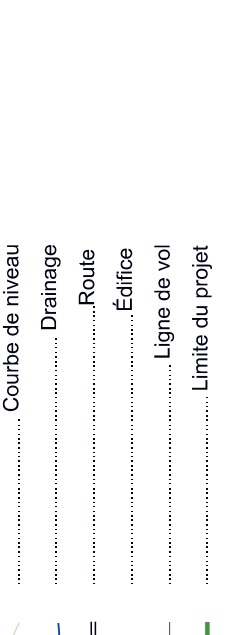
Cette carte de la dérivée seconde verticale du champ magnétique a été compilée à partir de données acquises lors d'un levé aéro-magnétique des eaux côtières de Terre-Neuve-et-Labrador, Canada, en 2012. Les données ont été acquises par la Commission géologique du Canada (CGC) en 2012. La carte a été produite par la Commission géologique du Canada (CGC) en 2013. La carte est intitulée 'DÉRIVÉE SECONDE VERTICALE DU CHAMP MAGNÉTIQUE' et 'SECOND VERTICAL DERIVATIVE OF THE MAGNETIC FIELD'.

On peut aussi télécharger gratuitement une version numérique de cette carte depuis la section MIRAGE du Répertoire des données géologiques du Canada (GSC). Les données ont été acquises par la Commission géologique du Canada (CGC) en 2012. La carte a été produite par la Commission géologique du Canada (CGC) en 2013. La carte est intitulée 'DÉRIVÉE SECONDE VERTICALE DU CHAMP MAGNÉTIQUE' et 'SECOND VERTICAL DERIVATIVE OF THE MAGNETIC FIELD'.

PLANIMETRIC SYMBOLS



SYMBOLS PLANIMÉTRIQUES



AEROMAGNETIC SURVEY OF OFFSHORE WESTERN NEWFOUNDLAND
LEVÉ AÉROMAGNÉTIQUE EXTRACÔTIER DE L'OUEST DE TERRE-NEUVE

OPEN FILE DOSSIER PUBLIC	
7292	012B0614
GEOLOGICAL SURVEY OF CANADA COMMISSION GÉOLOGIQUE DU CANADA	
2013	2013
SHEET 2 OF 2 FEUILLET 2 DE 2	

Recommended citation:
Dumont, R. and Jones, A., 2013. The Aeromagnetic Survey of Offshore Western Newfoundland, NTS 43 NE, SNRS 43 NE. Newfoundland and Labrador. Geological Survey of Canada, Open File 7292. 1:100 000 scale. 11 000 000.