

Geological symbols and abbreviations table including Quaternary, Paleozoic or Proterozoic, Proterozoic Mesoproterozoic, Paleoproterozoic, Archean, Slave Province Proterozoic, and Neoproterozoic/Archean/Proterozoic symbols.

RAE DOMAIN geological descriptions and abbreviations, including units like Anorthite, amphibolite, gabbro, and various quartzite and gneiss types.

HEARNE DOMAIN geological descriptions and abbreviations, including units like Chignay-Wahman Batholith, Koyuk Group, and various gneiss and schist types.

SLAVE PROVINCE PROTEROZOIC geological descriptions and abbreviations, including units like Fortescue gabbro, and various sedimentary and igneous rocks.

NEOARCHAIC AND/OR PALEOPROTEROZOIC geological descriptions and abbreviations, including units like Early Paleoproterozoic sedimentary sequences and various igneous and metamorphic rocks.

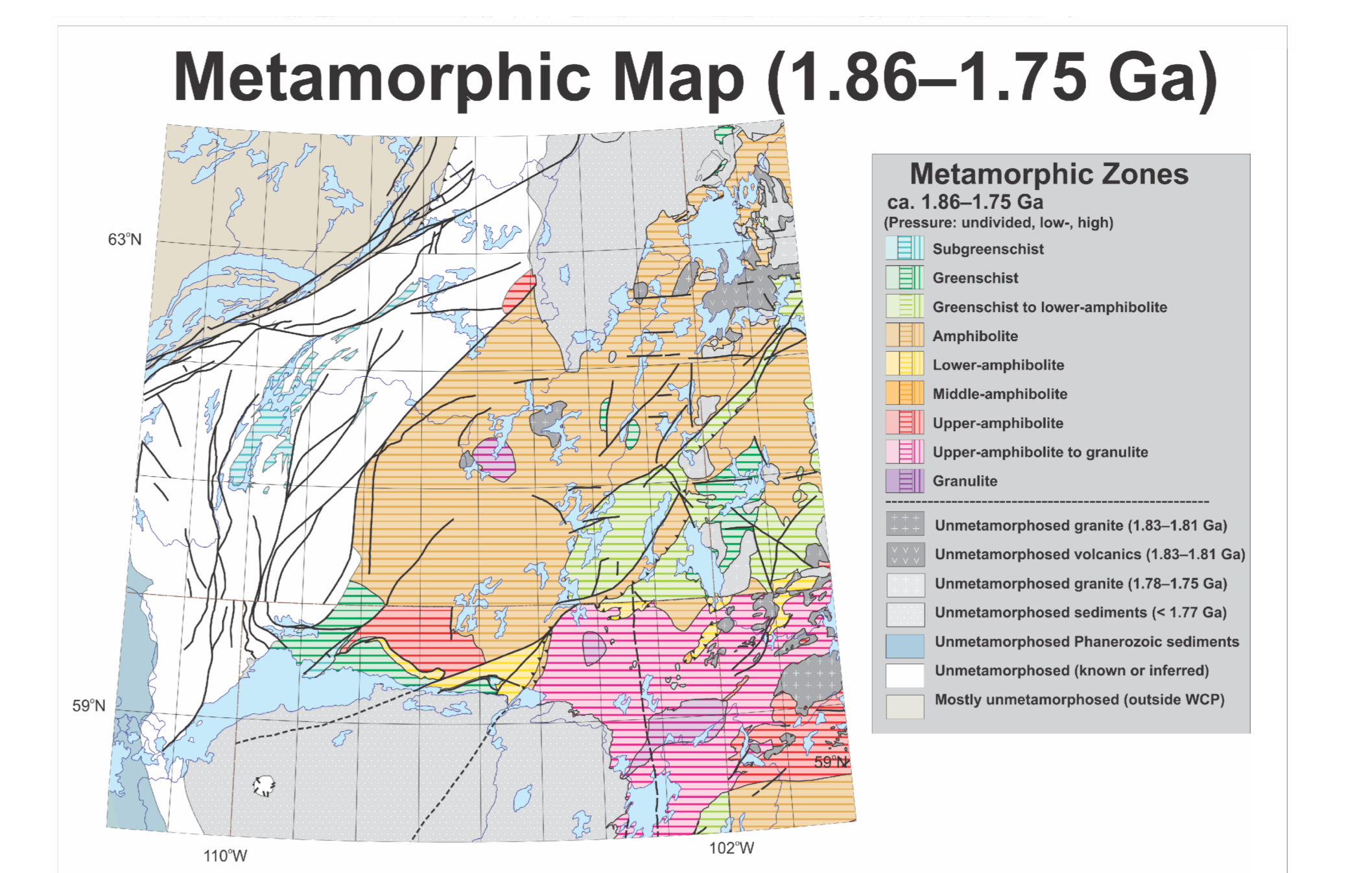


Figure 1. Metamorphic map for the ca. 1.86-1.75 Ga time period (Hudsonian orogeny). Modified from Berman (2010), who provides point source geochronological constraints.

REFERENCES for Figure 1, listing geological surveys and scientific publications related to the 1.86-1.75 Ga period.

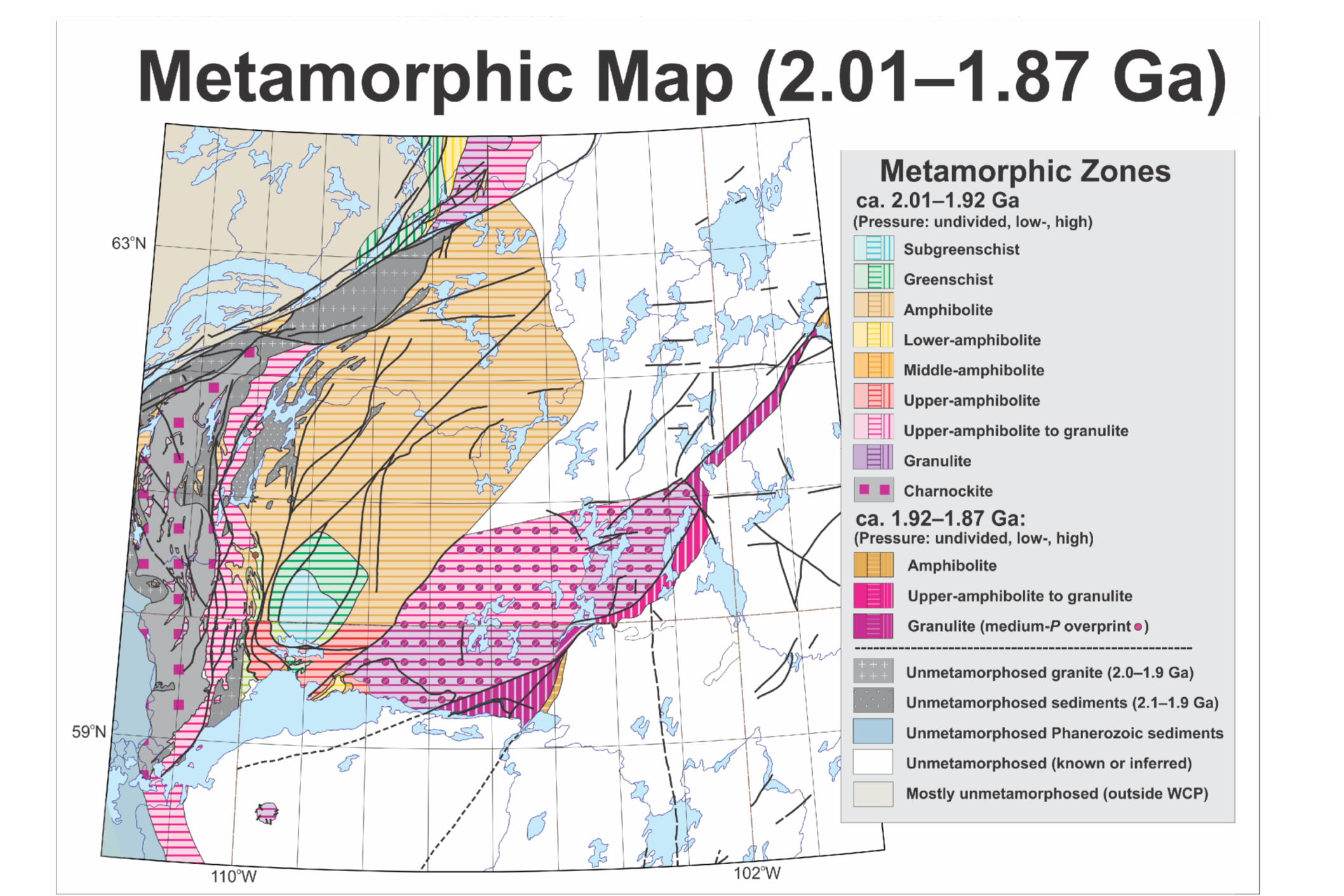


Figure 2. Metamorphic map of the ca. 2.01-1.87 Ga Telson-Thelon and ca. 1.91-1.87 Ga Sveinørd complexes. Modified from Berman (2010), who provides point source geochronological constraints.

REFERENCES for Figure 2, listing geological surveys and scientific publications related to the 2.01-1.87 Ga period.

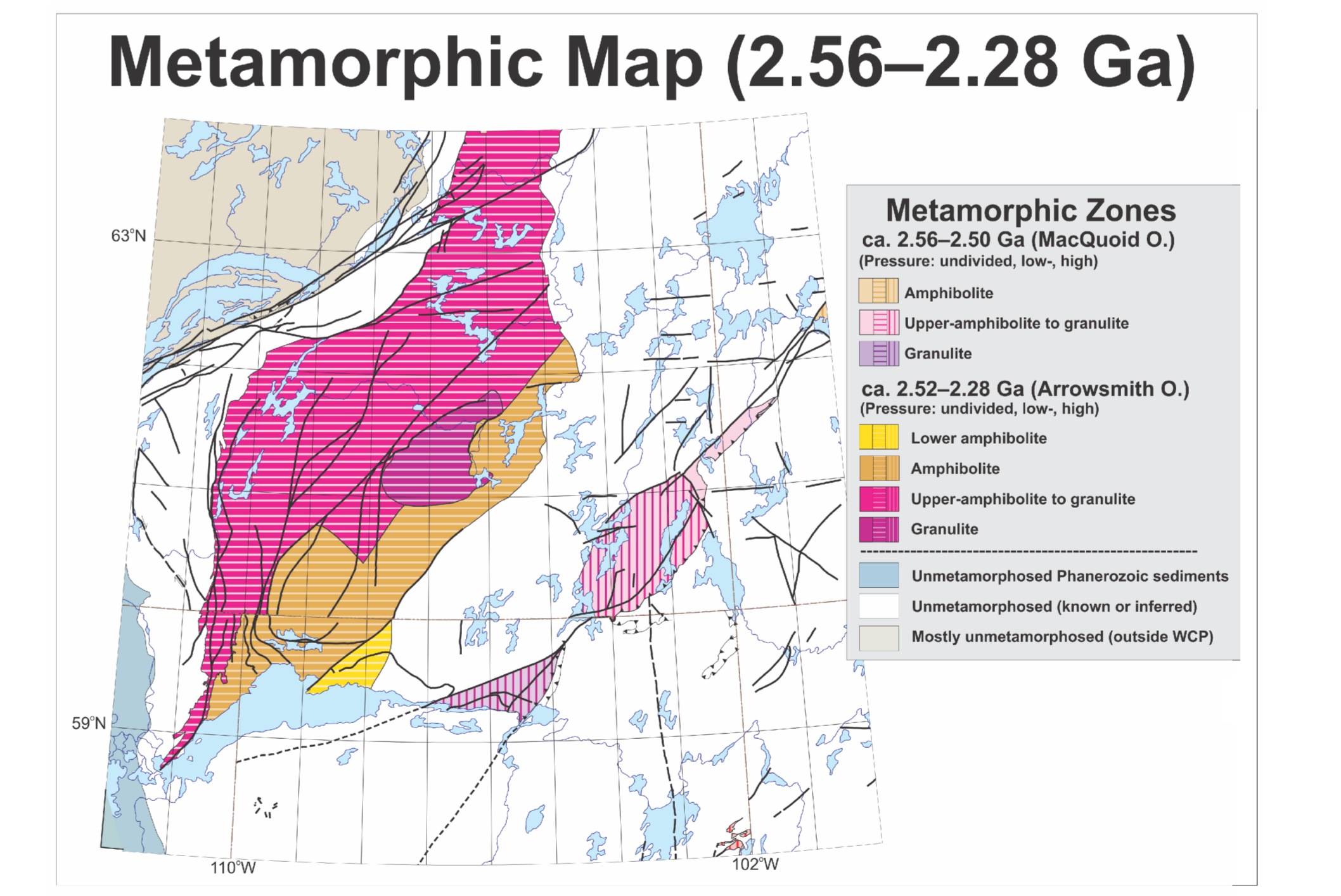


Figure 3. Metamorphic map of the ca. 2.56-2.50 Ga MacQuaid and ca. 2.32-2.28 Ga Arrowsmith orogens. Modified from Berman (2010), who provides point source geochronological constraints.

REFERENCES for Figure 3, listing geological surveys and scientific publications related to the 2.56-2.28 Ga period.

Table 1: Selected isotopic ages for the South Rae and western Heerne province map area. Columns include Number, Age (Ma), Error Plus, Error Minus, Age Interpretation, Age Method, LONGITUDE, LATITUDE, and AUTHORS.

Table 1. Selected isotopic ages for the South Rae and western Heerne province map area. References from Skulski and Vlasov, 1999, except Marlet et al., 2009. See references cited in the text for more details.

Table 2: Selected mineral occurrences of the South Rae and western Heerne province map area. Columns include Deposit No., Name, Status, Classification, Longitude, Latitude, SYM, REF, and NO.

Table 2. Selected mineral occurrences of the South Rae and western Heerne province map area. Selected mineral occurrences from NDBMR (http://www.ndbmr.gc.ca/minerals) and Saskatchewan Mineral Deposit Index (http://www.saskminerals.ca/ndmi/).