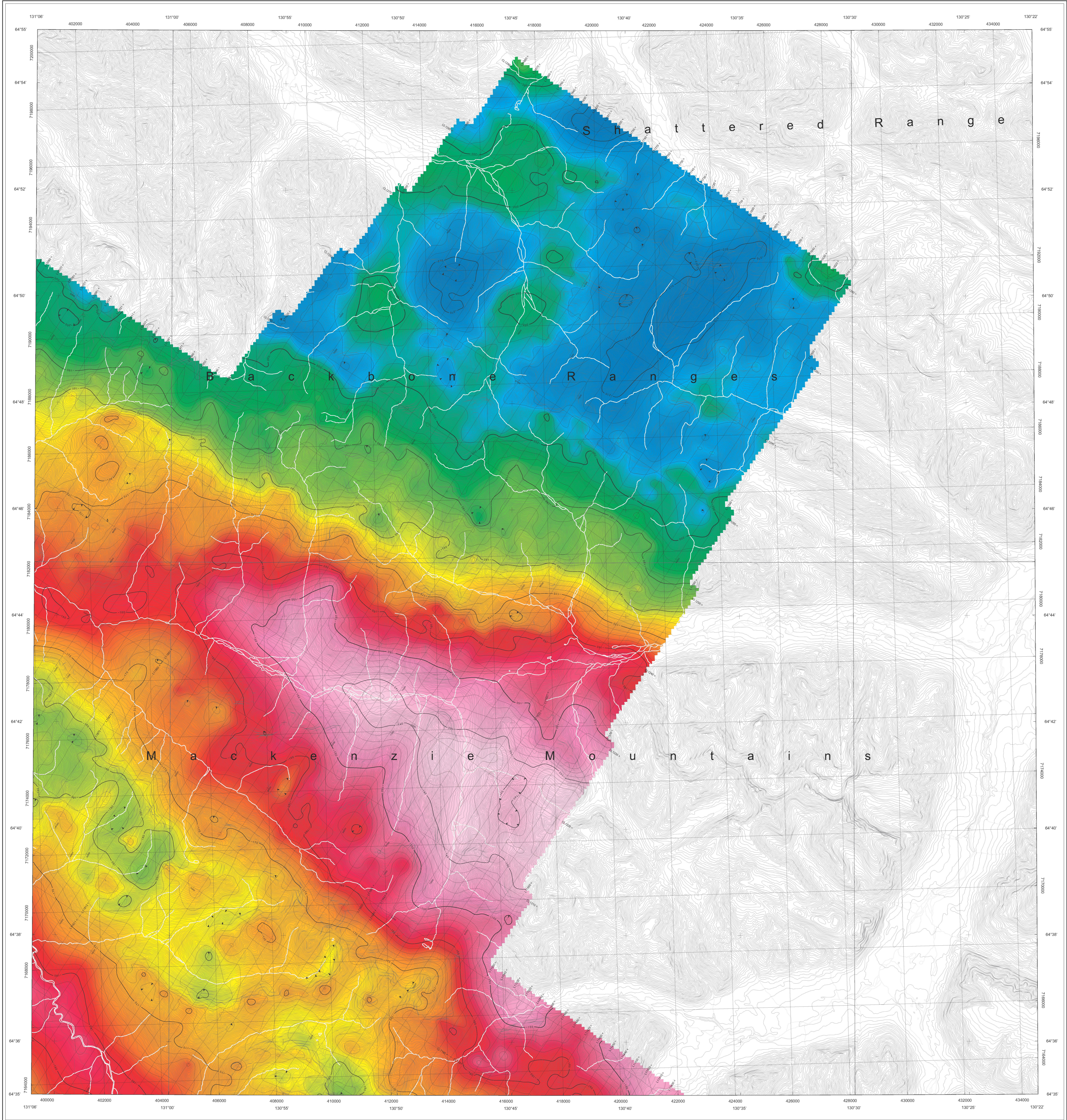


Geophysical Series / Residual Total Magnetic Field



This radiometric and aeromagnetic survey and the production of this map were funded by the Northwest Territories Geoscience Office (NTGO) through the Strategic Investments in Northern Economic Development (SINED) program of the Canadian Northern Economic Development Agency (CANED)...

Ce levé radiométrique et aéromagnétique et la production de cette carte ont été subventionnés par le Bureau géophysique des Territoires du Nord-Ouest (BGTNO) par l'entremise du programme d'investissements stratégiques dans le développement économique du Nord (SINED) de l'Agence canadienne de développement économique du Nord (CANED)...



Location Map - Carte de localisation

Authors: R. Fortin, M. Coyle, B. Fischer, J. Carson and R. Dumont

Data acquisition, compilation and map production by Sandor Geophysics Limited, Ottawa, Ontario. Contract and project management by the Northwest Territories Geoscience Office, Yellowknife, Northwest Territories. Technical review by the Geological Survey of Canada, Ottawa, Ontario.

GSC OPEN FILE 7098 / DOSSIER PUBLIC 7098 DE LA CGC NWT OPEN FILE 2012-11

AIRBORNE GEOPHYSICAL SURVEY OF THE SOURCE PEAKS AREA, NORTHWEST TERRITORIES / LEVÉ GÉOPHYSIQUE AÉROPORTÉ DE LA RÉGION DES PICCS SOURCE, TERRITOIRES DU NORD-OUEST

RESIDUAL TOTAL MAGNETIC FIELD / COMPOSANTE RÉSIDUELLE DU CHAMP MAGNÉTIQUE TOTAL

Scale 1:500 000 - Echelle 1/500 000

Authors: R. Fortin, M. Coyle, B. Fischer, J. Carson et R. Dumont

L'acquisition et la compilation des données, ainsi que la production des cartes, ont été effectuées par Sandor Geophysics Limited, Ottawa (Ontario). La production et la gestion du projet ont été effectuées par le Bureau géophysique des Territoires du Nord-Ouest, Yellowknife (Territoires du Nord-Ouest). Expertise technique fournie par la Commission géologique du Canada, Ottawa (Ontario).

Geophysical Series / Residual Total Magnetic Field. This radiometric and aeromagnetic survey and the production of this map were funded by the Northwest Territories Geoscience Office (NTGO) through the Strategic Investments in Northern Economic Development (SINED) program of the Canadian Northern Economic Development Agency (CANED)...

Geophysical Series / Residual Total Magnetic Field. This radiometric and aeromagnetic survey and the production of this map were funded by the Northwest Territories Geoscience Office (NTGO) through the Strategic Investments in Northern Economic Development (SINED) program of the Canadian Northern Economic Development Agency (CANED)...

Geophysical Series / Residual Total Magnetic Field. This radiometric and aeromagnetic survey and the production of this map were funded by the Northwest Territories Geoscience Office (NTGO) through the Strategic Investments in Northern Economic Development (SINED) program of the Canadian Northern Economic Development Agency (CANED)...

Geophysical Series / Residual Total Magnetic Field. This radiometric and aeromagnetic survey and the production of this map were funded by the Northwest Territories Geoscience Office (NTGO) through the Strategic Investments in Northern Economic Development (SINED) program of the Canadian Northern Economic Development Agency (CANED)...

Geophysical Series / Residual Total Magnetic Field. This radiometric and aeromagnetic survey and the production of this map were funded by the Northwest Territories Geoscience Office (NTGO) through the Strategic Investments in Northern Economic Development (SINED) program of the Canadian Northern Economic Development Agency (CANED)...

Geophysical Series / Residual Total Magnetic Field. This radiometric and aeromagnetic survey and the production of this map were funded by the Northwest Territories Geoscience Office (NTGO) through the Strategic Investments in Northern Economic Development (SINED) program of the Canadian Northern Economic Development Agency (CANED)...

Geophysical Series / Residual Total Magnetic Field. This radiometric and aeromagnetic survey and the production of this map were funded by the Northwest Territories Geoscience Office (NTGO) through the Strategic Investments in Northern Economic Development (SINED) program of the Canadian Northern Economic Development Agency (CANED)...

Geophysical Series / Residual Total Magnetic Field. This radiometric and aeromagnetic survey and the production of this map were funded by the Northwest Territories Geoscience Office (NTGO) through the Strategic Investments in Northern Economic Development (SINED) program of the Canadian Northern Economic Development Agency (CANED)...

Geophysical Series / Residual Total Magnetic Field. This radiometric and aeromagnetic survey and the production of this map were funded by the Northwest Territories Geoscience Office (NTGO) through the Strategic Investments in Northern Economic Development (SINED) program of the Canadian Northern Economic Development Agency (CANED)...

Geophysical Series / Residual Total Magnetic Field. This radiometric and aeromagnetic survey and the production of this map were funded by the Northwest Territories Geoscience Office (NTGO) through the Strategic Investments in Northern Economic Development (SINED) program of the Canadian Northern Economic Development Agency (CANED)...

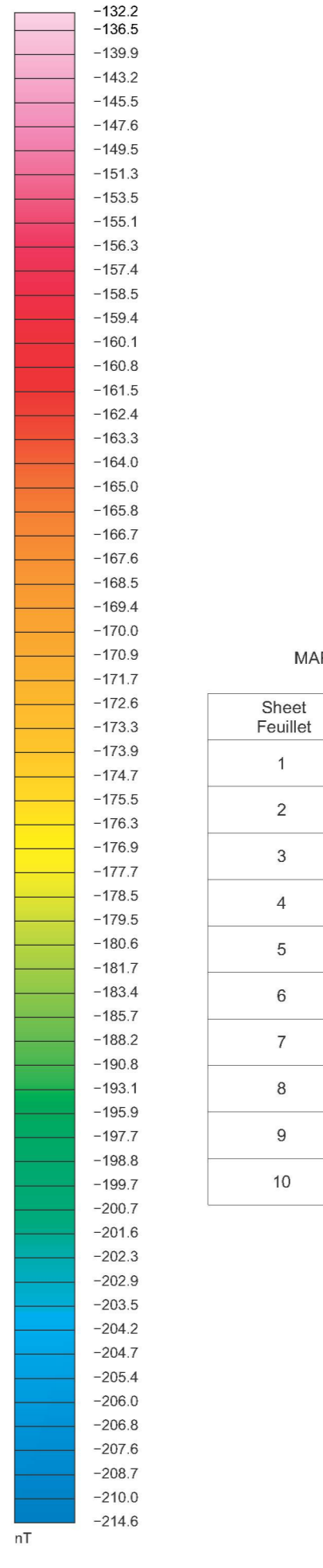
Geophysical Series / Residual Total Magnetic Field. This radiometric and aeromagnetic survey and the production of this map were funded by the Northwest Territories Geoscience Office (NTGO) through the Strategic Investments in Northern Economic Development (SINED) program of the Canadian Northern Economic Development Agency (CANED)...

Geophysical Series / Residual Total Magnetic Field. This radiometric and aeromagnetic survey and the production of this map were funded by the Northwest Territories Geoscience Office (NTGO) through the Strategic Investments in Northern Economic Development (SINED) program of the Canadian Northern Economic Development Agency (CANED)...

Geophysical Series / Residual Total Magnetic Field. This radiometric and aeromagnetic survey and the production of this map were funded by the Northwest Territories Geoscience Office (NTGO) through the Strategic Investments in Northern Economic Development (SINED) program of the Canadian Northern Economic Development Agency (CANED)...

Geophysical Series / Residual Total Magnetic Field. This radiometric and aeromagnetic survey and the production of this map were funded by the Northwest Territories Geoscience Office (NTGO) through the Strategic Investments in Northern Economic Development (SINED) program of the Canadian Northern Economic Development Agency (CANED)...

Geophysical Series / Residual Total Magnetic Field. This radiometric and aeromagnetic survey and the production of this map were funded by the Northwest Territories Geoscience Office (NTGO) through the Strategic Investments in Northern Economic Development (SINED) program of the Canadian Northern Economic Development Agency (CANED)...



PLANIMETRIC SYMBOLS / SYMBOLES PLANIMÉTRIQUES. Table listing symbols for contours, drainage, and magnetic depression.

ISOMAGNETIC LINES / LIGNES ISOMAGNÉTIQUES. Table showing symbols for isomagnetic lines and magnetic depression.

MAP SHEET SUMMARY / SOMMAIRE DES FEUILLETS. Table listing map sheets and their contents.



RESIDUAL TOTAL MAGNETIC FIELD / AIRBORNE GEOPHYSICAL SURVEY OF THE SOURCE PEAKS AREA, NORTHWEST TERRITORIES / PARTS OF NTS 106-B/9, 106-B/10, 106-B/11, 106-B/14, 106-B/15, AND 106-B/16

COMPOSANTE RÉSIDUELLE DU CHAMP MAGNÉTIQUE TOTAL / LEVÉ GÉOPHYSIQUE AÉROPORTÉ DE LA RÉGION DES PICCS SOURCE, TERRITOIRES DU NORD-OUEST / SNRC PARTIES DE 106-B/9, 106-B/10, 106-B/11, 106-B/14, 106-B/15 ET 106-B/16

Recommended citation for GSC publication: Fortin, R., Coyle, M., Fischer, B., Carson, J., and Dumont, R., 2012. Airborne Geophysical Survey of the Source Peaks area, Northwest Territories, parts of NTS 106-B/9, 106-B/10, 106-B/11, 106-B/14, 106-B/15, and 106-B/16. Geological Survey of Canada, Open File 7098, scale 1:500 000.

Recommended citation for NTGO publication: Fortin, R., Coyle, M., Fischer, B., Carson, J., and Dumont, R., 2012. Levé géophysique aéroporté de la région des pics Source, Territoires du Nord-Ouest, parties de NTS 106-B/9, 106-B/10, 106-B/11, 106-B/14, 106-B/15 et 106-B/16. Bureau géophysique des Territoires du Nord-Ouest, NWT Open File 2012-11, 10 maps, scale 1:500 000.

Digital versions of this map, and corresponding digital profile and gridded data, can be downloaded at no charge, or accepted by mail for a small fee, from the Northwest Territories Geoscience Office...

Digital versions of this map, corresponding digital profile and gridded data, and similar data for adjacent aeromagnetic and gamma-ray spectrometry surveys can be downloaded at no charge from Natural Resources Canada's Geoscience Data Repository at http://geodata.nrc.ca/online/...

On peut télécharger gratuitement, ou obtenir par la poste pour une somme modique, des versions numériques de cette carte et des données numériques correspondantes en format profil et en format maillé, en s'adressant au Bureau géophysique des Territoires du Nord-Ouest...

On peut télécharger gratuitement, ou obtenir par la poste pour une somme modique, des versions numériques de cette carte et des données numériques correspondantes en format profil et en format maillé, en s'adressant au Bureau géophysique des Territoires du Nord-Ouest...

Recommended citation for GSC publication: Fortin, R., Coyle, M., Fischer, B., Carson, J., and Dumont, R., 2012. Airborne Geophysical Survey of the Source Peaks area, Northwest Territories, parts of NTS 106-B/9, 106-B/10, 106-B/11, 106-B/14, 106-B/15, and 106-B/16. Geological Survey of Canada, Open File 7098, scale 1:500 000.

Recommended citation for NTGO publication: Fortin, R., Coyle, M., Fischer, B., Carson, J., and Dumont, R., 2012. Levé géophysique aéroporté de la région des pics Source, Territoires du Nord-Ouest, parties de NTS 106-B/9, 106-B/10, 106-B/11, 106-B/14, 106-B/15 et 106-B/16. Bureau géophysique des Territoires du Nord-Ouest, NWT Open File 2012-11, 10 maps, scale 1:500 000.