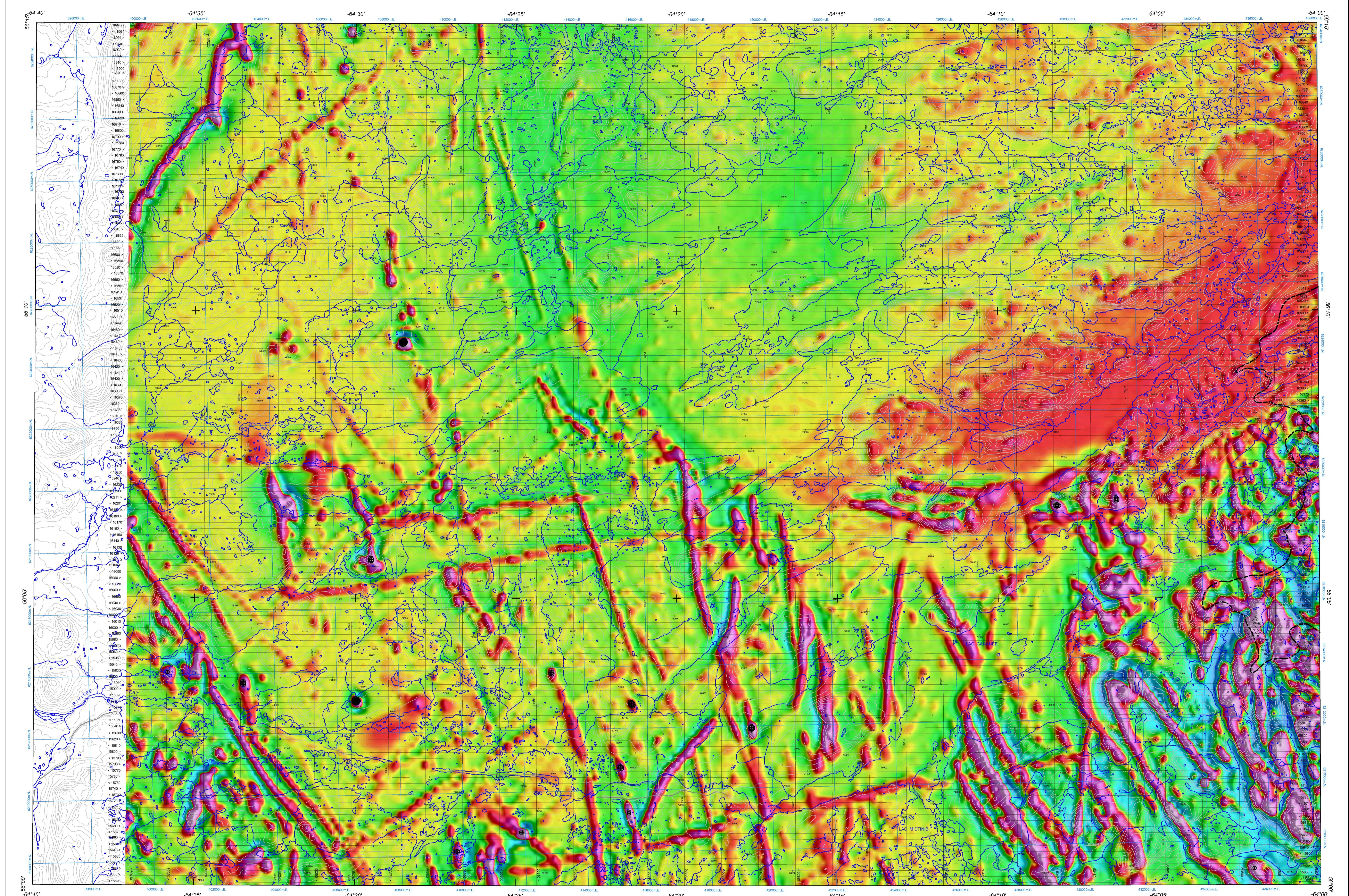


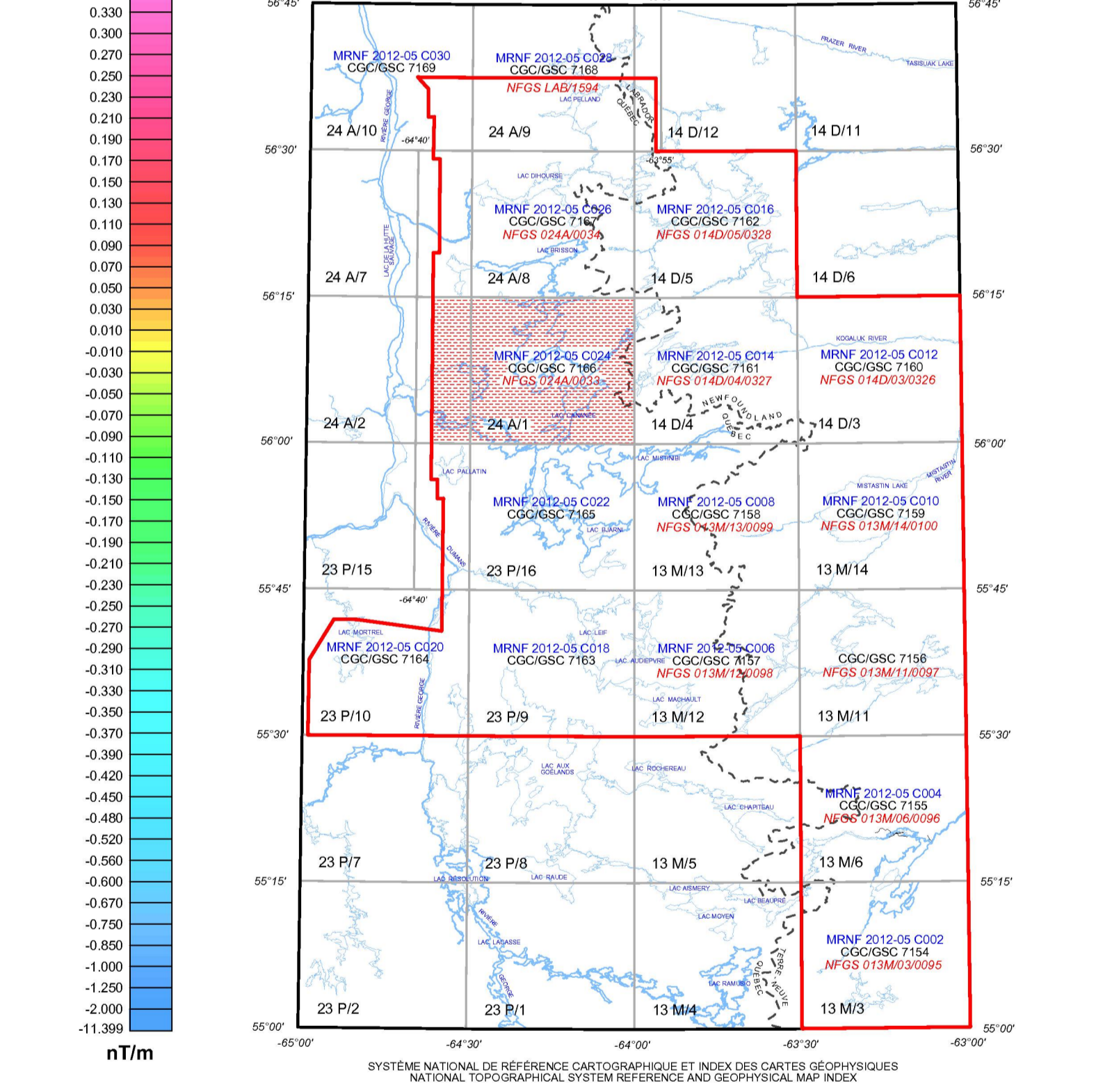
DÉRIVÉE PREMIÈRE VERTICALE DU CHAMP MAGNÉTIQUE

FIRST VERTICAL DERIVATIVE OF THE MAGNETIC FIELD



Dérivée première verticale du champ magnétique... This map of the first vertical derivative of the magnetic field was compiled from data acquired during an aeromagnetic survey carried out by Geo Data Solutions (GDS) Inc. and Geomatics International during the period from February 16 to April 16, 2012.

Keating Correlation Coefficients... This pattern recognition technique (Keating, 1995) for identifying roughly circular anomalies consists of computing the correlation coefficient over a moving window, between a vertical cylinder model anomaly and the gridded magnetic data.



DOSSIER PUBLIC 7166 DE LA CGC / GSC OPEN FILE 7166... MINISTÈRE DES RESSOURCES NATURELLES ET DE LA FAUNE DU QUÉBEC, DP 2012-05 C024

LEVÉ AÉROMAGNÉTIQUE DE LA RÉGION DU BATHOLITE DE MISTASTIN... AEROMAGNETIC SURVEY MISTASTIN BATHOLITH

Auteurs : R. Dumont et A. Jones... Acquisition et compilation des données et production des cartes par Geo Data Solutions GDS Inc., Laval (Québec)



SOMMAIRE DES FEUILLETS / MAP SHEET SUMMARY... Carte / Map... Composante résiduelle du champ magnétique total