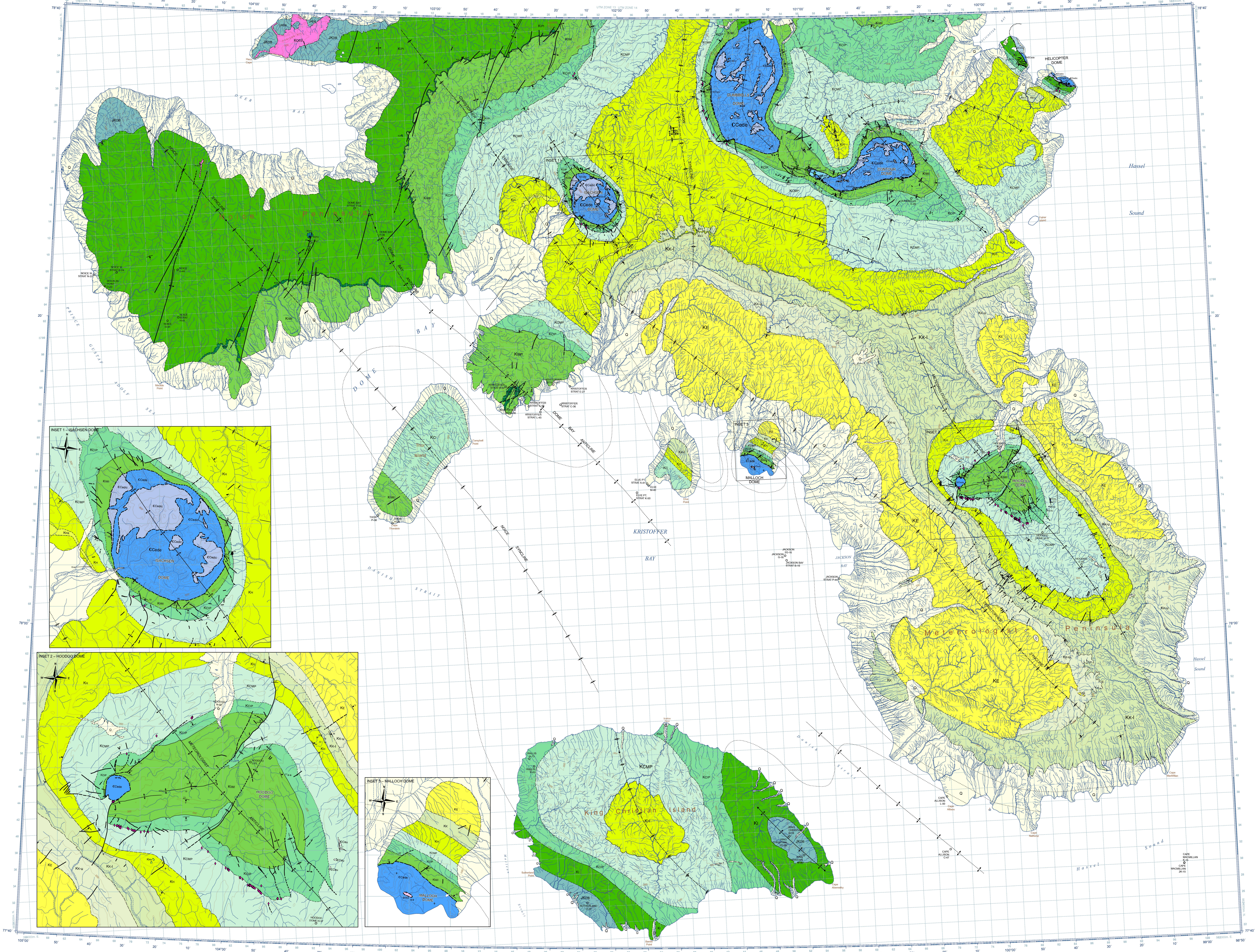


INTRODUCTION
The geology of the southern part of Ellef Ringnes Island is described in this map. The map covers the area from 78°40'N to 79°20'N and 100°00'W to 100°40'W. The map is based on data collected during the 1970s and 1980s. The map is a preliminary version and is subject to change as more data becomes available.



DESCRIPTIVE NOTES
This map is a preliminary version and is subject to change as more data becomes available. The map is based on data collected during the 1970s and 1980s. The map is a preliminary version and is subject to change as more data becomes available.

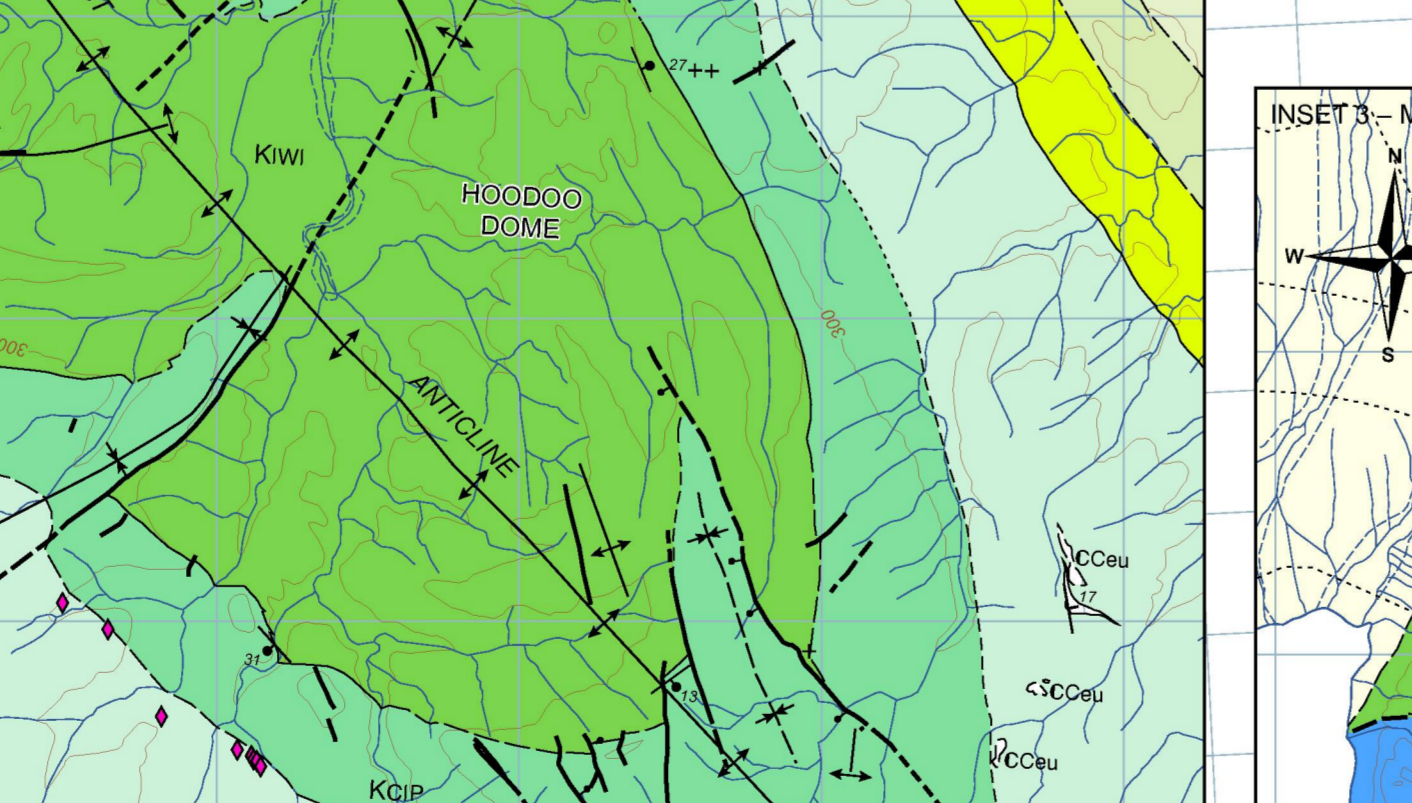
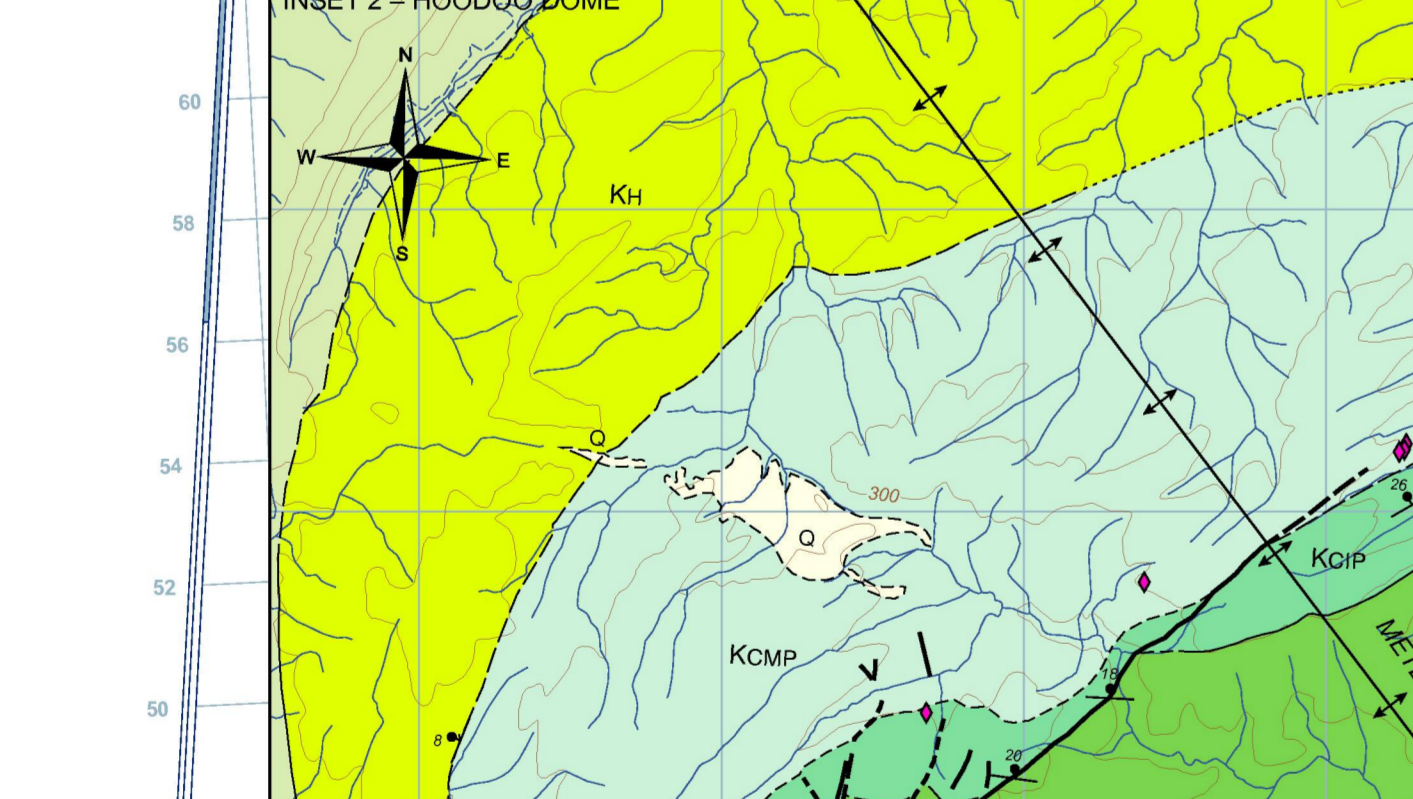
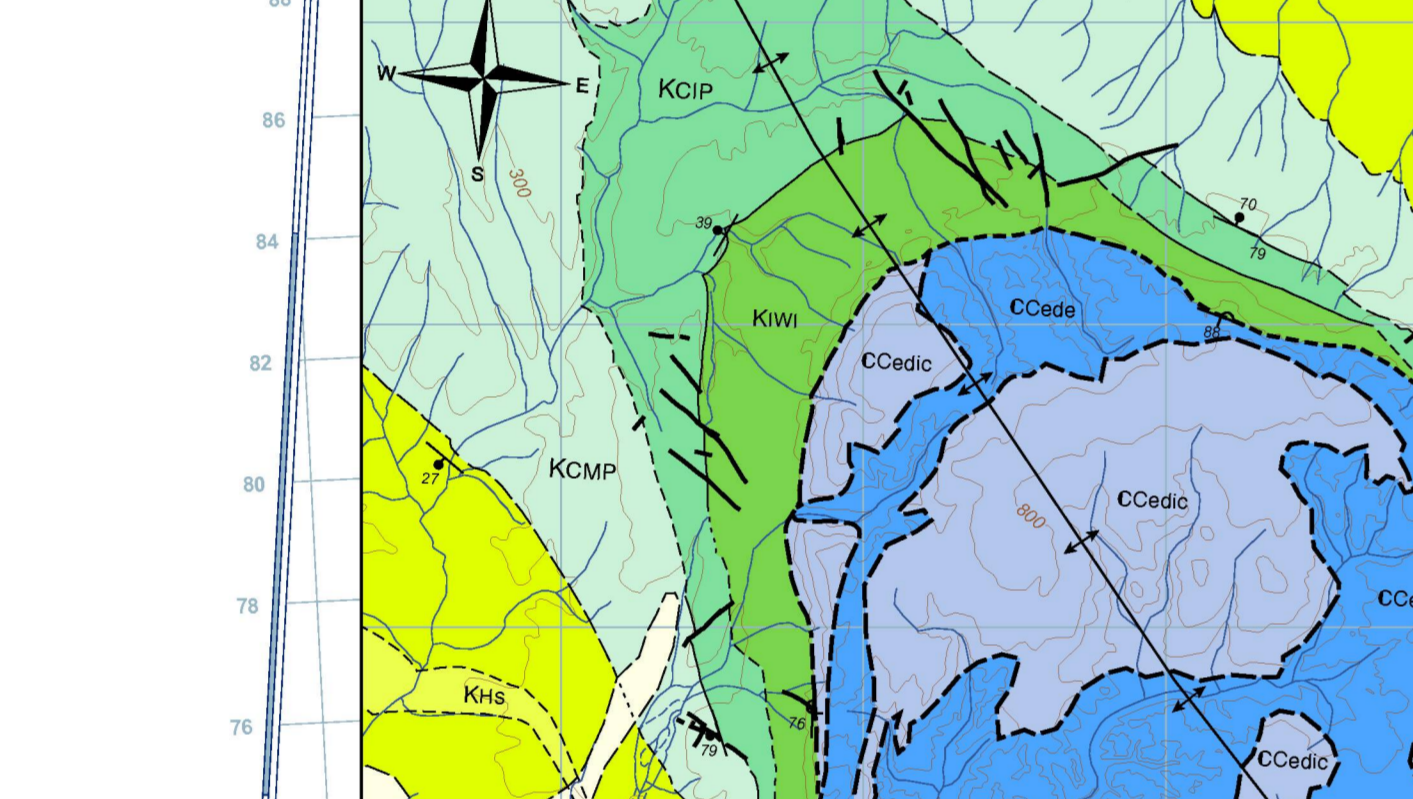
GENERAL GEOLOGY
The geology of the southern part of Ellef Ringnes Island is described in this map. The map covers the area from 78°40'N to 79°20'N and 100°00'W to 100°40'W. The map is based on data collected during the 1970s and 1980s. The map is a preliminary version and is subject to change as more data becomes available.

STRUCTURE
The structure of the southern part of Ellef Ringnes Island is described in this map. The map covers the area from 78°40'N to 79°20'N and 100°00'W to 100°40'W. The map is based on data collected during the 1970s and 1980s. The map is a preliminary version and is subject to change as more data becomes available.

REFERENCES
Baker, J.R., 1970. Geology of the southern part of Ellef Ringnes Island, Canadian Geographical Survey of Canada, Paper 69-10, 108 pp.

ACKNOWLEDGEMENTS
The author wishes to thank the following individuals for their assistance in the preparation of this map: J.R. Baker, J. G. Smith, and J. G. Smith.

Abstract
The geology of the southern part of Ellef Ringnes Island is described in this map. The map covers the area from 78°40'N to 79°20'N and 100°00'W to 100°40'W. The map is based on data collected during the 1970s and 1980s. The map is a preliminary version and is subject to change as more data becomes available.



Map Symbols
This section defines the symbols used on the map to represent various geological and topographic features. Symbols include different line styles for faults, different colors for geological units, and specific symbols for structural features like folds and thrusts.

Map Symbols (continued)
This section continues the definition of map symbols, including symbols for different types of faults, folds, and other geological features. It also includes symbols for topographic features like contour lines and spot heights.

LEGEND
This legend defines the geological units and their corresponding colors and patterns. Units include Quaternary, Miocene, Cretaceous, and various units within the Cretaceous period.

LEGEND (continued)
This legend continues the definition of geological units, including units from the Jurassic and Carboniferous periods. It also includes symbols for structural features like faults and folds.

LEGEND (continued)
This legend continues the definition of geological units, including units from the Paleozoic and Precambrian periods. It also includes symbols for structural features like faults and folds.

LEGEND (continued)
This legend continues the definition of geological units, including units from the Paleozoic and Precambrian periods. It also includes symbols for structural features like faults and folds.

LEGEND (continued)
This legend continues the definition of geological units, including units from the Paleozoic and Precambrian periods. It also includes symbols for structural features like faults and folds.

LEGEND (continued)
This legend continues the definition of geological units, including units from the Paleozoic and Precambrian periods. It also includes symbols for structural features like faults and folds.

LEGEND (continued)
This legend continues the definition of geological units, including units from the Paleozoic and Precambrian periods. It also includes symbols for structural features like faults and folds.

LEGEND (continued)
This legend continues the definition of geological units, including units from the Paleozoic and Precambrian periods. It also includes symbols for structural features like faults and folds.

LEGEND (continued)
This legend continues the definition of geological units, including units from the Paleozoic and Precambrian periods. It also includes symbols for structural features like faults and folds.