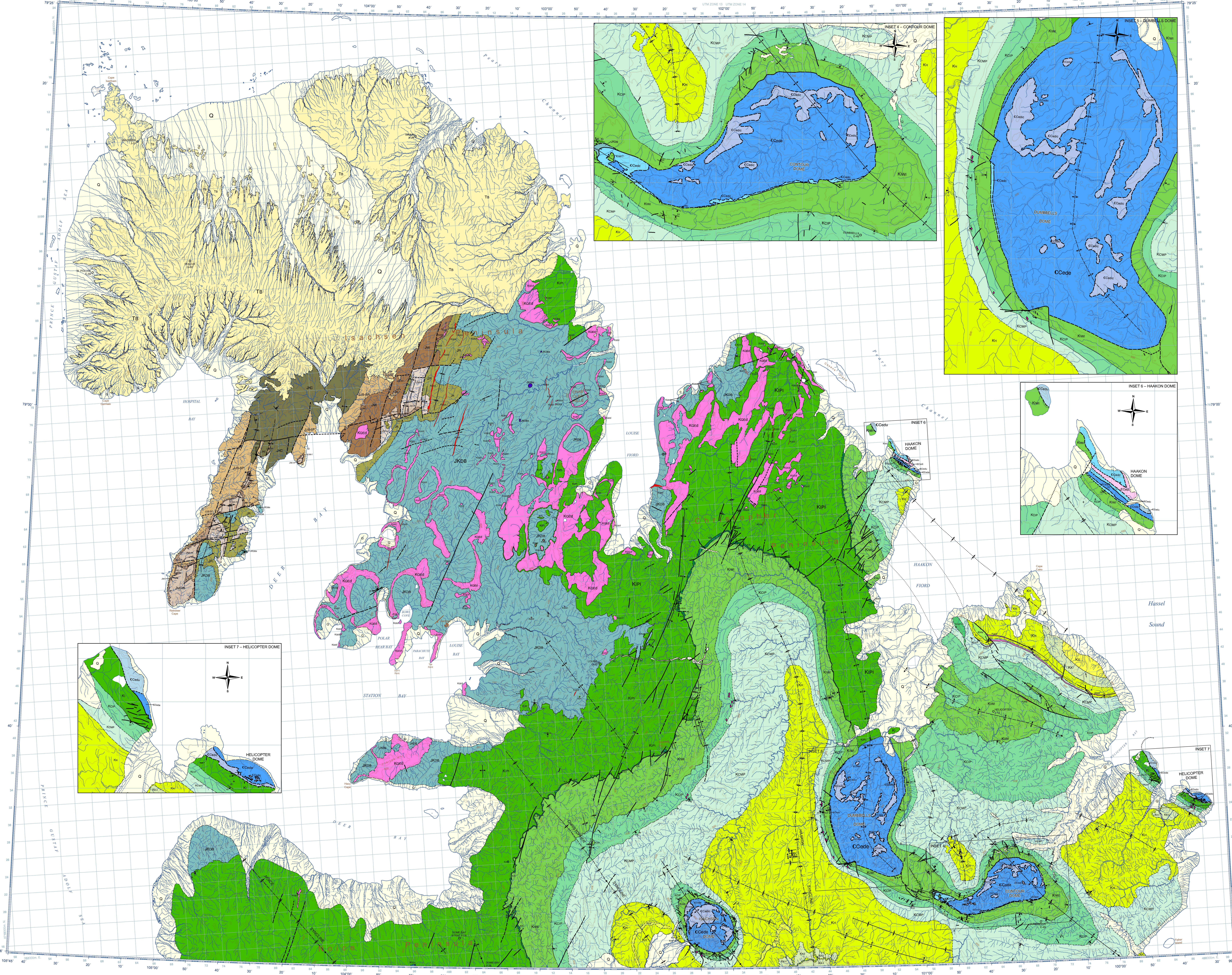


INTRODUCTION
DESCRIPTIONS
GENERAL GEOLOGY
REFERENCES
ACKNOWLEDGEMENTS
Abstract



QUATERNARY
NEOGENE
TERTIARY
UPPER CRETACEOUS
LOWER CRETACEOUS
JURASSIC AND CRETACEOUS
UPPER JURASSIC
LOWER AND MIDDLE JURASSIC
CARBONIFEROUS TO CENOZOIC
CRETACEOUS
INTRUSIVE ROCKS

CANADIAN GEOSCIENCE MAP 86
GEOLOGY
ELLEF RINGNES ISLAND NORTH
Nunavut
1:125 000
Natural Resources Canada
Resources naturelles du Canada