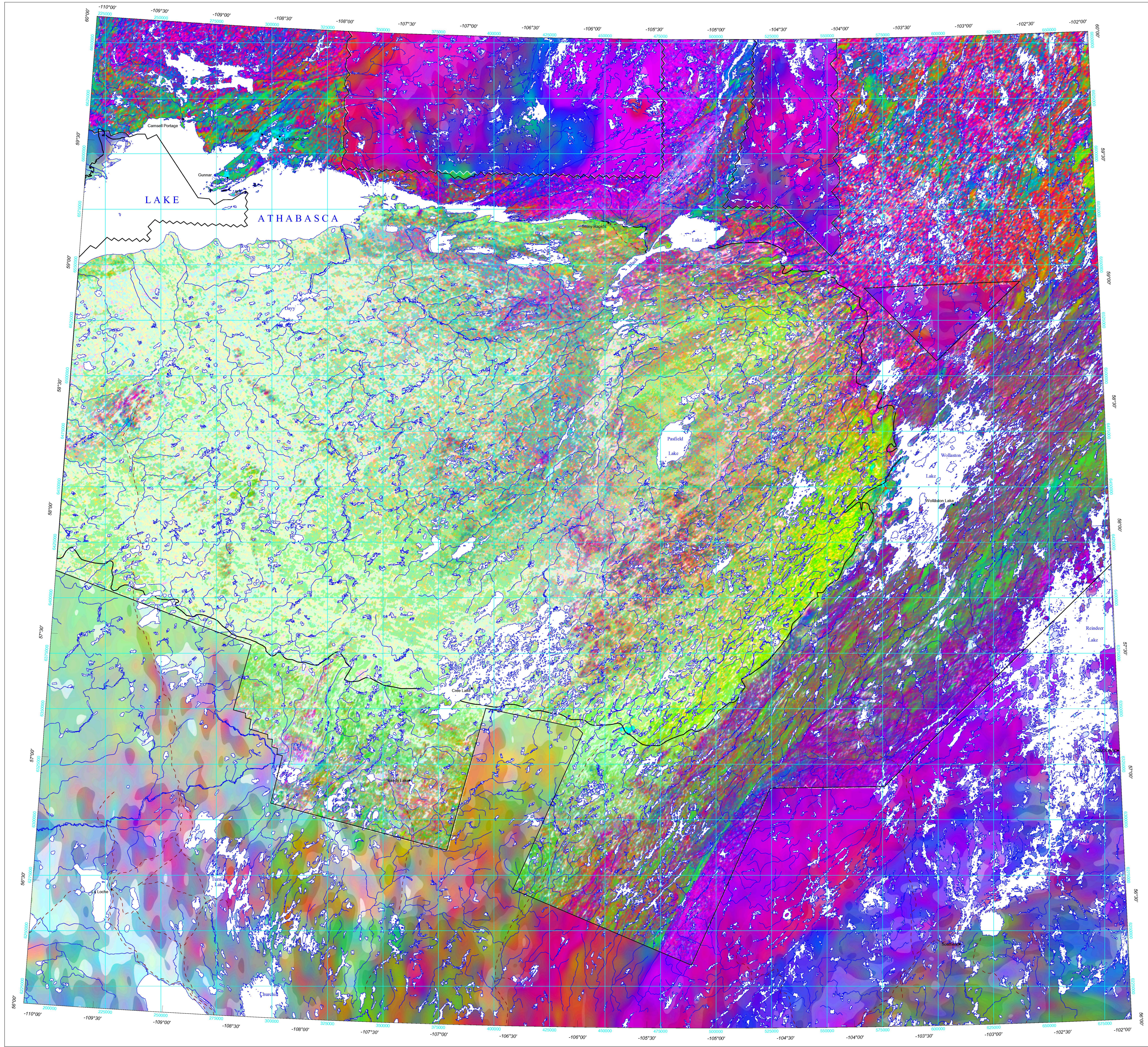


GEOPHYSICAL SERIES / TERNARY RADIOELEMENT MAP

SÉRIE DES CARTES GÉOPHYSIQUES / DIAGRAMME TERNAIRE DES RADIOÉLÉMENTS

GEOLOGICAL SURVEY OF CANADA / COMMISSION GÉOLOGIQUE DU CANADA



This geophysical map of the Athabasca Basin Region is one of a set of ten 1:750 000 regional compilation maps that include four measured variables potassium (K), equivalent uranium (eU), equivalent thorium (eTh) and the total magnetic field, and six derived products... The derived products include the natural radioisotope dose rate calculated from a linear combination of K, eU and eTh, the ratios eU/Th, eU/K and eTh/K, the ternary radioelement map, (Broom et al., 1987) and the first vertical derivative of the magnetic field (Lynch et al., 1997)...

References / Références bibliographiques
Broom, J., Carson, J.M., Ford, J.A. and Ford, K.L. (1987) A modified ternary radioelement mapping technique and its application to the South Coast of Newfoundland; Geological Survey of Canada, Paper 87-14.
Carson, J.M., Holman, P.B., Ford, K.L., Grant, J.A. and Shives, R.B.K. (2002a) Airborne Gamma Ray Spectrometry Compilation Series, Lake Athabasca, Alberta - Saskatchewan; Geological Survey of Canada, Open File 4292, scale 1:1 000 000.

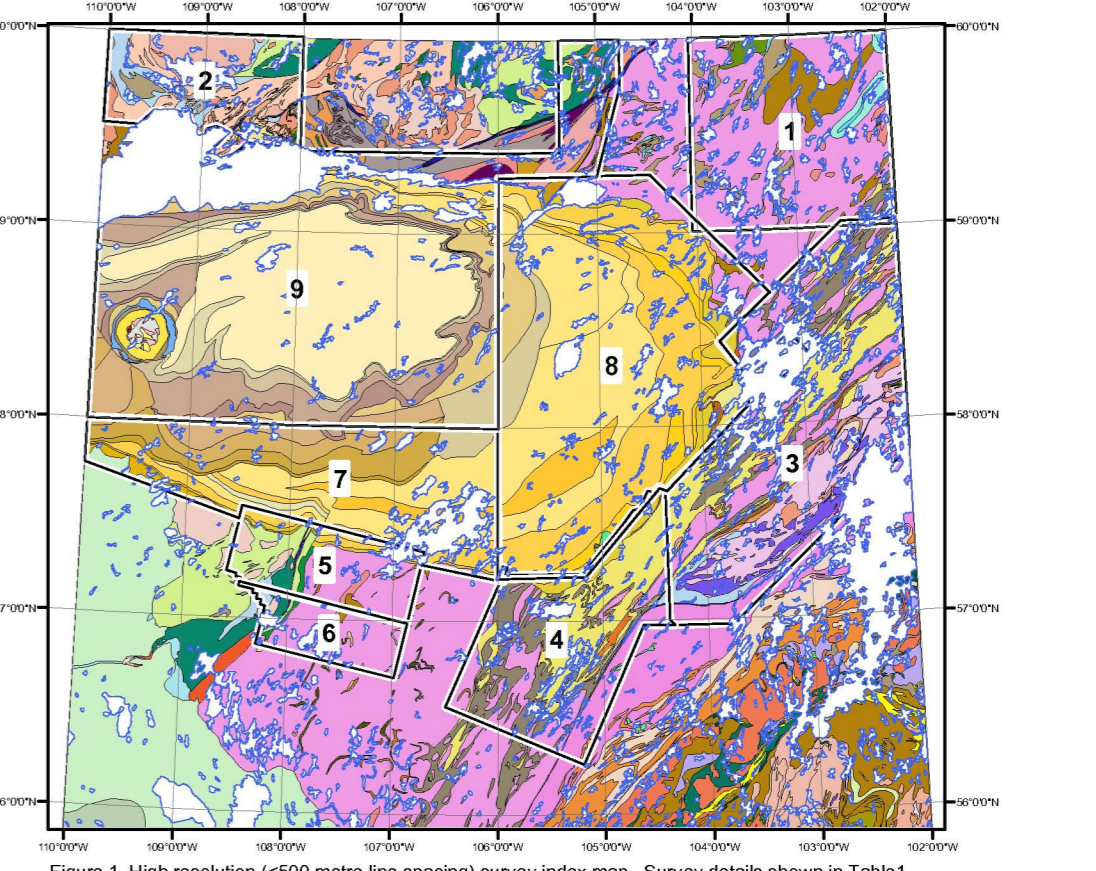


Table 1. List of high resolution (4500 metre line spacing) survey index. Table 1. Levés à haute résolution (espacement des lignes de vol <500m).

Survey Number	Survey Name	Year Published	Line Spacing	Flown By
1	Phase 1 Lake Athabasca	2001	1000/500	Sander Geophysical Ltd
2	Phase 2 Lake Athabasca	2001	400	Sander Geophysical Ltd
3	Phase 3 Lake Athabasca	2005	400	Fargo Airborne Surveys
4	Upper Foster Lake	2008	400	Fargo Airborne Surveys
5	Clear Lake	2007	400	Sander Geophysical Ltd
6	Clear Lake South	2008	400	Sander Geophysical Ltd
7	Southern Athabasca Basin	2008	400	Fargo Airborne Surveys
8	Eastern Athabasca Basin	2010	400	Goldisk Airborne Surveys
9	Northwestern Athabasca Basin	2011	400	Goldisk Airborne Surveys

The acquisition of the geophysical data and production of these compilation maps were funded by the Saskatchewan Ministry of Industry and Resources and the GEM-Energy Program of the Earth Sciences Sector, Natural Resources Canada.

Auteurs : Buckle, J.L., Carson, J.M., Miles, W.F., Ford, K.L., Fortin, R. et Delaney, G.

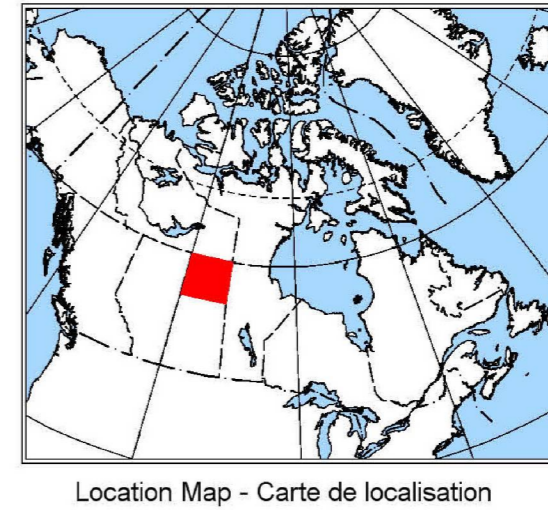
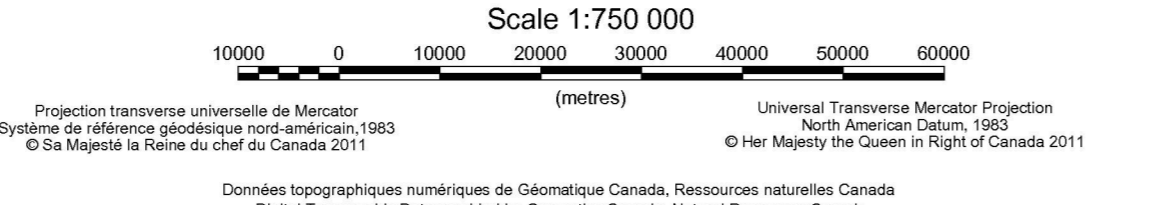
GSC OPEN FILE 7039 / DOSSIER PUBLIC 7039 DE LA CGC / SMER OPEN FILE 58

GEOPHYSICAL SERIES / SÉRIE DES CARTES GÉOPHYSIQUES
GEOLOGICAL SURVEY OF CANADA / COMMISSION GÉOLOGIQUE DU CANADA
GEOPHYSICAL COMPILATION NORTHERN SASKATCHEWAN
COMPILATION GÉOPHYSIQUE, NORD DE LA SASKATCHEWAN
TERNARY RADIOELEMENT MAP
DIAGRAMME TERNAIRE DES RADIOÉLÉMENTS

Auteurs : Buckle, J.L., Carson, J.M., Miles, W.F., Ford, K.L., Fortin, R. et Delaney, G.

Digital version of this map and corresponding digital profile and grid data can be downloaded at no charge from Natural Resources Canada's Data Repository at <http://www.nrcregistry.ca>. The same products are available for a fee from the Geophysical Data Centre, Geological Survey of Canada, 415 Booth Street, Ottawa, Ontario, K1A 0S8. Telephone: (613) 993-9300, email: geodata@nrc.ca

Une version numérique gratuite de cette carte ainsi que les données géophysiques de base et les données géométriques de la grille peuvent être téléchargées sans frais de la base de données géophysiques de la Commission géologique du Canada, 415 rue Booth, Ottawa (Ontario) K1A 0S8. Téléphone : (613) 993-9300, courriel : geodata@nrc.ca



Recommended citation: Buckle, J.L., Carson, J.M., Miles, W.F., Ford, K.L., Fortin, R. and Delaney, G., 2011. Geophysical Series, Geophysical Compilation Northern Saskatchewan. Saskatchewan Ministry of Energy and Resources, Open File 2011-58. 106p. 1:750 000.