

OPEN FILE 7016
BACKSCATTER STRENGTH AND SHADED SEAFLOOR RELIEF
BAY OF FUNDY, SHEET 9
 OFFSHORE NOVA SCOTIA-NEW BRUNSWICK

Scale 1:50 000 / Échelle 1:50 000

Authors: B.J. Todd, J. Shaw, D.R. Parsons, J.E. Hughes Clarke, D. Cartwright, and S.E. Hayward

This map was produced by Natural Resources Canada in co-operation with Fisheries and Oceans Canada

Multibeam backscatter data collected by Canadian Hydrographic Service, 1993-2009; Geological Survey of Canada, 1999-2003, 2006-2009 and University of New Brunswick, 1993, 1994, 2002-2009

Multibeam backscatter data compiled by Canadian Hydrographic Service, Geological Survey of Canada, and University of New Brunswick, 1993-2010

Digital bathymetry by P.A. McGeorge and P. Offenberg, Data Dissemination Division (DDO) and G. Grant, S.E. Hayward and E. Fenton, GIS (Atlantic)

Projection: Transverse Mercator, North American Datum 1983
 System: an offshore geodetic coordinate system
 2 m map scale is the datum of Canada, 2011
 This map is not to be used for navigational purposes

Any revision or additional geographic information known to the user would be accepted by the Geological Survey of Canada

Digital base map (land area) from data compiled by Geomatics Canada, modified by GSC (Atlantic)

Digital bathymetric contours in metres supplied by Canadian Hydrographic Service and GSC (Atlantic)

Mapsheet declination 2011, 17.55'K decreasing 7.5' annually

Elevations in metres above mean sea level

Depth in metres below mean sea level

Scale 1:50 000 / Échelle 1:50 000

Map grid showing UTM coordinates (21Q, 21R, 21S, 21T, 21U, 21V, 21W, 21X, 21Y, 21Z) and (10, 11, 12, 13, 14, 15, 16, 17, 18, 19, 20, 21, 22, 23, 24, 25, 26, 27, 28, 29, 30, 31, 32)

INTRODUCTION

The bathymetry of the Bay of Fundy... The backscatter data are presented in a grid of 100 m cells...

MULTIBEAM SONAR SURVEYS

The University of New Brunswick, the Canadian Hydrographic Service, and the Geological Survey of Canada conducted Bay of Fundy multibeam sonar surveys from 1993 to 2009...

ACKNOWLEDGMENTS

B. MacGowan, M. Lamplugh and J. Griffin of the Canadian Hydrographic Service (CHS) organized the multibeam sonar surveys of the Bay of Fundy and adjacent coast...

REFERENCES

Arnott, C.L., Buckley, D.E., Dalton, D.R., Darviche, R.W., McCann, S.B., and Rie, M., 1980. Oceanographic and sedimentary characteristics of the Bay of Fundy, Geological Association of Canada, Field Trip Guidebook No. 8/82.

DESCRIPTIVE NOTES

The backscatter data are presented in a grid of 100 m cells... The backscatter strength is expressed in dB...

BACKSCATTER DISTRIBUTION

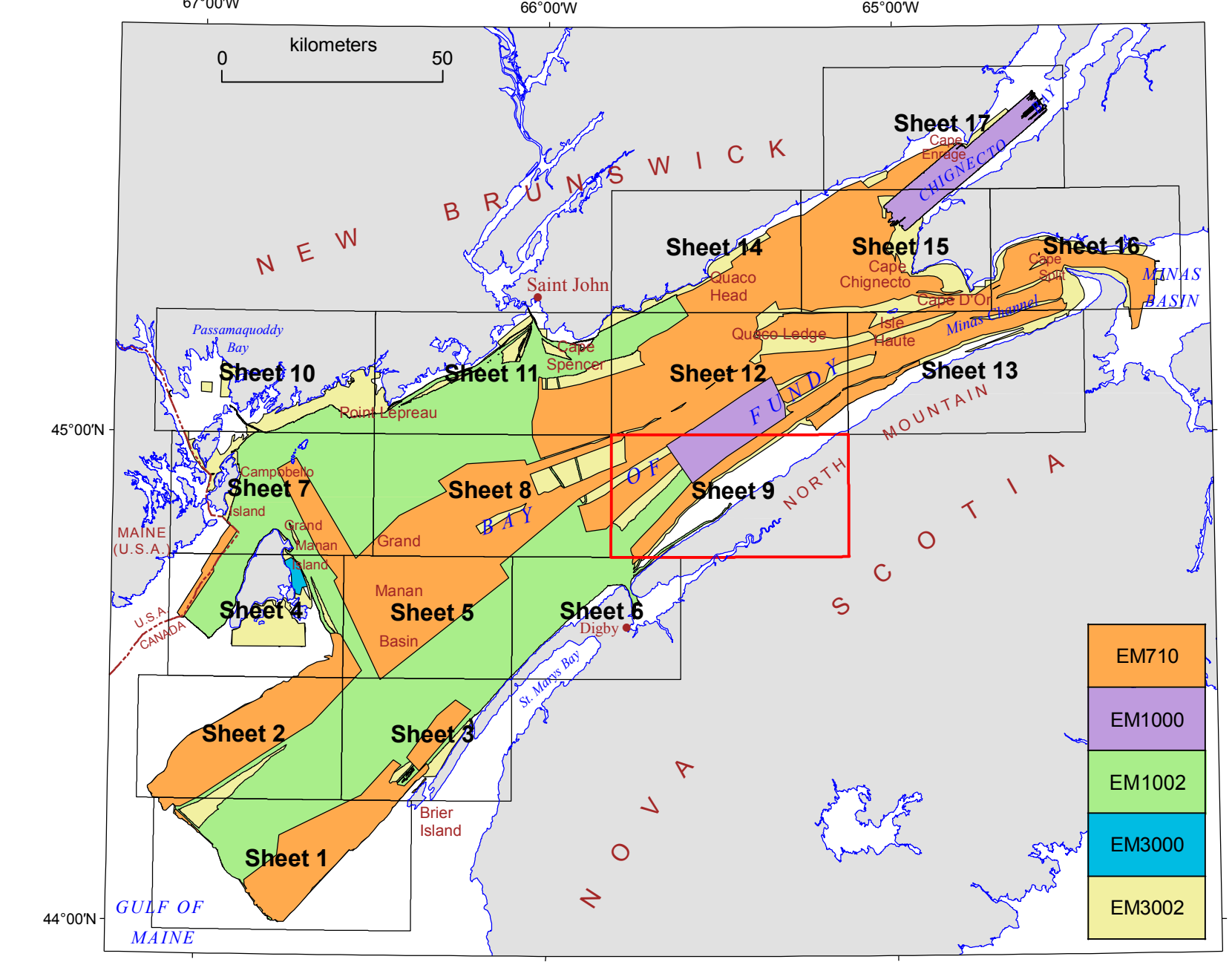
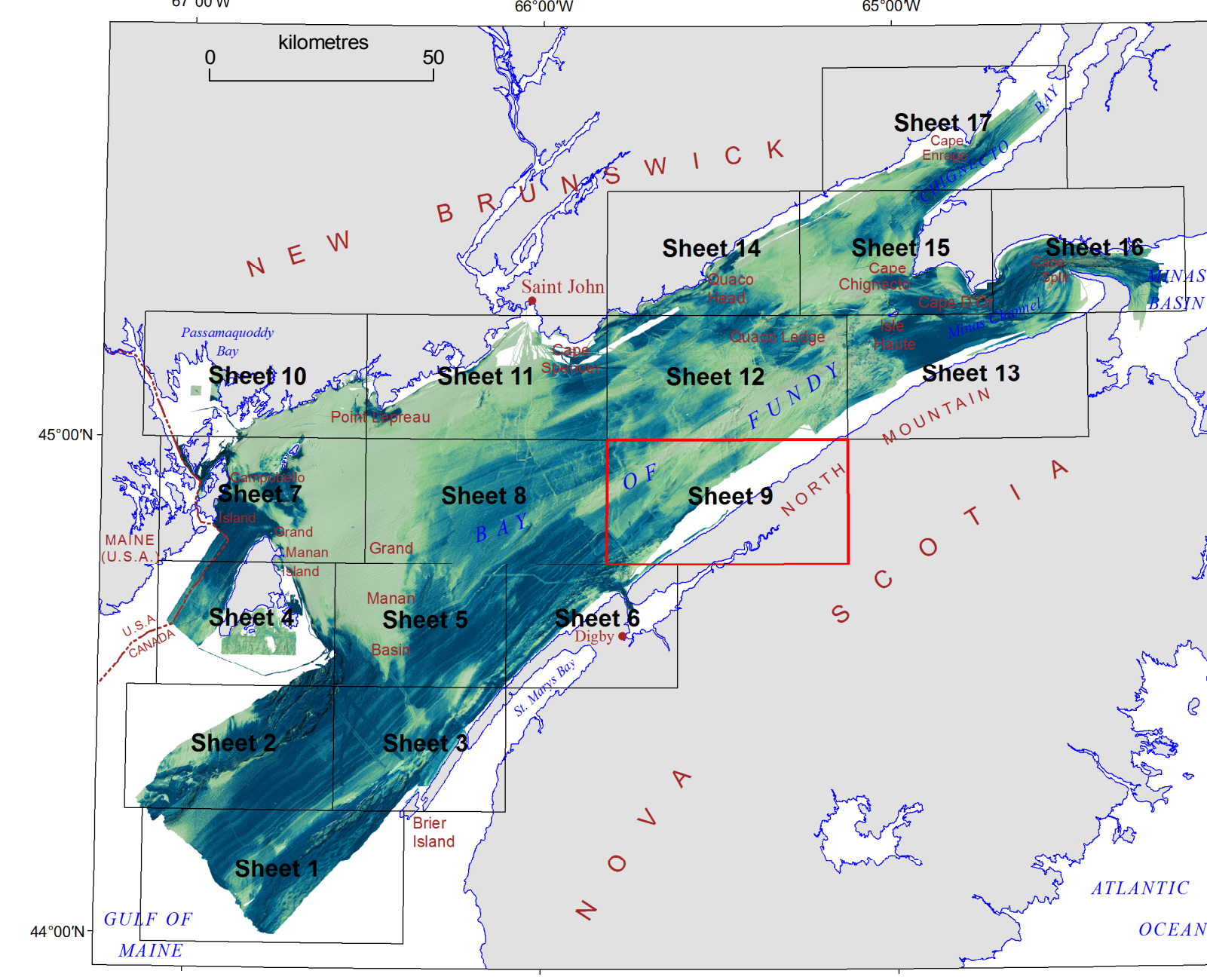
The backscatter data are presented in a grid of 100 m cells... The backscatter strength is expressed in dB...

ACKNOWLEDGMENTS

B. MacGowan, M. Lamplugh and J. Griffin of the Canadian Hydrographic Service (CHS) organized the multibeam sonar surveys of the Bay of Fundy and adjacent coast...

REFERENCES

Arnott, C.L., Buckley, D.E., Dalton, D.R., Darviche, R.W., McCann, S.B., and Rie, M., 1980. Oceanographic and sedimentary characteristics of the Bay of Fundy, Geological Association of Canada, Field Trip Guidebook No. 8/82.



OPEN FILE 7016
BACKSCATTER STRENGTH AND SHADED SEAFLOOR RELIEF
BAY OF FUNDY, SHEET 9
 OFFSHORE NOVA SCOTIA-NEW BRUNSWICK

Scale 1:50 000 / Échelle 1:50 000

Authors: B.J. Todd, J. Shaw, D.R. Parsons, J.E. Hughes Clarke, D. Cartwright, and S.E. Hayward

This map was produced by Natural Resources Canada in co-operation with Fisheries and Oceans Canada

Multibeam backscatter data collected by Canadian Hydrographic Service, 1993-2009; Geological Survey of Canada, 1999-2003, 2006-2009 and University of New Brunswick, 1993, 1994, 2002-2009

Multibeam backscatter data compiled by Canadian Hydrographic Service, Geological Survey of Canada, and University of New Brunswick, 1993-2010

Digital bathymetry by P.A. McGeorge and P. Offenberg, Data Dissemination Division (DDO) and G. Grant, S.E. Hayward and E. Fenton, GIS (Atlantic)

Projection: Transverse Mercator, North American Datum 1983
 System: an offshore geodetic coordinate system
 2 m map scale is the datum of Canada, 2011
 This map is not to be used for navigational purposes

Any revision or additional geographic information known to the user would be accepted by the Geological Survey of Canada

Digital base map (land area) from data compiled by Geomatics Canada, modified by GSC (Atlantic)

Digital bathymetric contours in metres supplied by Canadian Hydrographic Service and GSC (Atlantic)

Mapsheet declination 2011, 17.55'K decreasing 7.5' annually

Elevations in metres above mean sea level

Depth in metres below mean sea level

Scale 1:50 000 / Échelle 1:50 000

Map grid showing UTM coordinates (21Q, 21R, 21S, 21T, 21U, 21V, 21W, 21X, 21Y, 21Z) and (10, 11, 12, 13, 14, 15, 16, 17, 18, 19, 20, 21, 22, 23, 24, 25, 26, 27, 28, 29, 30, 31, 32)

OPEN FILE 7016
 BACKSCATTER STRENGTH AND SHADED SEAFLOOR RELIEF
 BAY OF FUNDY, SHEET 9
 OFFSHORE NOVA SCOTIA-NEW BRUNSWICK

Scale 1:50 000 / Échelle 1:50 000

Authors: B.J. Todd, J. Shaw, D.R. Parsons, J.E. Hughes Clarke, D. Cartwright, and S.E. Hayward

This map was produced by Natural Resources Canada in co-operation with Fisheries and Oceans Canada

Multibeam backscatter data collected by Canadian Hydrographic Service, 1993-2009; Geological Survey of Canada, 1999-2003, 2006-2009 and University of New Brunswick, 1993, 1994, 2002-2009

Multibeam backscatter data compiled by Canadian Hydrographic Service, Geological Survey of Canada, and University of New Brunswick, 1993-2010

Digital bathymetry by P.A. McGeorge and P. Offenberg, Data Dissemination Division (DDO) and G. Grant, S.E. Hayward and E. Fenton, GIS (Atlantic)

Projection: Transverse Mercator, North American Datum 1983
 System: an offshore geodetic coordinate system
 2 m map scale is the datum of Canada, 2011
 This map is not to be used for navigational purposes

Any revision or additional geographic information known to the user would be accepted by the Geological Survey of Canada

Digital base map (land area) from data compiled by Geomatics Canada, modified by GSC (Atlantic)

Digital bathymetric contours in metres supplied by Canadian Hydrographic Service and GSC (Atlantic)

Mapsheet declination 2011, 17.55'K decreasing 7.5' annually

Elevations in metres above mean sea level

Depth in metres below mean sea level

Scale 1:50 000 / Échelle 1:50 000

Map grid showing UTM coordinates (21Q, 21R, 21S, 21T, 21U, 21V, 21W, 21X, 21Y, 21Z) and (10, 11, 12, 13, 14, 15, 16, 17, 18, 19, 20, 21, 22, 23, 24, 25, 26, 27, 28, 29, 30, 31, 32)