

NOTES DESCRIPTIVES

INTRODUCTION
La carte de Sault-au-Mouton fait partie d'une série de 12 cartes de bathymétrie multibeam qui...

ACQUISITION DES DONNÉES DE BATHYMÉTRIE MULTIBEAUX
Les données de bathymétrie multibeam ont été acquises principalement en 2006 par le Service...

PRÉSENTATION DES DONNÉES DE BATHYMÉTRIE MULTIBEAUX
Les données de bathymétrie multibeam ont été acquises principalement en 2006 par le Service...

GÉOMORPHOLOGIE RÉGIONALE
L'estuaire du Sault-au-Mouton est une vallée en agée occupée par une masse d'eau salée subsistant...

REMERCIEMENTS
Nous remercions les officiers et techniciens du NCCO/Fredrick G. Crowl ainsi que le personnel du...

DESCRIPTIVE NOTES

INTRODUCTION
The Sault-au-Mouton map is part of a 12 map series for the St. Lawrence River estuary that form a...

MULTIBEAMBATHYMETRY DATA COLLECTION
Multibeam bathymetry data were mainly collected in 2006 by the Canadian Hydrographic Service...

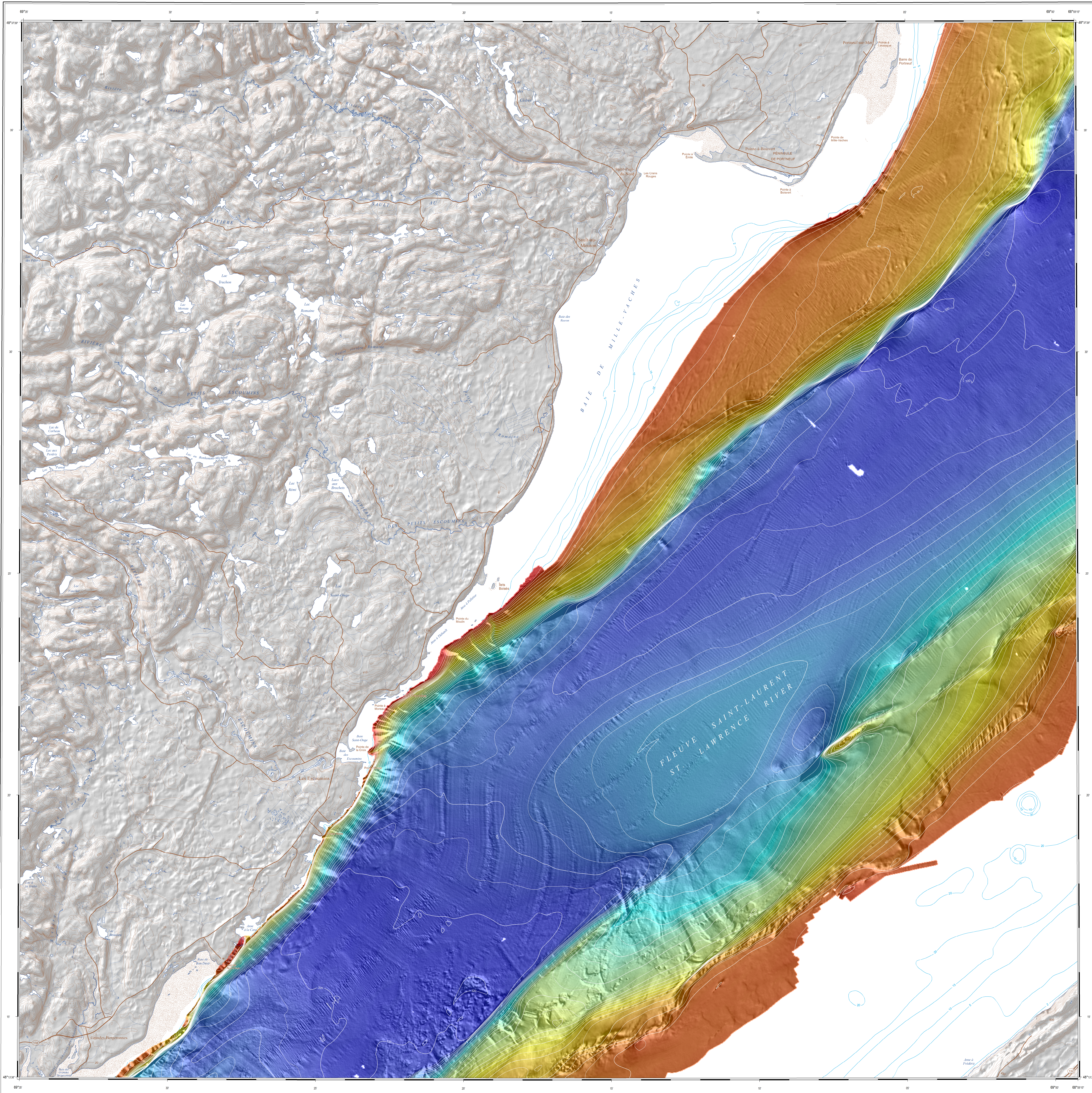
MULTIBEAMBATHYMETRY DATA DISPLAY
Multibeam bathymetry data shown on this map have been gridded at 10 m horizontal resolution. The...

REGIONAL GEOMORPHOLOGY
The St. Lawrence River estuary is a funnel-shaped body of tide-influenced salt water that increases...

ACKNOWLEDGMENTS
The authors thank the officers and crew of the CCGS/Fredrick G. Crowl as well as the personnel of the...

REFERENCES/RÉFÉRENCES

Notes, A., 2008. Répertoire 2007-08 du NCCO/Maritime. Livre géologique régional, estuaire du Sault-au-Mouton...



NOTES À PROPOS DE LA CARTE, SAULT-AU-MOUTON

La carte de Sault-au-Mouton couvre le chenal Laurentides et les marges nord-ouest et sud-est de celui-ci...

ACQUISITION DES DONNÉES DE BATHYMÉTRIE MULTIBEAUX
Les données de bathymétrie multibeam ont été acquises principalement en 2006 par le Service...

PRÉSENTATION DES DONNÉES DE BATHYMÉTRIE MULTIBEAUX
Les données de bathymétrie multibeam ont été acquises principalement en 2006 par le Service...

GÉOMORPHOLOGIE RÉGIONALE
L'estuaire du Sault-au-Mouton est une vallée en agée occupée par une masse d'eau salée subsistant...

REMERCIEMENTS
Nous remercions les officiers et techniciens du NCCO/Fredrick G. Crowl ainsi que le personnel du...

MAP NOTES, SAULT-AU-MOUTON

The Sault-au-Mouton map covers the Laurentian Channel and its northwest and southeast margins...

MULTIBEAMBATHYMETRY DATA COLLECTION
Multibeam bathymetry data were mainly collected in 2006 by the Canadian Hydrographic Service...

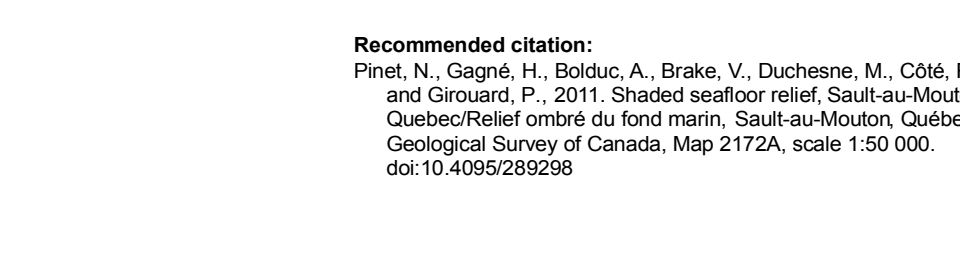
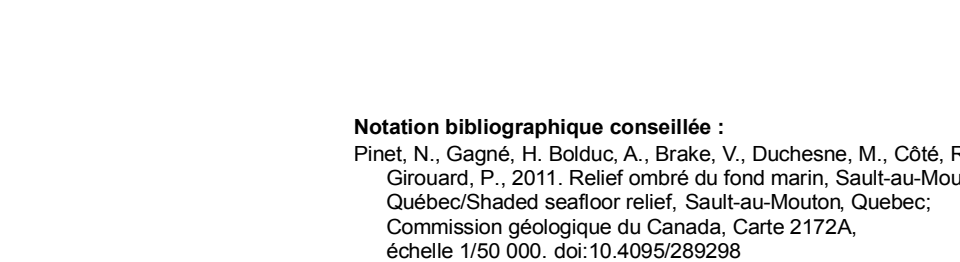
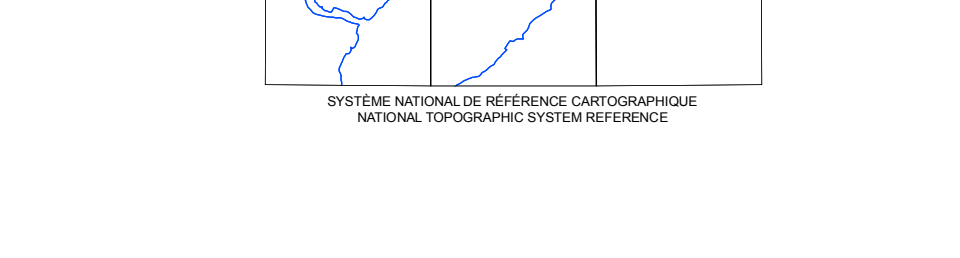
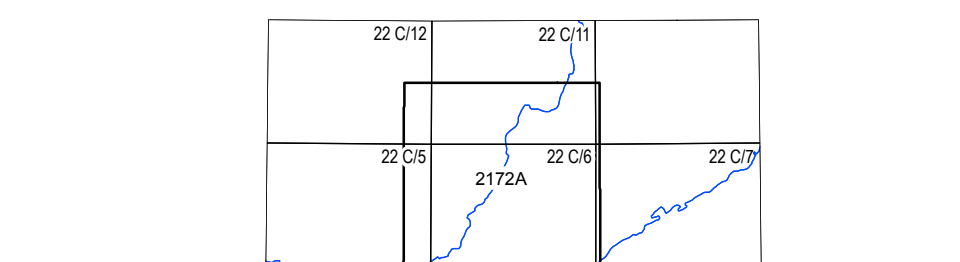
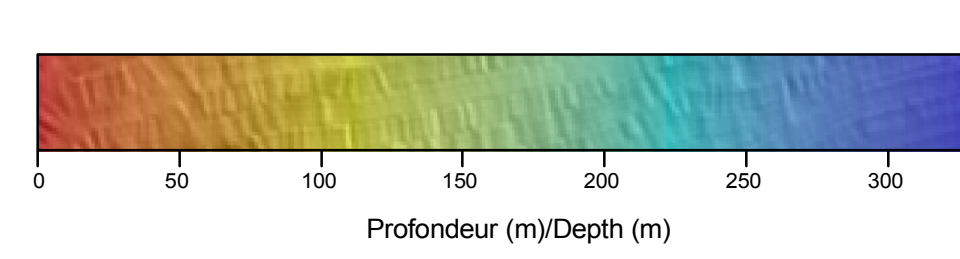
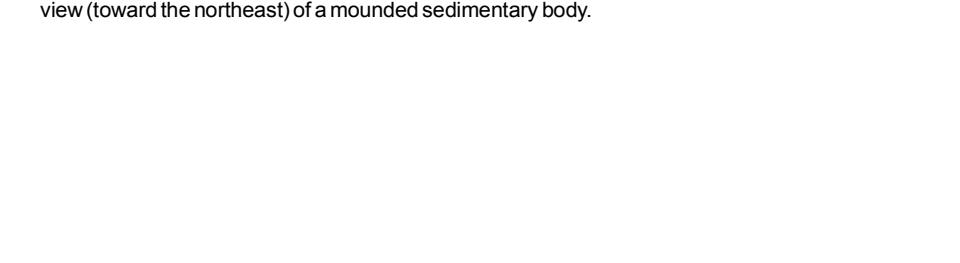
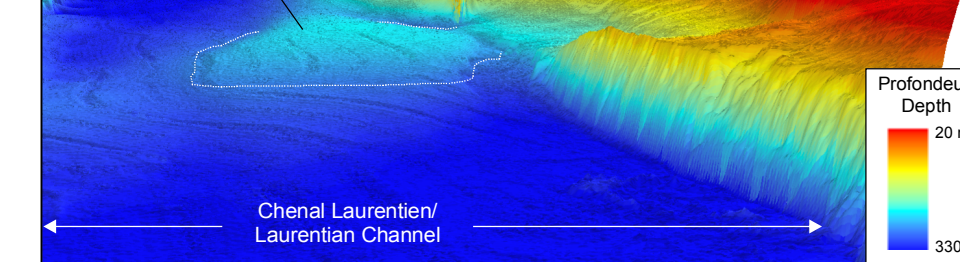
MULTIBEAMBATHYMETRY DATA DISPLAY
Multibeam bathymetry data shown on this map have been gridded at 10 m horizontal resolution. The...

REGIONAL GEOMORPHOLOGY
The St. Lawrence River estuary is a funnel-shaped body of tide-influenced salt water that increases...

ACKNOWLEDGMENTS
The authors thank the officers and crew of the CCGS/Fredrick G. Crowl as well as the personnel of the...

REFERENCES/RÉFÉRENCES

Notes, A., 2008. Répertoire 2007-08 du NCCO/Maritime. Livre géologique régional, estuaire du Sault-au-Mouton...



CARTEMAP 2172A
RELIEF OMBRÉ DU FOND MARIN/SHADED SEAFLOOR RELIEF
SAULT-AU-MOUTON
QUÉBEC/QUEBEC

This map was produced by Natural Resources Canada in co-operation with Fisheries and Oceans Canada.

Multibeam bathymetric data collected by Canadian Hydrographic Service and Geological Survey of Canada, 1997-2007.

Depth in metres below sea level.

CarteMAP 2172A
RELIEF OMBRÉ DU FOND MARIN/SHADED SEAFLOOR RELIEF
SAULT-AU-MOUTON
QUÉBEC/QUEBEC

This map was produced by Natural Resources Canada in co-operation with Fisheries and Oceans Canada.

Multibeam bathymetric data collected by Canadian Hydrographic Service and Geological Survey of Canada, 1997-2007.

Depth in metres below sea level.

CarteMAP 2172A
RELIEF OMBRÉ DU FOND MARIN/SHADED SEAFLOOR RELIEF
SAULT-AU-MOUTON
QUÉBEC/QUEBEC

CarteMAP 2172A
RELIEF OMBRÉ DU FOND MARIN/SHADED SEAFLOOR RELIEF
SAULT-AU-MOUTON
QUÉBEC/QUEBEC

CarteMAP 2172A
RELIEF OMBRÉ DU FOND MARIN/SHADED SEAFLOOR RELIEF
SAULT-AU-MOUTON
QUÉBEC/QUEBEC

This map was produced by Natural Resources Canada in co-operation with Fisheries and Oceans Canada.

Multibeam bathymetric data collected by Canadian Hydrographic Service and Geological Survey of Canada, 1997-2007.

Depth in metres below sea level.

CarteMAP 2172A
RELIEF OMBRÉ DU FOND MARIN/SHADED SEAFLOOR RELIEF
SAULT-AU-MOUTON
QUÉBEC/QUEBEC

CarteMAP 2172A
RELIEF OMBRÉ DU FOND MARIN/SHADED SEAFLOOR RELIEF
SAULT-AU-MOUTON
QUÉBEC/QUEBEC

CarteMAP 2172A
RELIEF OMBRÉ DU FOND MARIN/SHADED SEAFLOOR RELIEF
SAULT-AU-MOUTON
QUÉBEC/QUEBEC

This map was produced by Natural Resources Canada in co-operation with Fisheries and Oceans Canada.

Multibeam bathymetric data collected by Canadian Hydrographic Service and Geological Survey of Canada, 1997-2007.

Depth in metres below sea level.

CarteMAP 2172A
RELIEF OMBRÉ DU FOND MARIN/SHADED SEAFLOOR RELIEF
SAULT-AU-MOUTON
QUÉBEC/QUEBEC

CarteMAP 2172A
RELIEF OMBRÉ DU FOND MARIN/SHADED SEAFLOOR RELIEF
SAULT-AU-MOUTON
QUÉBEC/QUEBEC

