

NOTES DESCRIPTIVES

INTRODUCTION
La carte de Baie-Sainte-Catherine fait partie d'une série de 12 cartes de bathymétrie multifaisceaux qui forment une couverture complète pour des profondeurs supérieures à 30 m, entre l'île aux Coudres et l'estuaire de Pointe-des-Monts, au nord.

ACQUISITION DES DONNÉES DE BATHYMÉTRIE MULTIFAISCEAUX
Les données de bathymétrie multifaisceaux ont été acquises entre 1997 et 2007 par le Service hydrographique du Canada à bord du navire de la Commission canadienne (CCGS) Frederick G. Cowell. Ce système optique de faisceaux à un large éventail de longueurs d'onde de 2,3 à 1000 nm.

PRÉSENTATION DES DONNÉES DE BATHYMÉTRIE MULTIFAISCEAUX
Les données de bathymétrie multifaisceaux montrées sur cette carte offrent une résolution horizontale de 10 m. Les données ont été artificiellement étirées afin d'accentuer les traits géomorphologiques.

GÉOMORPHOLOGIE RÉGIONALE
L'estuaire du Saint-Laurent est une vallée en auge occupée par une masse d'eau salée subsistant dans les sédiments de la plaine alluviale. Le front marin est situé à l'est de l'île aux Coudres.

REMERCIEMENTS
Nous remercions les officiers et l'équipage du CCGS Frederick G. Cowell, ainsi que le personnel du Service hydrographique du Canada pour leur professionnalisme et leur soutien technique.

DESCRIPTIVE NOTES
The Baie-Sainte-Catherine map is part of a 12 map series for the St. Lawrence River estuary that form a complete bathymetry coverage for water depths greater than 30 m, between the Îles Coudres and the estuary area and Pointe-des-Monts downstream.

INTRODUCTION
The Baie-Sainte-Catherine map is part of a 12 map series for the St. Lawrence River estuary that form a complete bathymetry coverage for water depths greater than 30 m, between the Îles Coudres and the estuary area and Pointe-des-Monts downstream.

MULTIBEAM-BATHYMETRY DATA COLLECTION
Multibeam bathymetry data were collected between 1997 and 2007 by the Canadian Hydrographic Service using the Canadian Coast Guard (CCGS) Ship Frederick G. Cowell. During the 2002 and 2007 surveys, the ship was equipped with a Kongsberg EM1002 multibeam bathymetry system.

MULTIBEAM-BATHYMETRY DATA DISPLAY
Multibeam bathymetry data shown on this map have been gridded at 10 m horizontal resolution. The gridded data are artificially angled to accentuate geomorphologic features.

REGIONAL GEOMORPHOLOGY
The St. Lawrence River estuary is a funnel-shaped body of tide-influenced salt water that increases significantly in width toward the northeast. It is open to the Gulf of St. Lawrence and Atlantic Ocean through the Laurentian Channel, which is a long, continuous trough over 200 km long.

ACKNOWLEDGMENTS
The authors thank the officers and crew of the CCGS Frederick G. Cowell as well as the personnel of the Canadian Hydrographic Service for their professionalism and support.

REFERENCES/REFERENCES
Bostic, A., 2008. Exploiter 2007-048 du NGCC Matthew - Level géologique, estuaire du Saint-Laurent, 23 décembre 2007. Commission géologique du Canada, Dossier public 9806.02, p. 123-130.

Carte 2114, intitulée 1250000/1524, passage au large de l'estuaire du Saint-Laurent, Québec, Commission géologique du Canada, 1997-2007.

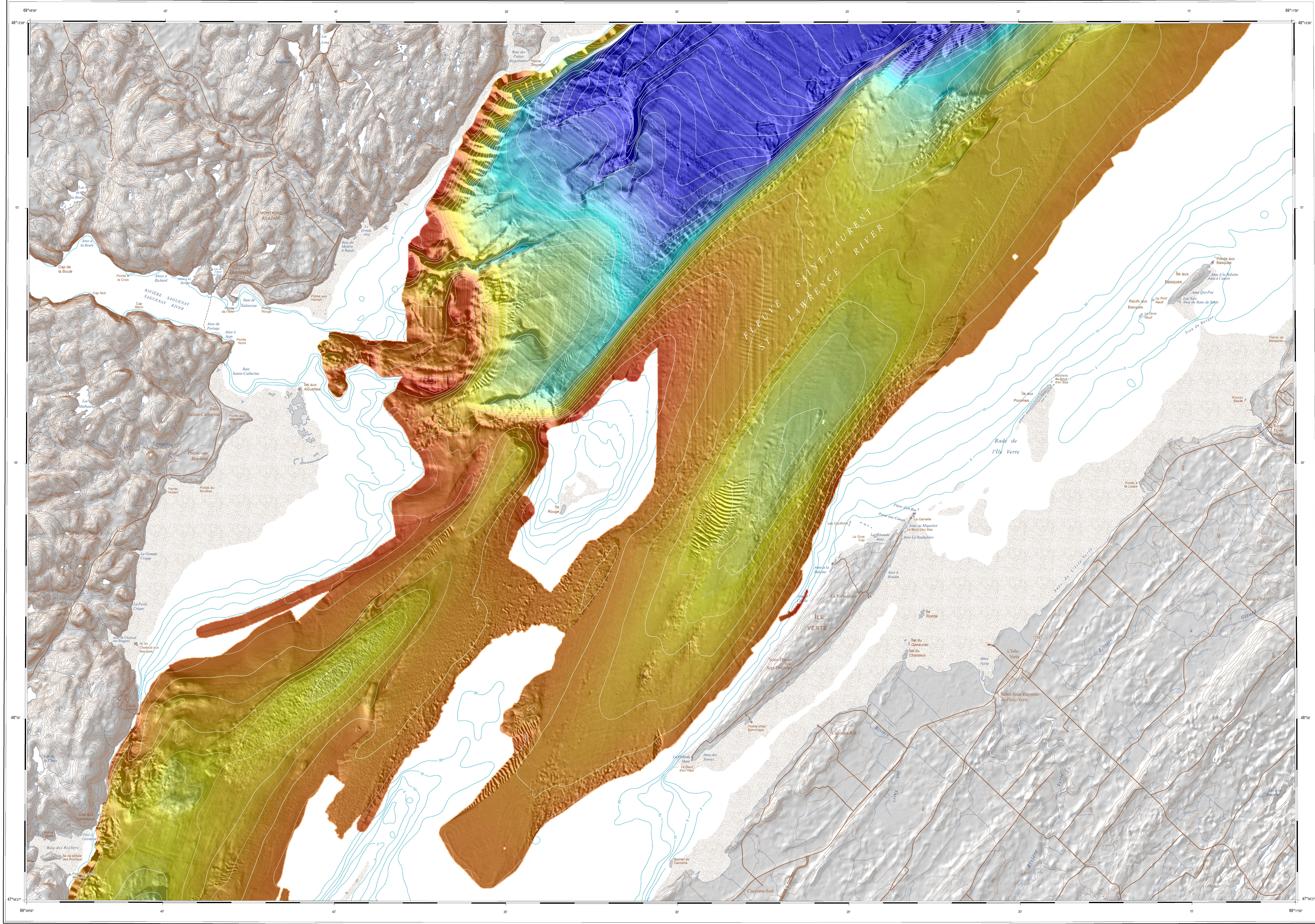
Carte 2114, intitulée 1250000/1524, passage au large de l'estuaire du Saint-Laurent, Québec, Commission géologique du Canada, 1997-2007.

Carte 2114, intitulée 1250000/1524, passage au large de l'estuaire du Saint-Laurent, Québec, Commission géologique du Canada, 1997-2007.

Carte 2114, intitulée 1250000/1524, passage au large de l'estuaire du Saint-Laurent, Québec, Commission géologique du Canada, 1997-2007.

Carte 2114, intitulée 1250000/1524, passage au large de l'estuaire du Saint-Laurent, Québec, Commission géologique du Canada, 1997-2007.

Carte 2114, intitulée 1250000/1524, passage au large de l'estuaire du Saint-Laurent, Québec, Commission géologique du Canada, 1997-2007.



CARTEMAP 2114A RELIEF OMBRÉ DU FOND MARIN/SHADED SEAFLOOR RELIEF

BAIE-SAINTE-CATHERINE QUÉBEC/QUEBEC

Echelle 1/50 000/Scale 1:50 000

Projections horizontales universelles de Mercator / Système géocentrique normal (NAD83) 1984

Déclinaison magnétique en 2011 : 17°55' W, diminuant de 7,6 par année

Altitudes au-dessus du niveau moyen de la mer exprimées en mètres (21 N14, 22 C) ou en pieds (21 N14, 22 C/3)

Profondeurs en mètres au-dessous du niveau moyen de la mer

Cartemaps 2114A, 2114B, 2114C, 2114D, 2114E, 2114F, 2114G, 2114H, 2114I, 2114J, 2114K, 2114L, 2114M, 2114N, 2114O, 2114P, 2114Q, 2114R, 2114S, 2114T, 2114U, 2114V, 2114W, 2114X, 2114Y, 2114Z

BAIE-SAINTE-CATHERINE QUÉBEC/QUEBEC

Echelle 1/50 000/Scale 1:50 000

Projections horizontales universelles de Mercator / Système géocentrique normal (NAD83) 1984

Déclinaison magnétique en 2011 : 17°55' W, diminuant de 7,6 par année

Altitudes au-dessus du niveau moyen de la mer exprimées en mètres (21 N14, 22 C) ou en pieds (21 N14, 22 C/3)

Profondeurs en mètres au-dessous du niveau moyen de la mer

Cartemaps 2114A, 2114B, 2114C, 2114D, 2114E, 2114F, 2114G, 2114H, 2114I, 2114J, 2114K, 2114L, 2114M, 2114N, 2114O, 2114P, 2114Q, 2114R, 2114S, 2114T, 2114U, 2114V, 2114W, 2114X, 2114Y, 2114Z

BAIE-SAINTE-CATHERINE QUÉBEC/QUEBEC

Echelle 1/50 000/Scale 1:50 000

Projections horizontales universelles de Mercator / Système géocentrique normal (NAD83) 1984

Déclinaison magnétique en 2011 : 17°55' W, diminuant de 7,6 par année

Altitudes au-dessus du niveau moyen de la mer exprimées en mètres (21 N14, 22 C) ou en pieds (21 N14, 22 C/3)

Profondeurs en mètres au-dessous du niveau moyen de la mer

Cartemaps 2114A, 2114B, 2114C, 2114D, 2114E, 2114F, 2114G, 2114H, 2114I, 2114J, 2114K, 2114L, 2114M, 2114N, 2114O, 2114P, 2114Q, 2114R, 2114S, 2114T, 2114U, 2114V, 2114W, 2114X, 2114Y, 2114Z

BAIE-SAINTE-CATHERINE QUÉBEC/QUEBEC

Echelle 1/50 000/Scale 1:50 000

Projections horizontales universelles de Mercator / Système géocentrique normal (NAD83) 1984

Déclinaison magnétique en 2011 : 17°55' W, diminuant de 7,6 par année

Altitudes au-dessus du niveau moyen de la mer exprimées en mètres (21 N14, 22 C) ou en pieds (21 N14, 22 C/3)

Profondeurs en mètres au-dessous du niveau moyen de la mer

NOTES À PROPOS DE LA CARTE, BAIE-SAINTE-CATHERINE

La carte de Baie-Sainte-Catherine occupe une position très particulière, dans la zone de transition entre l'estuaire méridien et l'estuaire moyen. Elle montre aussi une géologie unique des sédiments de surface, car les sédiments pré-Holocènes et de l'Holocène précèdent former la plus grande partie du fond marin (Fig. 1).

Dans la partie nord de la carte, le chenal Laurentien domine l'aspect morphologique principal. Il possède une largeur d'environ 7 km et une profondeur de 200 m. Des escarpements bathymétriques sont observés à l'est et à l'ouest du chenal. Les données bathymétriques indiquent que le chenal est un système de chenaux qui s'est développé à l'est et à l'ouest du chenal principal.

MAP NOTES, BAIE-SAINTE-CATHERINE
The Baie-Sainte-Catherine map lies at a very specific location at the transition zone between the Lower and Middle St. Lawrence River estuary. It also carries a unique surface geology as pre-Holocene to lower-Holocene sediments form most of the seafloor (Fig. 1).

In the northern part of the map, the Laurentian Channel dominates the main morphographic feature. It is about 7 km wide and up to 200 m deep. Bathymetric escarpments bound the channel on both sides. On the northern margin, the main escarpment is the north-south and west-east developed features.

MAP NOTES, BAIE-SAINTE-CATHERINE
The Baie-Sainte-Catherine map lies at a very specific location at the transition zone between the Lower and Middle St. Lawrence River estuary. It also carries a unique surface geology as pre-Holocene to lower-Holocene sediments form most of the seafloor (Fig. 1).

MAP NOTES, BAIE-SAINTE-CATHERINE
The Baie-Sainte-Catherine map lies at a very specific location at the transition zone between the Lower and Middle St. Lawrence River estuary. It also carries a unique surface geology as pre-Holocene to lower-Holocene sediments form most of the seafloor (Fig. 1).

MAP NOTES, BAIE-SAINTE-CATHERINE
The Baie-Sainte-Catherine map lies at a very specific location at the transition zone between the Lower and Middle St. Lawrence River estuary. It also carries a unique surface geology as pre-Holocene to lower-Holocene sediments form most of the seafloor (Fig. 1).

MAP NOTES, BAIE-SAINTE-CATHERINE
The Baie-Sainte-Catherine map lies at a very specific location at the transition zone between the Lower and Middle St. Lawrence River estuary. It also carries a unique surface geology as pre-Holocene to lower-Holocene sediments form most of the seafloor (Fig. 1).

MAP NOTES, BAIE-SAINTE-CATHERINE
The Baie-Sainte-Catherine map lies at a very specific location at the transition zone between the Lower and Middle St. Lawrence River estuary. It also carries a unique surface geology as pre-Holocene to lower-Holocene sediments form most of the seafloor (Fig. 1).

MAP NOTES, BAIE-SAINTE-CATHERINE
The Baie-Sainte-Catherine map lies at a very specific location at the transition zone between the Lower and Middle St. Lawrence River estuary. It also carries a unique surface geology as pre-Holocene to lower-Holocene sediments form most of the seafloor (Fig. 1).

MAP NOTES, BAIE-SAINTE-CATHERINE
The Baie-Sainte-Catherine map lies at a very specific location at the transition zone between the Lower and Middle St. Lawrence River estuary. It also carries a unique surface geology as pre-Holocene to lower-Holocene sediments form most of the seafloor (Fig. 1).

MAP NOTES, BAIE-SAINTE-CATHERINE
The Baie-Sainte-Catherine map lies at a very specific location at the transition zone between the Lower and Middle St. Lawrence River estuary. It also carries a unique surface geology as pre-Holocene to lower-Holocene sediments form most of the seafloor (Fig. 1).

MAP NOTES, BAIE-SAINTE-CATHERINE
The Baie-Sainte-Catherine map lies at a very specific location at the transition zone between the Lower and Middle St. Lawrence River estuary. It also carries a unique surface geology as pre-Holocene to lower-Holocene sediments form most of the seafloor (Fig. 1).

MAP NOTES, BAIE-SAINTE-CATHERINE
The Baie-Sainte-Catherine map lies at a very specific location at the transition zone between the Lower and Middle St. Lawrence River estuary. It also carries a unique surface geology as pre-Holocene to lower-Holocene sediments form most of the seafloor (Fig. 1).

MAP NOTES, BAIE-SAINTE-CATHERINE
The Baie-Sainte-Catherine map lies at a very specific location at the transition zone between the Lower and Middle St. Lawrence River estuary. It also carries a unique surface geology as pre-Holocene to lower-Holocene sediments form most of the seafloor (Fig. 1).

MAP NOTES, BAIE-SAINTE-CATHERINE
The Baie-Sainte-Catherine map lies at a very specific location at the transition zone between the Lower and Middle St. Lawrence River estuary. It also carries a unique surface geology as pre-Holocene to lower-Holocene sediments form most of the seafloor (Fig. 1).

MAP NOTES, BAIE-SAINTE-CATHERINE
The Baie-Sainte-Catherine map lies at a very specific location at the transition zone between the Lower and Middle St. Lawrence River estuary. It also carries a unique surface geology as pre-Holocene to lower-Holocene sediments form most of the seafloor (Fig. 1).

MAP NOTES, BAIE-SAINTE-CATHERINE
The Baie-Sainte-Catherine map lies at a very specific location at the transition zone between the Lower and Middle St. Lawrence River estuary. It also carries a unique surface geology as pre-Holocene to lower-Holocene sediments form most of the seafloor (Fig. 1).

MAP NOTES, BAIE-SAINTE-CATHERINE
The Baie-Sainte-Catherine map lies at a very specific location at the transition zone between the Lower and Middle St. Lawrence River estuary. It also carries a unique surface geology as pre-Holocene to lower-Holocene sediments form most of the seafloor (Fig. 1).

MAP NOTES, BAIE-SAINTE-CATHERINE
The Baie-Sainte-Catherine map lies at a very specific location at the transition zone between the Lower and Middle St. Lawrence River estuary. It also carries a unique surface geology as pre-Holocene to lower-Holocene sediments form most of the seafloor (Fig. 1).