

DESCRIPTIVE NOTES
The Ukkuaq Flord map sheet, southwestern Cumberland Peninsula, Baffin Island, covers a homogeneous plateau complex and relatively narrow sectors and sections of supracrustal rocks (see cover photograph). Primary rocks include mafic to granitoid rocks (see map legend for details). Amphibolite bodies are scattered throughout the map area. The map area is underlain by a thick sequence of sedimentary rocks, including the Ukkuaq Formation (Uk) and the Ukkuaq Group (Ug). The Ukkuaq Formation (Uk) is a thick sequence of sedimentary rocks, including the Ukkuaq Group (Ug). The Ukkuaq Group (Ug) is a thick sequence of sedimentary rocks, including the Ukkuaq Formation (Uk).

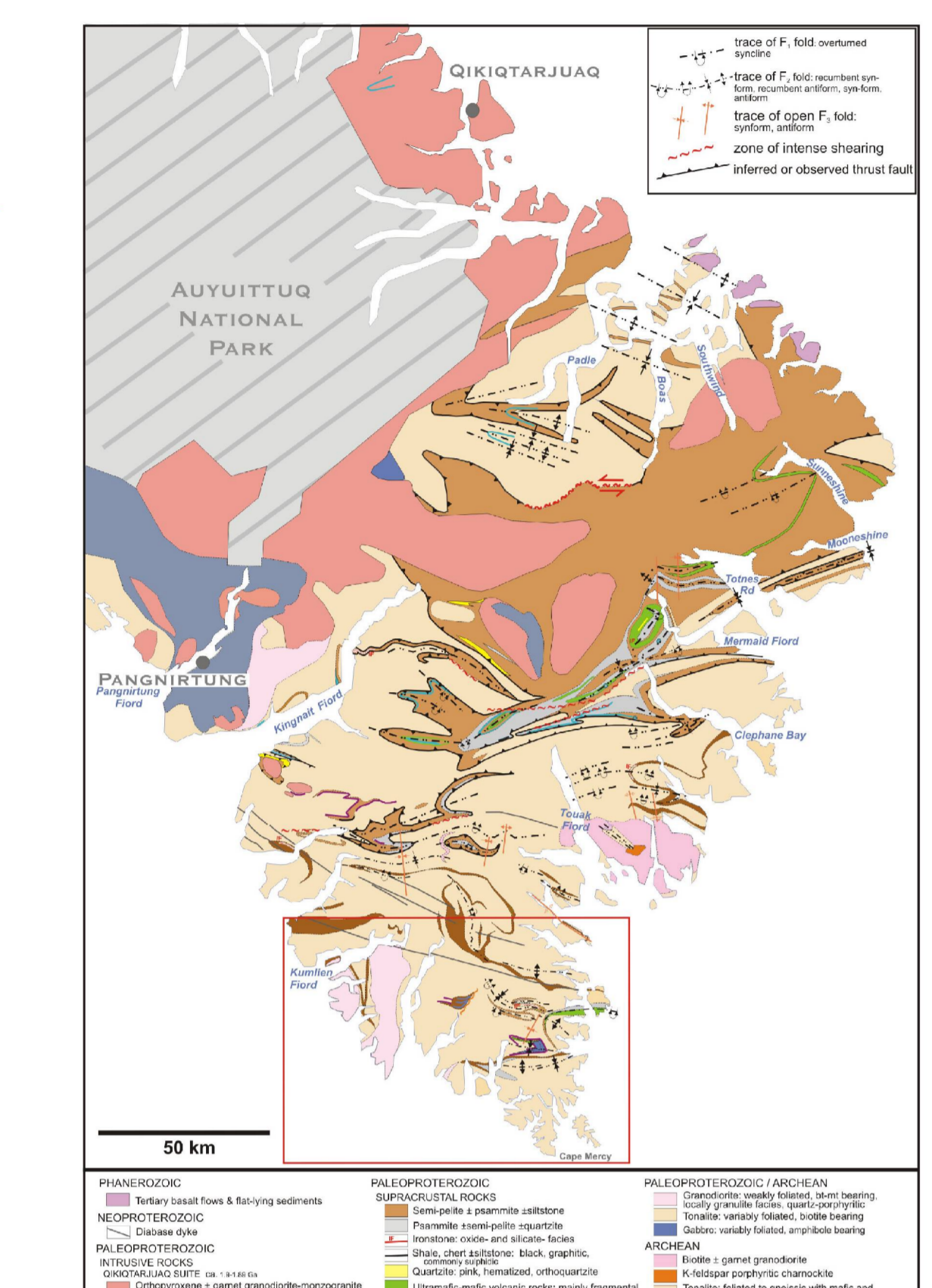


Figure 1. Generalized bedrock geology of Cumberland Peninsula, eastern Baffin Island, showing location of the Ukkuaq Flord map sheet (CGM 1) outlined in red.

Abstract
Cumberland Peninsula, eastern Baffin Island, is an underexplored, frontier region with significant mineral potential. This report provides a geological overview of the region, including a description of the geology, mineral resources, and environmental considerations. The report is intended for use by government agencies, industry, and the public.

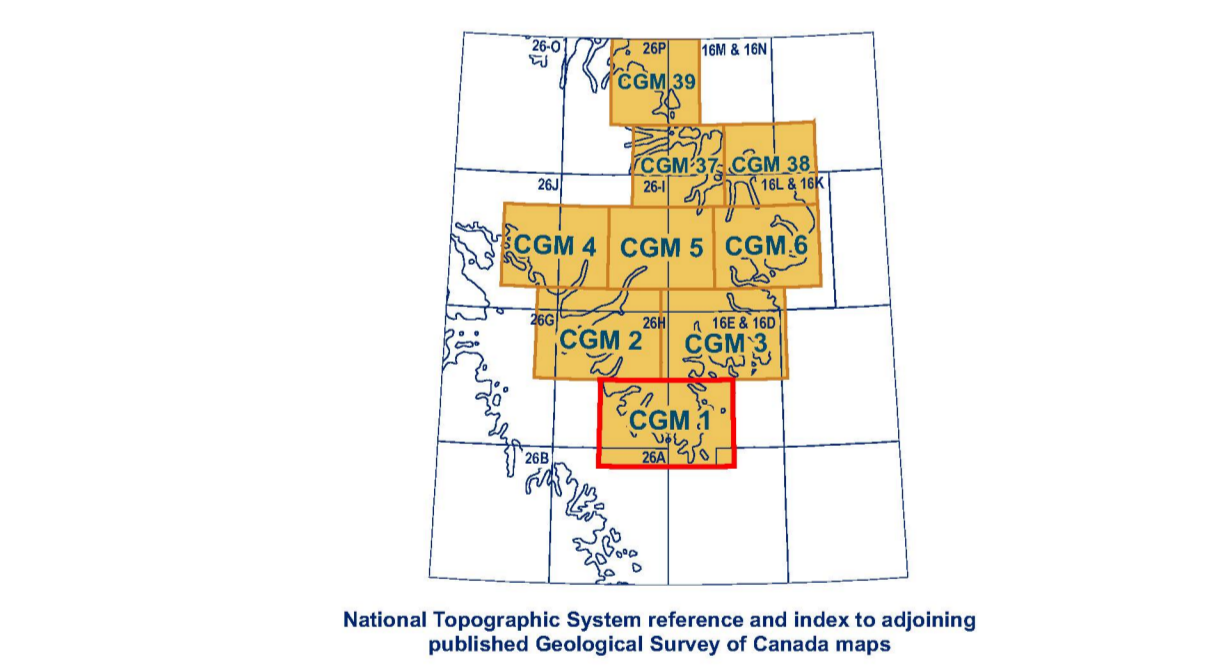


Figure 2. Vertical gradient of the magnetic field for southern Cumberland Peninsula (Dyke 2000) highlighting magnetically defined regions and trends reflected in the bedrock geology of the Ukkuaq Flord sheet.

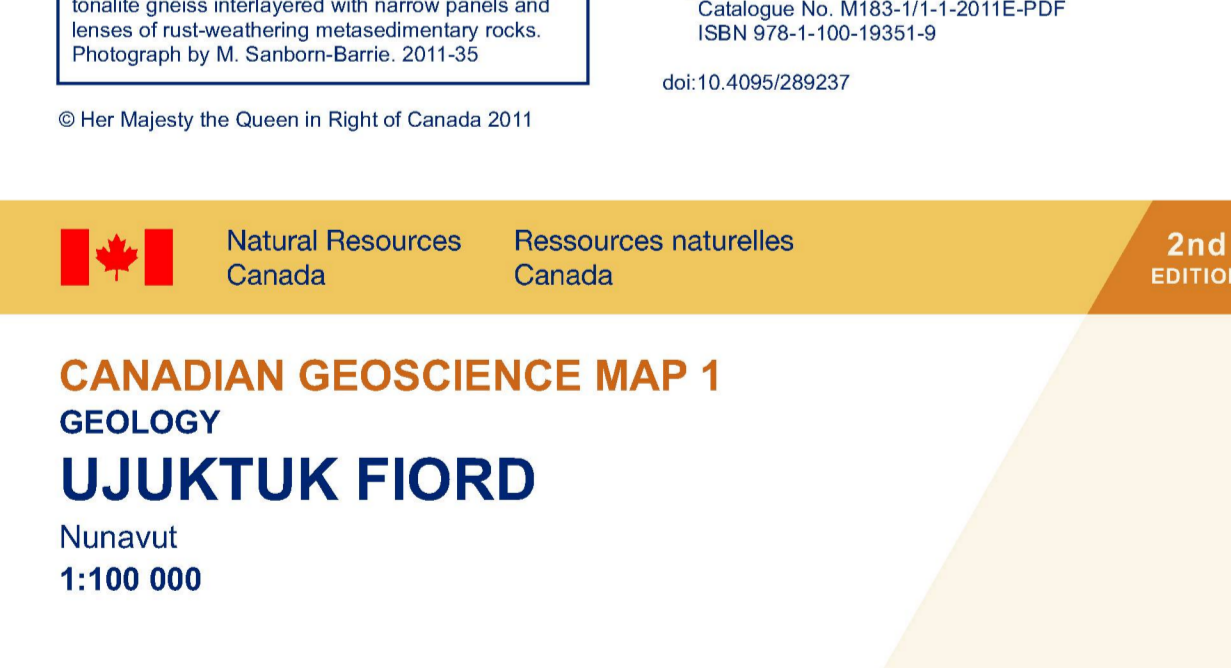
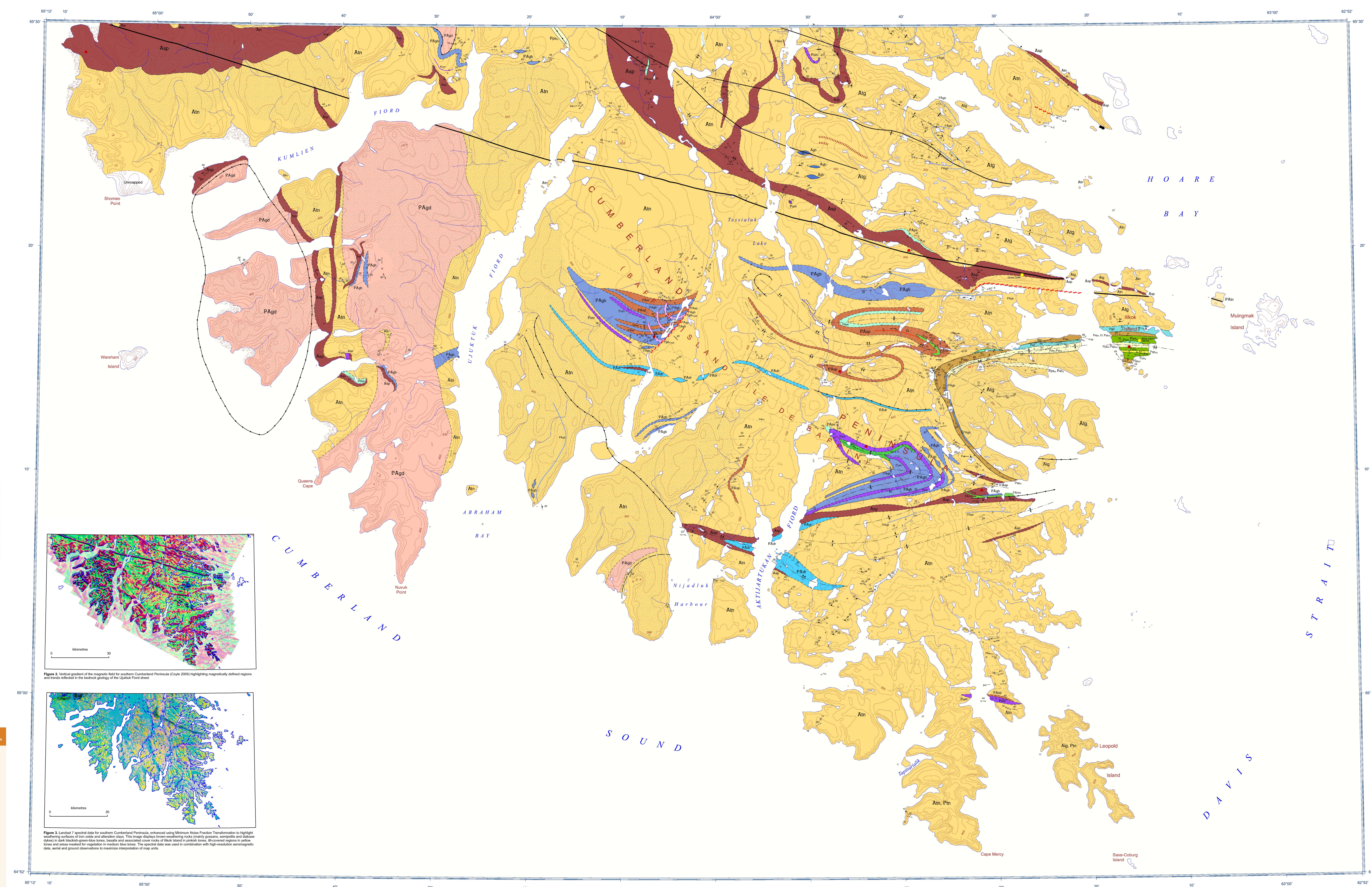


Figure 3. Landsat 5 satellite data for southern Cumberland Peninsula, eastern Baffin Island. The image displays brown-washed rocks (mainly quartzites) and other geological features. The spectral data was used in combination with high-resolution aeromagnetic data, aerial and ground observations to produce an interpretation of the map.



LEGEND
This legend is compiled from CGM 1, CGM 2, and CGM 3. Coloured legend boxes indicate units that appear on this map. Not all symbols shown in the legend are on the map.
QUATERNARY
PLIOCENE-RECENT
NEOPROTEROZOIC
PALEOPROTEROZOIC
ARCHEAN

REFERENCES
Dyke, M., 2000. Bedrock geology of the western domain of the eastern Baffin Island, Cumberland Peninsula, eastern Baffin Island, Nunavut, Canada. Open File 600-10.
Dyke, M.S., 2001. Bedrock geology of the eastern Baffin Island, Baffin Island, Nunavut, Canada. Geological Survey of Canada, Current Content Series 1100, 100 p.

Canadian Geoscience Maps Cartes géoscientifiques du Canada
Natural Resources Canada Ressources naturelles Canada
CANADIAN GEOSCIENCE MAP 1 UJUUKTUK FIOR D Nunavut 1:100 000

Geology of Ukkuaq Flord, Nunavut, Canada. Prepared by M. Seaborn-Banks, M. Young, J. Whalen, and D. James. Geological Survey of Canada, Ottawa, Ontario.
Geological Survey of Canada welcomes comments or suggestions for this map. Contact: M. Seaborn-Banks, M. Young, J. Whalen, and D. James, Canadian Geoscience Maps, 1100, rue de la Confédération, Ottawa, Ontario K1A 0S8.
This publication, including digital data, is available for free on the Internet at: www.nrcc.gc.ca/geomaps.
Map projection: Universal Transverse Mercator, zone 20.
Scale: 1:100 000.
Map date: 2011.
Map revision: 2011.
Map status: Preliminary.

Geology of Ukkuaq Flord, Nunavut, Canada. Prepared by M. Seaborn-Banks, M. Young, J. Whalen, and D. James. Geological Survey of Canada, Ottawa, Ontario.
Geological Survey of Canada welcomes comments or suggestions for this map. Contact: M. Seaborn-Banks, M. Young, J. Whalen, and D. James, Canadian Geoscience Maps, 1100, rue de la Confédération, Ottawa, Ontario K1A 0S8.
This publication, including digital data, is available for free on the Internet at: www.nrcc.gc.ca/geomaps.
Map projection: Universal Transverse Mercator, zone 20.
Scale: 1:100 000.
Map date: 2011.
Map revision: 2011.
Map status: Preliminary.

Geology of Ukkuaq Flord, Nunavut, Canada. Prepared by M. Seaborn-Banks, M. Young, J. Whalen, and D. James. Geological Survey of Canada, Ottawa, Ontario.
Geological Survey of Canada welcomes comments or suggestions for this map. Contact: M. Seaborn-Banks, M. Young, J. Whalen, and D. James, Canadian Geoscience Maps, 1100, rue de la Confédération, Ottawa, Ontario K1A 0S8.
This publication, including digital data, is available for free on the Internet at: www.nrcc.gc.ca/geomaps.
Map projection: Universal Transverse Mercator, zone 20.
Scale: 1:100 000.
Map date: 2011.
Map revision: 2011.
Map status: Preliminary.

Geology of Ukkuaq Flord, Nunavut, Canada. Prepared by M. Seaborn-Banks, M. Young, J. Whalen, and D. James. Geological Survey of Canada, Ottawa, Ontario.
Geological Survey of Canada welcomes comments or suggestions for this map. Contact: M. Seaborn-Banks, M. Young, J. Whalen, and D. James, Canadian Geoscience Maps, 1100, rue de la Confédération, Ottawa, Ontario K1A 0S8.
This publication, including digital data, is available for free on the Internet at: www.nrcc.gc.ca/geomaps.
Map projection: Universal Transverse Mercator, zone 20.
Scale: 1:100 000.
Map date: 2011.
Map revision: 2011.
Map status: Preliminary.