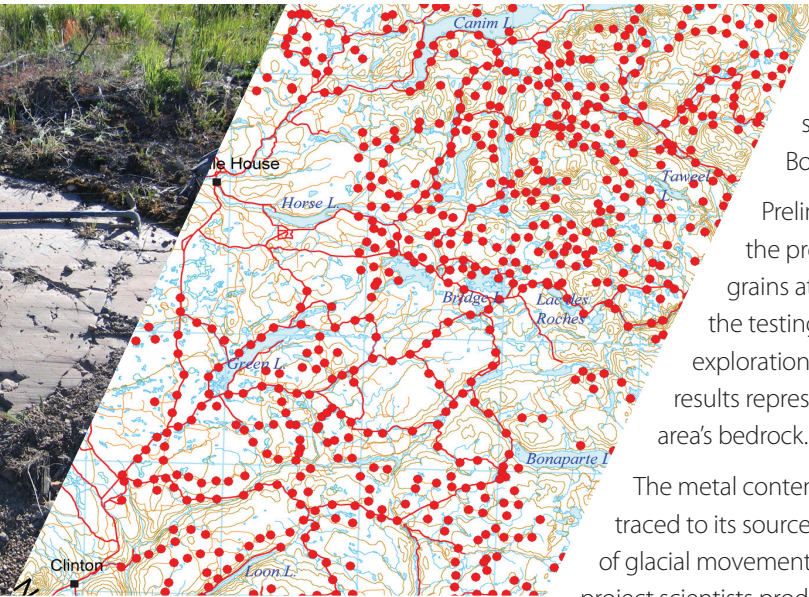
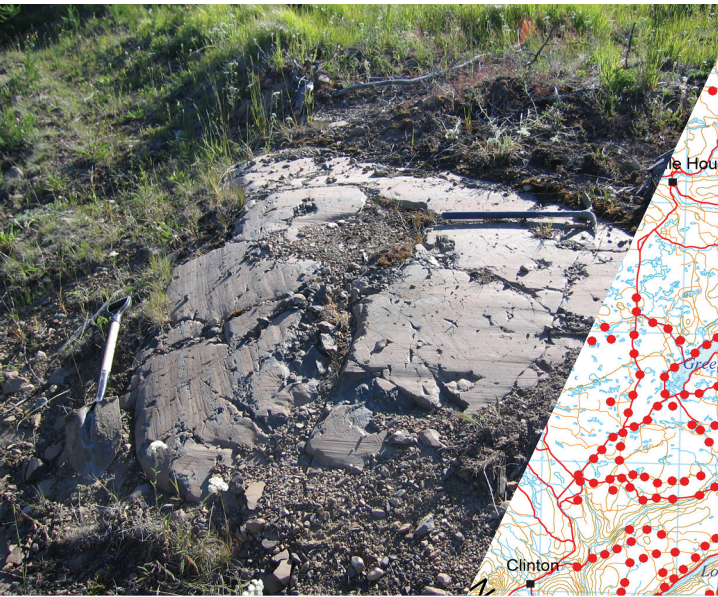




# FROM GLACIERS TO GOLD SEDIMENT SAMPLING ASSISTS MINERAL DISCOVERY

Gold grains discovered in glacial sediment samples could be good news for communities in south central British Columbia. In an area where the Mountain Pine Beetle has chewed through the forest industry, the discovery could open up new economic opportunities by stimulating mineral exploration.

Testing samples of glacial sediment, or till, is one of seven geoscience projects funded by the Government of Canada under the Mountain Pine Beetle Program. Data from these tests are available free from Natural Resources Canada.



In 2007 and 2008, geologists took over 1000 till samples from the 8900 square kilometre region of Bonaparte Lake.

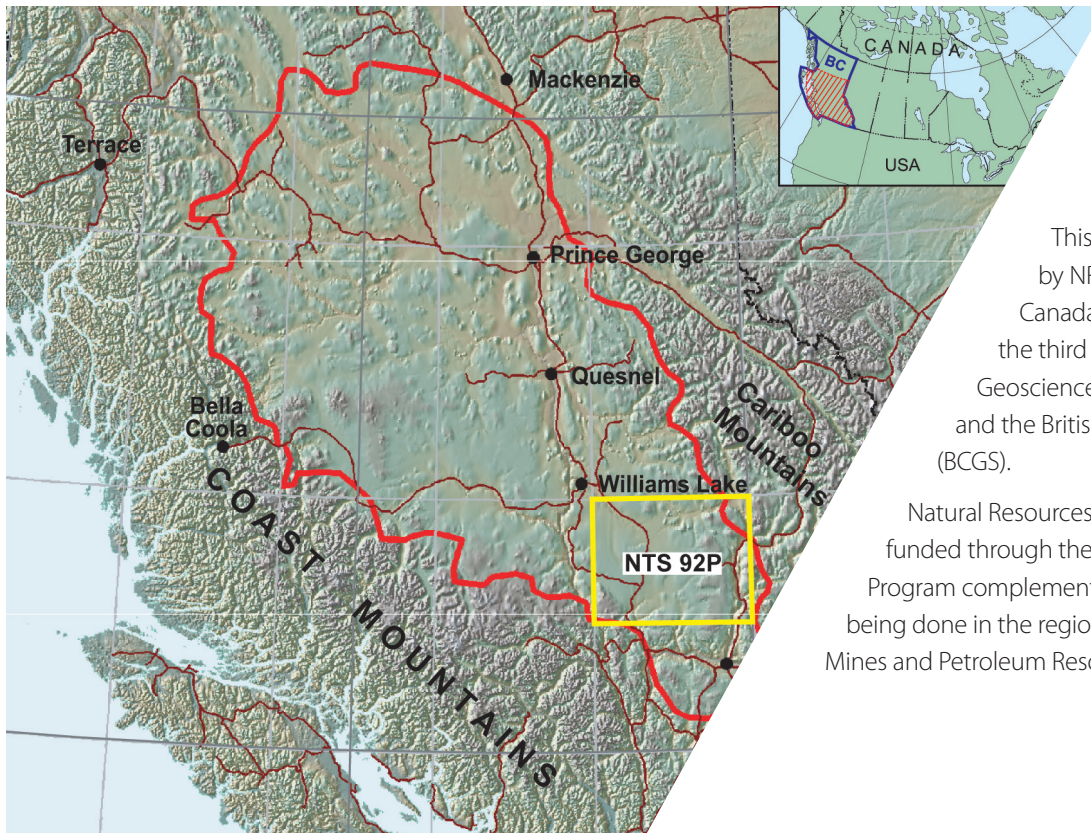
Preliminary test results indicate the presence of abundant gold grains at several sites throughout the testing area. However, further exploration is required to see if these results represent undiscovered gold in the area's bedrock.

The metal content in the sampled till can be traced to its source by following the course of glacial movement. As a key element of this project scientists produced surficial geology maps to reconstruct the glacial history of the region.

*Over 1000 samples were taken from the Bonaparte Lake region in 2007 and 2008.*

While producing these maps, scientists discovered previously unrecognized glacial movement. It was thought that glaciers moved north to south. Scientists now know that glaciers in the Bonaparte Lake region first came from the east and northeast before moving north to south. This new information will assist mineral exploration in the area.





This project is a collaboration by NRCan's Geological Survey of Canada (GSC) with participants of the third phase of the federal Targeted Geoscience Initiative (TGI-3 Cordillera), and the British Columbia Geological Survey (BCGS).

Natural Resources Canada's geoscience surveys funded through the Mountain Pine Beetle Program complement other public geoscience work being done in the region by the BC Ministry of Energy, Mines and Petroleum Resources and by Geoscience BC.

For free data from the till sampling project, and other Mountain Pine Beetle geoscience data, visit [gdr.nrcan.gc.ca](http://gdr.nrcan.gc.ca)

**CONTACT:**

Dr. Alain Plouffe

Natural Resources Canada  
601 Booth Street, Room. 121  
Ottawa, ON  
Canada K1A 0E8

Telephone: (613) 995-4390  
Fax : (613) 992-0190

Email: [aplouffe@nrcan-rncan.gc.ca](mailto:aplouffe@nrcan-rncan.gc.ca)



*Most of the till samples were collected along forestry roads because of easy-to-sample sediment exposure.*

*For more information on Natural Resources Canada's Mountain Pine Beetle Program, visit [forest.forward.nrcan.gc.ca](http://forest.forward.nrcan.gc.ca)*