

TECTONIC SETTING

This map is one of a set of two 1:250 000 scale maps and an accompanying sheet of cross-sections that describe the geological framework of some 2375 km² of east-central Yukon (see report and index map).

ACKNOWLEDGMENTS

Excellent field assistance was provided by T. Frakes (1982), D. Thorkelson (1983), B. Thomas (1985, 1988), S. Carver (1986), S. Irwin (1988), and D. Rhye (1987). During 1989 and 1987, a base camp was shared with the Rose River team.

TECHNICAL SETTING

Excellent field assistance was provided by T. Frakes (1982), D. Thorkelson (1983), B. Thomas (1985, 1988), S. Carver (1986), S. Irwin (1988), and D. Rhye (1987). During 1989 and 1987, a base camp was shared with the Rose River team.

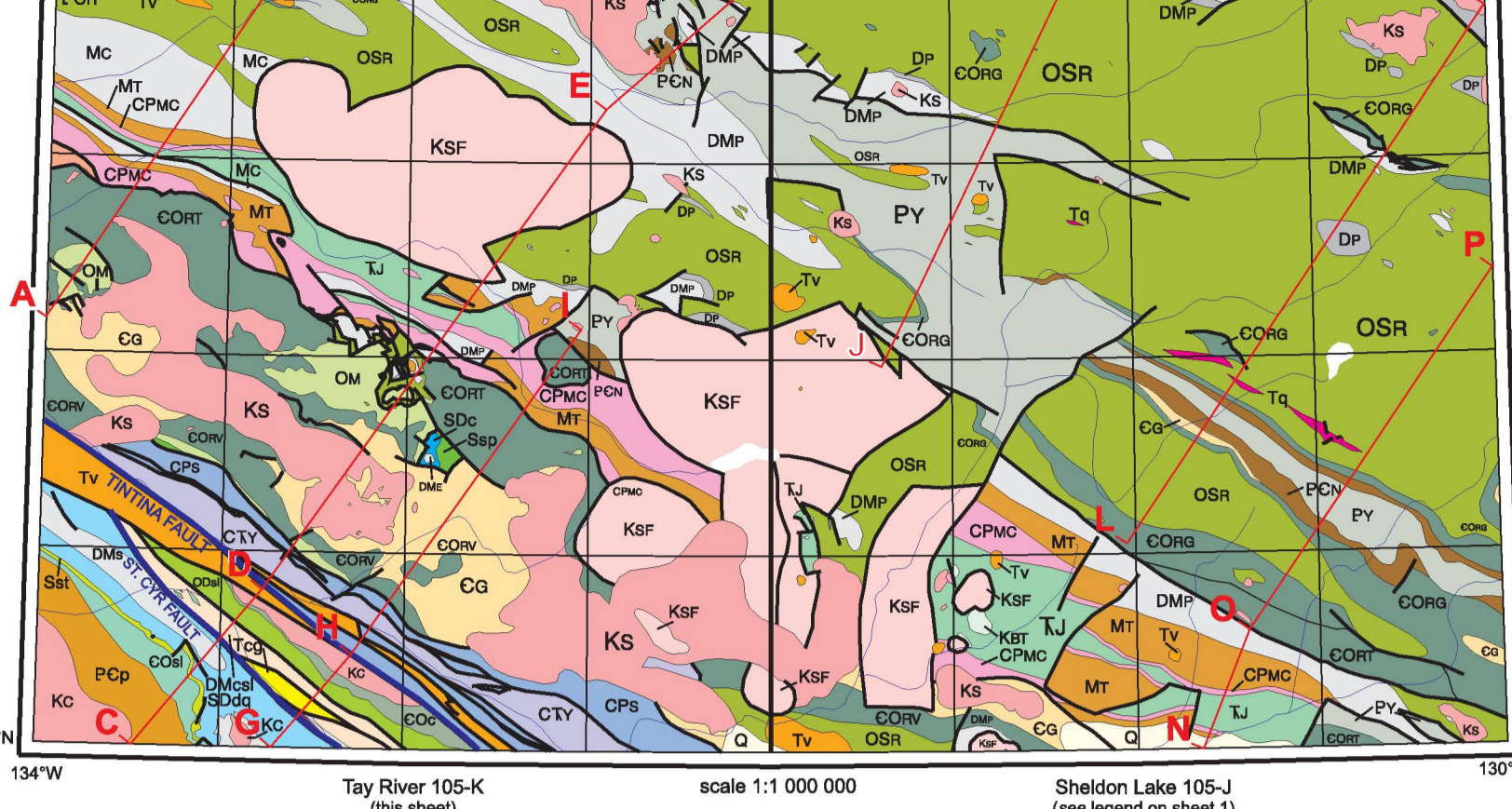
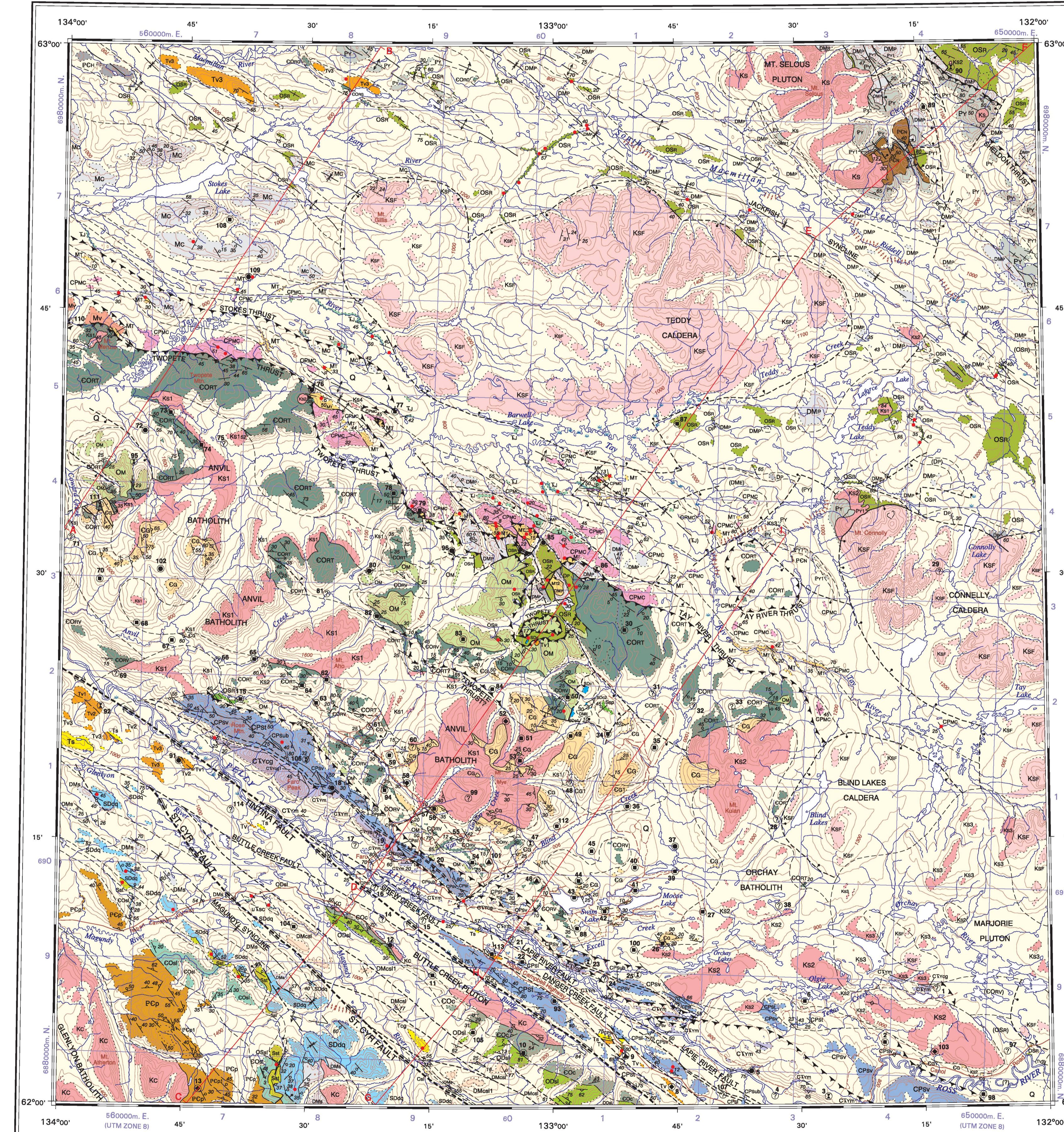


Figure 2. Index map of geology, Tay River-Sheldon Lake area.

Table with 5 columns: MINFILE#, NAME, STATUS, DEPOSIT TYPE, COMMODITY(S) (MAJOR/MINOR/TRACE). Lists various mineral prospects and their characteristics.



MAP 2149A GEOLOGY SELWYN BASIN (SHELDON LAKE AND TAY RIVER) YUKON. Scale 1:250 000/Echelle 1/250 000.

LEGEND

Geological legend detailing rock units from Pleistocene and Recent to Precambrian, including descriptions of units like Q, Tv, Tt, Tcg, Kc, LUC, Cdl, DMs, Sddq, ODsl, COsl, COcl, and Pch.

1. For full MINFILE number, add prefix "105K" or "10580", or "10580K" as appropriate. See MINFILE 15 "10580K".



Table 1. Mineral prospects from Yukon MINFILE 2010.

Universal Transverse Mercator Projection, North American Datum 1983, Projection de coordonnées universelles de Mercator, Datum nord-américain de 1983.



Recommended citation: Gordy, S.P., 2013. Geology, Selwyn Basin (Sheldon Lake and Tay River), Yukon, Geological Survey of Canada, Map 2149A, 2 map sheets, scale 1:250 000 and 1 sheet of cross-sections, scale 1:100 000. doi:10.4095/296203

Sheet 2 of 3: Geology, Tay River