

INTRODUCTION
This contribution is part of the Melville Peninsula Project (MPP) under the Natural Resources Canada's Geomapping for Energy and Minerals (GEM) program...

GEOLOGICAL FRAMEWORK
The Prince Albert Hills are located in the north-central Rae Craton of the western Canadian Shield. They are underlain by Precambrian rocks including the Thengle Lake supracrustal package...

DETAILED GEOLOGY
Previous geological mapping provided a basis to establish the general geological framework and the major lithological units of the southern part of the PACB...

The Thengle Lake supracrustal package is dominated by mafic to intermediate metavolcanic and mafic to intermediate metasedimentary rocks. The rocks are variably deformed and crystallized, ranging from greenschist to amphibolite facies...

The Thengle Lake supracrustal package is dominated by mafic to intermediate metavolcanic and mafic to intermediate metasedimentary rocks. The rocks are variably deformed and crystallized, ranging from greenschist to amphibolite facies...

Structural geology: The PACB has undergone at least two phases of regional deformation under medium-grade metamorphic conditions with the first event dating back to the Archean...

MINERAL POTENTIAL
Mineral exploration in the area dates back to the 1960s. It has been mostly geared towards iron mineralization, but other commodities such as lead, zinc, and copper have also been explored...

Abstract
Supracrustal rocks of western Melville Peninsula from the Prince Albert Greenstone Belt, which is comprised of mafic to intermediate metavolcanic and mafic to intermediate metasedimentary rocks...

Résumé
Les roches supracrustales, âgées de 2,8 Ga, du Groupe de Prince Albert, dans la partie ouest de la péninsule de Melville forment la ceinture de roches vertes du Prince Albert, une unité lithostratigraphique distincte du craton de Rae.

The belt is subdivided into three supracrustal packages: mafic, intermediate, and felsic. The mafic package is dominated by mafic to intermediate metavolcanic and mafic to intermediate metasedimentary rocks...

Structural geology: The PACB has undergone at least two phases of regional deformation under medium-grade metamorphic conditions with the first event dating back to the Archean...

MINERAL POTENTIAL
Mineral exploration in the area dates back to the 1960s. It has been mostly geared towards iron mineralization, but other commodities such as lead, zinc, and copper have also been explored...

Abstract
Supracrustal rocks of western Melville Peninsula from the Prince Albert Greenstone Belt, which is comprised of mafic to intermediate metavolcanic and mafic to intermediate metasedimentary rocks...

Résumé
Les roches supracrustales, âgées de 2,8 Ga, du Groupe de Prince Albert, dans la partie ouest de la péninsule de Melville forment la ceinture de roches vertes du Prince Albert, une unité lithostratigraphique distincte du craton de Rae.

The belt is subdivided into three supracrustal packages: mafic, intermediate, and felsic. The mafic package is dominated by mafic to intermediate metavolcanic and mafic to intermediate metasedimentary rocks...

Structural geology: The PACB has undergone at least two phases of regional deformation under medium-grade metamorphic conditions with the first event dating back to the Archean...

MINERAL POTENTIAL
Mineral exploration in the area dates back to the 1960s. It has been mostly geared towards iron mineralization, but other commodities such as lead, zinc, and copper have also been explored...

Abstract
Supracrustal rocks of western Melville Peninsula from the Prince Albert Greenstone Belt, which is comprised of mafic to intermediate metavolcanic and mafic to intermediate metasedimentary rocks...

Résumé
Les roches supracrustales, âgées de 2,8 Ga, du Groupe de Prince Albert, dans la partie ouest de la péninsule de Melville forment la ceinture de roches vertes du Prince Albert, une unité lithostratigraphique distincte du craton de Rae.

The belt is subdivided into three supracrustal packages: mafic, intermediate, and felsic. The mafic package is dominated by mafic to intermediate metavolcanic and mafic to intermediate metasedimentary rocks...

Structural geology: The PACB has undergone at least two phases of regional deformation under medium-grade metamorphic conditions with the first event dating back to the Archean...

MINERAL POTENTIAL
Mineral exploration in the area dates back to the 1960s. It has been mostly geared towards iron mineralization, but other commodities such as lead, zinc, and copper have also been explored...

Abstract
Supracrustal rocks of western Melville Peninsula from the Prince Albert Greenstone Belt, which is comprised of mafic to intermediate metavolcanic and mafic to intermediate metasedimentary rocks...

Résumé
Les roches supracrustales, âgées de 2,8 Ga, du Groupe de Prince Albert, dans la partie ouest de la péninsule de Melville forment la ceinture de roches vertes du Prince Albert, une unité lithostratigraphique distincte du craton de Rae.

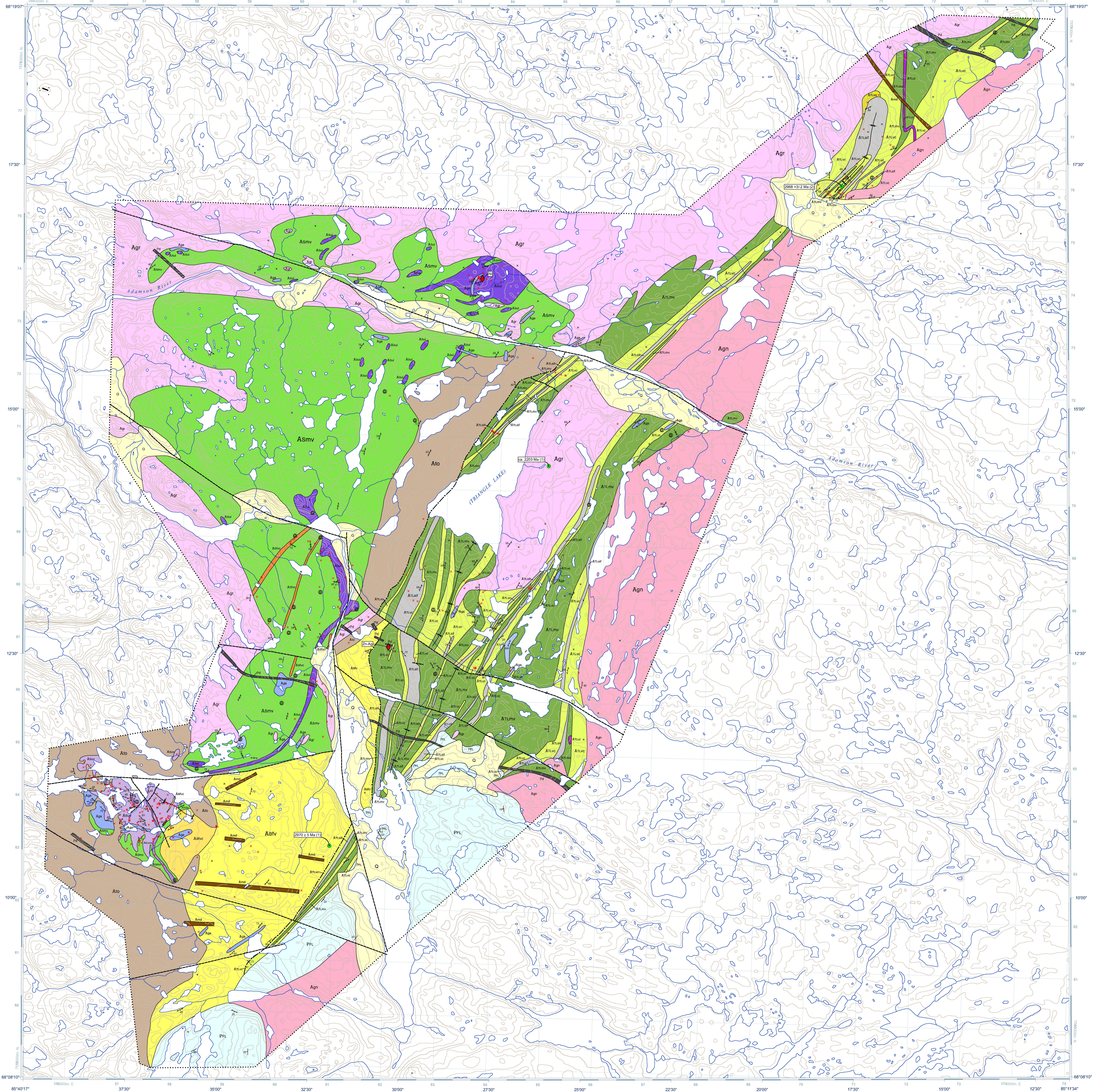
The belt is subdivided into three supracrustal packages: mafic, intermediate, and felsic. The mafic package is dominated by mafic to intermediate metavolcanic and mafic to intermediate metasedimentary rocks...

Structural geology: The PACB has undergone at least two phases of regional deformation under medium-grade metamorphic conditions with the first event dating back to the Archean...

MINERAL POTENTIAL
Mineral exploration in the area dates back to the 1960s. It has been mostly geared towards iron mineralization, but other commodities such as lead, zinc, and copper have also been explored...

Abstract
Supracrustal rocks of western Melville Peninsula from the Prince Albert Greenstone Belt, which is comprised of mafic to intermediate metavolcanic and mafic to intermediate metasedimentary rocks...

Résumé
Les roches supracrustales, âgées de 2,8 Ga, du Groupe de Prince Albert, dans la partie ouest de la péninsule de Melville forment la ceinture de roches vertes du Prince Albert, une unité lithostratigraphique distincte du craton de Rae.



Canadian Geoscience Maps / Cartes géoscientifiques du Canada. Includes logos for Natural Resources Canada and the Geological Survey of Canada.

CANADIAN GEOSCIENCE MAP 44 (preliminary version) SOUTHERN PART OF PRINCE ALBERT GREENSTONE BELT, PRINCE ALBERT HILLS. Includes map projection information, scale, and contact details.

LEGEND, REFERENCES, ACKNOWLEDGMENTS, and Recommended citation. Contains detailed geological symbols, a list of references, acknowledgments, and citation information.