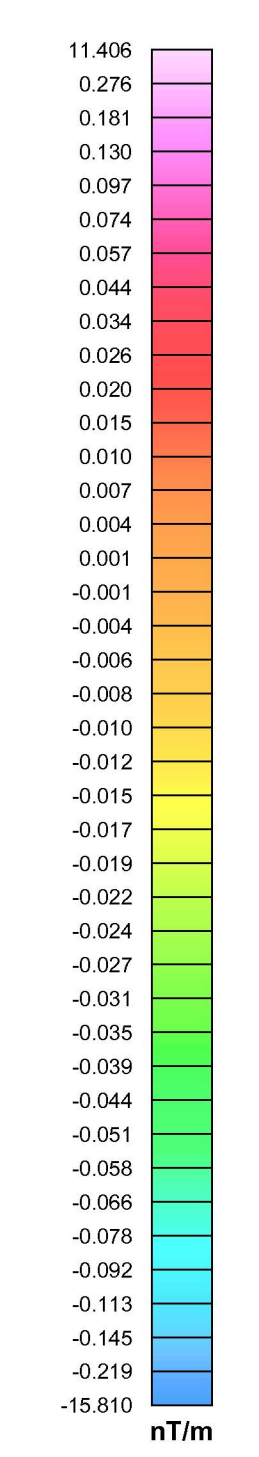
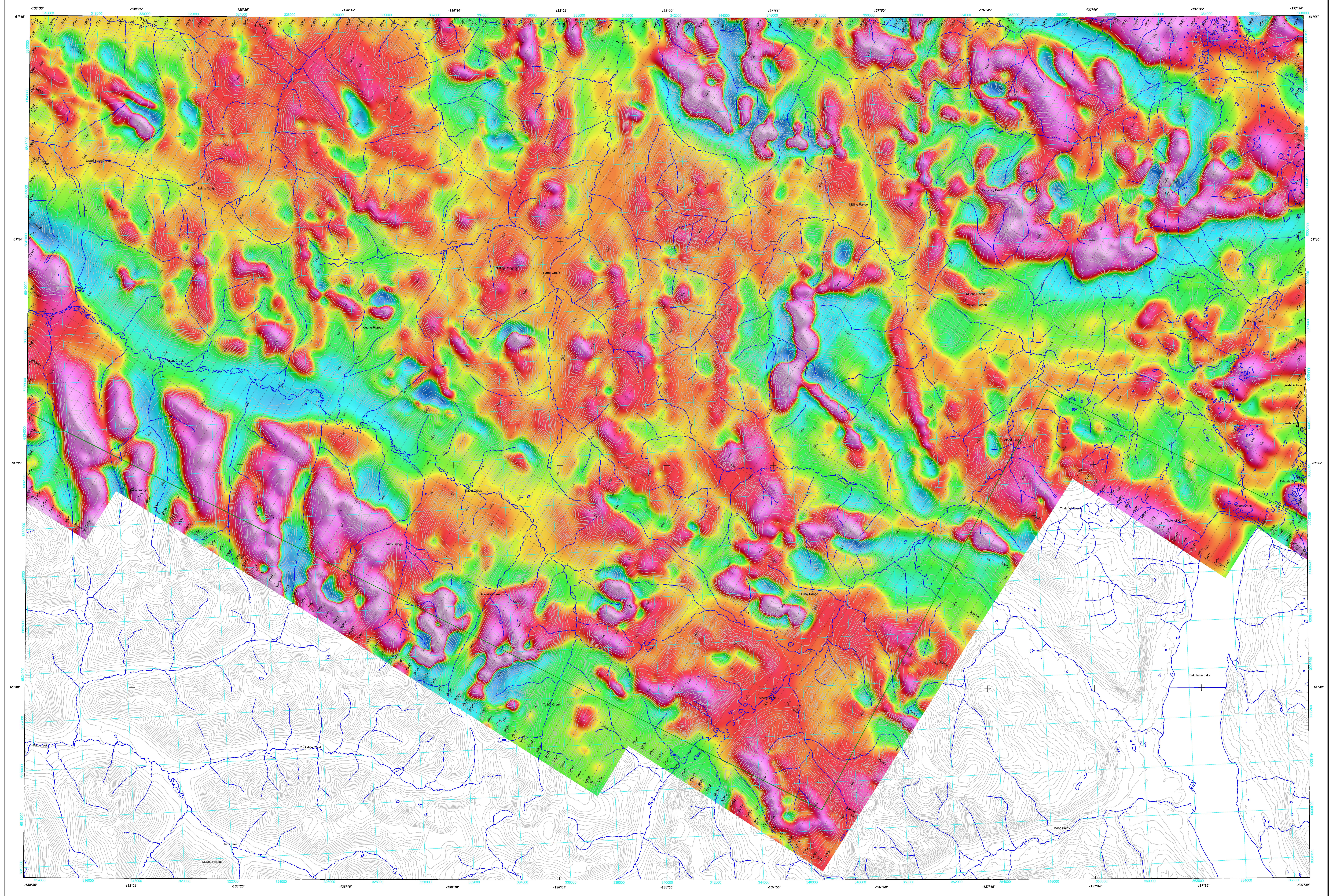


GEOPHYSICAL SERIES / FIRST VERTICAL DERIVATIVE OF THE MAGNETIC FIELD

First Vertical Derivative of the Magnetic Field
This map of the first vertical derivative of the magnetic field was derived from data acquired during an aeromagnetic survey carried out by Geomatics Canada in the Yukon Territory during the period from July 22, 2011...



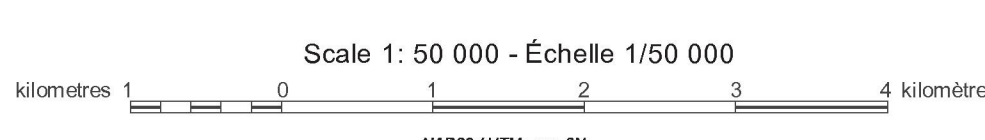
PLANIMÉTRIC SYMBOLS / SYMBOLES PLANIMÉTRIQUES
Table listing symbols for features like Topographic contour, Drainage, Road, Building, Fingert line, Project limit, and their corresponding French labels.

CGC open file numbers in blue / Numéros de dossiers publics de la CGC en bleu
Table listing grid coordinates and corresponding open file numbers for the survey area.

TOPOGRAPHIC CONTOUR INTERVAL: 30 METERS
This aeromagnetic survey and the production of this map were funded by the Geomatics for Energy and Mines (GEM) Program of the Earth Science Sector, Natural Resources Canada.

GSC OPEN FILE 6892 / DOSSIER PUBLIC 6892 DE LA CGC
YGS OPEN FILE 2011-6 / DOSSIER PUBLIC 2011-6 DE LA CGY

FIRST VERTICAL DERIVATIVE OF THE MAGNETIC FIELD
DERIVÉE PREMIÈRE VERTICALE DU CHAMP MAGNÉTIQUE
AEROMAGNETIC SURVEY OF THE NISLING RIVER AREA
LEVÉ AÉROMAGNÉTIQUE DE LA RÉGION DE LA RIVIÈRE NISLING
Parts of NTS 115 G/8, 9 and H/5, 12 / SNRC parties de 115 G/8, 9 et H/5, 12 YUKON



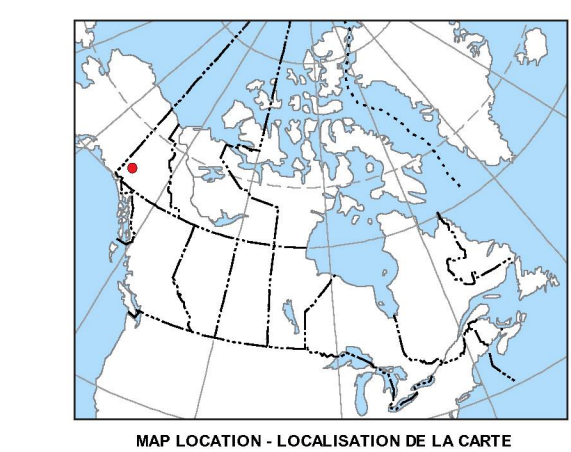
EQUIDISTANCE DES COURBES TOPOGRAPHIQUES: 30 MÈTRES

Authors: F. Kiss and M. Coyle
Data acquisition, compilation and map production by Geomatics Canada, Saskatoon, Saskatchewan. Contract and project management by the Geological Survey of Canada, Ottawa, Ontario.

Authors: F. Kiss and M. Coyle
This aeromagnetic survey and the production of this map were funded by the Geomatics for Energy and Mines (GEM) Program of the Earth Science Sector, Natural Resources Canada.

AEROMAGNETIC SURVEY OF THE NISLING RIVER AREA
LEVÉ AÉROMAGNÉTIQUE DE LA RÉGION DE LA RIVIÈRE NISLING

OPEN FILE DOSSIER PUBLIC 6892 / DOSSIER PUBLIC 2011-6
Table with columns for file number and date (2011).



Recommended citation:
Kiss, F. and Coyle, M., 2011.
First vertical derivative of the magnetic field.
Aeromagnetic Survey of the Nisling River Area,
Parts of NTS 115 G/8, 9 and H/5, 12, Yukon.
Geological Survey of Canada, Open File 6892,
Yukon Geological Survey, Open File 2011-6,
Scale: 1:50 000.