

DESCRIPTIVE NOTES
The Circle Lake map sheet, central Cumberland Peninsula, Baffin Island, exposes classic metasedimentary rocks of the Paleoproterozoic. These rocks are locally relatively homogeneous, variably foliated Paleoproterozoic monzonite, charnockitic orthogneiss and gabbro.

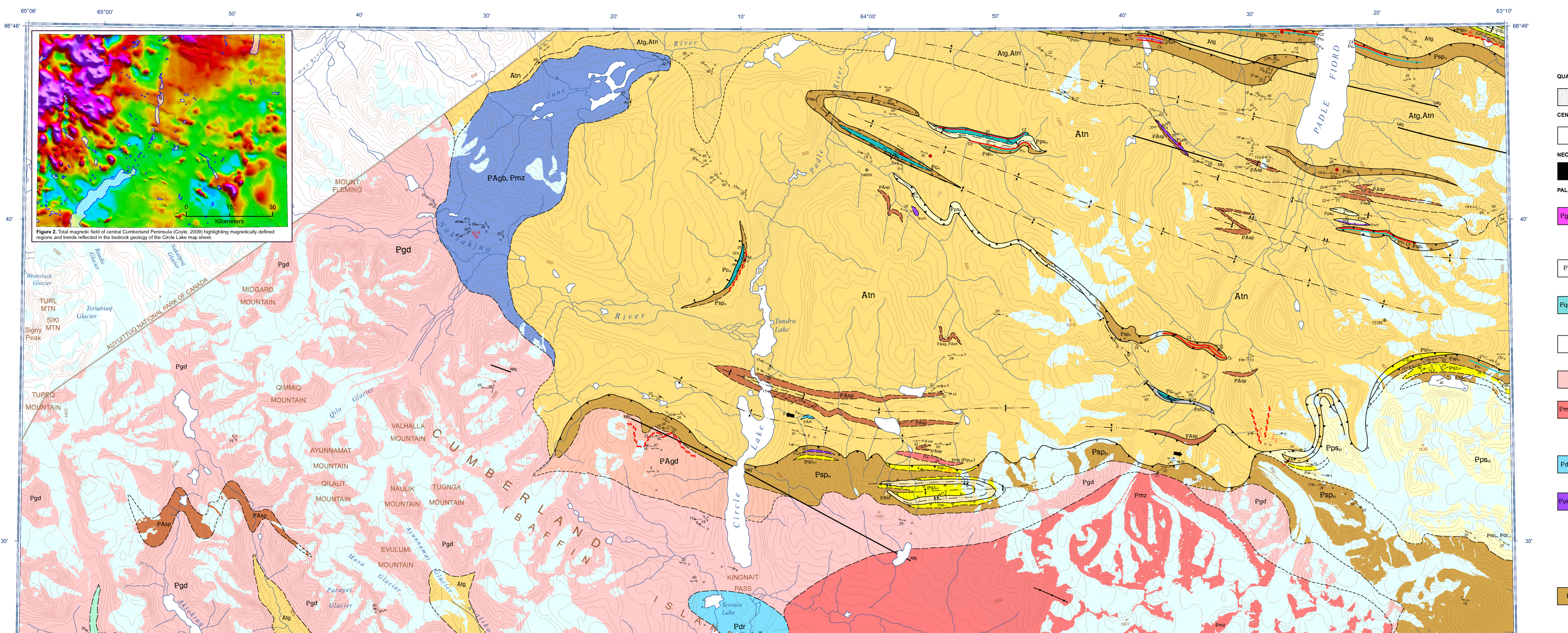


Figure 1. Generalized bedrock geology of Cumberland Peninsula, eastern Baffin Island, showing location of the Circle Lake map sheet (CGM 5) outlined in red.

Abstract
Cumberland Peninsula, eastern Baffin Island, is an elongated tectonic region with significant crustal shortening and transpression. It is characterized by Paleoproterozoic monzonite, charnockitic orthogneiss, gabbro, and mafic to mafic-ultramafic rocks.

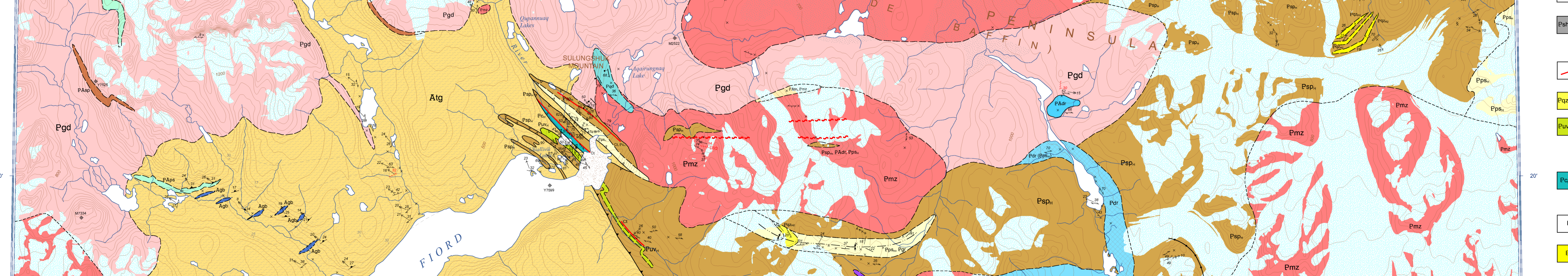


Figure 2. Total magnetic field of central Cumberland Peninsula (Circle Lake, 2009) highlighting magnetically defined regions and trends reflected in the bedrock geology of the Circle Lake map sheet.

LEGEND
QUATERNARY: Unconsolidated deposits (muddy silt and fluvial deposits)
CENOZOIC: Benthic/terrigenous: Fluvial point bar, basal flows and fan-like with local underlying marine sandstone, shale, conglomerate and coal (Quaternary and Paleocene)
NEOPROTEROZOIC ca. 725 Ma: Database dyke: NW-trending, medium brown weathering, equigranular, magnetite-bearing mafic dykes of the ca. 725 Ma Tundra swarm (Troutman et al., 1992).

Supracrustal rocks legend:
Pmz: Paleoproterozoic monzonite: light grey to white weathering, weakly to moderately foliated homogeneous to non-magnetic.
Pgd: Granodiorite: light grey weathered, medium-grained biotite/orthopyroxene gabbro to monzonite.
Psp: Semipelitic amphibolite: light grey to white weathering, layered mafic-ultramafic rocks.

REFERENCES
Chamberlain, P. M., & Hanson, R. W. (1992). The geology of the Cumberland Peninsula, eastern Baffin Island, Nunavut, Canadian Geoscience Map 5 (preliminary), scale 1:100,000.

Canadian Geoscience Maps
Natural Resources Canada
Resources naturelles du Canada
CANADIAN GEOSCIENCE MAP 5
GEOLOGY
CIRCLE LAKE
Baffin Island, Nunavut
1:100 000

Geological Survey of Canada
CANADIAN GEOSCIENCE MAP 5
GEOLOGY
CIRCLE LAKE
Baffin Island, Nunavut
1:100 000
Map projection: Universal Transverse Mercator, zone 20, North American Datum 1983.

Geological Survey of Canada
CANADIAN GEOSCIENCE MAP 5
GEOLOGY
CIRCLE LAKE
Baffin Island, Nunavut
1:100 000
This publication is available for free download through GEOGGAN (http://geoscan.mcgill.ca/)