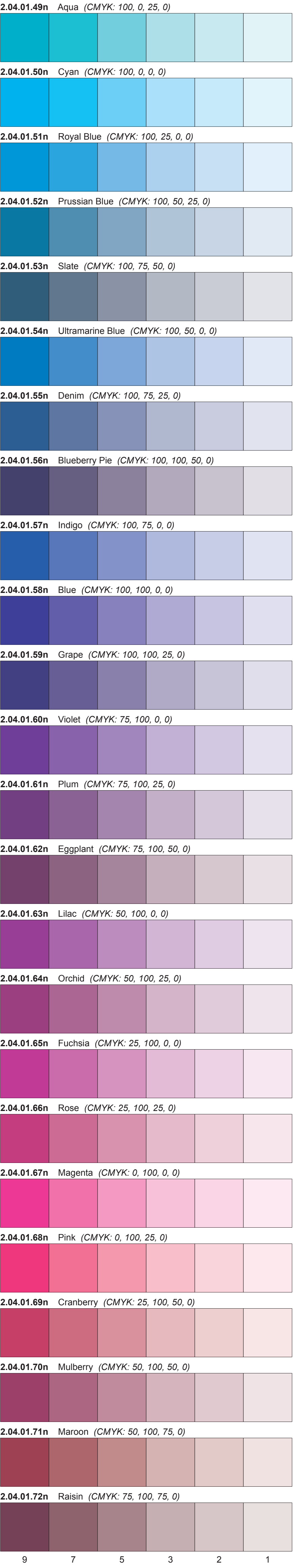
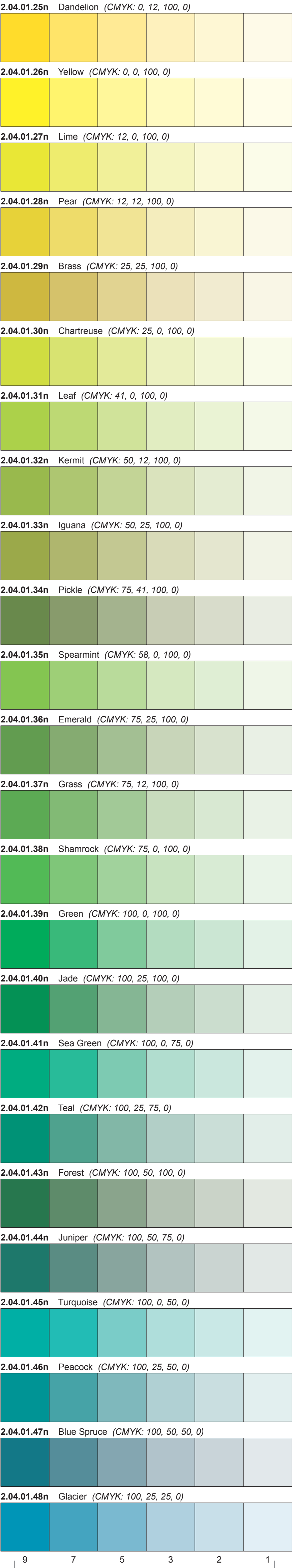
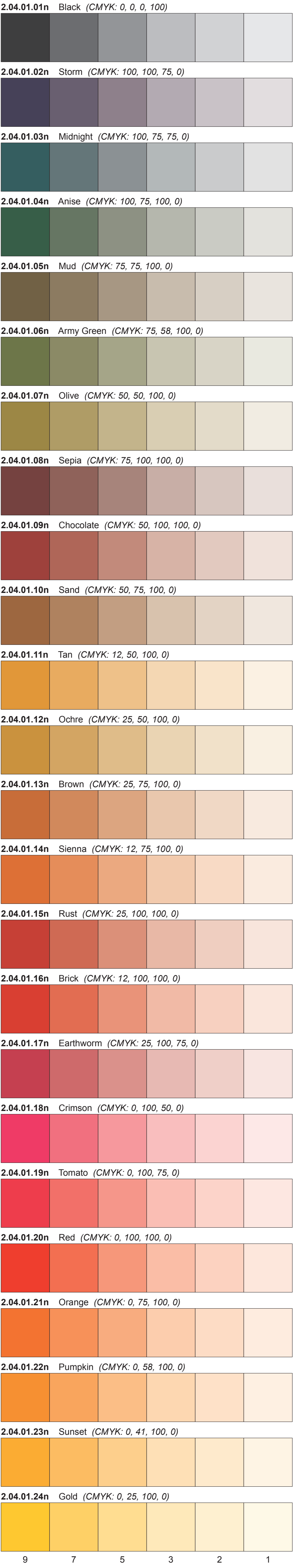


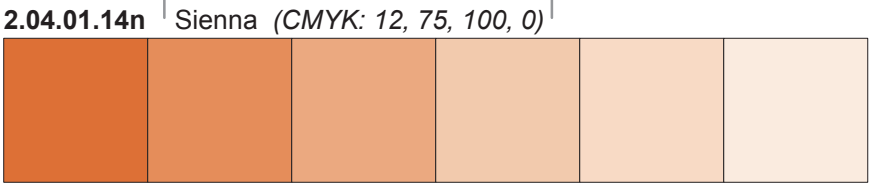
Standard GSC ArcGIS Colours V2



These solid colour fill symbol items used in ArcMap provides a broader selection of lighter colour values, resulting in better map legibility, and less paper rippling due to lower ink density on the paper surface. Each colour is displayed in six tints, representing a percentage of the CMYK values that define the colour. All these symbols exist in the standard GSC symbol style file for geologic map production.

These numbers indicate the six tints of the colour, where 9 is 90%, 7 is 70%, and so on.

This string of numbers is the prefix for the symbol item name in the standard GSC symbol style file for all six tints, where **n** represents the digit along the bottom. For example, symbol **2.04.01.147** is a 70% tint of the colour Sienna.



The name of the colour and its CMYK (cyan, magenta, yellow and black) values as a percentage, from which all tints are based upon.