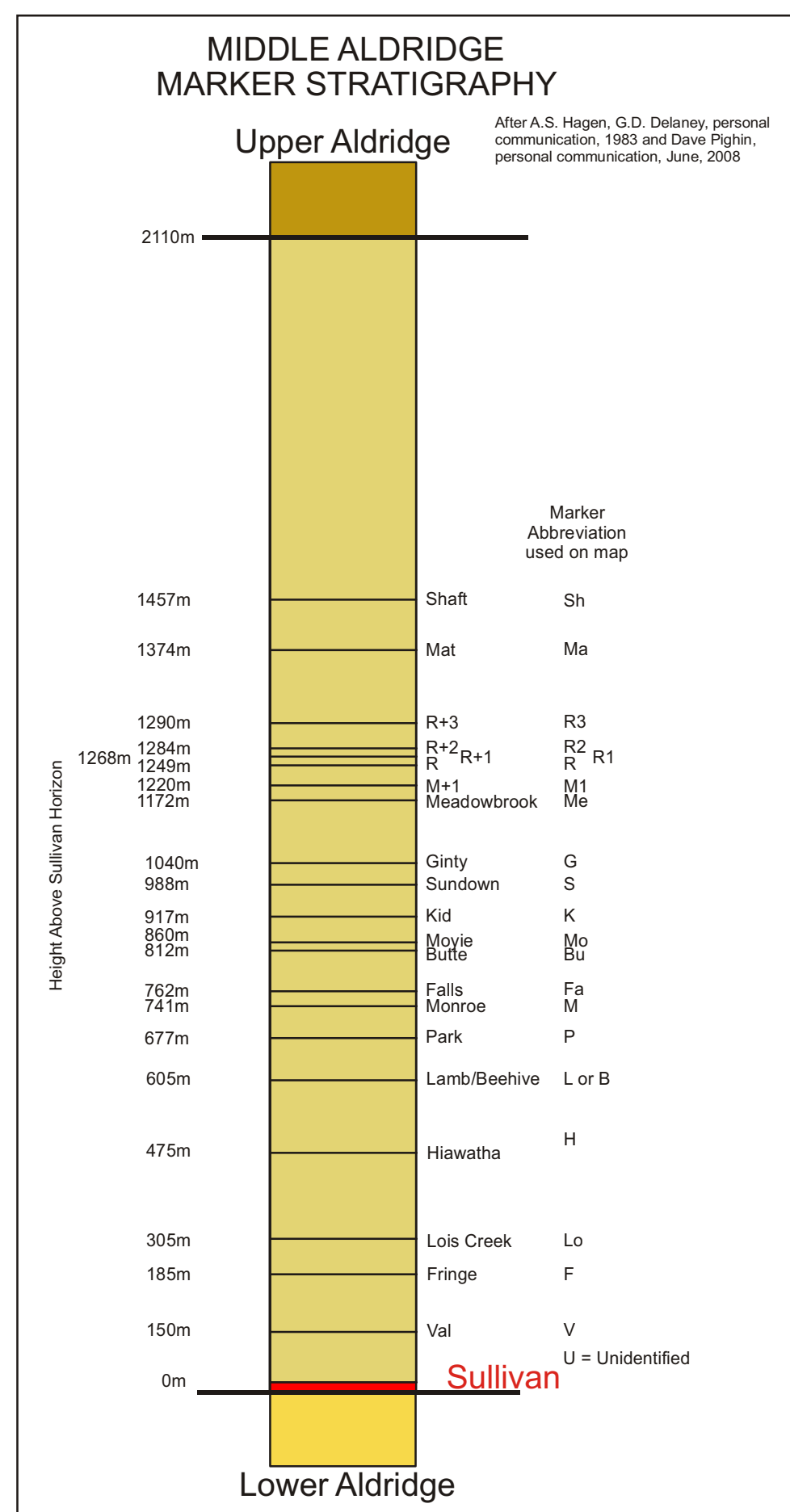


LEGEND

- Coloured legend blocks indicate map units that appear on this map.
- LAYERED ROCKS**
- QUATERNARY**
- Qal Unconsolidated sediments: alluvium, colluvium, diastirics
- PROTEROZOIC**
- MESOPROTEROZOIC**
- PURCELL SUPERGROUP**
- KITCHENER FORMATION**
- MpK Thin-bedded, brown-weathering dolomitic siltstone and green argillite.
 - MpKcm MIDDLE: Dolomitic siltstone; dolomitic argillite; dolomite, commonly buff-weathering; argillite; siltstone; quartzite; green-fingred dolomitic siltstone near the base.
 - MpKI LOWER: green and beige siltstone; dark grey argillite; dolomitic siltstone.
- CRESTON FORMATION**
- mPc Light grey, mauve, or green siltstone and argillite; thin to medium-bedded quartz arenite, quartz wacke; lenticular bedding, ripples, cross-bedding, and mudcracks.
 - MpCu UPPER: green siltstone; black and purple argillite and siltstone.
 - MpCm MIDDLE: light grey, mauve, purple, thin to medium-bedded quartz arenite; quartz wacke; lesser grey siltstone and argillite. White quartzite interbeds. Lenticular bedding, ripples, cross-bedding, and mudcracks.
 - MpCl LOWER: assay green to olive, tan-weathering, thin to thick bedded to laminated argillite and siltstone; lesser fine grained quartz wacke. Wavy bedding and abundant mudcracks common.
- ALDRIDGE FORMATION**
- MpA Quartzolitic argillite wacke, siltstone and argillite.
 - MpAr Sedimentary fragmental: stratiform to discordant matrix to framework-supported angular to angular to rounded, fine quartz wacke fragmental; fragment also may form 20cm to 50cm interbedded to the fragmentary debris flows, dewatering structures, mud volcanoes and hydrothermal breccias.
 - MpAu UPPER: rusty-brown weathering, grey to dark grey, fissile to platy, laminated silty argillite and siltstone.
 - MpAm MIDDLE: grey to rusty-weathering, thin to thick bedded, quartz of silty argillite wacke; intercalated argillite and siltstone.
 - MpAl LOWER: light grey weathering, medium to thick bedded, medium to fine-grained, quartzite, quartz arenite, and quartz wacke; lenticular bedding and cross bedding occur locally.
 - MpAr "Ramparts Facies" member: light grey weathering, medium to thick bedded, medium to fine-grained quartzite, quartz arenite and quartz wacke; local lenticular bedding and cross-bedding; rare rusty-brown quartz wacke layers towards base of the exposed section.
- INTRUSIVE ROCKS**
- AGE UNKNOWN**
- Kdia Diabase: Lamprophyre sills and dykes in the Middle Aldridge Formation; brown weathering, carbonized, large megacrysts and xenocrysts of phlogopite, amphibole, and groenove in a fine-grained, dark olivine matrix; 10-50 percent by volume xenocrysts; sedimentary lower crustal, and mantle xenocrysts; possibly Cretaceous in age.
- MESOPROTEROZOIC**
- Mpb Mafic sills and/or dikes similar composition to Moyie sills but hosted in younger than middle Aldridge strata.
- MOYIE INTRUSIONS**
- MpM "Moyie sills": dark-green to black, medium to fine-grained gabbro, and hornblende quartz diorite sills and dikes; several to hundreds of metres thick; circa 1457 Ma (Anderson and Davis, 1999).

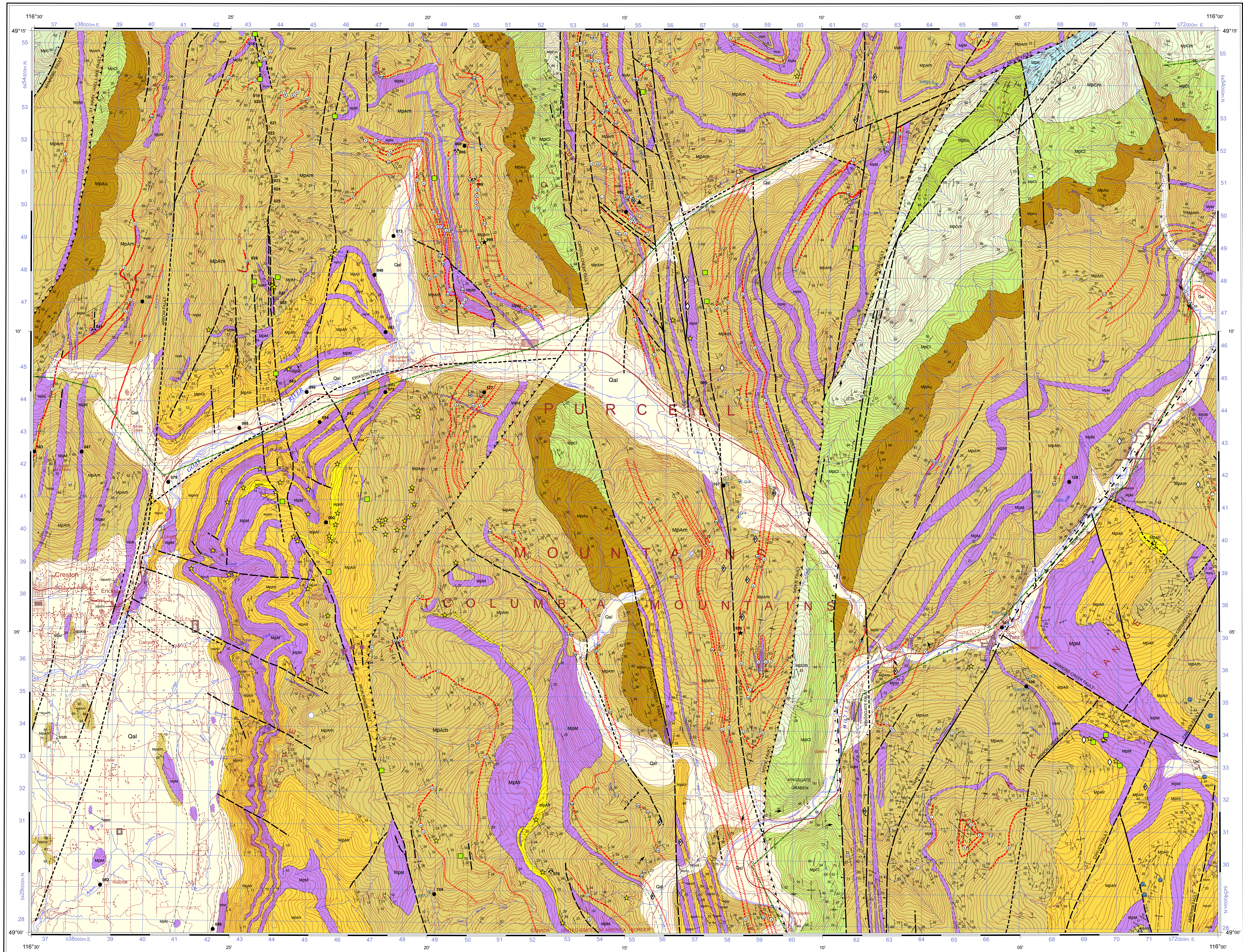
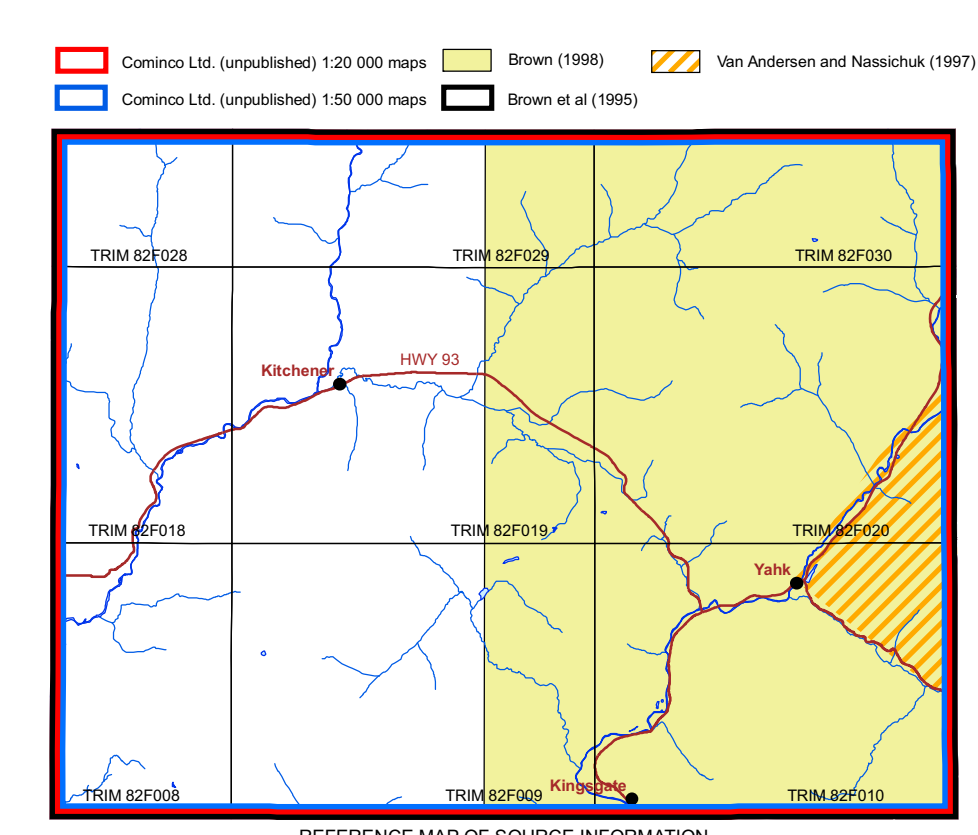
- SYMBOLS**
- Bedding: inclined, vertical
 - Bedding: facing direction known, right way up overturned
 - Foliation: schistosity, fracture cleavage: inclined, vertical
 - Thrust fault: fracture
 - Fold axis: asymmetric, Z-fold
 - Fold axis: asymmetric, S-fold
 - Fragmentals (isolated exposures)
 - Tourmalinite: outcrop, stratiform, discordant, root
 - Albite alteration
 - Hematite and magnetite alteration
 - Garnetiferous beds (manganese-rich gneiss)
 - Lead isotopes
 - Marker locality (see index at left for abbreviations)
 - MINFILE: mineral occurrence (see table at left)
 - producer, past producer: developed prospect, prospect, showing, anomaly
 - Paleocurrent direction
 - Adit, drill hole and reference number
 - Outcrop
 - Geological contact: defined, approximate, assumed
 - Quaternary limit
 - Fault: defined, approximate, assumed
 - Fault: thrust: defined, approximate, assumed
 - Fault: extension (solid circle indicates downthrown side): defined, approximate, assumed
 - Syncline: upright, overturned, plunging
 - Anticline: upright, overturned, plunging
 - Marker horizon projection: approximate, assumed
 - Approximate location of seismic line

- REFERENCES**
- Anderson, H. E. and Davis, D. W.
1995. U-Pb geochronology of the Moyie sills, Purcell Supergroup, southeastern British Columbia: implications for the Mesoproterozoic geological history of the Purcell Belt basin. *Canadian Journal of Earth Sciences*, volume 32, pages 1180-1183.
- Brown, D.A.
1998. Geological compilation of the Yaha (East Half) and Yaha River (West Half) Map Areas, Southeastern British Columbia. B.C. Ministry of Energy and Mines. Geoscience Map 1998-2, scale 1:50 000.
- Brown, D.A., Bradford, J.A., Bennett, P., Beville, D.M. and Bennett, P.
1995. Geology of the Yaha Map Area, Southeastern British Columbia. B.C. Ministry of Energy, Mines and Petroleum Resources. Open File 1995-2.
- Common LIT. Unpublished maps, internal reports, and memos.
- Dowse, C.C. and Anderson, D.
2005. Geological Report for the Iron Range Property, B.C. Ministry of Energy, Mines, and Petroleum Resources. ARIS Assessment Report 20117, 42 p.
- Gil, L. and Weidner, S.
1995a. Geological evaluation of the Kitchener South Property, B.C. Ministry of Energy, Mines, and Petroleum Resources. ARIS Assessment Report 20119, 42 p.
- Gil, L. and Weidner, S.
1995b. Geological evaluation of the Kitchener North Property, B.C. Ministry of Energy, Mines, and Petroleum Resources. ARIS Assessment Report 20119, 52 p.
- Reesor, J.E.
1980. Geology, Kootenay Lake, British Columbia. Geological Survey of Canada, Map 1864A, scale 1:100 000.
- Van Amerongen, P. and Nasirshah, B.
1997. Yaha Project Geology. Unpublished company map, Abitibi & Seabrook Mining Corp.



MINFILE TABLE

MINFILE NO.	NAME	STATUS	COMMODITIES
09P-RE004	LEAVELLE	Expl. Producer	PB ZN CU AG PB ZN CU AU
09P-RE011	KAY	Strategic	FE
09P-RE016	AMERICAN (A.I. DENT)	Prospect	FE
09P-RE017	CHERRY CREEK	Prospect	FE
09P-RE018	MADE (LEAF L. 0772)	Prospect	FE
09P-RE019	KEEFE (S.A. 0776)	Prospect	FE
09P-RE020	WOODS (S.A. 0778)	Prospect	FE
09P-RE021	LA GRANDE (S.L. 0779)	Prospect	FE
09P-RE022	CRACKER (JACK L. 0778)	Prospect	FE
09P-RE023	DAVID (S.L. 0781)	Prospect	FE
09P-RE024	RACINE (S.L. 0782)	Prospect	FE
09P-RE025	ANGUS (S.L. 0783)	Prospect	FE
09P-RE026	NEEDHAM	Prospect	FE
09P-RE027	CONROY (LAFRANCE L. 0808)	Strategic	FE
09P-RE028	EMPIRE STATE	Strategic	AG ZN CU AU PB ZN CU
09P-RE029	WINDYBUSH	Strategic	AG ZN CU AU PB ZN CU
09P-RE030	CRESTON HILL	Strategic	AG ZN CU AU
09P-RE031	KAYVILLE	Strategic	AG ZN CU AU
09P-RE032	OTTO SILVER	Strategic	AG ZN CU AU
09P-RE033	LAUREL	Strategic	AG ZN CU AU
09P-RE034	OGAN MOUNTAIN	Strategic	AG ZN CU AU PB ZN CU
09P-RE035	BLUE HAIN	Strategic	AG ZN CU AU
09P-RE036	BLAINE	Strategic	AG ZN CU AU
09P-RE037	BEAUMONT	Strategic	AG ZN CU AU
09P-RE038	LEWIS	Strategic	AG ZN CU AU
09P-RE039	STAR (WEST)	Strategic	PB ZN CU AG PB ZN CU
09P-RE040	STAR (EAST)	Strategic	PB ZN CU AG PB ZN CU
09P-RE041	SARAL	Strategic	ZN AG PB ZN AG
09P-RE042	KITCHENER HILLMAN	Strategic	ZN CU AU
09P-RE043	CRESTON	Strategic	ZN
09P-RE044	BAK	Strategic	CU ZN CU AU
09P-RE045	YAK	Strategic	PB ZN AG PB ZN
09P-RE046	SKA	Strategic	CU ZN CU AU
09P-RE047	GRATFELL	Strategic	ZN PB ZN
09P-RE048	ROCK	Strategic	ZN PB ZN
09P-RE049	SUN	Strategic	AG ZN PB AG ZN
09P-RE050	EMU	Strategic	FE ZN PB ZN
09P-RE051	SIA NORTH	Anomaly	ZN PB ZN
09P-RE052	SIA SOUTH	Anomaly	ZN PB ZN



This publication is available from the Geological Survey of Canada Bookstore (http://www.gsc.gc.ca/bookstore/index_e.html) or can also be downloaded free of charge from Geopub (http://geopub.nrcan.gc.ca/arc/1446902882)

Compilers: P. Giombick, D.A. Brown, and R.F. MacLeod
Geological compilation by P. Giombick, 2006; D.A. Brown, 2008-2009; and R.F. MacLeod, 2008-2009
Co-ordinated through the auspices of the Targeted Geoscience Initiative (TGI)
Digital cartography by R.F. MacLeod, Geological Survey of Canada (Pacific Division)

OPEN FILE 6153 (REVISED)
GEOLOGY
YAHK
BRITISH COLUMBIA
Scale 1:50 000/Echelle 1/50 000
Universal Transverse Mercator Projection
North American Datum 1983
© Her Majesty the Queen in Right of Canada 2011

Digital base map from data compiled by Geomatics Canada, modified by R.F. MacLeod
Magnetic declination 2011, 15° 35' E, decreasing 11' annually
Elevations in feet above mean sea level
Contour interval 100 feet
Universal Transverse Mercator Projection
North American Datum 1983
© Her Majesty the Queen in Right of Canada 2011

OPEN FILE 6153
2011
Les données publiées ont été produites au titre de la politique de publication de la GSC

OF607	OF608	OF609
OF610	OF609	OF603
OF612	OF613	OF604

OPEN FILE DOSSIER PUBLIC 6153
2011
Les données publiées ont été produites au titre de la politique de publication de la GSC

Recommended citation:
Giombick, P., Brown, D.A., and MacLeod, R.F. (compilers)
2011. Geology, Yaha, British Columbia. Geological Survey of Canada, Open File 6153, (revised) scale 1:50 000. doi:10.4095/289527