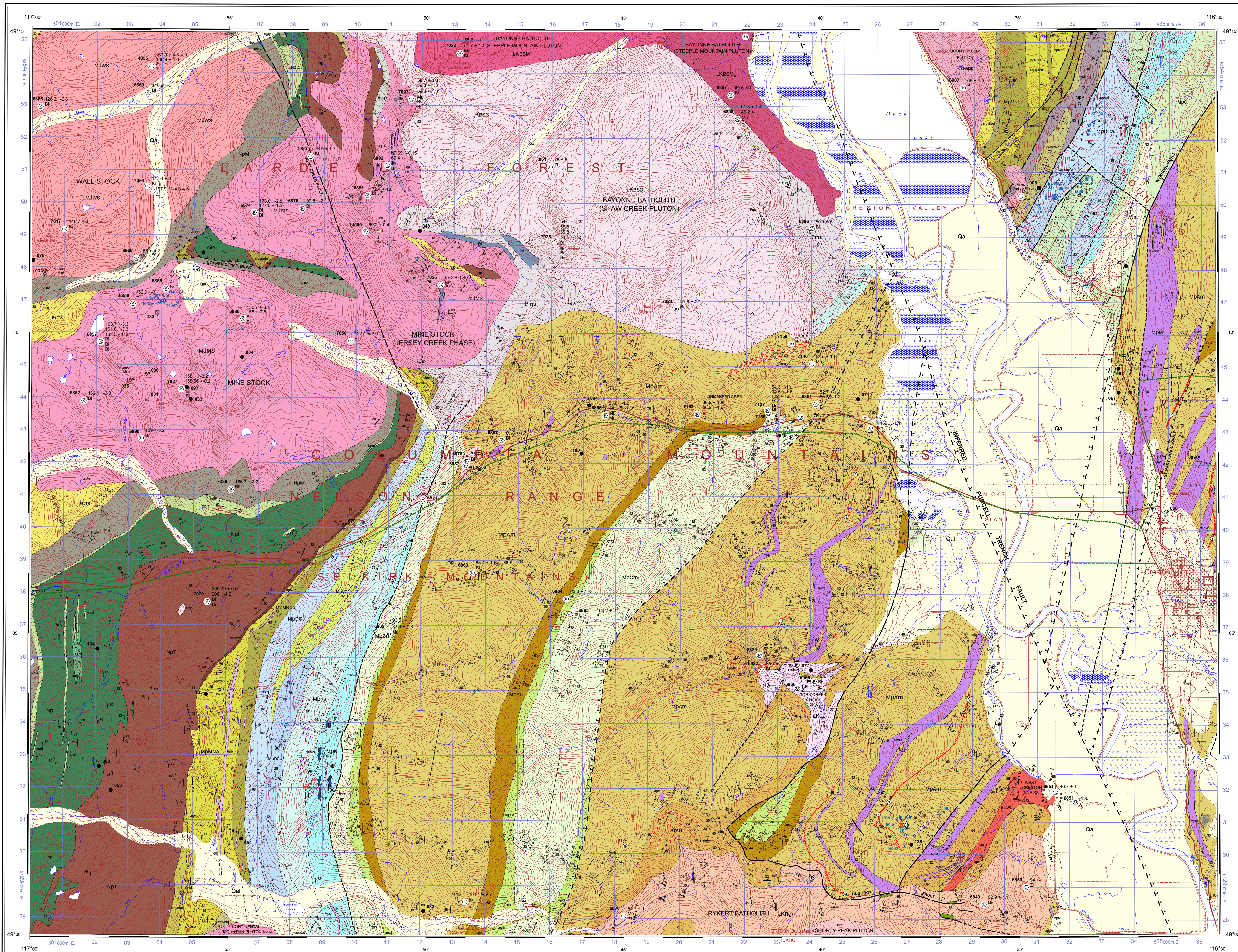
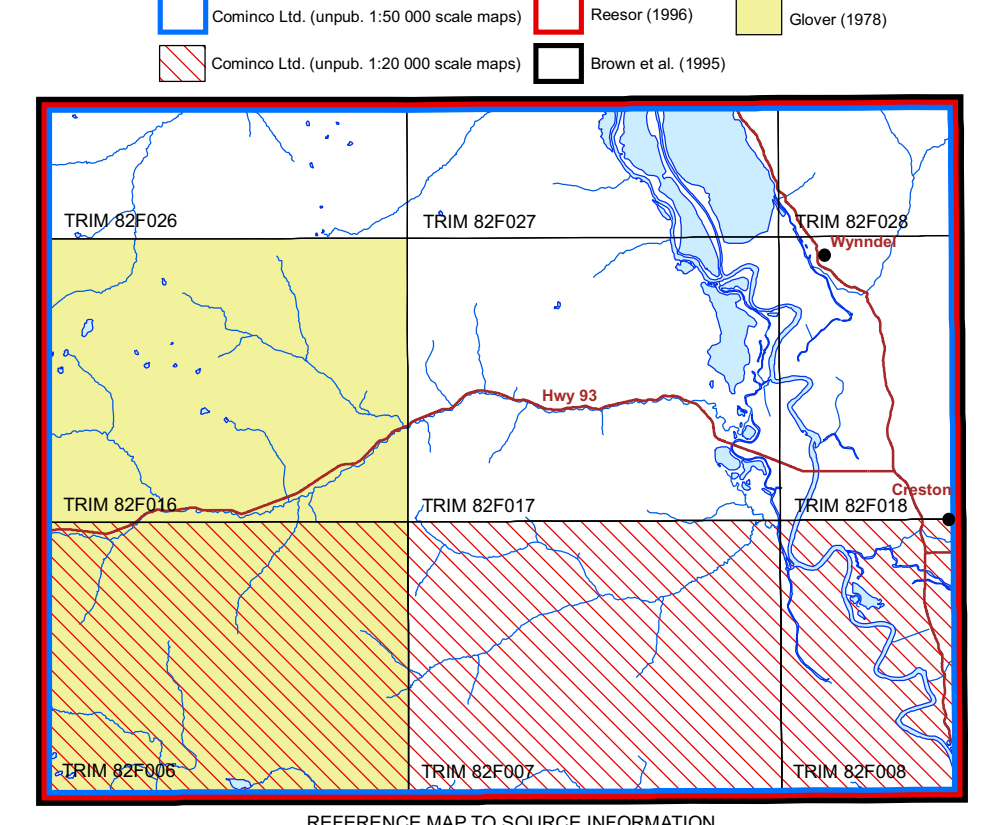
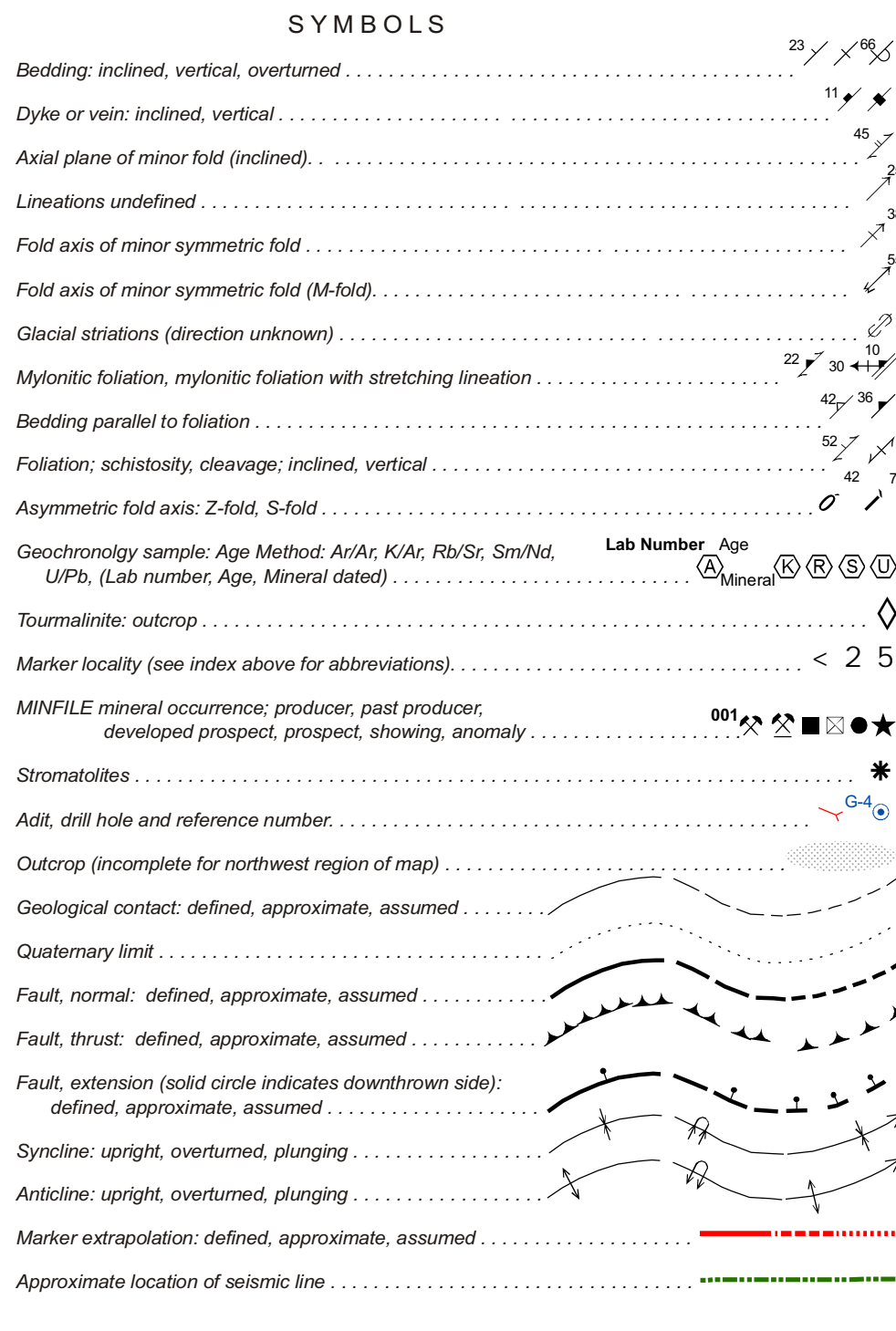
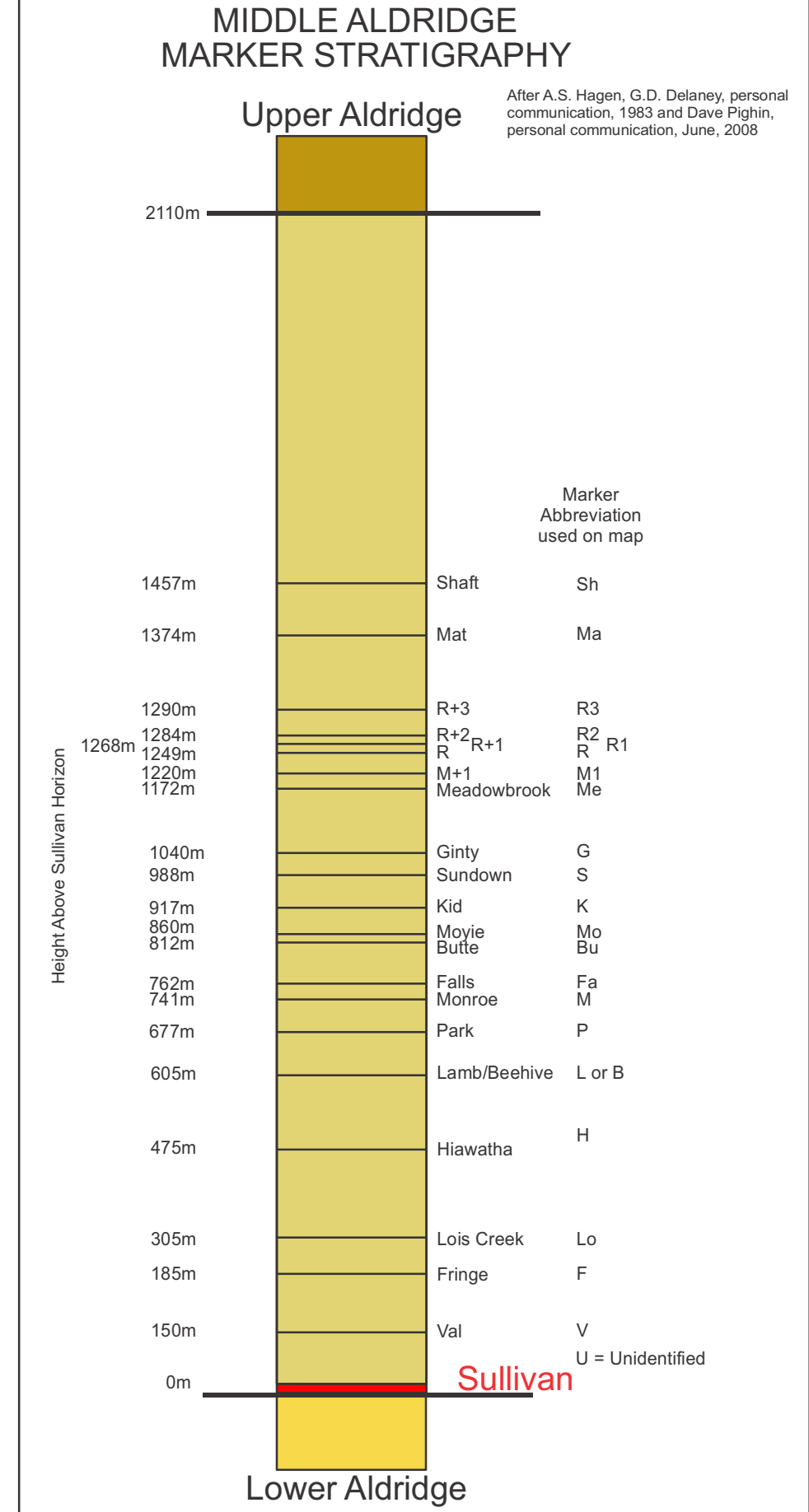


REFERENCES

- Archibald, D.A., Knight, T.E., Armstrong, R.L., and Farnham, E. 1984. Geology and tectonic implications of magmatism and metamorphism, southern Kootenay Arc and ophiolite complexes, southern British Columbia. Part 1: Jurassic to Mid-Cretaceous. Canadian Journal of Earth Sciences, v. 20, p. 567-583.
Brown, D.A., Doughty, T.P., Manton, G., and Stinson, P. 1992. Geology and structure, Bayonne Batholith, southern British Columbia. M.Sc. thesis, University of Victoria, Victoria, British Columbia, 171 p.
Brown, D.A., Doughty, T.P., Manton, G., and Stinson, P. 1993. Geology and structure of the Bayonne Batholith, southern British Columbia. B.C. Ministry of Energy, Mines and Petroleum Resources, Open File 1993-15, scale 1:50,000.
Brown, D.A., Doughty, T.P., Manton, G., and Stinson, P. 1995. Geology of the Creston Map Area, Southeastern British Columbia. B.C. Ministry of Energy, Mines and Petroleum Resources, Geological Factbook 1994, Paper 1995-1, p. 133-155.
Dorville, W.J., Weaver, K.K., and Bell, G.C. 1992. New tectonic data and a preliminary age for volcanics near the base of the Windermere Supergroup, northwestern Washington, U.S.A. Canadian Journal of Earth Sciences, v. 29, p. 1059-1071.
Dougherty, T.P., Brown, D.A., and Archibald, D.A. 1992. Metamorphism of the Creston area, Southeastern British Columbia. B.C. Ministry of Energy, Mines and Petroleum Resources, Open File 1992-5.
Cowell, 1978. Geology of the Summit Creek area, southern Kootenay Arc, British Columbia. Ph.D. thesis, Queen's University, Kingston, Ontario, 163 p.
LaCaille, A.D. 1988. Lithologic, structural and metamorphic histories of the Midge Creek area, southeast British Columbia: implications for tectonic processes in the central Kootenay arc. Ph.D. thesis, Queen's University, Kingston, Ontario, 207 p.
Miller, F.K. 1983. Preliminary geological map of the Smith Peak area, Bonner and Boundary Counties, Idaho. U.S. Geological Survey, Open File Report 83-622.
Miller, F.K. and Whipple, J.W. 1989. The Deer Trail Group: is it part of the Belt Supergroup? In Joseph, N.L. et al. (eds.), Geology Guidebook for Washington and adjacent areas. Washington Division of Geology and Earth Resources, Information Report 3, Geological Survey of Canada Paper 91-2, p. 143-153.
Frankel, R.R. 1982. Mesoproterozoic U-Pb zircon dates from southeastern British Columbia. In Radiogenic Age and Isotope: Status Report 3, Geological Survey of Canada Paper 91-2, p. 143-153.
Reesor, J.E. 1993. Geology, Nelson (East Hill, 82°11', 2, T-10, 15), 16. Geological Survey of Canada, Open File 2721, scale 1:10,000.
Reesor, J.E. 1995. Geology, Kootenay Lake, British Columbia. Geological Survey of Canada, Map 1984A, scale 1:100,000.



Geological compilation by P. Glombick, D.A. Brown, and R.F. MacLeod. Includes title 'GEOLOGY OF THE CRESTON BRITISH COLUMBIA', scale 1:50,000, and a legend for the map units.

LEGEND section detailing geological units and their descriptions. Includes 'LAYERED ROCKS QUATERNARY', 'NEOPROTEROZOIC (HADDYMAN) AND LOWER CAMBRIAN', 'PROTEROZOIC', 'MESOPROTEROZOIC (HELIKAN)', 'VOLCANIC UNIT', 'DUTCH CREEK FORMATION', 'CRESTON FORMATION', and 'MOVIE INTRUSIONS'. Includes a 'MINFILE TABLE' and 'OPEN FILE DOSSIER PUBLIC 6152' information.