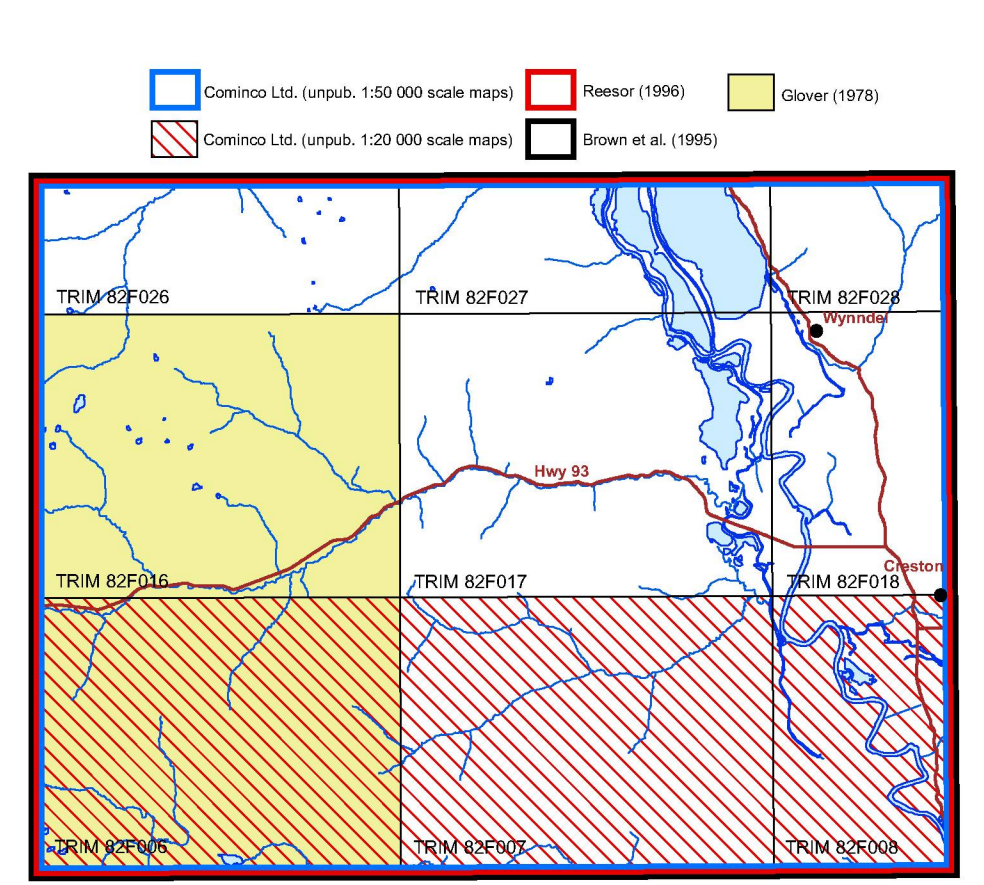
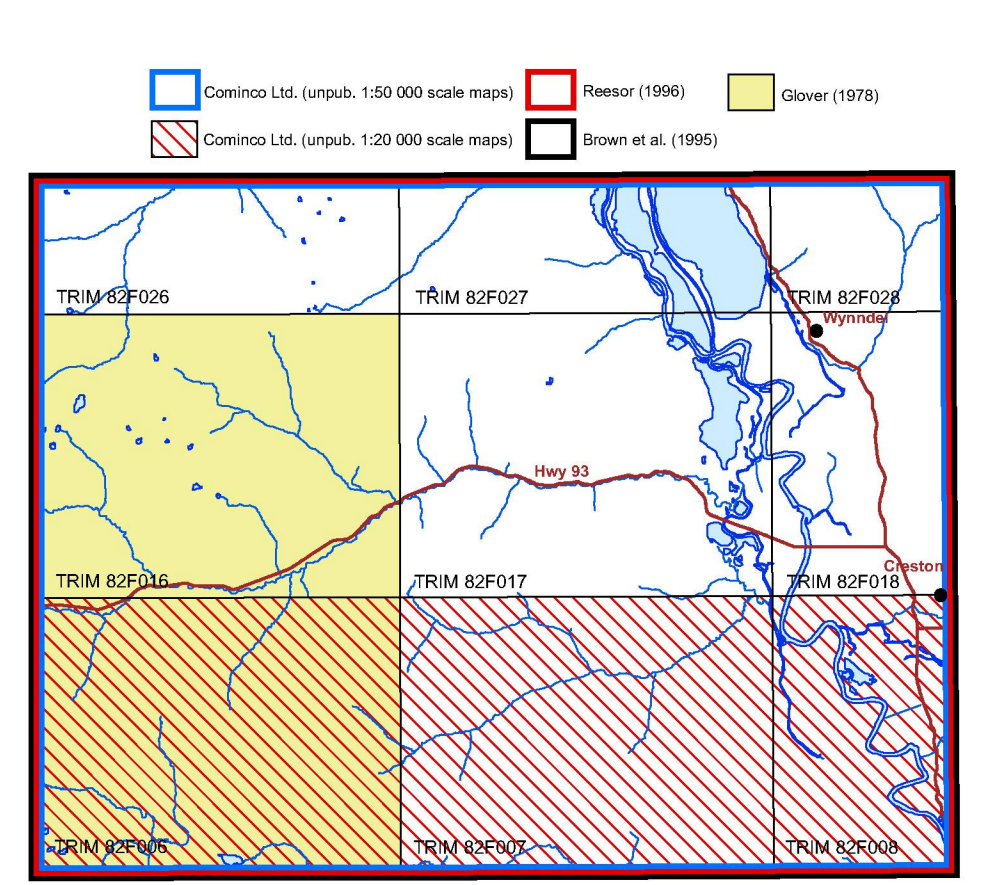
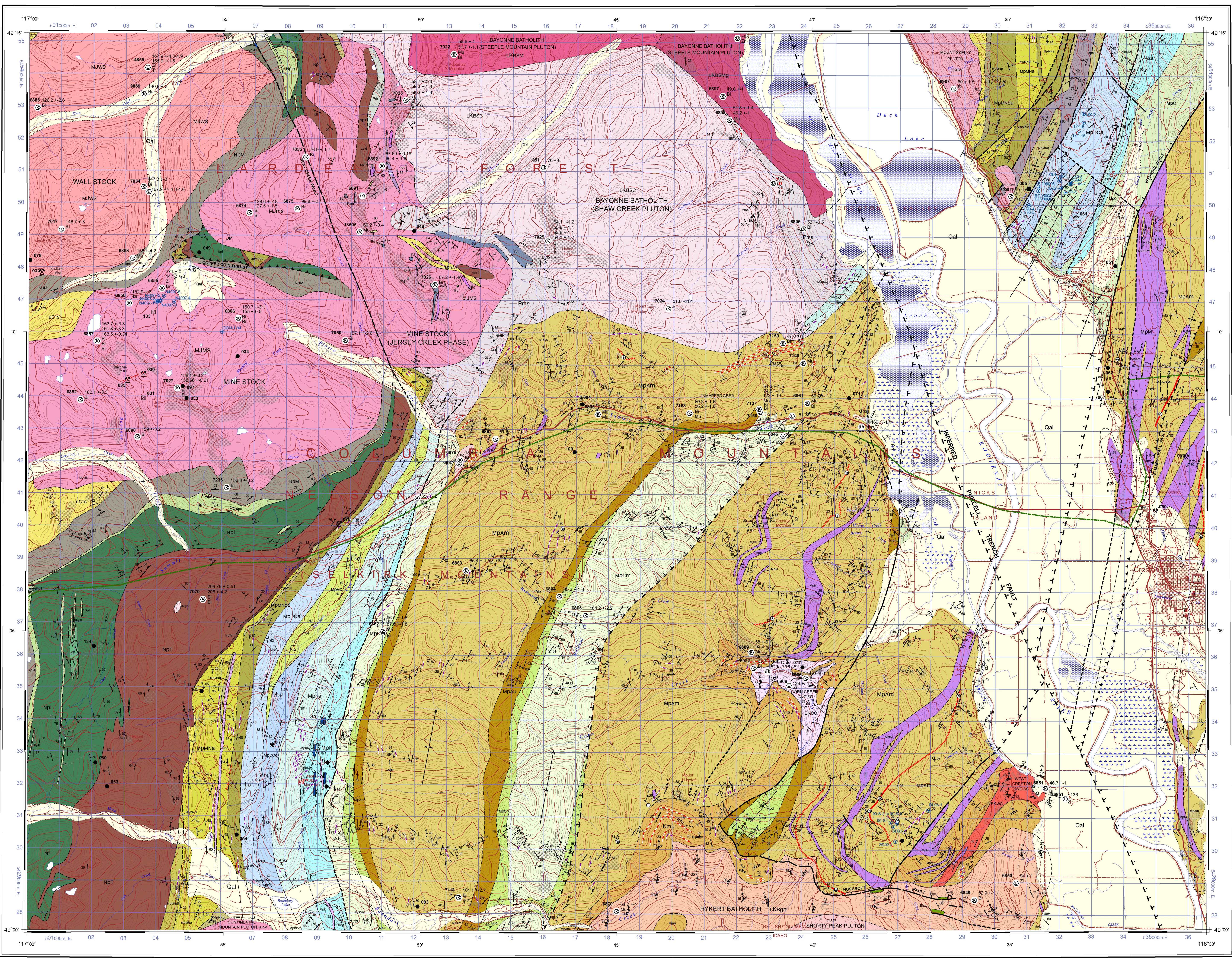
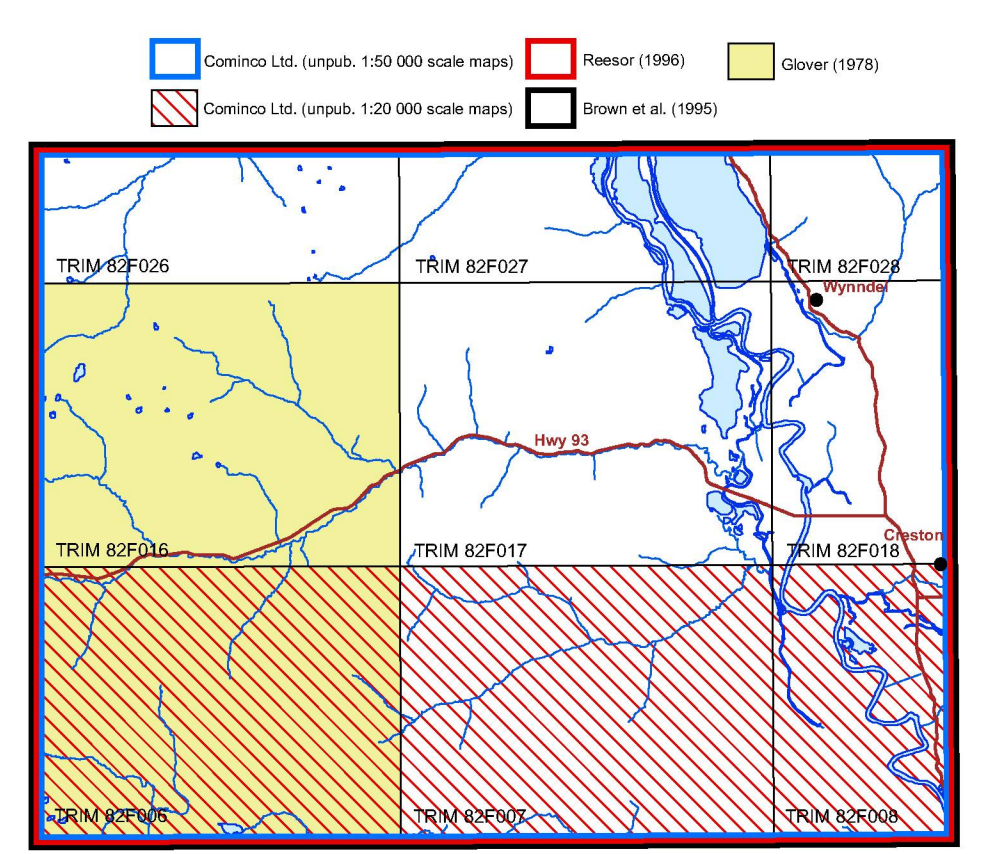
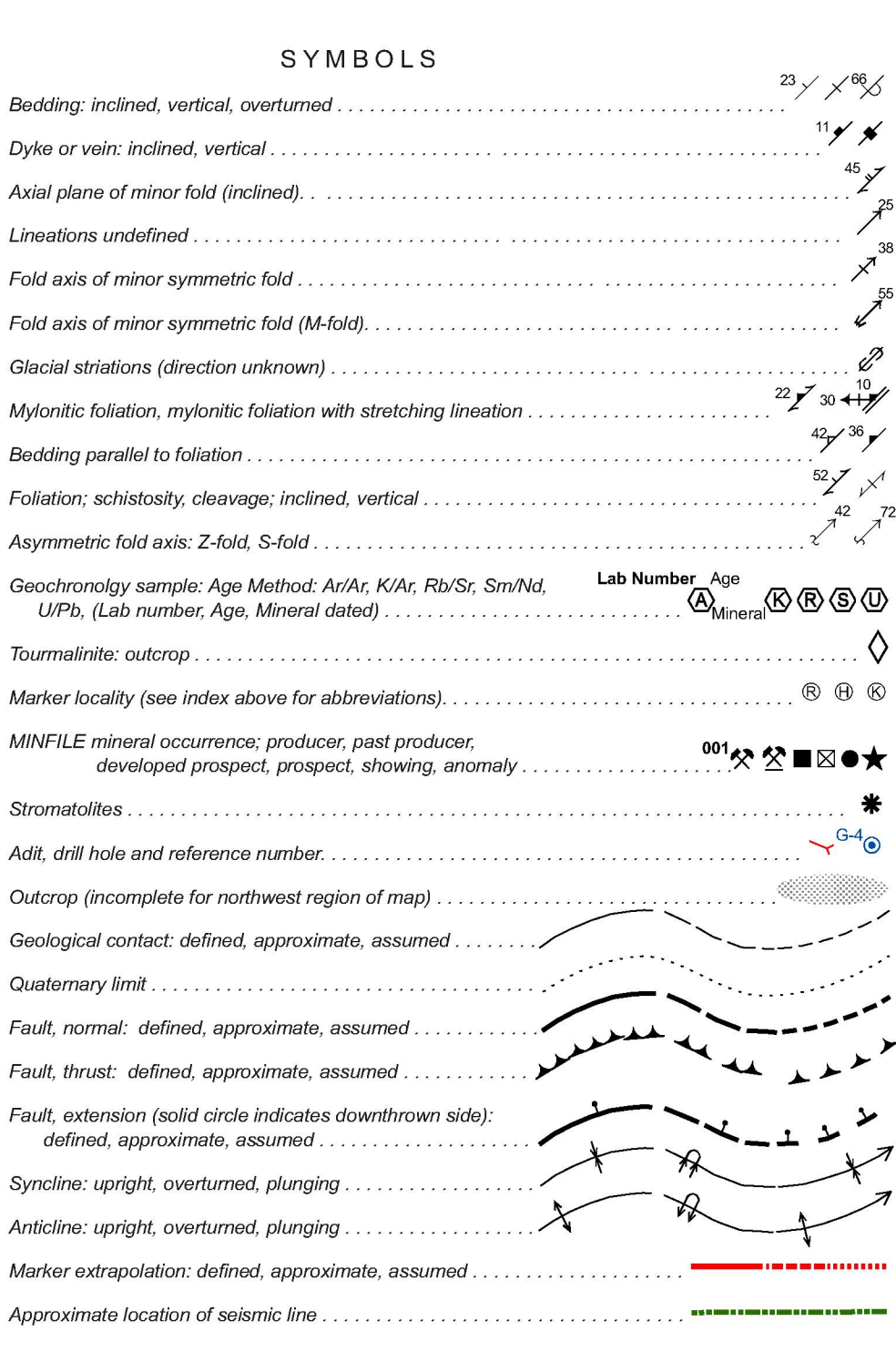
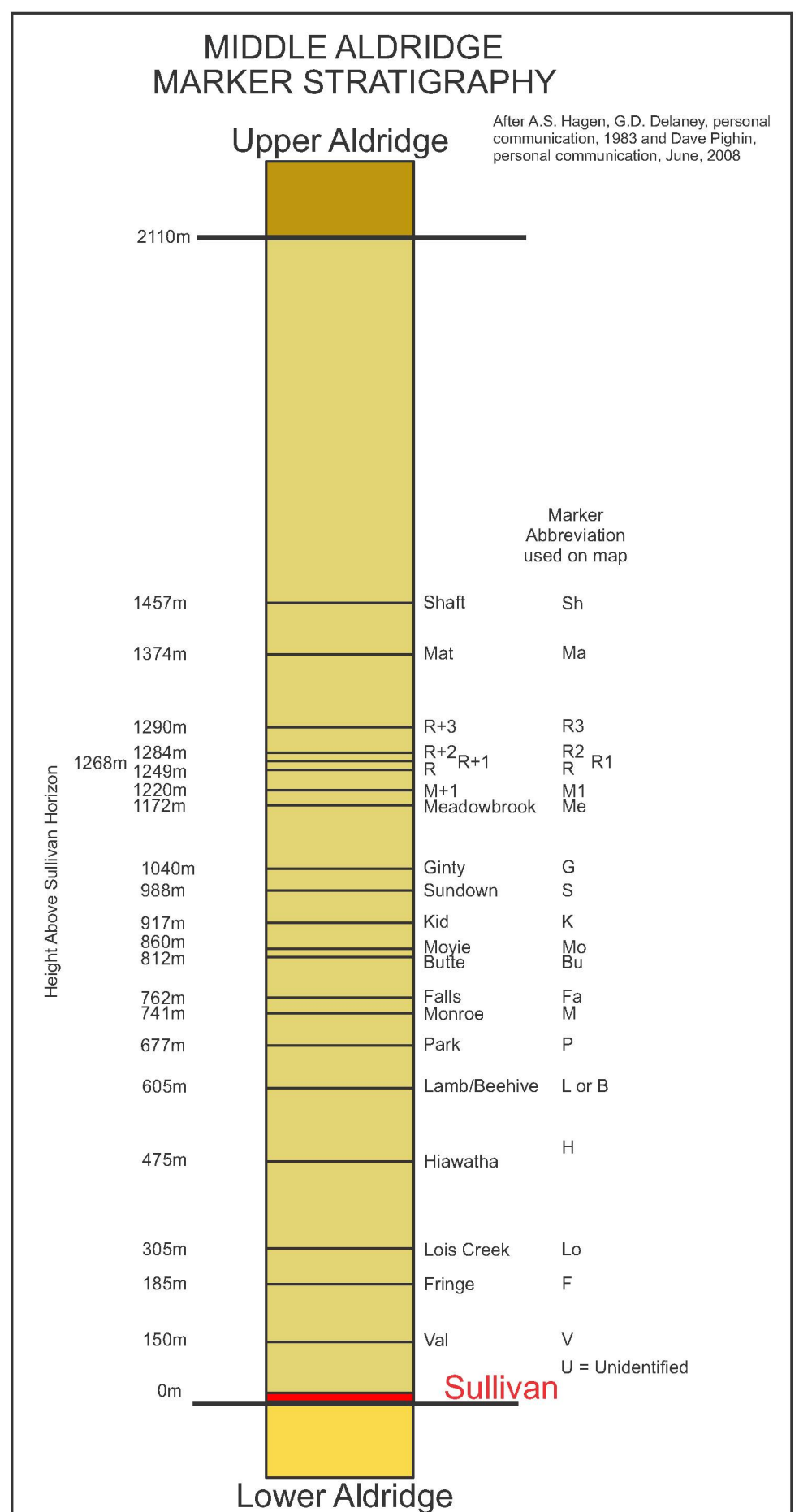


REFERENCES
Aitchison, D.A., Wright, T.E., Armstrong, R.L., and Ferris, C. 1996. Geology and metallogeny of the Aldridge and Metopieau areas, southern Kootenay Arc and surrounding region, southeastern British Columbia. Part I: Jurassic to Mid-Cretaceous. Canadian Journal of Earth Sciences, v. 33, p. 567-583.



LEGEND
LAYERED ROCKS QUATERNARY
FLUVENTICENE TO RECENT
NEOPROTEROZOIC (HADRYAN) AND LOWER CAMBRIAN
THREE SISTERS FORMATION
ECIS
PROTEROZOIC
NEOPROTEROZOIC
WINDHEMER SUPERGROUP
HORSEFEET CREEK GROUP
MOUNT NELSON FORMATION
NpM
NpMu
NpMm
IRENE FORMATION
NpI
NpIt
NpIc
NpIl
TOBY FORMATION
NpT
NpTc
MESOPROTEROZOIC (HELIKAN)
PURCELL SUPERGROUP
MOUNT NELSON FORMATION
MpMn
MpMns
MpMnc
MpMnd
MpMna
MpMnq
MpMnd
VOLCANIC UNIT
MpV
DUTCH CREEK FORMATION (LaFrance Creek Group of Reesor, 1983)
MpDc
MpDca
MpDcd
MpDca
CRESTON FORMATION
MpC
MpCm
MpCi
MINIFILE TABLE
NAME, LOCATION, SHOWING, COORDINATES, POLYGENIC UNIT, STRATIGRAPHIC POSITION, LITHOLOGY, COMMENTS

OPEN FILE
DOSSIER PUBLIC
6152
2011
Open file no. 6152
This file no. 6152
has been prepared
in accordance with
the provisions of the
Access to Information
Act / en vertu de la
Loi sur l'accès à l'information