

Figure 4. Podkoms in sediment in Passamaquoddy Bay, New Brunswick.

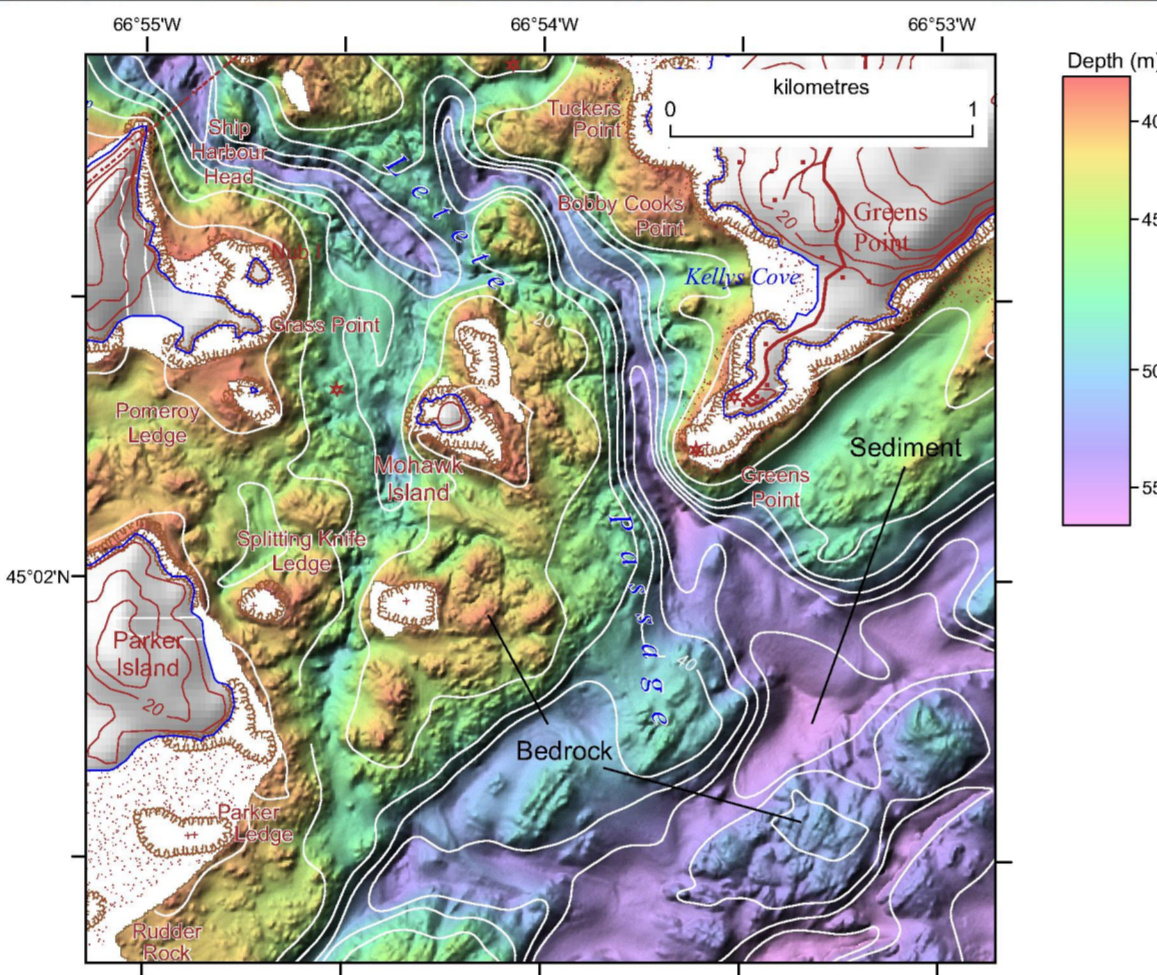


Figure 3. Little Passage showing bedrock-dominated seabed. Sediment has accumulated in basins.

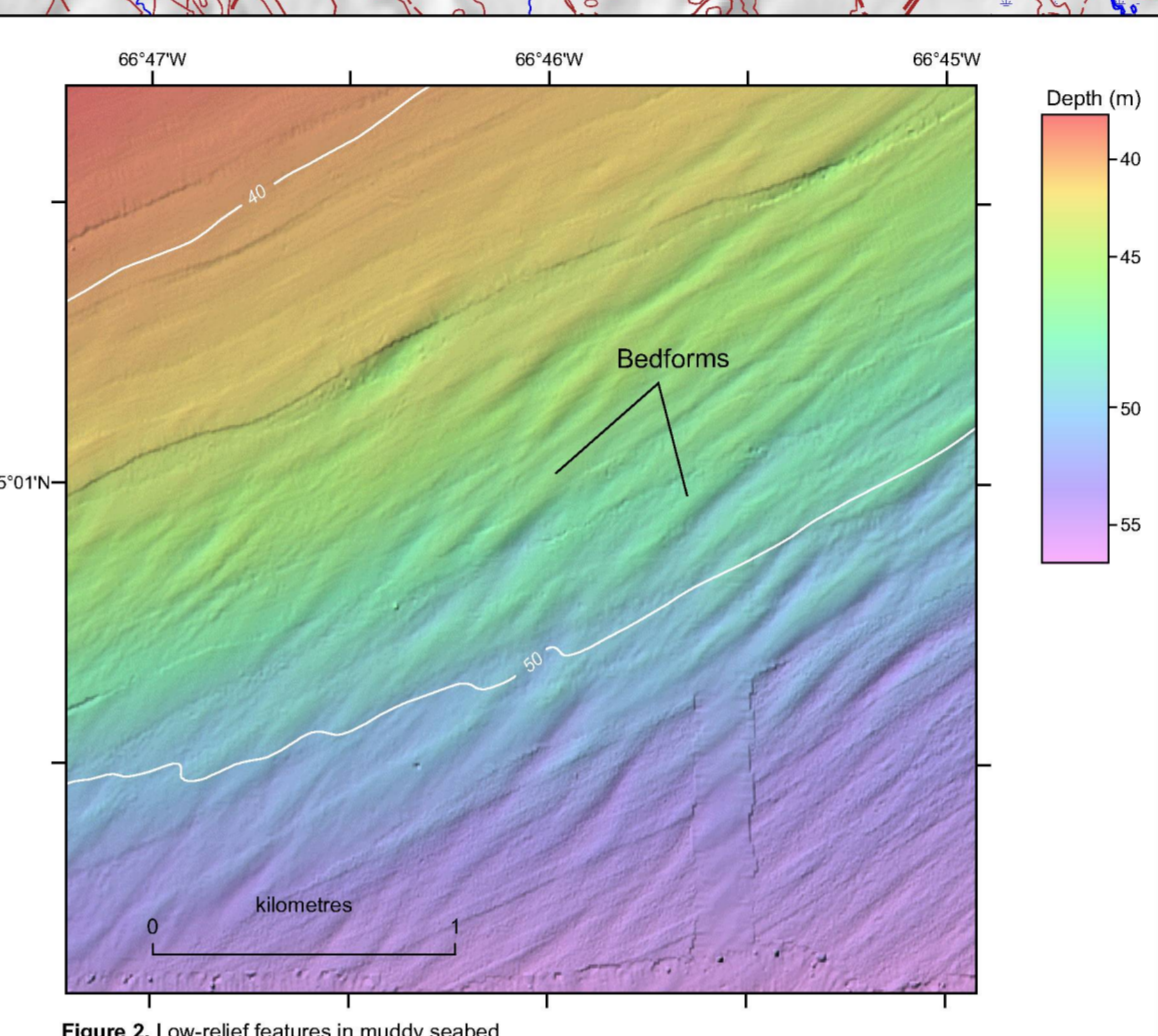


Figure 2. Low-volts features in muddy seabed.

DESCRIPTIVE NOTES

INTRODUCTION
The Bay of Fundy, located on the east coast of Canada between the provinces of Nova Scotia and New Brunswick (Fig. 1), is a shallow, funnel-shaped bay...

REFERENCES

Ames, C.L., and Zeller, B.A., 1985. The effect of changes in tidal range on a subtidal meadow...
Ames, C.L., and Zeller, B.A., 1991. The geologic evolution of the Bay of Fundy...

BATHYMETRIC DATA DISPLAY

The bathymetric data were presented at 5 m per grid horizontal resolution. The shaded-relief image is presented with a vertical exaggeration of the bathymetry of 10 times and an artificial illumination of the relief by a sun positioned 45 degrees above the horizon...

BAY OF FUNDY GEOMORPHOLOGY

The Bay of Fundy is a shallow, funnel-shaped bay, 155 km long at its entrance and nearly 85 km wide across its widest part. The Bay of Fundy is situated within the Carboniferous-Permian tectonic zone...

Geological history

Geological history has been revealed through mapping of the Bay of Fundy and reflects the geological history of the region. The Bay of Fundy is situated within the Carboniferous-Permian tectonic zone...

Geomorphology of this map

A series of dated maps at a scale of 1:25 000 (Fig. 2-4) highlights geomorphological features in northern Bay of Fundy and Passamaquoddy Bay, New Brunswick. For each of these dated maps, the colour-coding shows the topographic elevation and differ from the 1:50 000 map sheet colour-coding values.

Geological history

Geological history has been revealed through mapping of the Bay of Fundy and reflects the geological history of the region. The Bay of Fundy is situated within the Carboniferous-Permian tectonic zone...

Geomorphology of this map

A series of dated maps at a scale of 1:25 000 (Fig. 2-4) highlights geomorphological features in northern Bay of Fundy and Passamaquoddy Bay, New Brunswick. For each of these dated maps, the colour-coding shows the topographic elevation and differ from the 1:50 000 map sheet colour-coding values.

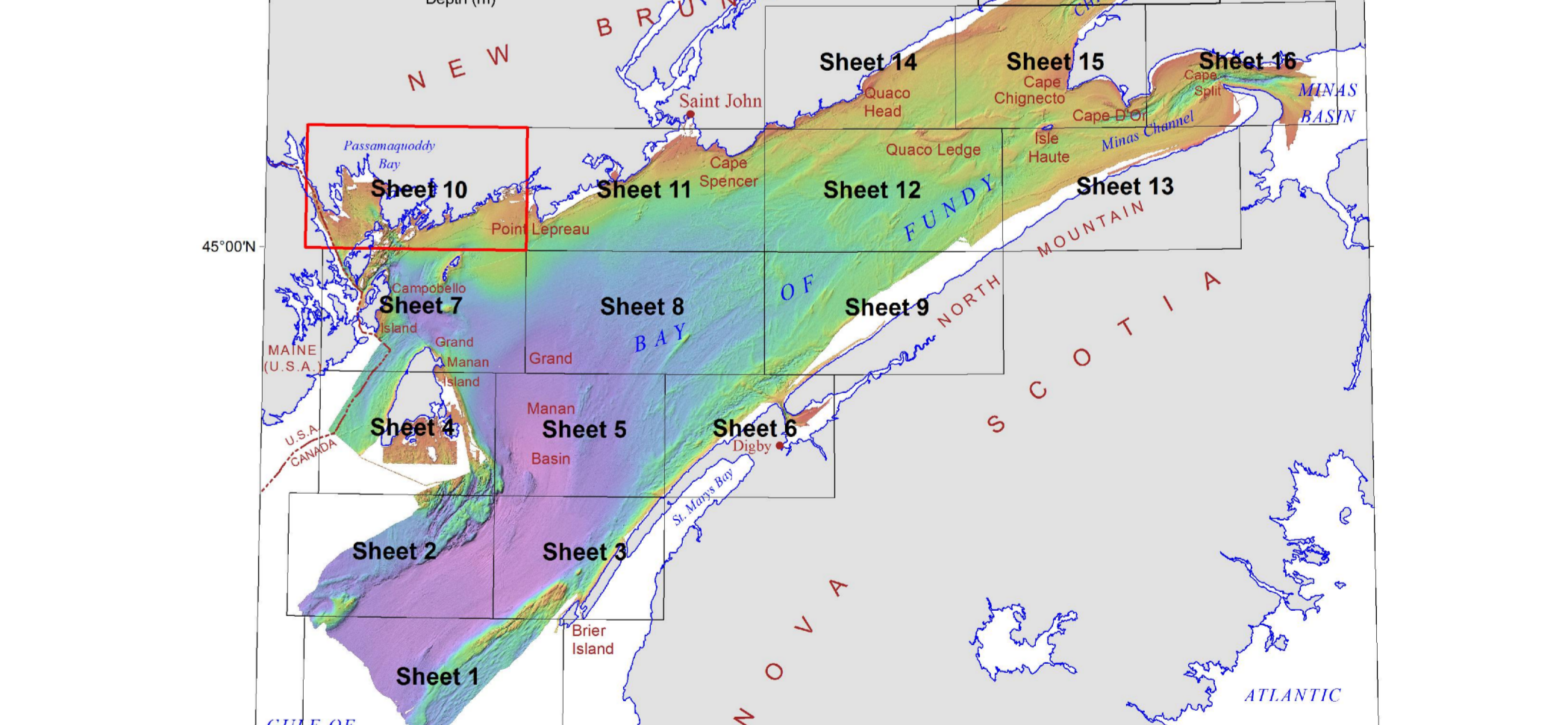


Figure 1. Location map showing sixteen 1:50 000 map sheets covering the Bay of Fundy. Sheet 10 (outlined by a box) is in northwestern Bay of Fundy including Passamaquoddy Bay.

MAP 2183A SHADED SEAFLOOR RELIEF BAY OF FUNDY, SHEET 10 OFFSHORE NOVA SCOTIA-NEW BRUNSWICK CANADA-UNITED STATES OF AMERICA. Includes scale, north arrow, and production information.