

Map 2180A: SHADED SEAFLOOR RELIEF BAY OF FUNDY, SHEET 7 OFFSHORE NOVA SCOTIA-NEW BRUNSWICK CANADA-UNITED STATES OF AMERICA. Includes scale, projection, and author information.

DESCRIPTIVE NOTES

INTRODUCTION: The Bay of Fundy, located on the east coast of Canada between the provinces of Nova Scotia and New Brunswick...

MULTIBEAM BATHYMETRY DATA COLLECTION: Multibeam sonar water depth data were collected by the Canadian Hydrographic Service...

BATHYMETRIC DATA DISPLAY: The multibeam sonar bathymetric data are presented at 5 m per pixel horizontal resolution. The shaded-relief image is presented with a vertical exaggeration of the bathymetry of 10 times...

BAY OF FUNDY GEOMORPHOLOGY: The Bay of Fundy is a southwest-trending funnel-shaped bay, 155 km long that is 70 km wide at its entrance...

Geological history: Geomorphological features revealed through mapping of the Bay of Fundy seafloor reflect the geological history of the region...

Geomorphology of this map: A series of shaded maps at a scale of 1:25 000 (Fig. 2-6) highlights Bay of Fundy geomorphological features...

ACKNOWLEDGMENTS: B. MacCowan, M. Lamplugh, and J. Griffin of the Canadian Hydrographic Service (CHS) organized the multibeam-sonar bathymetric survey of the Bay of Fundy...

REFERENCES: Aron, C.L., and Zaitis, B.A., 1985. The effect of changes in ice load on a subglacial macroite sequence...

REFERENCES (continued): Aron, C.L., Bevelley, D.E., Dobson, G.R., Dyer, R.W., MacCowan, B.A., and Riek, M.J., 1980. Geomorphology and sedimentology of the Bay of Fundy...

REFERENCES (continued): Aron, C.L., Tse, K.T., and Zaitis, B.A., 1981. The post-glacial evolution of Chignecto Bay...

REFERENCES (continued): Blakey, R.S., 2008. Tides and the earth-moon system. In: Ocean waves handbook...

REFERENCES (continued): Canadian Hydrographic Service, 1967. Natural Resource Chart 15136-A, bathymetry...

REFERENCES (continued): Canadian Hydrographic Service, 1974a. Natural Resource Chart 15144-A, bathymetry...

REFERENCES (continued): Canadian Hydrographic Service, 1974b. Natural Resource Chart 15146-A, bathymetry...

REFERENCES (continued): Canadian Hydrographic Service, 1974c. Natural Resource Chart 15145-A, bathymetry...

REFERENCES (continued): Canadian Hydrographic Service, 1981. Atlas of tidal currents, Bay of Fundy and Gulf of Maine...

REFERENCES (continued): Chivers, I., Hughes Clarke, J.C., Hogg, S., Santos, M., Lamplugh, M., Griffin, J., and Parrott, D.R., 2008. Using geophysical remote sensing to evaluate the stability of geomorphological features...

REFERENCES (continued): Church, A.L., 2005. The sea level rise and the Bay of Fundy, based on an analysis of the historical data...

REFERENCES (continued): Courtney, R.C., and Shaw, J., 2006. Multibeam bathymetry and backscatter imaging on the Canadian continental shelf...

REFERENCES (continued): Cooley, D.G., 1962. Mohole maps, Nova Scotia. Geological Survey of Canada, Memoir 225, 67 p.

REFERENCES (continued): Dyer, K.R., and Hurrell, D.A., 1999. The origin, classification and modeling of sand bars and ridges...

REFERENCES (continued): Dyer, K.R., and King, L.H., 1981. Anomalous stability of the bathymetry of the Grand Manan Basin...

REFERENCES (continued): Gearing, J.R., 1962. The evolution of the Bay of Fundy and its relationship to an estuarine study...

REFERENCES (continued): Gillingham, J.W., 1964. Physiography of Nova Scotia. Geological Survey of Canada, Memoir 145, 179p.

REFERENCES (continued): Goff, G.C., and Coakley, P.J., and Robinson, C., 1982. Observations on the geological evolution of the western part of the Canadian Basin...

REFERENCES (continued): Goff, G.C., 1970. Basins: coastal subsidence of the Maritime Provinces. Canadian Journal of Earth and Planetary Sciences, 7, 1-14.

REFERENCES (continued): Greenberg, D.A., 1989. The evolution of the Bay of Fundy: understanding the dynamics of the Bay of Fundy and Gulf of Maine...

REFERENCES (continued): Greenberg, D.A., Parrott, D.R., Dobson, G.R., and Goff, G.C., 1997. The geological evolution of the Bay of Fundy: Chapter 2 in Bay of Fundy basin: a scientific overview...

REFERENCES (continued): Hansen, T., 2003. Western Scotian Shelf: tectonic and Quaternary development of the western Scotian Shelf...

REFERENCES (continued): King, L.H., and Fayer, G.B., 1968. Wisconsin glacialite of the Atlantic continental shelf of southeast Canada. Geological Survey of Canada, Bulletin 983, 72p.

REFERENCES (continued): O'Hilly, C.L., Robinson, C., and Robinson, C., 1982. How are the events related? In: 2008 in review. Section history of Oceanography annual report...

REFERENCES

Aron, C.L., and Zaitis, B.A., 1985. The effect of changes in ice load on a subglacial macroite sequence...

Aron, C.L., Bevelley, D.E., Dobson, G.R., Dyer, R.W., MacCowan, B.A., and Riek, M.J., 1980. Geomorphology and sedimentology of the Bay of Fundy...

Aron, C.L., Tse, K.T., and Zaitis, B.A., 1981. The post-glacial evolution of Chignecto Bay...

Blakey, R.S., 2008. Tides and the earth-moon system. In: Ocean waves handbook...

Canadian Hydrographic Service, 1967. Natural Resource Chart 15136-A, bathymetry...

Canadian Hydrographic Service, 1974a. Natural Resource Chart 15144-A, bathymetry...

Canadian Hydrographic Service, 1974b. Natural Resource Chart 15146-A, bathymetry...

Canadian Hydrographic Service, 1974c. Natural Resource Chart 15145-A, bathymetry...

Canadian Hydrographic Service, 1981. Atlas of tidal currents, Bay of Fundy and Gulf of Maine...

Chivers, I., Hughes Clarke, J.C., Hogg, S., Santos, M., Lamplugh, M., Griffin, J., and Parrott, D.R., 2008. Using geophysical remote sensing to evaluate the stability of geomorphological features...

Church, A.L., 2005. The sea level rise and the Bay of Fundy, based on an analysis of the historical data...

Courtney, R.C., and Shaw, J., 2006. Multibeam bathymetry and backscatter imaging on the Canadian continental shelf...

Cooley, D.G., 1962. Mohole maps, Nova Scotia. Geological Survey of Canada, Memoir 225, 67 p.

Dyer, K.R., and Hurrell, D.A., 1999. The origin, classification and modeling of sand bars and ridges...

Dyer, K.R., and King, L.H., 1981. Anomalous stability of the bathymetry of the Grand Manan Basin...

Gearing, J.R., 1962. The evolution of the Bay of Fundy and its relationship to an estuarine study...

Gillingham, J.W., 1964. Physiography of Nova Scotia. Geological Survey of Canada, Memoir 145, 179p.

Goff, G.C., and Coakley, P.J., and Robinson, C., 1982. Observations on the geological evolution of the western part of the Canadian Basin...

Goff, G.C., 1970. Basins: coastal subsidence of the Maritime Provinces. Canadian Journal of Earth and Planetary Sciences, 7, 1-14.

Greenberg, D.A., 1989. The evolution of the Bay of Fundy: understanding the dynamics of the Bay of Fundy and Gulf of Maine...

Greenberg, D.A., Parrott, D.R., Dobson, G.R., and Goff, G.C., 1997. The geological evolution of the Bay of Fundy: Chapter 2 in Bay of Fundy basin: a scientific overview...

Hansen, T., 2003. Western Scotian Shelf: tectonic and Quaternary development of the western Scotian Shelf...

King, L.H., and Fayer, G.B., 1968. Wisconsin glacialite of the Atlantic continental shelf of southeast Canada. Geological Survey of Canada, Bulletin 983, 72p.

O'Hilly, C.L., Robinson, C., and Robinson, C., 1982. How are the events related? In: 2008 in review. Section history of Oceanography annual report...

O'Hilly, C.L., Robinson, C., and Robinson, C., 1982. How are the events related? In: 2008 in review. Section history of Oceanography annual report...

Shaw, J., Gove, P., and Courtney, R.C., 2002. Paleogeography of Atlantic Canada: 130-kyr. Quaternary Science Reviews, 21, 1885-1898.

Shaw, J., Piper, D.J.W., Fayer, G.B., King, L., Tse, K.T., Bell, T., Bennett, M., and Liverton, D.E., 2006. A cross-section of the geological evolution of the Bay of Fundy basin...

Wade, J.A., Brown, D., Tawana, A., and Parsons, B.A., 1996. The Tertiary-Quaternary Fundy Basin, eastern Canada: regional setting, stratigraphy and hydrocarbon potential. Marine Geology, 132, 189-201.

Waters, M.A., Kennedy, J.J., and Robinson, C., 1972. The depositional environment in the western part of the Canadian Basin in Canada. In: A. P. R. and R. W. Douglas, Geological Association of Canada, Special Paper 13, 1-102.

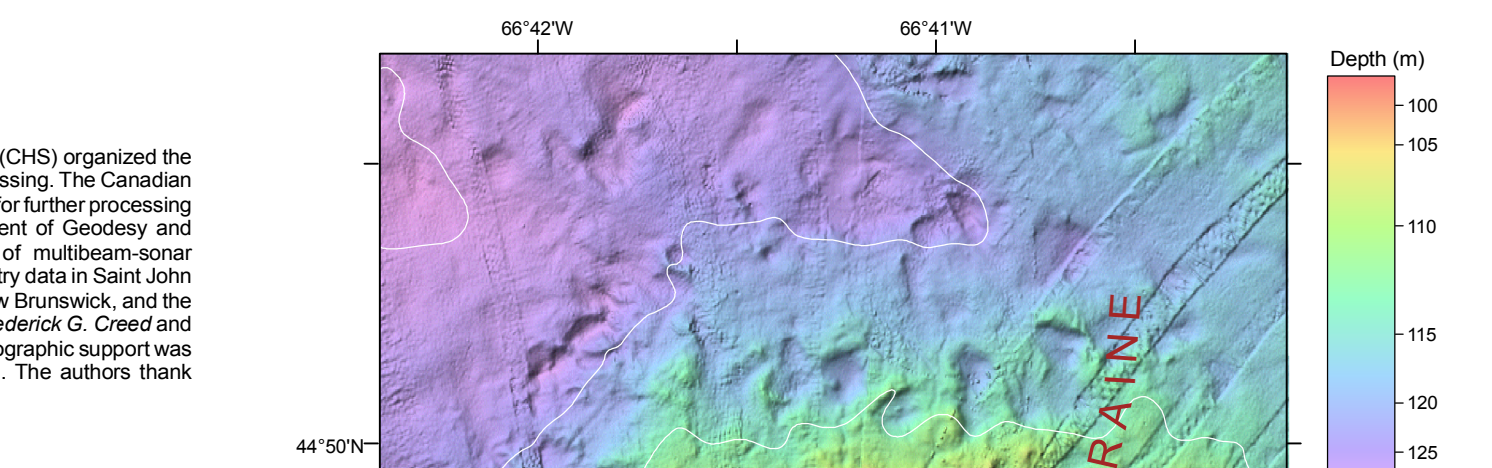


Figure 1. Isobath plot on Owen moraine north of Grand Manan Island.

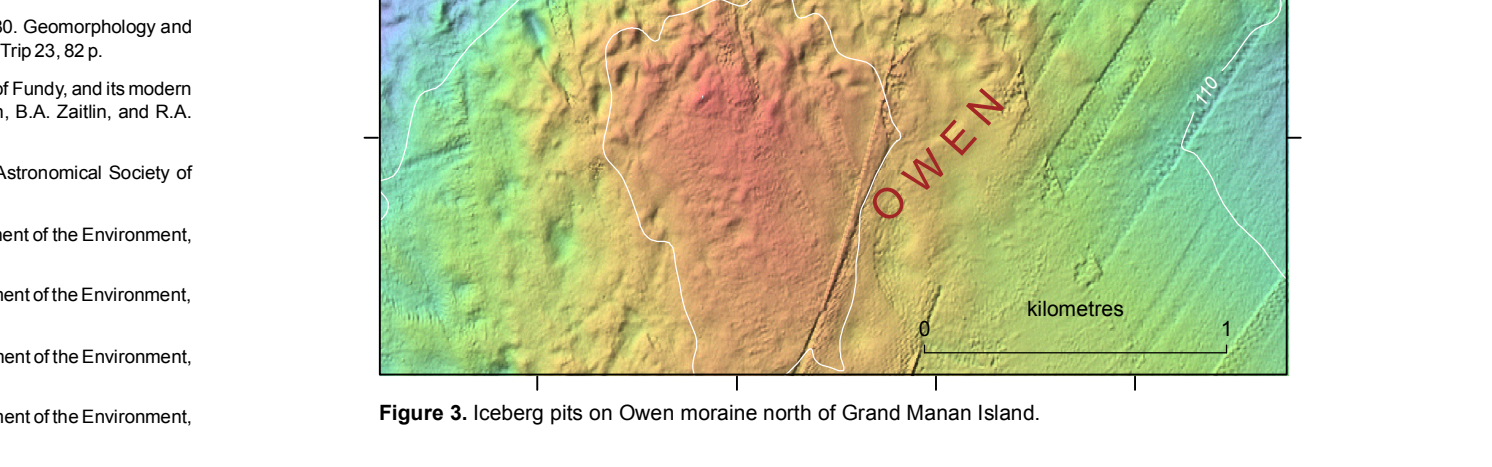


Figure 2. Anomalous pattern of bottom ridges southeast of The Wolves.

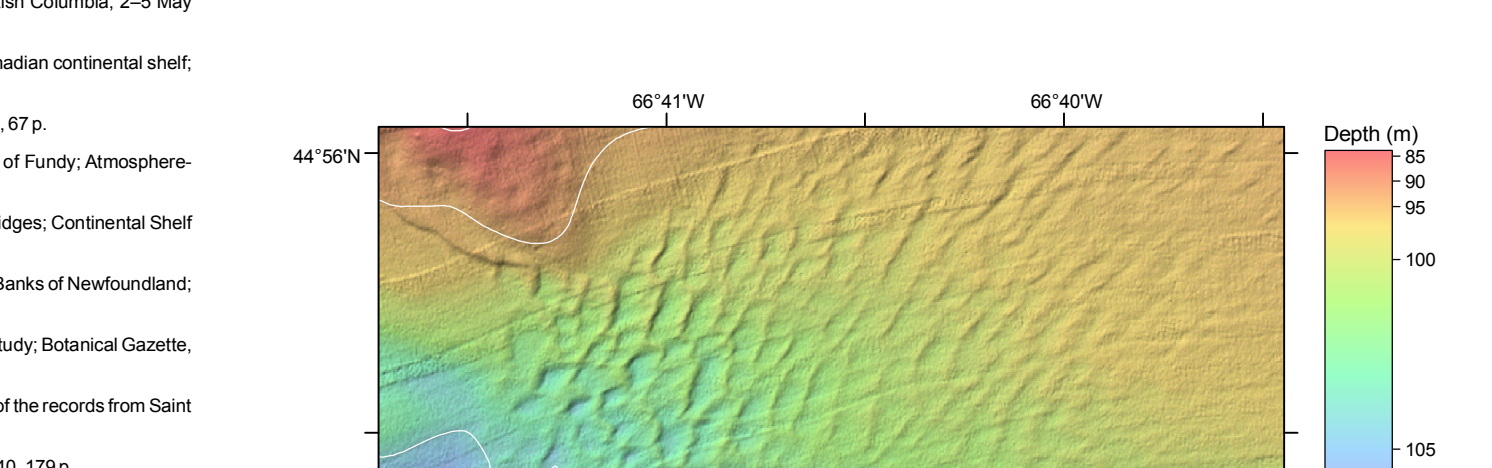


Figure 3. Oval mounds east of The Wolves.

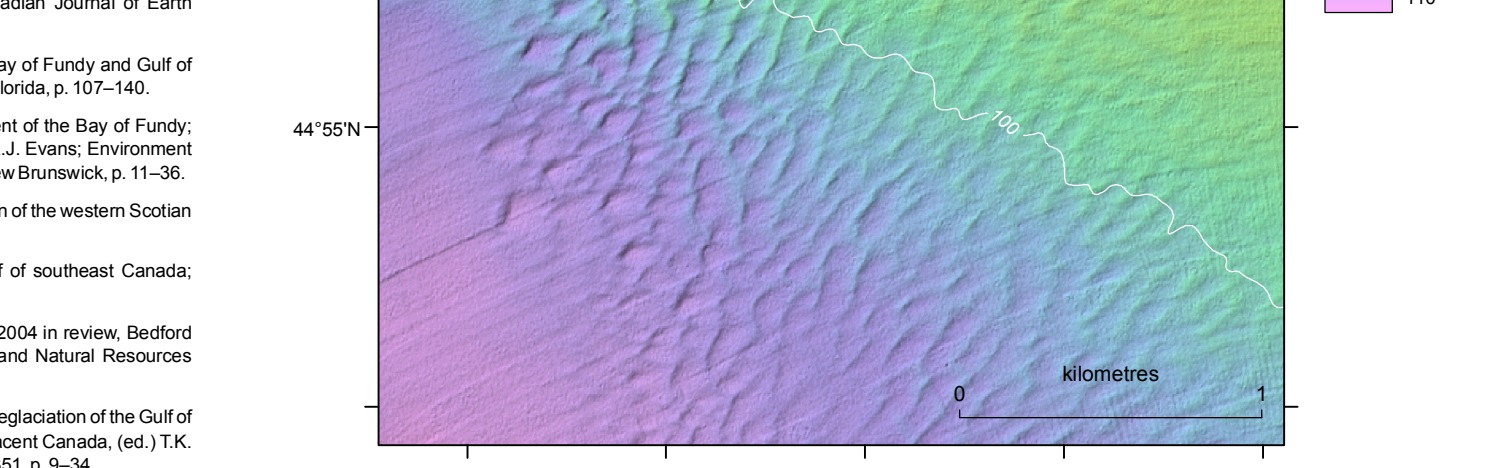


Figure 4. Scoured seabed with bedforms at the approaches to Head Harbour Passage.

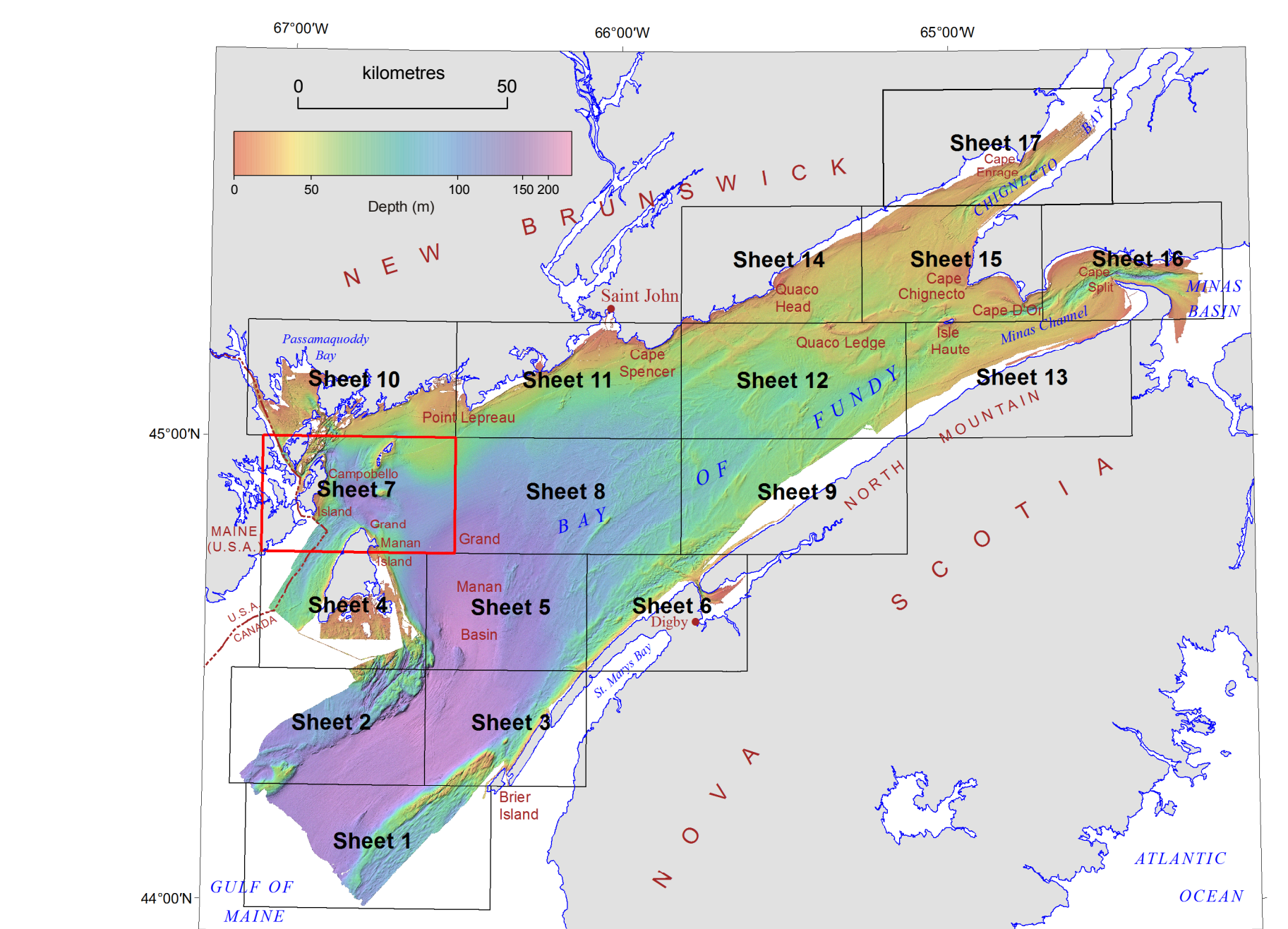


Figure 1. Location map showing seventeen 1:50 000 map sheets covering the Bay of Fundy. Sheet 7 (outlined by red box) is western Bay of Fundy between Grand Manan Island to the south and Passamaquoddy Bay to the north.