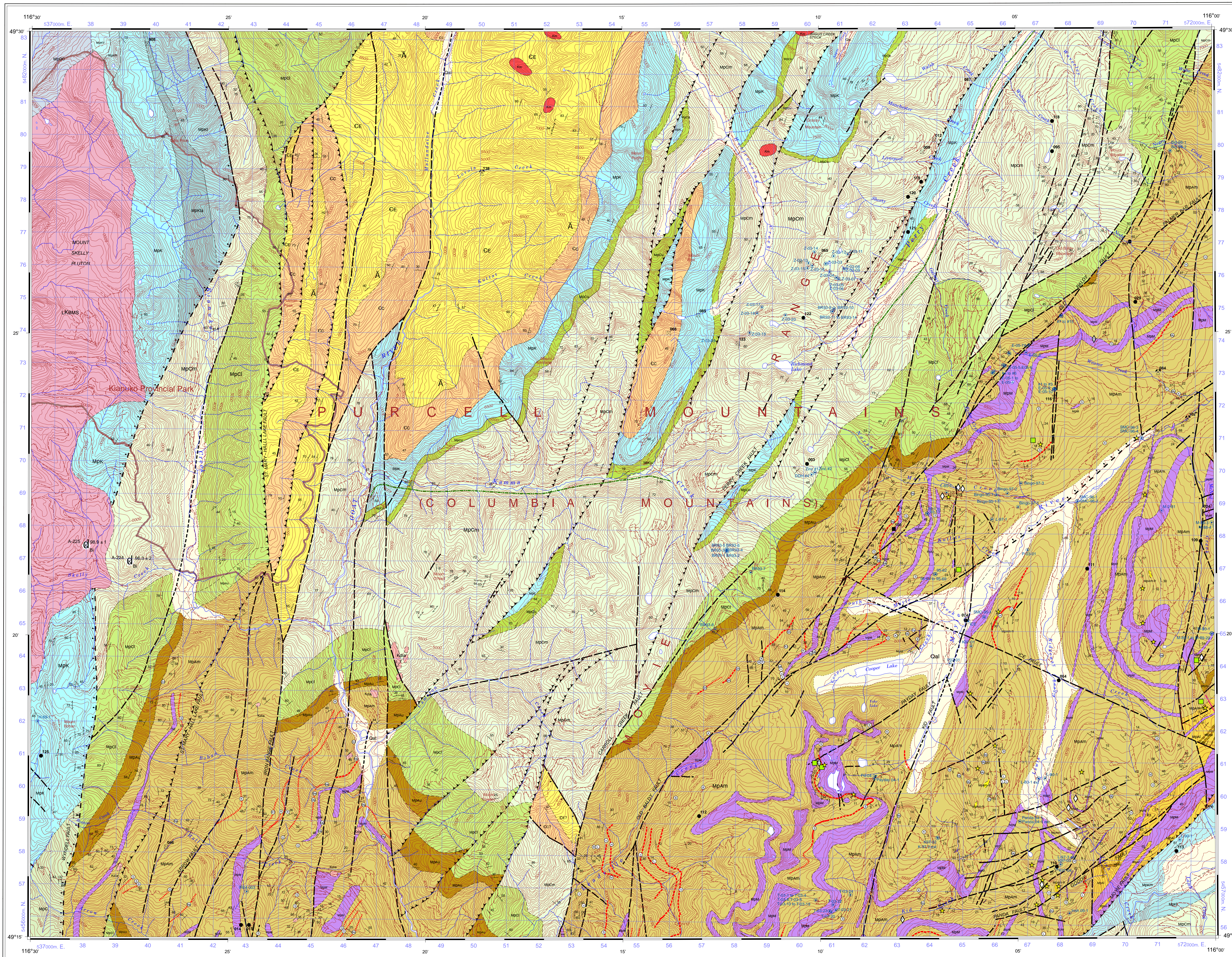
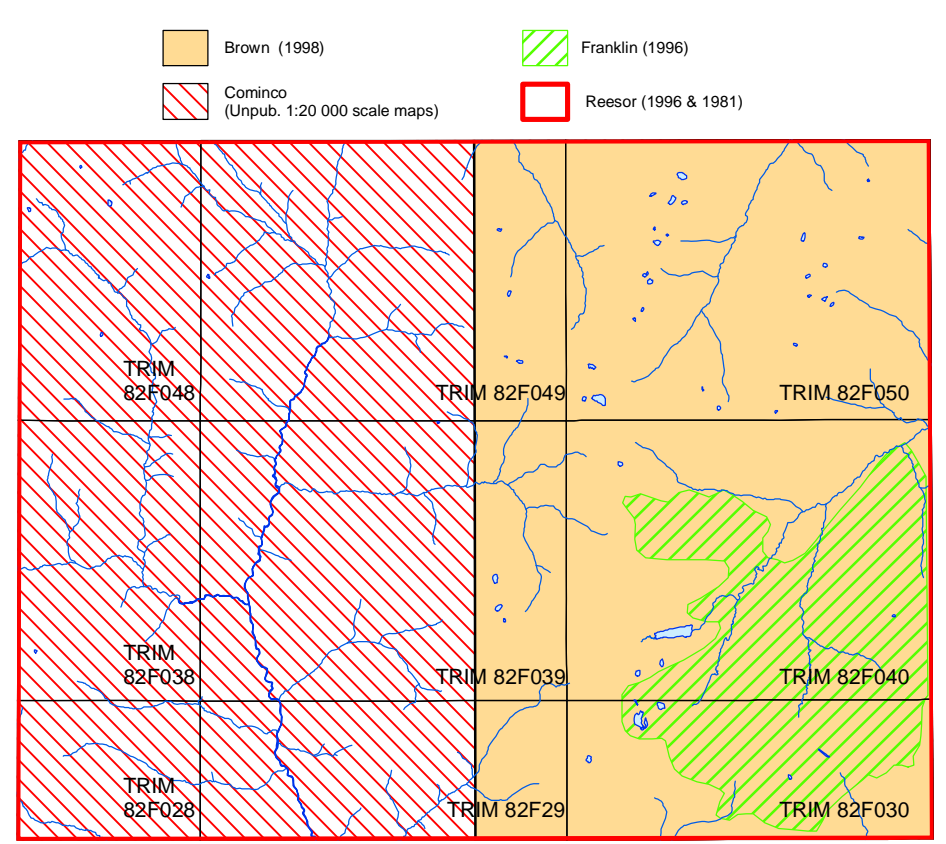
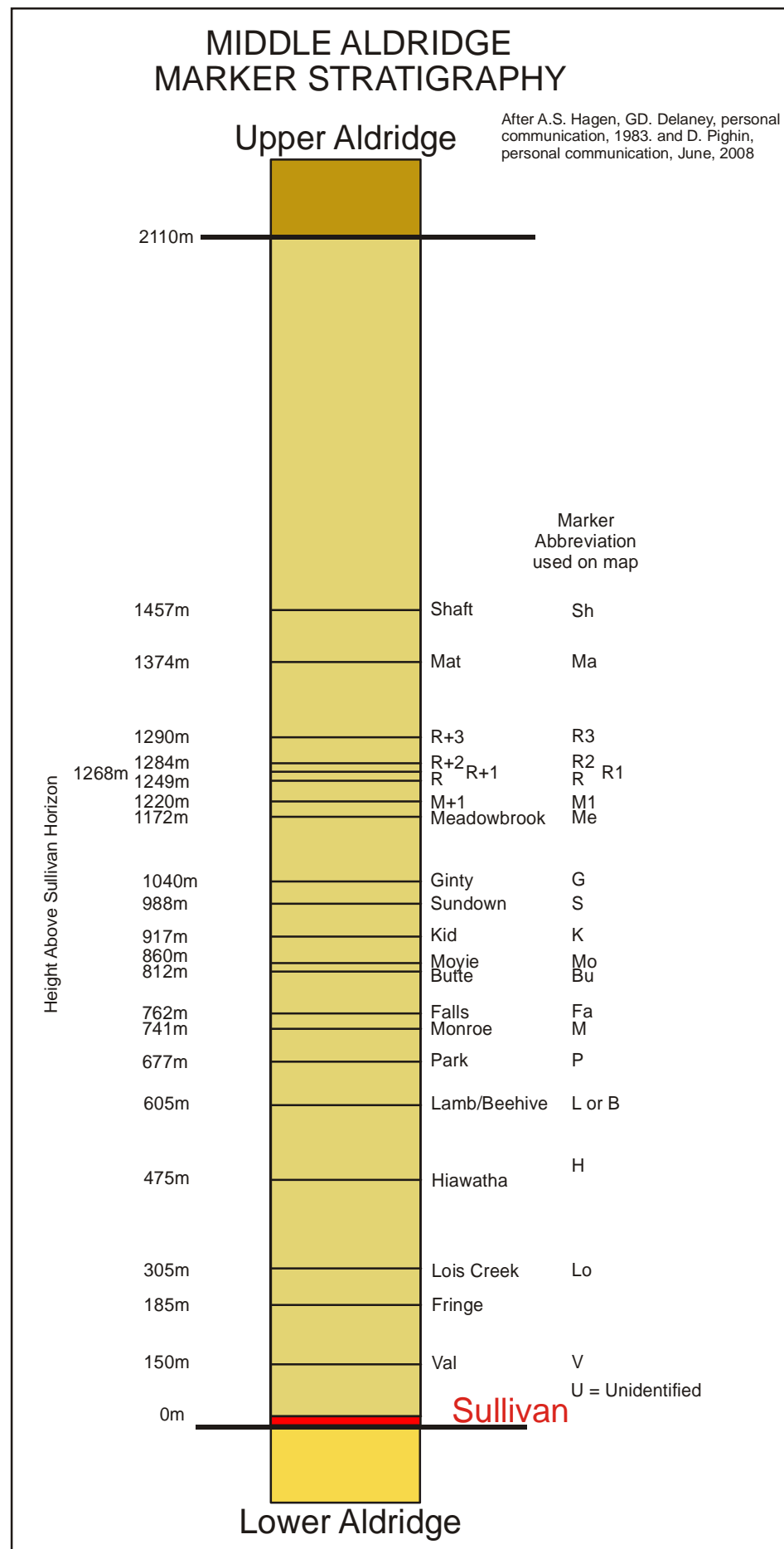


REFERENCES

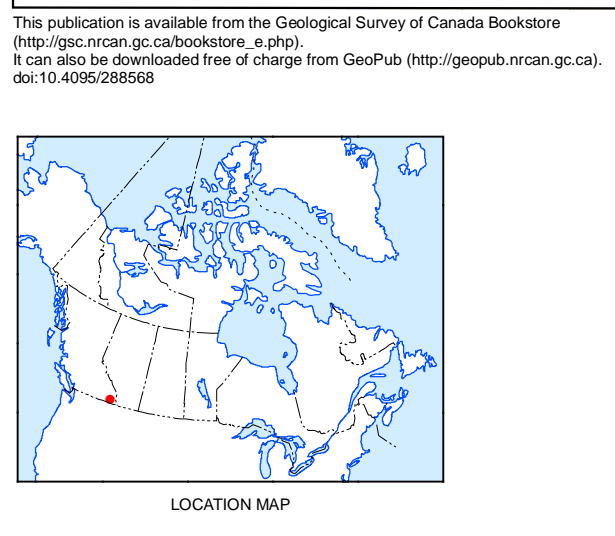
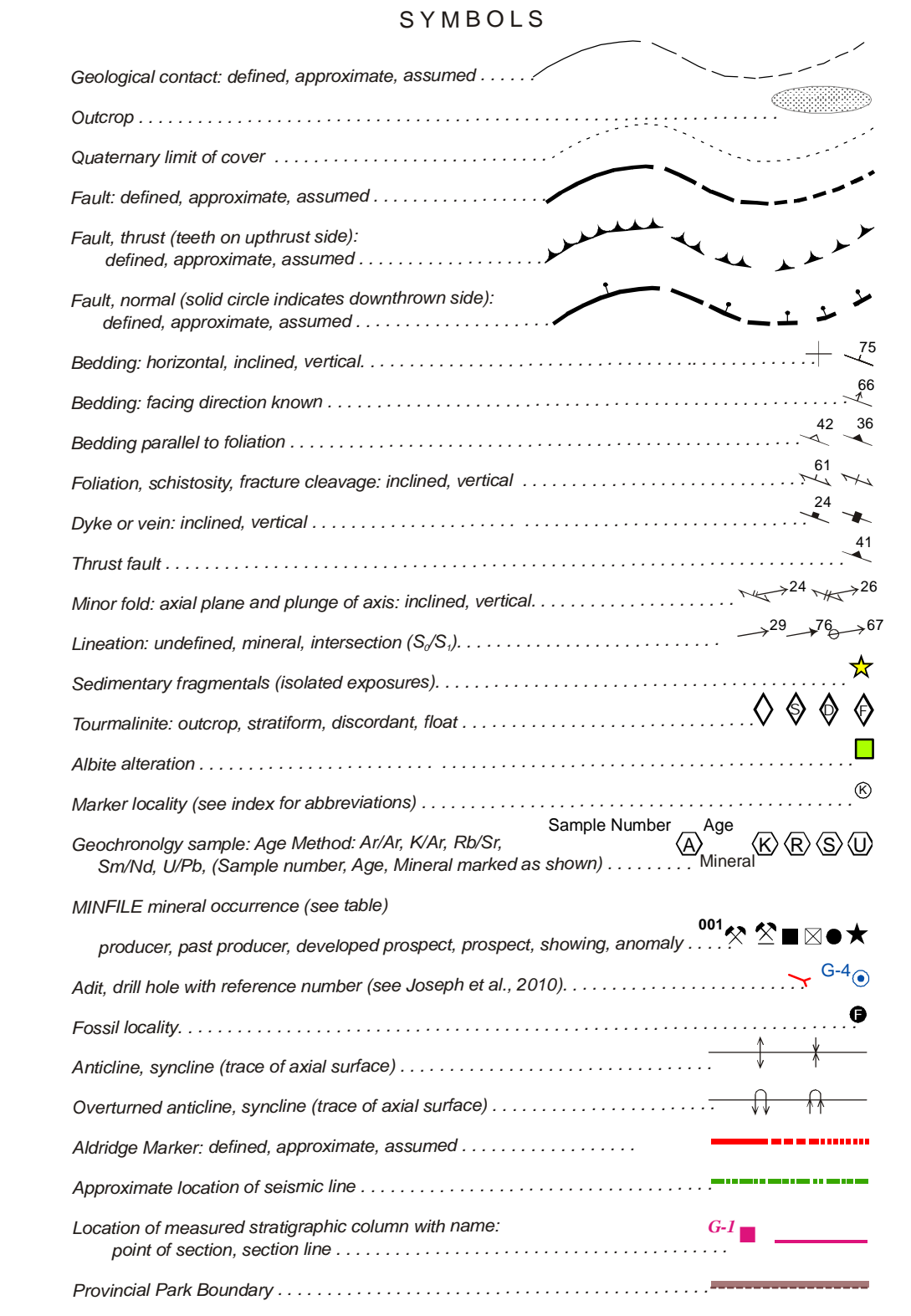
- Anderson, J.E. and Davis, D.W., 1995. U-Pb geochronology of the Myke silt...
Brown, D.A., 1986. Geological Correlation of Grassy Mountain (East Half) and Myke Lake (West Half) Map Areas...



- QUATERNARY: Qal Unconsolidated outwash, alluvium, colluvium and fill.
CAMBRIAN: CE Grey argillite, silty argillite, siltstone; buff weathering, silty limestone; rare bioclastic beds.
PROTEROZOIC: MPOC Green siltstone, argillite, iron-stained dolomite and quartz wacke.
ALDRIDGE FORMATION: MPAU Upper: rusty brown weathering, gray to dark grey, fissile to platy, laminated silty argillite and siltite.

- INTRUSIVE ROCKS: Km Biotite monzogranite; medium to fine grained, massive.
LATE CRETACEOUS: LKMS BAYBONE PLUTONIC SUITE (148Ma) MOUNT SKELLY PLUTON: hornblende-biotite granite; pale grey to white, massive, medium-grained, and potassium-feldspar megacrysts.

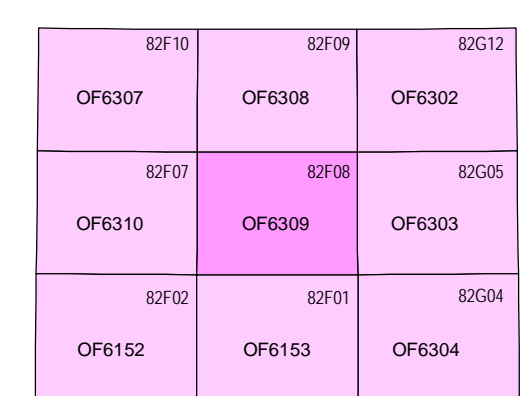
TABLE OF MINFILE OCCURRENCES table with columns: MINFILE NO., NAME, STATUS, COORDINATES. Lists various mineral occurrences like CAMBRO, STORM MOUNT, COLUMBIA, etc.



Compilers: D.A. Brown, R.F. MacLeod, C.L. Wagner, and W. Chow.
Geological compilation by D.A. Brown, R.F. MacLeod, C.L. Wagner, and W. Chow: 2008-2010.
Co-ordinated through the auspices of the Targeted Geoscience Initiative (TGI3).

OPEN FILE 6309
GEOLOGY
GRASSY MOUNTAIN
BRITISH COLUMBIA
Scale 1:50 000/Echelle 1/50 000
Projection: Universal Transverse Mercator Projection

Digital base map from data compiled by Geomatics Canada, modified by Geological Survey of Canada.
Magnetic declination 2011, 19'59"E, decreasing 1" annually.
Elevations in feet above mean sea level.
Contour interval at 100 feet.



OPEN FILE DOSSIER PUBLIC 6309
GEOLOGICAL SURVEY OF CANADA COMMISSION GÉOLOGIQUE DU CANADA
2011