

REFERENCES

Anderson, H.E. and Davis, D.V., 1956. U-Pb geochronology of the Moine silt, Purcell Supergroup, southeastern British Columbia: implications for the Middle Proterozoic geologic history of the Purcell (thrust) basin. *Canadian Journal of Earth Sciences*, v. 35, p. 1180-1193.

Brown, D.A., 1998. Geological Compilation of Grassy Mountain (East Half) and More Lake (West Half) Map Areas, Southeastern British Columbia (82F06, 82C07). In: *History of Energy and Mines, Geoscience Map 1998*, 3, 104-107.

Brown, D.A. and Woodier, R.D., 1998. The Moine Industrial Partnership Project: Geology and Mineralization of the Yukon - Moine Lake Area, Southeastern British Columbia (82F06, 82C07). In: *History of Energy and Mines, Geoscience Map 1998*, 3, 104-107.

Canadian Geoscience Knowledgebase, 2010. Geoscience Data Repository. Geological Survey of Canada, Earth Sciences Sector. Natural Resources Canada, Government of Canada. <http://www.nrc.ca/geoscience/knowledgebase/> [accessed March 1, 2015].

Cook, F.A. and van der Weiden, A.J., 1995. Three-dimensional Crustal Structure of the Purcell Anticline in the Cordillera of Southeastern Canada. *Geology and Society of America Bulletin*, v. 107, p. 654-664.

Franklin, R., 1996. *Moine Property Geology*. Unpublished company map, Kinross-Cortec Canada Inc.

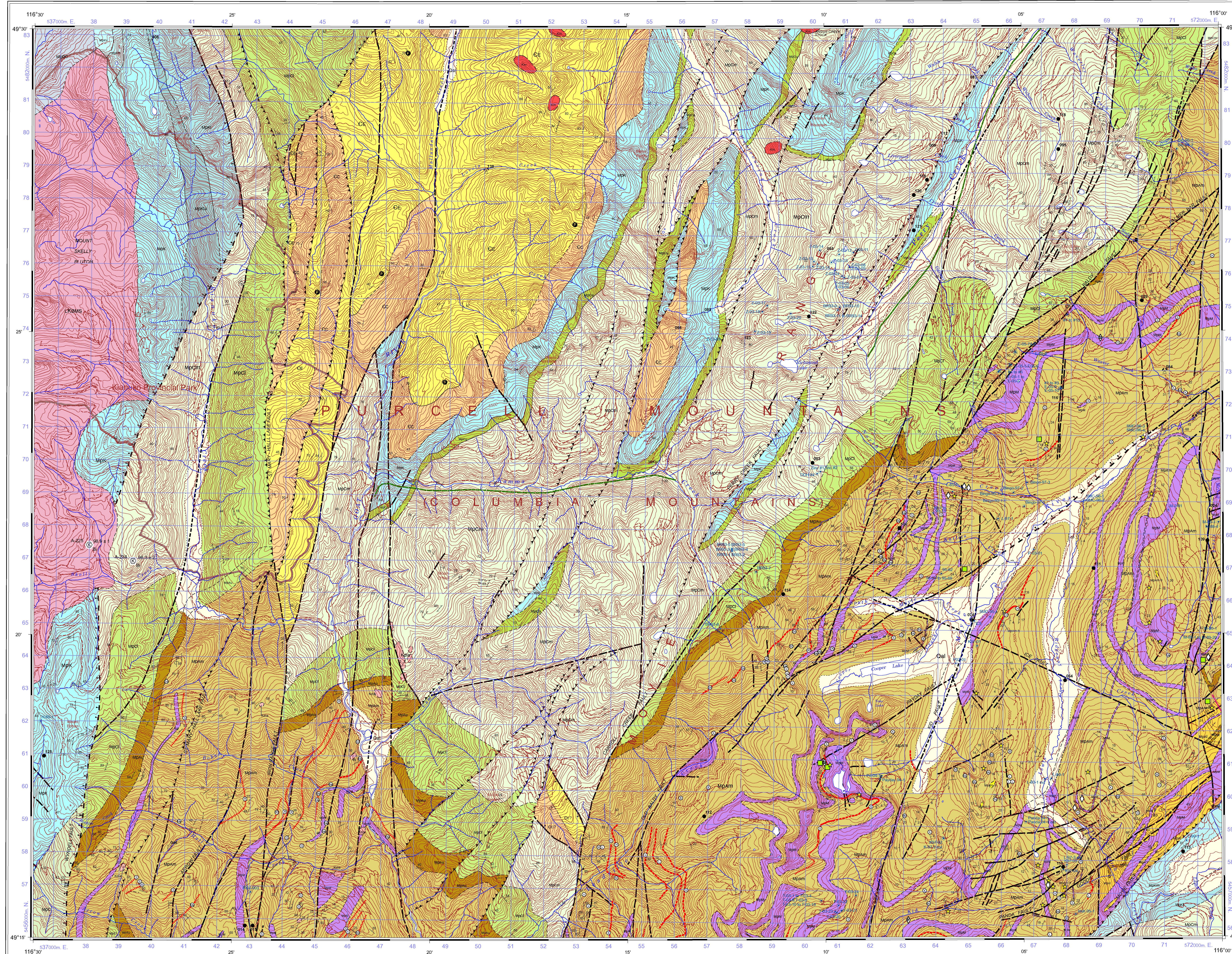
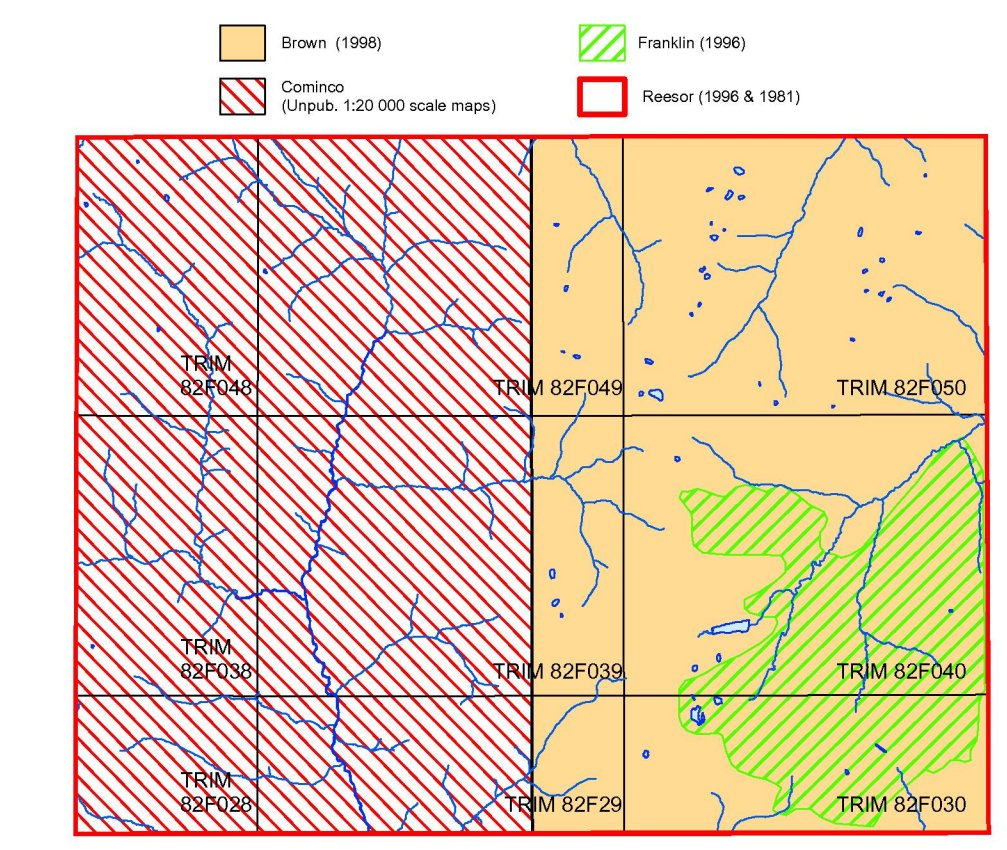
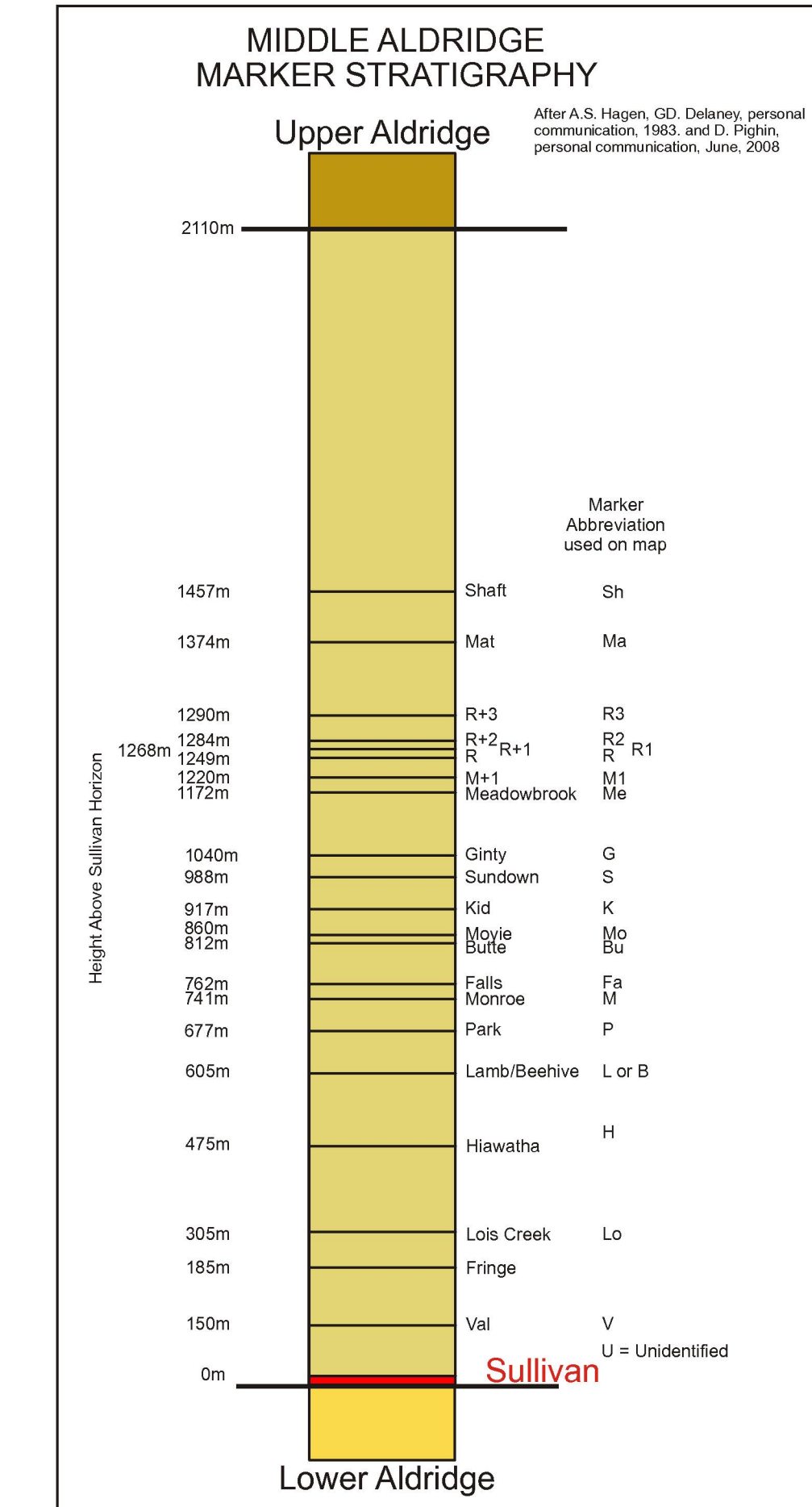
Hoy, L., 1993. *Geology of the Purcell Supergroup in the Fernie West-half Map Area, Southeastern British Columbia*. B.C. Ministry of Energy, Mines and Petroleum Resources, Bulletin 103.

Hoy, L. and Dablow, L., 1982. *Geology of the Moine Lake Area*. B.C. Ministry of Energy, Mines and Petroleum Resources, Preliminary Map 42.

Joseph, J.M.R., Brown, D., and Walker, R., 2010. Diamond drill hole database for the Purcell Basin. Geological Survey of Canada, Open File 6306, 1 CD-ROM.

Russell, J.E., 1981. *Geology of the Grassy Mountain, East Kootenay District, British Columbia (82F06)*. Geological Survey of Canada, Open File 820, scale 1:50,000.

Russell, J.E., 1981. *Geology of the Grassy Mountain, East Kootenay District, British Columbia (82F07)*. Geological Survey of Canada, Open File 820, scale 1:50,000.



LAYERED ROCKS

QUATERNARY

- Qal Unconsolidated outwash, alluvium, colluvium and fill.

PALEOZOIC DEVONIAN (?)

- Dpa Devonian Conglomerate, Polymictic conglomerate.

CAMBRIAN

LOWER AND (?) MIDDLE CAMBRIAN EAGER FORMATION

- CE Grey argillite, silty argillite, siltstone; buff weathering, silty limestone; rare biohermal beds.

CRANBROOK FORMATION

- CC Quartzite, limestone, calcite marble, dolomite marble, calc-silicate.

PROTEROZOIC MESOPROTEROZOIC (HELKIAN) PURCELL SUPERGROUP

DUTCH CREEK FORMATION

- MpDC Green siltstone, argillite, arenaceous dolomite and quartz wacke.

KITCHENER FORMATION

- MpK Undertified.

MIDDLE DEVONIAN

- MpMn Middle Devonian: siltstone, dolomite, argillite, dolomite, commonly buff-weathering; argillite, siltstone, quartzite, green tinged dolomitic siltstone near base.

LOWER DEVONIAN

- MpMl Lower Devonian: dolomitic argillite, dolomite, commonly buff-weathering; argillite, siltstone and quartzite MPML. Grey carbonate member.

CRESTON FORMATION

- MpC Undertified.

UPPER

- MpCu Upper green siltstone, black or purple argillite and siltstone.

MIDDLE

- MpCm Middle light grey, massive, purple, thin-to medium-bedded quartz arenite, quartz wacke, lesser grey siltite and argillite. White quartzite interbeds. Lenticular bedding, ripple, cross-bedding and mudcracks.

LOWER

- MpCl Lower: waxy green to olive, tan weathering, laminated to thick-bedded argillite and siltite. Lesser fine grained quartz wacke. Wavy bedding and abundant mudcracks.

ALDRIDGE FORMATION

- MpAu Upper: rusty brown weathering, grey to dark grey, fissile to platy, laminated silty argillite and siltite.
- MpAm Middle: grey to rusty weathering, block to thin-bedded, quartzofeldspathic wacke with argillite and siltite, intercalations.
- MpAm-H Fragmental rocks interpreted as sedimentary debris flows, breccias formed in downsloping pathways, and volcanic debris, and hydrothermal breccias: stratiform and discordant, massive and framework-supported fragmental rocks consisting of angular to rounded quartzite clasts having a size range of <20m to 20m.
- MpAl Lower: rusty brown weathering, thin to medium-bedded, quartz wacke, quartz arenite.

INTRUSIVE ROCKS

MESOZOIC CRETACEOUS

- Km Biotite megacrystic; medium to fine grained, massive.

LATE CRETACEOUS

DIABYNE PLUTONIC SUITE (LKBMS)

- LKBMS Mount Skelly Pluton: hornblende-biotite granite; pale grey to white, massive, medium-grained, and potassium-feldspar megacrystic; local magmatic layering occur.

CRETACEOUS OR OLDER

- Kdia Diabene: Lamprophyre sills and dykes that intrude the Aldridge and Creston Formations; brown weathering, carbonatized, large megacrysts and xenocrysts of plagioclase, amphibole, and zircon in a fine-grained, dark chlorite matrix; 10-80 percent by volume xenocrystic; sedimentary, lower crustal, and mantle derived xenocrysts; possibly Cretaceous age.

PROTEROZOIC MESOPROTEROZOIC (HELKIAN) MESOHELKIAN

MOINE INTRUSIONS

- MpM Moine Sill: Dark green to black, medium- to fine-grained gabbro and hornblende quartz diorite sills and minor dikes. Zircon (U-Pb) dates circa 1467 Ma (Anderson and Davis, 2005).

SYMBOLS

Geological contact: defined, approximate, assumed

Outcrop

Quaternary limit of cover

Fault: defined, approximate, assumed

Fault: thrust (shown on upglift side): defined, approximate, assumed

Fault: normal (solid circle indicates downthrown side): defined, approximate, assumed

Bedding horizontal, inclined, vertical

Bedding facing direction known

Bedding parallel to foliation

Foliation: schistosity, fracture cleavage: inclined, vertical

Dyke or vein: inclined, vertical

Trusted fault

Minor fault: axial plane and plunge of axis: inclined, vertical

Location: undefined, mineral, intersection (S, G)

Sedimentary fragmentals (isolated exposures)

Tourmalinifer: outcrop, stratiform, discordant, float

Albite alteration

Marker locality (see index for abbreviations)

Geochronology sample: Age Method Acrit, KAr, Rb/Sr, Sm/Nd, U/Pb (Sample number, Age, Mineral marked as shown)

MINFILE mineral occurrence (see table)

producer, past producer, developed prospect, prospect, showing, anomaly

Act, drill hole with reference number (see Joseph et al., 2010)

Fossil locality

Axialite, syncline (line of axial surface)

Overturned anticline, syncline (line of axial surface)

Assigner Marker: defined, approximate, assumed

Approximate location of axiomatic line

Location of measured stratigraphic column with name: position, section line

Provincial Park Boundary

TABLE OF MINFILE OCCURRENCES

MINFILE NO.	NAME	STATUS	COMMODITIES
082F0109	CADDOCK	Showing	PB,Zn,Cu,Ag,As,Au
082F0109	STAN KNO (L 3005)	Showing	AL,FE,BN,CU,AL,WO
082F0109	COLLIERIA	Prospect	AU,FE,CU
082F0109	EMERALD	Prospect	AU,FE,CU
082F0109	GOLDEN OAK (L 344)	Showing	FE
082F0109	UNION JACK (L 376)	Showing	FE
082F0109	MONEY	Prospect	FE,ZN,AS,CU,AL
082F0109	PROSPERITY (SHEAM (1774))	Showing	AU
082F0109	MS	Prospect	FE,CU
082F0109	ROYAL CROWN	Showing	FE,CU
082F0109	YELLOW HAZEL	Prospect	AL,CU,AS
082F0109	FRANCIS (L 1425)	Prospect	MT
082F0109	ICE	Showing	TI
082F0109	WINDY CREEK	Past Producer	AU
082F0109	WELINGTON	Prospect	AU,AG,FE,ZN,CU
082F0109	MARIE	Prospect	AU,FE,AS,CU,Zn
082F0109	BURNING OIL	Showing	AU
082F0109	MOPE ENGINE	Past Producer	AU
082F0109	DAVID	Developed Prospect	AU,CU,FE,Zn
082F0109	MONEY	Showing	FE,ZN,AS,CU,AL
082F0109	ROBINSON	Showing	Zn,FE,AS,CU
082F0109	BROOK	Showing	AU
082F0109	HEAN	Showing	CU
082F0109	LOBB	Showing	Ag,Sn
082F0109	COOPER	Showing	AU
082F0109	LEW VENT	Prospect	FE,ZN,CU,AL,WO
082F0109	WILSON	Prospect	AU,FE
082F0109	BLACK	Showing	AU
082F0109	BLACK	Showing	AU,CU,FE
082F0109	SHARPSPARE	Showing	AU
082F0109	NEWTON ANNIE	Showing	AU
082F0109	ETNA	Showing	AU,FE,CU,Zn
082F0109	SCUD RUN	Showing	AU
082F0109	REAL TANK (RUE TRAND)	Prospect	Ag,Sn
082F0109	ME	Showing	MO
082F0109	HALL	Showing	FE,Zn
082F0109	LAKLO CREEK	Past Producer	Zn



OPEN FILE DOSSIER PUBLIC 6309

Open file dossier public 6309

Les données publiées sont les données les plus récentes disponibles au moment de la publication de ce dossier.

2011