

REFERENCES

Canadian Geotechnical Knowledgebase, 2010. Geoscience Data Repository. Geological Survey of Canada, Earth Science Sector Natural Resources Canada, Government of Canada. [http://www.nrc.ca/geotechnical\\_knowledgebase/](http://www.nrc.ca/geotechnical_knowledgebase/) (accessed 11/11/2010).

David, W.J., Brakenhoff, H.K., and Bond, G.C., 1989. New isotopic data and a preliminary age for volcanics near the base of the Woodmen Formation, Northeast Washington, U.S.A.; Canadian Journal of Earth Sciences, Volume 25, P. 1906-1911.

Felix, J.T., 1967. Geology of the Alouette-Kaslo area, British Columbia. British Columbia Department of Mines and Petroleum Resources, Bulletin No. 52.

Osborn, J.K., 1978. Geology of the Summit Creek map area, southern Kootenay Arc, southeastern British Columbia; Ph.D. thesis, Queen's University, Kingston, Ontario, 433p.

Hily, T., 1960. Geology of the floodplain area, central Kootenay Arc, southeastern British Columbia; B.C. Ministry of Energy, Mines and Petroleum Resources, Bulletin 73.

Joseph, H.E., Brown, D., and MacLeod, C.L., 2010. Open File Database for the Purcell Basin, Geological Survey of Canada. Open File 6307, 1 CD-ROM.

Lucas, A.D., 1983. Geology, Crawford Bay British Columbia. Geological Survey of Canada, Open File 6029.

Lucas, A.D., 1986. Geology, Muddy Creek area, British Columbia. Geological Survey of Canada, Open File 1032.

Liu, M.G., 1972-73. Fieldwork manuscript, unpublished, Queen's University, Kingston, Ontario.

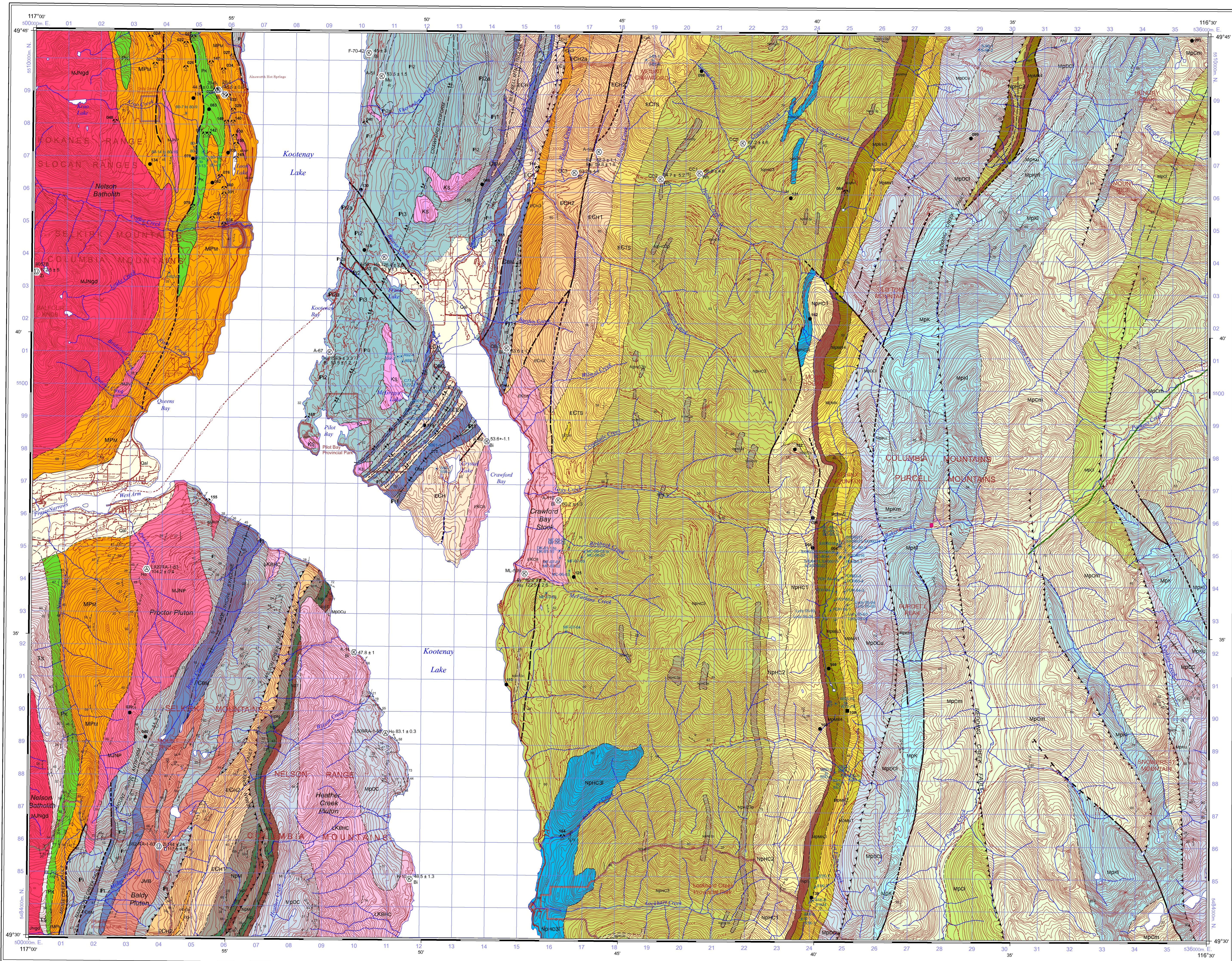
Reese, J.E., 1956. Geology of Kootenay Lake, B.C.; Geological Survey of Canada, Map 1584-A.

TABLE OF MINFILE OCCURRENCES

Table with 4 columns: MINFILE NO, NAME, STATUS, COMMODITIES. Lists various mineral occurrences with their names and associated commodities like copper, silver, and gold.

Legend for map symbols: Type (1967), Hwy (1962), LACM (1953 and 1966), LK (1970-1972), Reson (1996).

REFERENCE MAP OF SOURCE INFORMATION: A small map showing the location of the study area within the Kootenay region of British Columbia.



Compilers: D.A. Brown, R.F. MacLeod, C.L. Wagner, and W. Chow. Geological compilation by D.A. Brown, R.F. MacLeod, C.L. Wagner, and W. Chow, 2008-2010. Digitized through the auspices of the Targeted Geoscience Initiative (TGI3).

OPEN FILE 6307 GEOLOGY CRAWFORD BAY BRITISH COLUMBIA Scale 1:50 000/Echelle 1/50 000. Includes projection information and scale details.

Digital base map from data compiled by Geomatics Canada, modified by Geological Survey of Canada. Magnetic declination 2011, 15°54'E, decreasing 11' annually. Elevations in feet above mean sea level. Contour interval at 100 feet.

Table of Open File numbers: 6274, 6275, 6276, 6277, 6278, 6279, 6280, 6281, 6282, 6283, 6284, 6285, 6286, 6287, 6288, 6289, 6290, 6291, 6292, 6293, 6294, 6295, 6296, 6297, 6298, 6299, 6300, 6301, 6302, 6303, 6304, 6305, 6306, 6307, 6308, 6309, 6310, 6311, 6312, 6313, 6314, 6315, 6316, 6317, 6318, 6319, 6320.

Geological legend and symbols section. Includes 'LAYERED ROCKS' with color-coded units (e.g., Gcal, Mpcm, Mpci), 'INTRUSIVE ROCKS' (e.g., KFC, KS, LKHC), 'SYMBOLS' for geological features like faults and folds, and 'OPEN FILE 6307 PUBLIC' information.