

REFERENCES

Canadian Geoscience Knowledgebase, 2010. Geoscience Data Repository, Geological Survey of Canada, Earth Sciences Sector. Natural Resources Canada, Government of Canada. http://geobase.nrc.ca/geobase.nrc.ca/ (accessed January 12, 2011).

Hwy, T., 1969. Geology of the Hazelton area, northwestern British Columbia. British Columbia Department of Mines and Petroleum Resources, Bulletin No. 53.

Joseph, J.M.B., Brown, D., and Walker, R., 2010. Diamond drill hole database for the Purcell Basin, Geological Survey of Canada, Open File 6306.

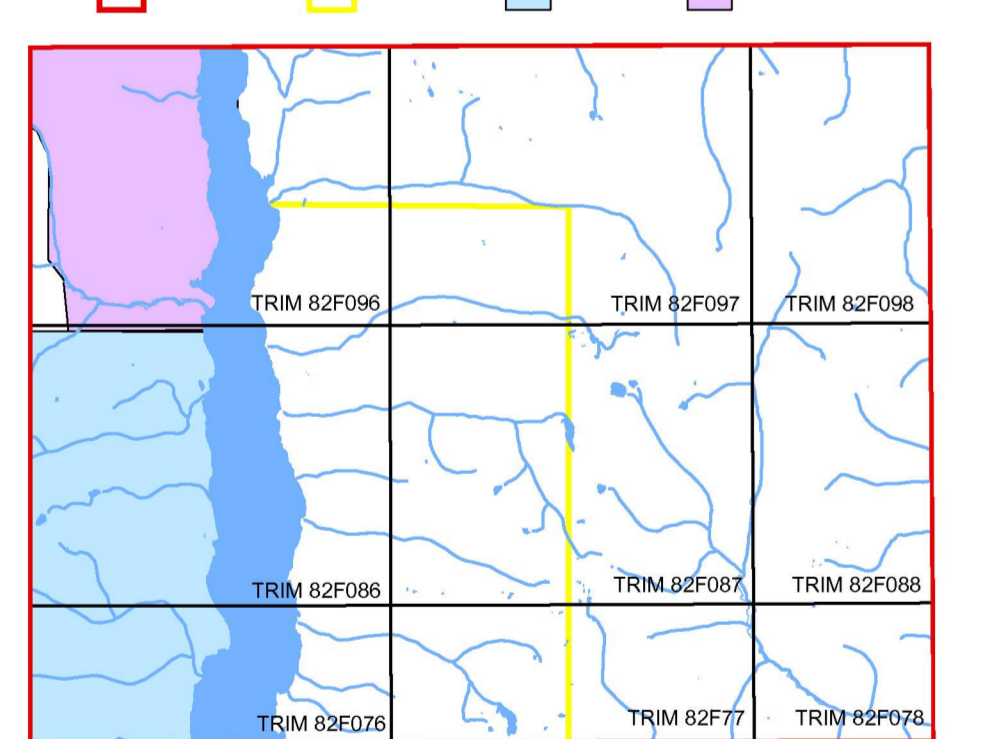
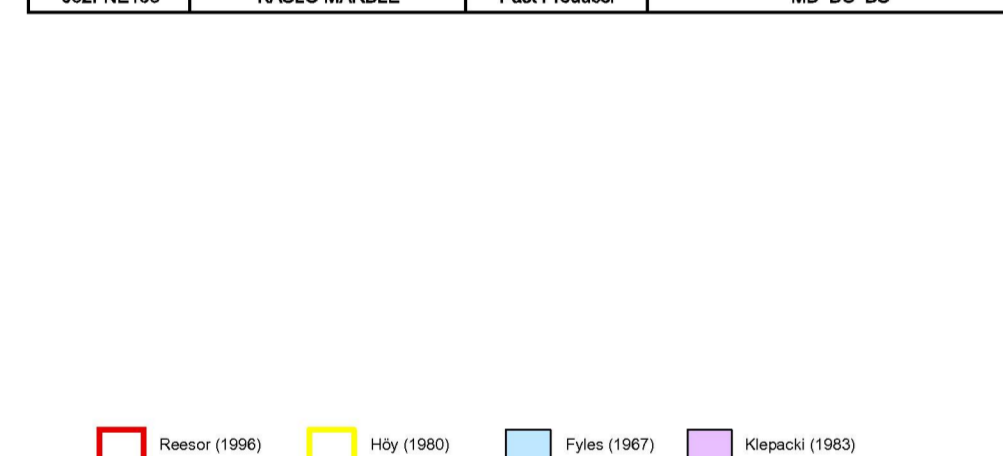
Kloppsch, D.W., 1983. Stratigraphy and structural relations of the Midport, Kaslo and Stoen Groups, Rocky Mountain, Larouze map-area. In Current research, part A, Geological Survey of Canada, Paper 83-1A, p. 229-233.

Kloppsch, D.W. and Wheeler, J.O., 1985. Stratigraphy and structural relations of the Midport, Kaslo and Stoen Groups, Coast Range, Larouze and Nelson map areas, British Columbia. In Current research, Part A, Geological Survey of Canada, Paper 85-1A, p. 277-300.

Kloppsch, D.W., 1988. Stratigraphy and structural geology of the Great Range area, southwestern British Columbia. Ph.D. thesis, Massachusetts Institute of Technology, 268 p.

Rosser, J.E., 1966. Geology of Kootenay Lake, B.C.: Geological Survey of Canada, Map 1064-A.

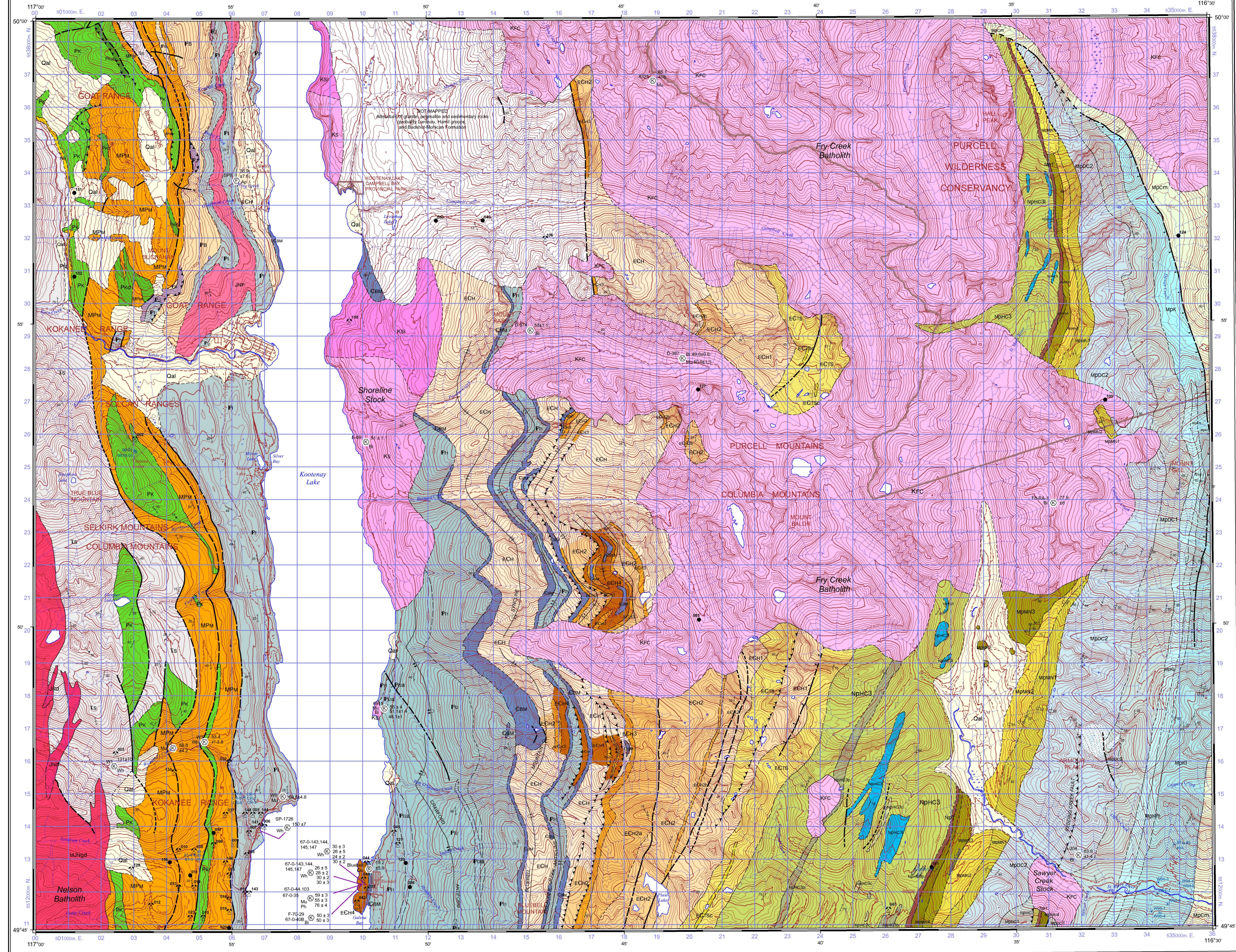
TABLE OF MINFILE OCCURRENCES. Table with columns: MINFILE NO., NAME, STATUS, COMMODITIES. Lists various mineral occurrences such as TRUE BLUE (4896), SILVER COIN, VOLCANIC, HAMILTON, etc.



Legend for geological units and features. Includes symbols for geological contact, fault, fold, and various geological units like ECH, KFC, etc.

Legend for geological units and features. Includes symbols for geological contact, fault, fold, and various geological units like ECH, KFC, etc.

Geological contact defined, approximate, assumed. Fault defined, approximate, assumed. Fold defined, approximate, assumed.



OPEN FILE 6306 GEOLOGY KASLO BRITISH COLUMBIA. Scale 1:50 000. Compilers: D.A. Brown, R.F. MacLeod, and C.L. Wagner. Geological compilation by D.A. Brown and R.F. MacLeod, 2008-2010, and C.L. Wagner, 2009-2010.

Geological Survey of Canada. Digital cartography by R.F. MacLeod and C.L. Wagner, Geological Survey of Canada. Any revisions or additional geological information known to the user would be welcomed by the Geological Survey of Canada.

Geological legend and symbols. Includes sections for LAYERED ROCKS, INTRUSIVE ROCKS, SYMBOLS, and various geological units like ECH, KFC, etc. with their descriptions and colors.

Legend for geological units and features. Includes symbols for geological contact, fault, fold, and various geological units like ECH, KFC, etc.

OPEN FILE DOSSIER PUBLIC 6306. Geological Survey of Canada, Commission géologique du Canada, 2011. Open files are products that have not gone through the CSIS formal publication process.