

REFERENCES

Anderson, H.E. and Davis, D.W. (1966) Litho-geochronology of the Moyie sills, Purcell Supergroup, southeastern British Columbia: implications for the Mesoproterozoic geologic history of the Purcell (Belt) basin. *Canadian Journal of Earth Sciences*, v. 3, p. 1189-1193.

Andrew, K.P.E., Hoy, T., and Drobe, J. (1990) Geology of the Restored Group, Beaver Creek Area, Southeastern British Columbia (B.C. 82F/4E), by K.P.E. Andrew, T. Hoy and J. Drobe (1:20 000), 1 sheet, Open File 1990-9.

Andrew, K.P.E., Hoy, T., and Drobe, J. (1991) Geology of the Trail Map Area, Southeastern British Columbia (B.C. 82F/4E), by K.P.E. Andrew, T. Hoy and J. Drobe (1:20 000), 1 sheet, Open File 1991-16.

Canadian Geoscience Knowledgebase. 2010. Geoscience Data Repository. Geological Survey of Canada, Earth Science Center Natural Resources Canada, Government of Canada. <http://geoscience.gc.ca/geoscienceknowledgebase> [accessed January 12, 2010].

Cominco Ltd. (Unpublished). 1:20,000 and 1:50,000 scale geology maps.

Ehrmann, J.M. (1984) Structural geology of the New Caledonia area and tectonic evolution of the southern Kootenay Belt. Thesis of dissertation, Doctor of Philosophy, University of Calgary, Calgary, AB, Canada (CAN), 217 p. maps.

Fyles, J.T. and Stewart, C.G. (1959) Stratigraphy and structure of the Salmo lead-zinc area, British Columbia. Department of Mines, Bulletin 41, 162 p.

Joseph, J.M.R., Brown, D. and Walker, R. (2010) Diamond Drill Hole Database for the Purcell Basin: Geological Survey of Canada, Open File 6302, 1:50,000 scale, 7 and 8 series, 1990. Geology of the Restored Group, Mount Kelly - Halling Creek Area, Southeastern B.C. (B.C. 82F/4W) (1:20 000), 1 sheet, Open File 1990-8.

Hoy, T. (1983) Geology of the Purcell Supergroup in the Fernie West Half Map Area, Southeastern British Columbia, B.C. Ministry of Energy Mines and Petroleum Resources, Bulletin 84.

Hoy, T. and Carter, G. (1988) Geology of the Fernie West Half Map Sheet (and Part of Nelson East half) (B.C. 82G/4F), 1:50,000 scale, 2 sheets, MESA/RS, Open File 1988-14.

Hoy, T. and Durkin, P.E. (1987) Early Jurassic Restored Group, southern British Columbia, Part 1 - Stratigraphy and Tectonics. BC Ministry of Energy, Mines and Petroleum Resources, Bulletin 102, 124 p.

Little, H.W. (1965) Geology, Salmo, British Columbia. Geological Survey of Canada, "A" Series Map 1145A, 1965.

Mattick, W.H. (1963) Geology of the Sheep Creek Camp, British Columbia Department of Mines, Bulletin no. 31, 94 p.

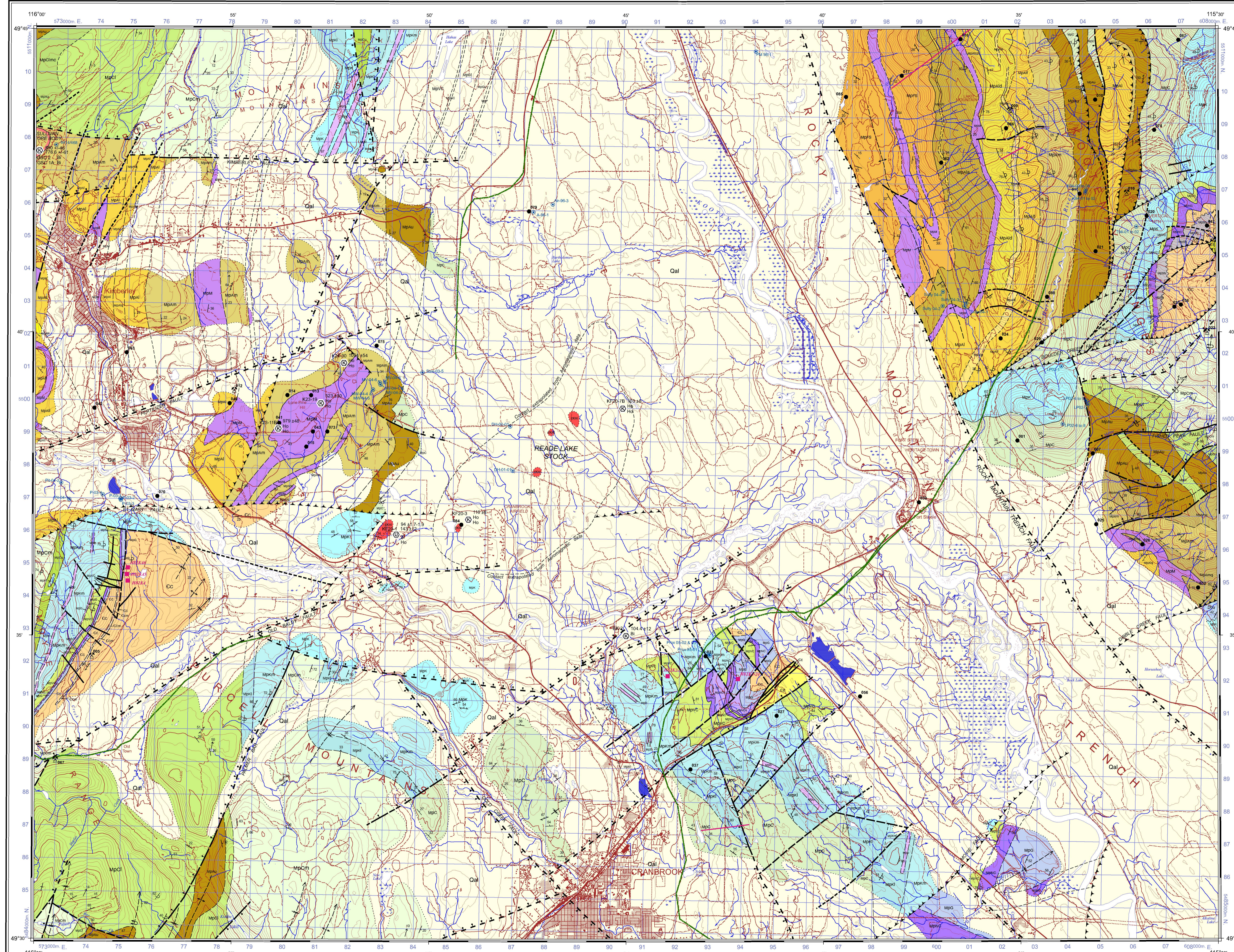
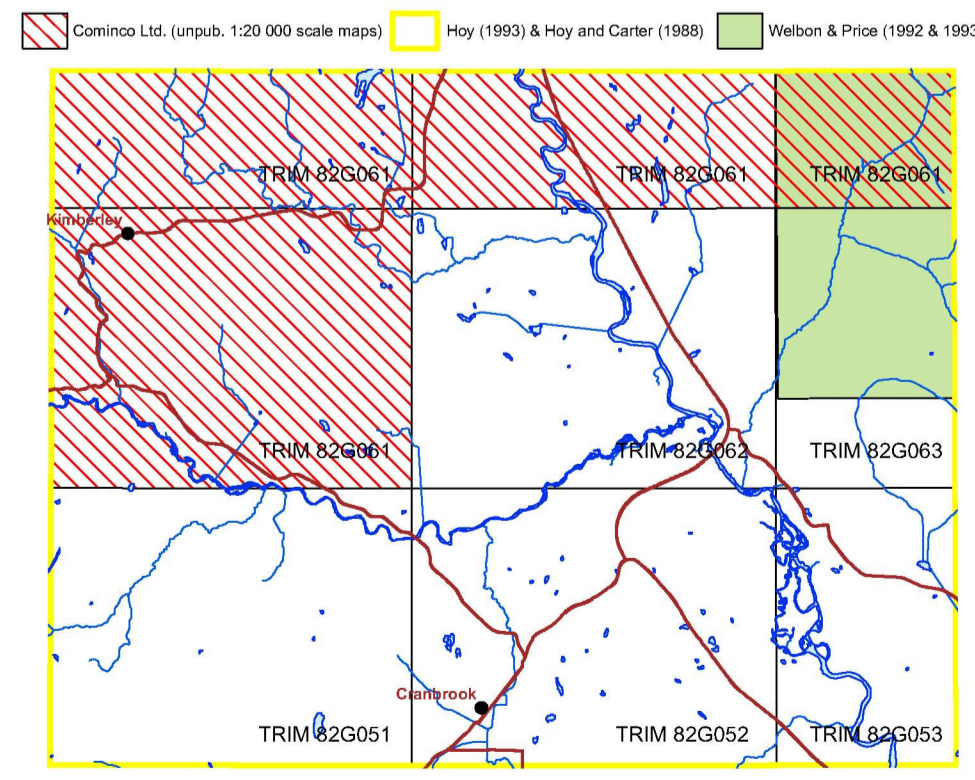
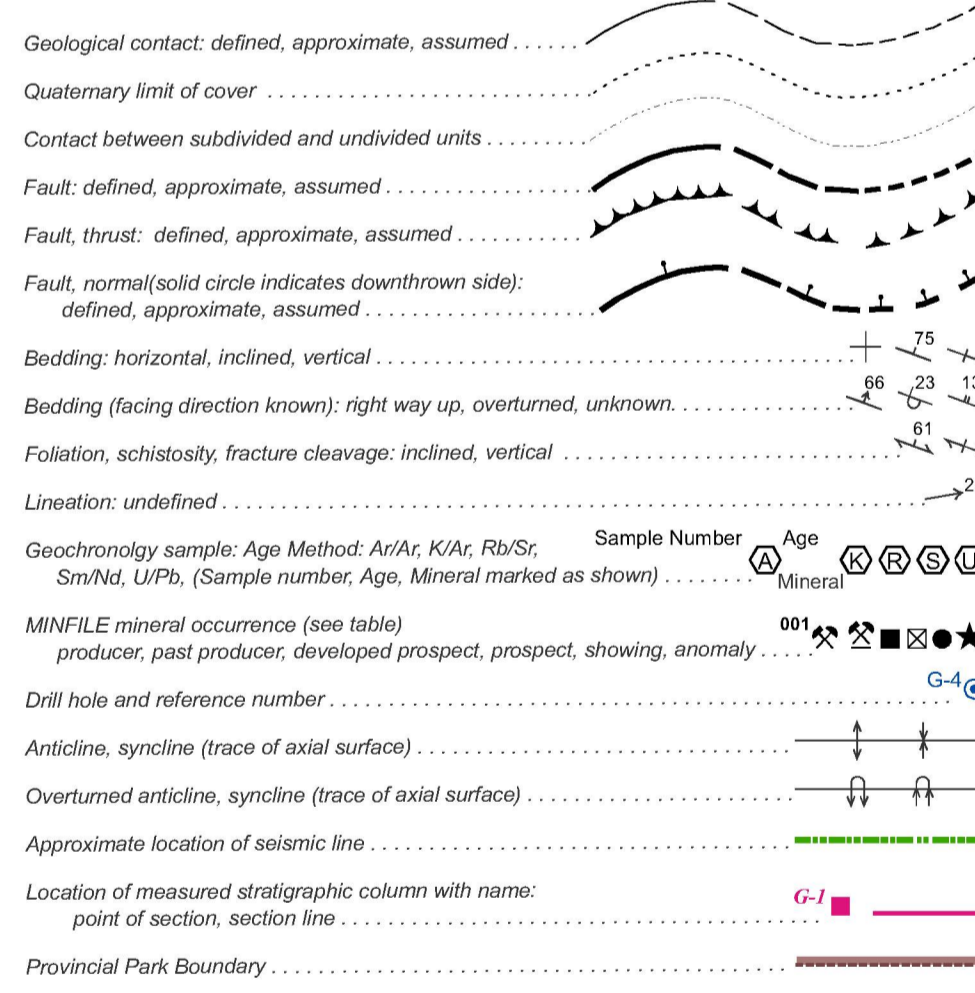
Webster, A.I. and Price, R.A. (1992) Geology of the Central Highlands Range, British Columbia (B.C. 82G/11, 12, 13, 14), 1:50,000 scale, 4 sheets, Open File 1992-17.

Webster, A.I. and Price, R.A. (1993) Geology of the Wild Horse River - Lussier River Area, SE British Columbia (B.C. 82G/11, 12, 13, 14), 1:50,000, 1 sheet, Open File 1993-7.

TABLE OF MINFILE OCCURRENCES

MINFILE NO.	NAME	STATUS	COMMODITIES
082GNW001	MAGNET	Showing	PB ZN AG
082GNW005	MARYVILLE	Past Producer	MT
082GNW007	MAUS CREEK	Showing	AU
082GNW008	KOOTENAY (N.W. 1/4, 7/8)	Past Producer	AG PB ZN CU/AU CU
082GNW010	PALMAYRA	Showing	PB
082GNW011	LILY MAY EXT.	Showing	PB CU
082GNW012	PARK	Past Producer	PB AG
082GNW013	LIME	Showing	CU/AU
082GNW014	GREY COPPER	Showing	CU/AU AG
082GNW015	YANKET GIRL	Showing	CU/AU AG PB ZN
082GNW016	KOOTENAY-SILKIRK	Showing	CU PB AG
082GNW017	TRV ADAM	Showing	CU/AU
082GNW018	DARDENELLE (L. 10329)	Past Producer	PB ZN AG AU CU
082GNW020	LILY MAY	Showing	AU AG PB ZN
082GNW021	ST. TRESA	Showing	PB AG
082GNW022	MIDAS (L. 2456)	Past Producer	PB AG AU CU
082GNW023	PIPER	Showing	AU/AU CU
082GNW024	DOUGHERTY	Showing	AU
082GNW025	EAGLE PLUME	Showing	CU AG AU
082GNW026	EAGLE'S NEST	Showing	CU
082GNW027	COPPER HILL	Showing	CU/AU
082GNW029	EXPANDER	Showing	AU
082GNW032	EAGLE TOG	Showing	CU/AU
082GNW033	KING	Showing	CU
082GNW036	BOLDEN CREEK	Showing	MT
082GNW037	CRANBROOK	Showing	CY
082GNW039	FORT STEELE CLAY	Showing	CY
082GNW040	SYLVIA	Showing	CU PB ZN
082GNW041	BLUE DRAGON (L. 3066)	Showing	CU
082GNW042	OMNECA (L. 5272)	Showing	CU
082GNW043	BLACK HILLS (L. 8950)	Showing	CU PB
082GNW047	WALLINGER	Showing	MT
082GNW050	FAUNER STATION	Showing	CY
082GNW052	CHER	Showing	CU
082GNW053	BLACK BEAR (L. 4845)	Showing	PB ZN
082GNW057	PERRY CREEK	Past Producer	AU
082GNW070	RISEL	Showing	PB ZN
082GNW073	BO	Showing	PB ZN CU
082GNW074	OLIVA	Showing	CU
082GNW075	KIM 53	Showing	CU PB ZN
082GNW079	VANT	Showing	ZN AG PB CU
082GNW080	MUTT	Showing	AU
082GNW084	PINE	Showing	AU AG
082GNW085	DAN	Showing	PB CU AG
082GNW087	WIT	Showing	PB AG
082GNW088	GOLDEN FIVE	Showing	PB ZN CU AG AU
082GNW093	ASPEN	Showing	FD BS

SYMBOLS



CEANOZOIC QUATERNARY

- Qal Unconsolidated outwash, alluvium, colluvium and till.

PALEOZOIC

UPPER FAIRFOLME GROUP EQUIVALENT BASAL DEVONIAN UNIT

- Dbu Dark shaly limestone, nodular, blocky, blocky, laminated gypsum sandstone, breccia, conglomerate, sandy siltstone and orthoquartzite in lower part.

MIDDLE AND/OR UPPER CAMBRIAN JUBILEE FORMATION

- CJ Dense, cherty limestone, laminated dolomite, intraformational breccia, sandstone and conglomerate.
- CT Shaly limestone, intraformational breccia, sandy shale, conglomerate.

CAMBRIAN LOWER AND (?) MIDDLE CAMBRIAN

- Ce Grey argillite, silty argillite, siltstone, buff weathering, silty limestone, rare bioclastic beds.
- Cc Calcite marble, dolomite marble, calc-silicate.
- Ccm Magnetite unit.

PROTEROZOIC MESO-PROTEROZOIC (HELIKIAN) PURCELL SUPERGROUP SHEPPARD FORMATION

- Mpsh Sandstone and conglomerate locally at base; dolomitic quartzite, sandstone, oolitic dolomite, stromatolitic dolomite at top.
- MPG Dolomite, quartz wacke, siltstone, argillite.

GATEWAY FORMATION

- Mpvc Pale green, laminated, siltstone and argillaceous siltstone and quartz wacke. Minor ripple marks, lenticular bedding, rare flattened mudcracks.

NICOL CREEK FORMATION

- Mpnc Massive to amygdaloidal basalt to andesite lava flows, volcanic sandstone, siltstone.
- Mpncs Volcaniclastic siltstone, fine quartz wacke.

VAN CREEK FORMATION

- Mpvc Pale green, laminated, siltstone and argillaceous siltstone and quartz wacke. Minor ripple marks, lenticular bedding, rare flattened mudcracks.

KITCHENER FORMATION

- Mpk Thin bedded, brown weathering dolomitic siltstone and green argillite.
- Mpkm Middle, dolomitic siltstone, dolomitic argillite and dolomite, commonly buff weathering argillite, siltstone, quartzite, green tinged dolomitic siltstone near base.
- Mpkd Lower, green, beige siltstone, dark grey argillite, dolomitic siltstone.

CRESTON FORMATION

- Mpc Light grey, mauve, green siltstone and argillite; thin- to medium-bedded quartz arenite, quartz wacke, lenticular bedding, ripples, cross-bedding and mudcracks.
- Mpcu Upper, green siltstone; black to purple argillite and siltstone.
- Mpcm Middle, light grey, mauve, purple, thin- to medium-bedded quartz arenite, quartz wacke, lesser grey siltstone and argillite. White quartzite siltstone. Lenticular bedding, ripples, cross-bedding and mudcracks.
- Mpci Lower, waxy green to olive with tan weathering surfaces, thin- to thick-bedded to laminated argillite and siltstone. Lesser fine grained quartz wacke. Wavy bedding and abundant mudcracks.
- Mpcmc Mad-cracked member.

ALDRIDGE FORMATION

- Mpa Quartzofeldspathic wacke, siltstone and argillite.
- Mpau Upper, rusty brown weathering, grey to dark grey, fissile to platy, laminated silty argillite, siltstone.
- Mpam Middle, grey to rusty weathering, thick to thin-bedded, quartzofeldspathic wacke, intercalated argillite and siltstone, mPau quartzite.
- Mpamq Quartzite.
- Mpai Lower, rusty brown weathering, thin- to medium-bedded, quartz wacke, quartz arenite.
- Mpaia Argillite, siltstone.
- Mpaib Silty dolomite.
- Mpaic Siltstone, argillite (dolomitic, in part).
- Mpaid Siltstone, argillite.
- Mpaie Quartzite.
- Mpah Sedimentary fragmental, stratiform to discordant, matrix-supported to framework-supported, angular to rounded, fine quartz wacke fragments. Fragment sizes vary greatly - from <2mm to >2m. Interpreted to be syn-tectonic debris flows, cleavaging structures, mud volcanoes and hydrothermal breccia.

INTRUSIVE ROCKS

- Mpau Upper siltstone, argillite, minor quartzite.
- Mpall Lower siltstone, siltstone, argillite, minor quartzite.
- Mpfs Quartzofeldspathic wacke, siltstone and argillite.

CRETACEOUS EARLY CRETACEOUS BAYONNE PLUTONIC SUITE READE LAKE STOCK

- EKRL Biotite monzogranite.

PROTEROZOIC MESO-PROTEROZOIC (HELIKIAN) MESOHELIKIAN

- Mpb Mafic sills and rare dikes hosted in Kitchener Formation. Olive green, massive to plagioclase porphyritic.

MOYIE INTRUSIONS

- MPM "Moyie Sills". Dark green to black, medium- to fine-grained gabbro and hornblende quartz diorite sills and minor dikes. Zircon U-Pb dates circa 1467 Ma (Anderson and Davis, 1995).