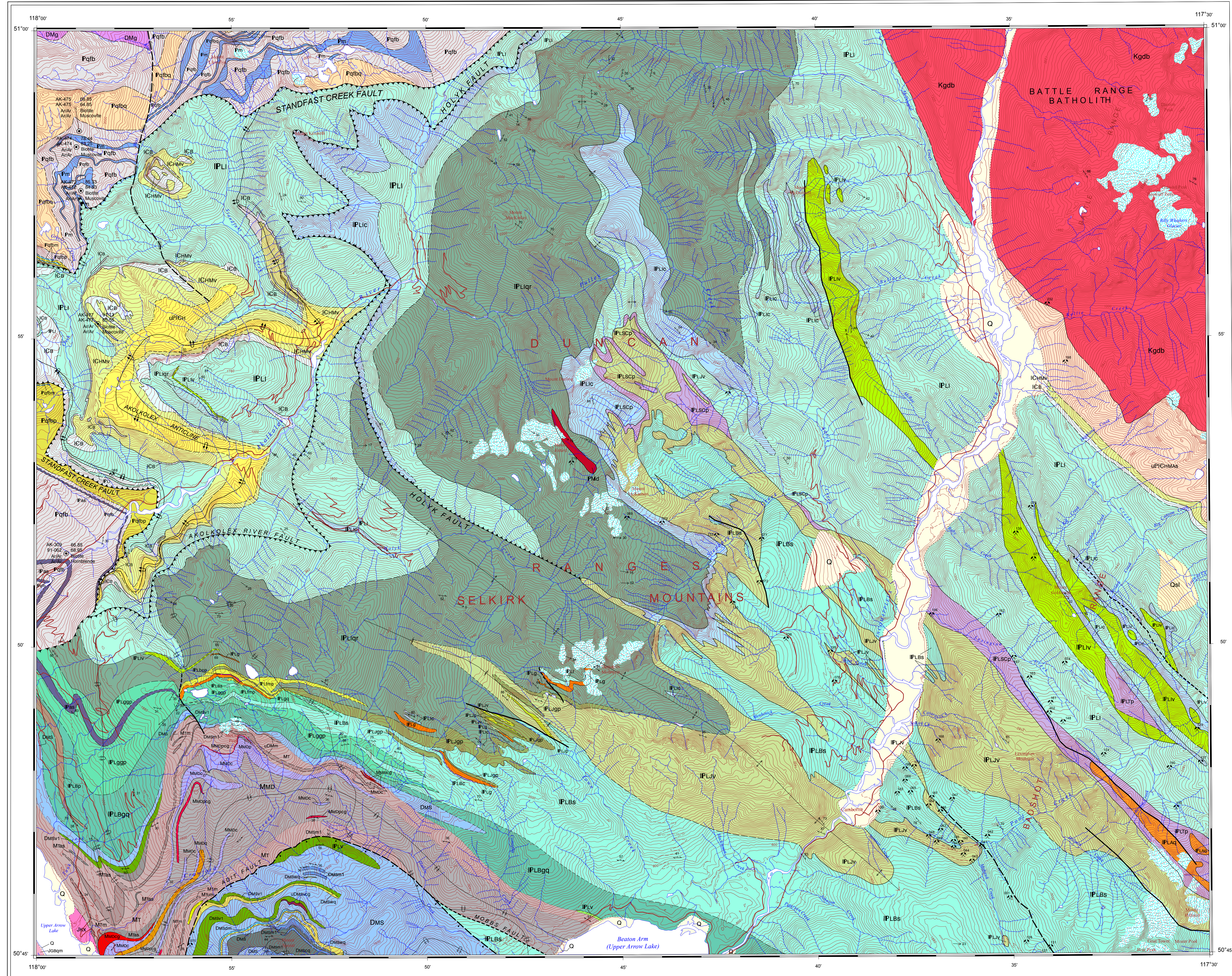


REFERENCES
Read, P.B., and Wheeler, J.O. 1976. Geology, Lethbridge westward, British Columbia (S2K-W2). Geological Survey of Canada, Open File Map 402, 1:250,000.
Seam, J.W. 1976. Isotopic contrasts between the Columbia orogen, Albert Peak area, western Yukon Mountains, British Columbia. PhD thesis, Queen's University, Ontario, Canada. 154 p. (Geological maps and cross sections in pocket)
Thompson, R.J. 1978. Geology of the Nahkoma River area, B.C. Ministry of Energy, Mines and Petroleum Resources, Bulletin 60, 77p.

MINERAL OCCURRENCE INDEX table with columns: MINFILE #, NAME, COMMODITY. Lists various mineral occurrences like Mohawk, Moscow, Eclipse, Spider, etc.

ACKNOWLEDGMENTS
This map is largely a compilation of geological mapping by P.B. Read, J.O. Wheeler, and R.J. Thompson. Recent mapping by Keith H. Bell, David G. Curran, and others is also acknowledged.

COMPILED SOURCES
1. Read and Wheeler (1976)
2. Seam (1976)
3. Thompson (1978)
4. Thompson (2007)
5. Kraft (2011)



This publication is available from the Geological Survey of Canada website:
http://www.nrc.ca/geoscan/index\_e.php
http://www.nrc.ca/geoscan/index\_e.php



OPEN FILE 6573
GEOLOGY
CAMBORNE
BRITISH COLUMBIA
Compilers: J.L. Kraft, R.J. Thompson and P. Doshi
Geology by: J.O. Wheeler, 1965-67; R.J. Thompson, 1969-70, 2006-07; P.B. Read, 1971-76; J.L. Kraft, 2006-08
Geological compilation by: R.J. Thompson, 2002 and J.L. Kraft, 2010
Digital cartography by: P. Doshi, Geological Survey of Canada, Pacific Division
Digital cartography by: P. Doshi, Geological Survey of Canada, Pacific Division
Any revisions or additional information known to the user would be welcomed by the Geological Survey of Canada.

Scale 1:500 000/Echelle 1/500 000
Universal Transverse Mercator Projection
North American Datum 1983
Projection transverse universelle de Mercator
Système de référence géodésique nord-américain 1983
© Her Majesty the Queen in Right of Canada 2011
© Sa Majesté la Reine en chef du Canada 2011
Zone 11
Elevations in feet above mean sea level
Contour interval 20 metres

Digital base map from data compiled by Geomatics Canada, modified by the Geological Survey of Canada - Pacific Division
Magnetic declination 2011, 16°46'E, decreasing 13.5' annually

Grid coordinates table showing UTM zone 11 coordinates for the map area.

SYMBOLS section containing various geological symbols for foliation, bedding, faults, and mineral occurrences.

OPEN FILE DOSSIER PUBLIC 6573
GEOLOGICAL SURVEY OF CANADA / COMMISSION GÉOLOGIQUE DU CANADA
2011
Open file or dossier public 6573
Les dossiers publics sont des produits de l'information qui sont disponibles en libre accès. Ils sont publiés en français et en anglais.

Recommended citation:
Kraft, J.L., Thompson, R.J., and Doshi, P., (compilers), 2011. Geology, Camborne, British Columbia. Geological Survey of Canada, Open File 6573, scale 1:500,000. doi: 10.4095/6573

LEGEND section detailing geological units and their descriptions, including Cenozoic, Mesozoic, Paleozoic, and various geological groups like the Battle Range Batholith and Selkirk Mountains.

ROCKS IN FOOTWALL OF STANDFAST CREEK FAULT and other rock descriptions, including Devonian, Cambrian, and Precambrian units.

ROCKS NORTH AND EAST OF MCRUR PEAK AREA and other rock descriptions, including Cambrian and Devonian units.