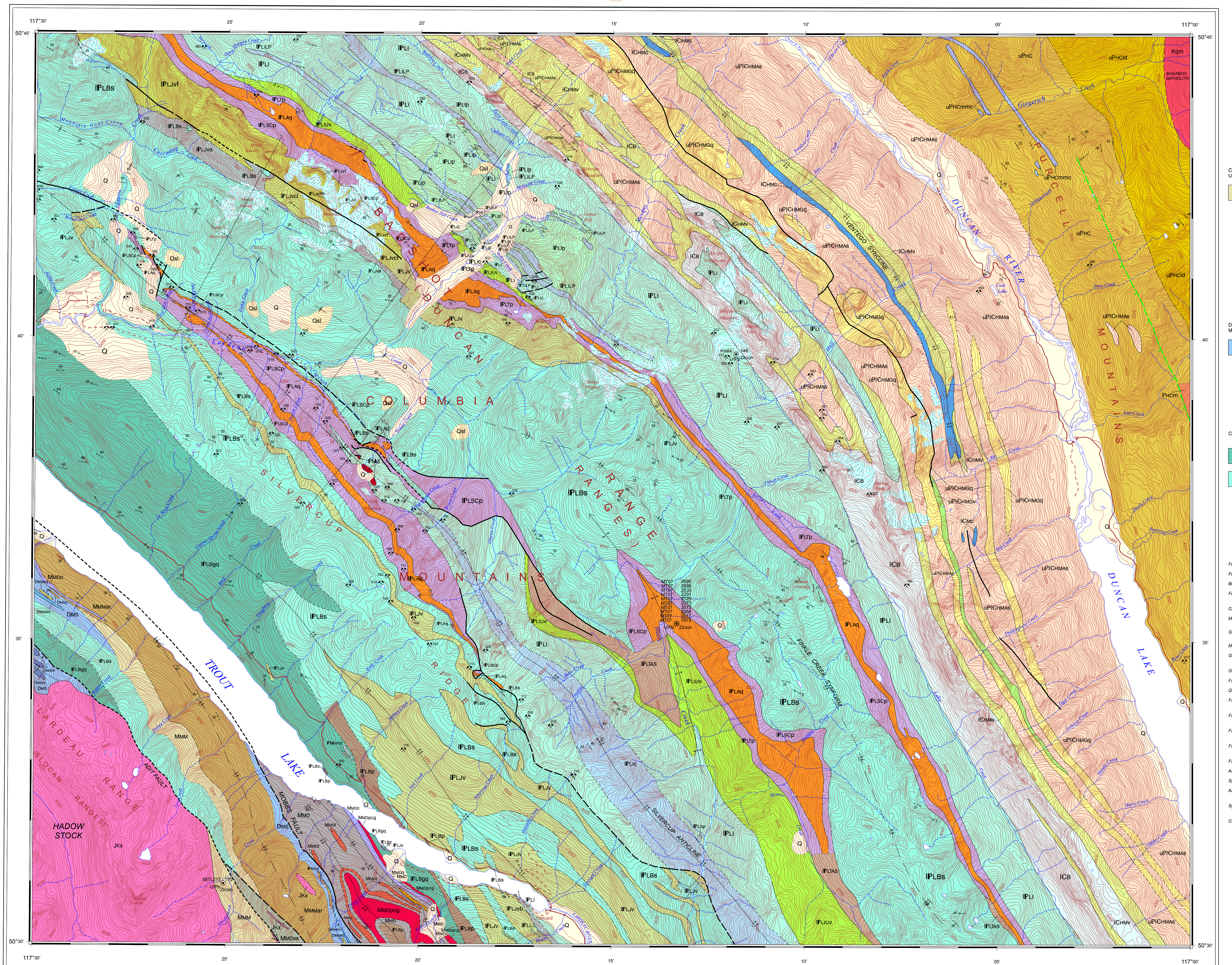


MINERAL OCCURRENCE INDEX

Table with 3 columns: MINFILE #, NAME, COMMODITY. Lists various mineral occurrences with their corresponding file numbers and commodity types.



LEGEND. A color-coded key for geological units and symbols, including Quaternary, Mesozoic, Paleozoic, and Cambrian-Devonian units.

SYMBOLS. A key for geological symbols and patterns, including foliation, faults, and mineralization symbols.

INDEX FORMATION. A detailed list of geological formations with their corresponding colors and symbols, such as the JONETI FORMATION, IPLVA, IPLVD, etc.

LOWER CAMBRIAN. A list of geological units from the Lower Cambrian period, including the ICB, HAMILL GROUP, and MOCHICA FORMATION.

EDUCARIAN AND/OR LOWER CAMBRIAN. A list of geological units from the Educarian and Lower Cambrian periods, including the EDUCARIAN GROUP and MARCH ADAMS FORMATION.

NEOPROTEROZOIC (BADSTUBEN) WESTERFELS SUPERGROUP HORSESHOE GROUP. A list of geological units from the Neoproterozoic Westerstels Supergroup, including the UPHC and UPHCR formations.



OPEN FILE 6572 GEOLOGY TROUT LAKE BRITISH COLUMBIA. Includes metadata such as scale, projection, and contact information.

Compilers: J.L. Kraft, R.I. Thompson and P. Dhesi. Includes a list of geologists and their contributions to the map.

Digital base map from data compiled by Geomatics Canada. Includes information about the map's digital nature and data sources.

Scale 1:50 000/Echelle 1:50 000. Includes scale bars and information about the map's scale.

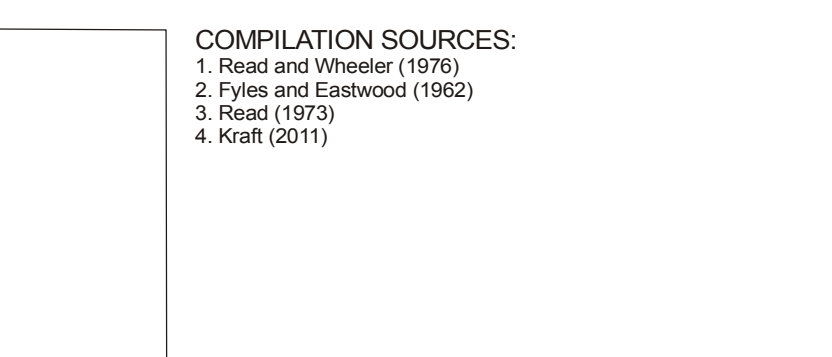
Elevations in feet above mean sea level. Includes information about the map's elevation data and contour lines.

Map scale and projection information. Includes details about the map's scale and the projection used.

Map scale and projection information. Includes details about the map's scale and the projection used.

Map scale and projection information. Includes details about the map's scale and the projection used.

Map scale and projection information. Includes details about the map's scale and the projection used.



OPEN FILE DOSSIER PUBLIC 6572. Includes information about the map's status as an open file and public dossier.

Recommended citation. Includes the recommended citation for the map.

Recommended citation. Includes the recommended citation for the map.