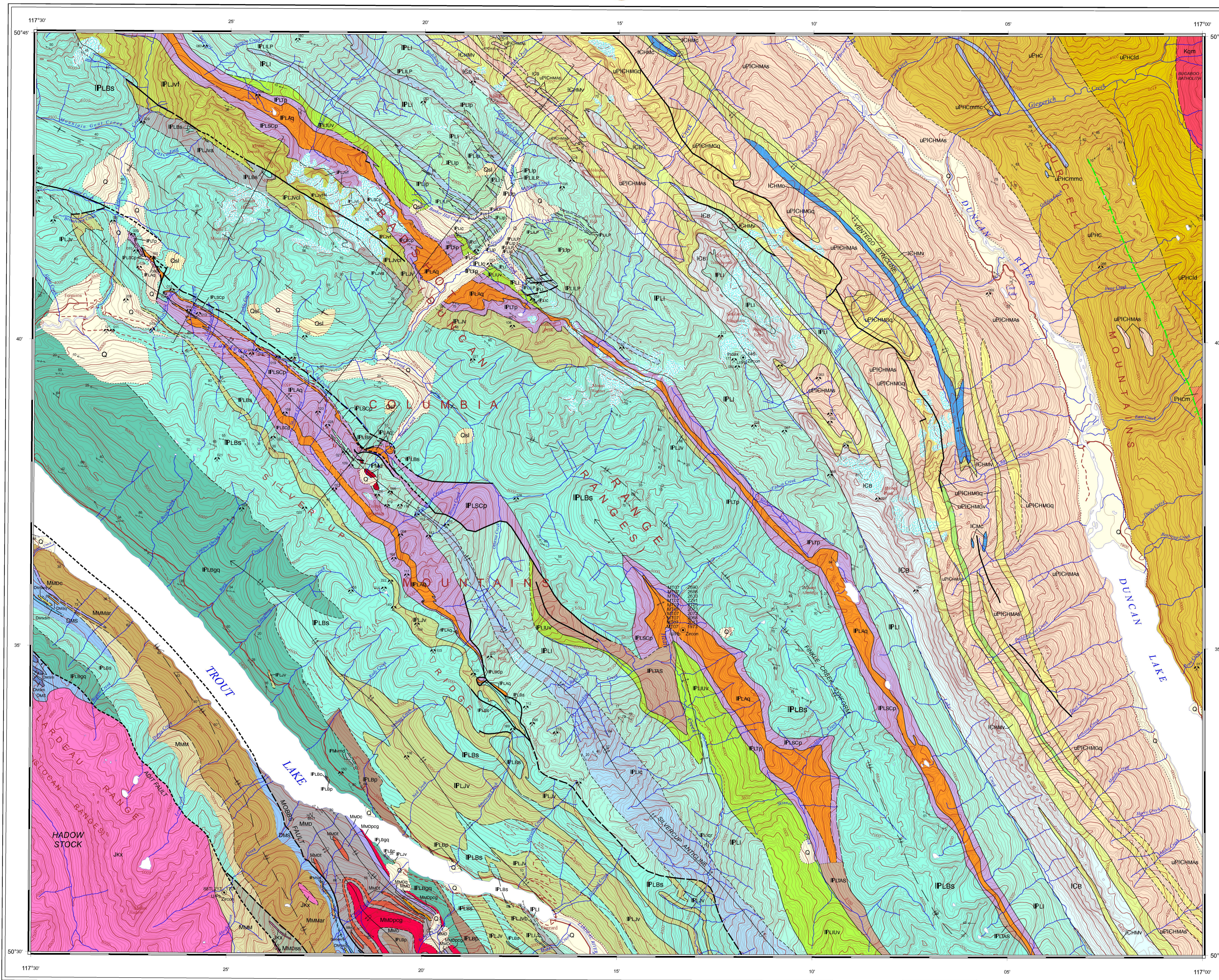


MINERAL OCCURRENCE INDEX

Table with 3 columns: MINFILE #, NAME, COMMODITY. Lists various mineral occurrences such as REVENUE, SLEAZE, GYP FER, etc.



Legend section detailing geological units and their symbols. Includes categories like Quaternary, Mesozoic, Paleozoic, Carboniferous, and Devonian, with specific unit names and descriptions.

Legend section detailing geological units and their symbols. Includes categories like Devonian, Cambrian, and Lower Cambrian, with specific unit names and descriptions.

Legend section detailing geological units and their symbols. Includes categories like Lower Cambrian, Middle Cambrian, and Upper Cambrian, with specific unit names and descriptions.

Legend section detailing geological units and their symbols. Includes categories like Upper Cambrian, Lower Devonian, and Middle Devonian, with specific unit names and descriptions.

Legend section detailing geological units and their symbols. Includes categories like Upper Devonian, Lower Carboniferous, and Middle Carboniferous, with specific unit names and descriptions.

Legend section detailing geological units and their symbols. Includes categories like Upper Carboniferous, Lower Permian, and Middle Permian, with specific unit names and descriptions.

REFERENCES section listing various scientific publications related to the geological study of the area, including authors like Bond, G., and others.

DESCRIPTIVE NOTES section providing detailed information about the geological units, their characteristics, and the methods used in the study.

STRATIGRAPHY section detailing the stratigraphic column and the relative positions of the various geological units.

ACKNOWLEDGMENTS section acknowledging the contributions of various individuals and organizations to the project.

OPEN FILE DOSSIER PUBLIC 6572 section providing information about the file number, date, and contact details for the Geological Survey of Canada.

Source: British Columbia Ministry of Energy and Mines, MINFILE database available at: http://www.geog.ca/energy/geology/minfile/

Map metadata section including title 'TROUT LAKE BRITISH COLUMBIA', scale, projection, and other technical details.

Table with 3 columns: Unit Code, Unit Name, Unit Description. Lists geological units like IFLB, IFLV, etc.