

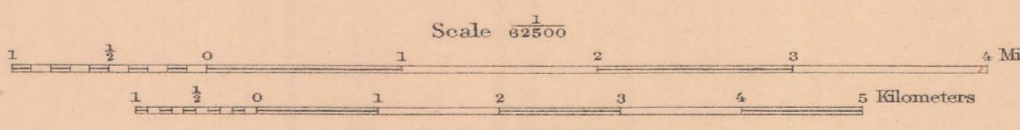
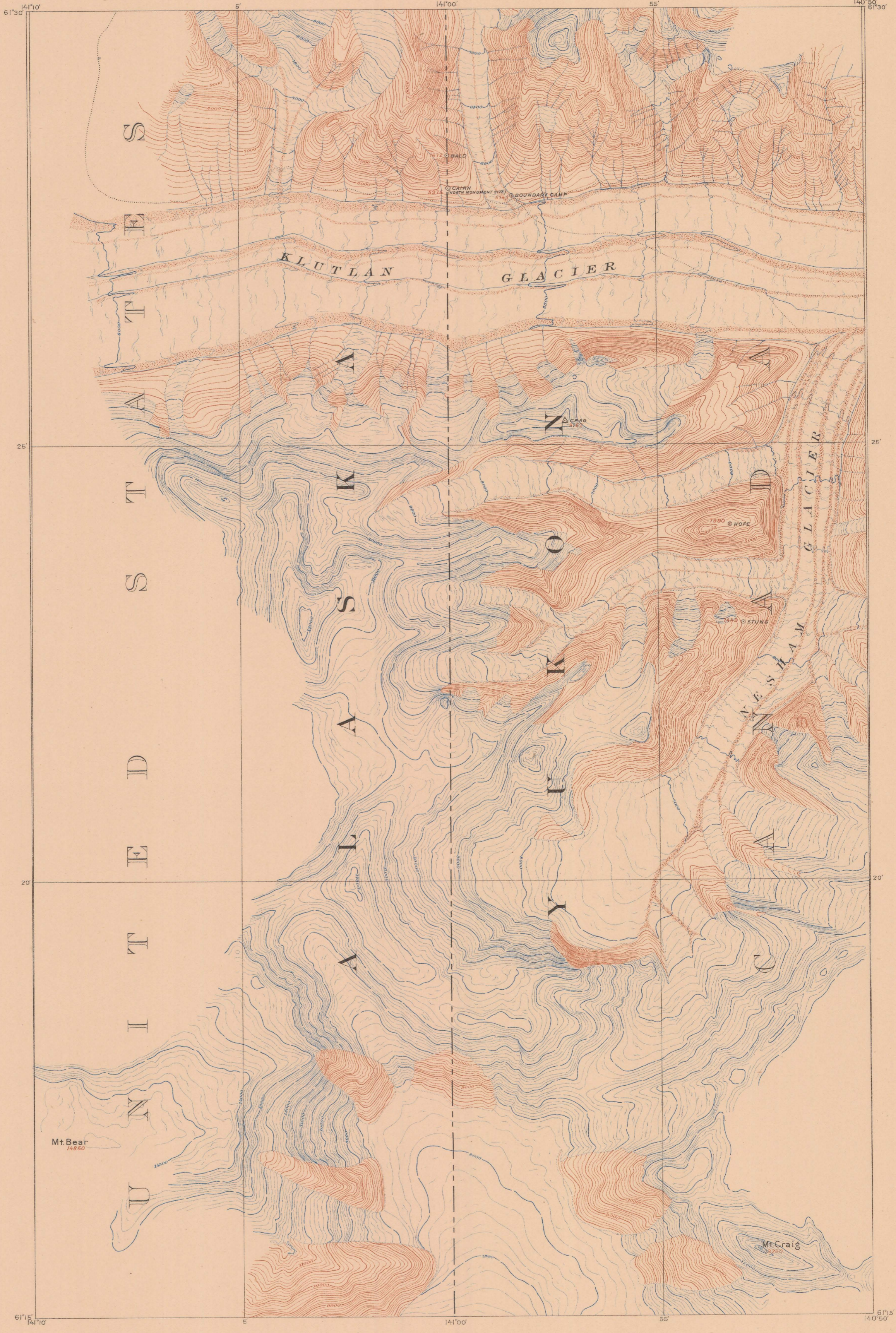
INTERNATIONAL BOUNDARY

ALONG THE

141<sup>ST</sup> MERIDIAN

SHEET No. 34

SURVEYED UNDER THE DIRECTION OF  
UNITED STATES COMMISSIONER O. H. TITTMANN HIS BRITANNIC MAJESTY'S COMMISSIONER W. F. KING



FOR THE UNITED STATES  
D. W. EATON, SURVEYOR IN CHARGE.  
TOPOGRAPHY BY D. W. EATON  
SURVEYED IN 1912-13.

Contour interval 100 feet.  
Datums in mean sea level.

FOR HIS MAJESTY  
J. D. CRAIG, D. L. S., SURVEYOR IN CHARGE.  
TRIANGULATION BY FREDERICK LAMBART, D. L. S., AND E. W. NESHAM, D. L. S.  
LINE PROJECTION BY FREDERICK LAMBART, D. L. S., AND E. W. NESHAM, D. L. S.  
TOPOGRAPHY BY FREDERICK LAMBART, D. L. S., AND E. W. NESHAM, D. L. S.

Boundary Monuments  
Large   
Small   
Boundary Line

We certify that this map is a copy of Sheet No. 34 of the thirty-eight (38) maps, prepared and adopted by the Commissioners designated above, under Article II of the Convention between Great Britain and the United States, signed at Washington April 21st, 1906, on which sheet we marked the Boundary Line as established in accordance with said Convention.

*E. C. Barnard*  
United States Commissioner

*J. D. Craig*  
His Britannic Majesty's Commissioner

Camera Stations   
Route Traveled

Date of publication, 1917

SHEET NO. 34