

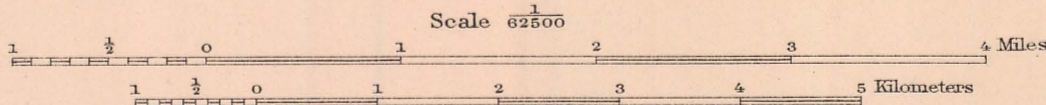
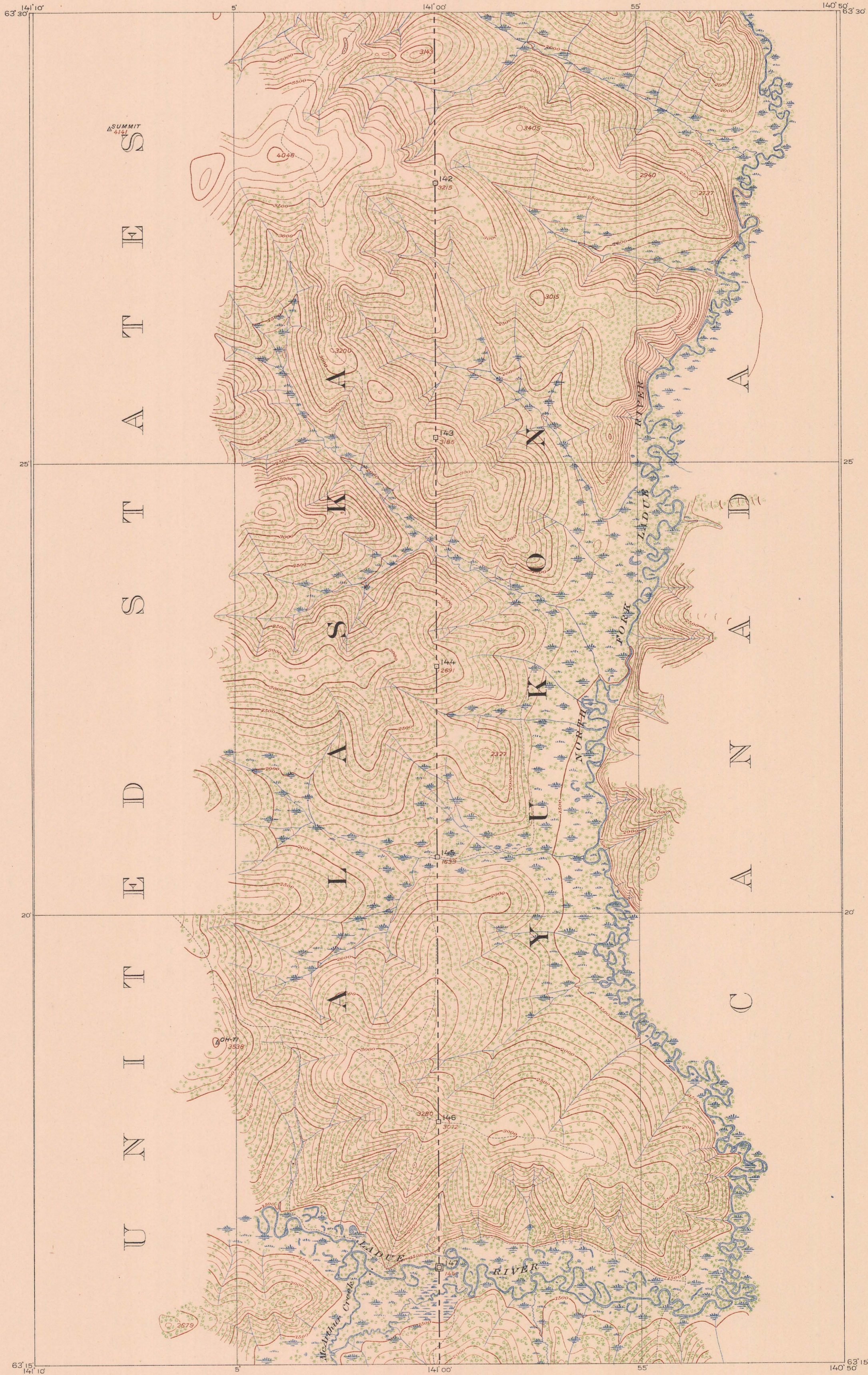
INTERNATIONAL BOUNDARY

ALONG THE

141ST MERIDIAN

SHEET No. 26

SURVEYED UNDER THE DIRECTION OF
UNITED STATES COMMISSIONER O. H. TITTMANN HIS BRITANNIC MAJESTY'S COMMISSIONER W. F. KING



FOR THE UNITED STATES
THOMAS RIGGS, JR., SURVEYOR IN CHARGE.
G. C. BALDWIN, SURVEYOR IN CHARGE.
LINE PROJECTION BY G. C. BALDWIN.
TRIANGULATION BY THOMAS RIGGS, JR.
TOPOGRAPHY BY A. I. OLIVER.
INSPECTION BY THOMAS RIGGS, JR.
SURVEYED IN 1907-08.

Scale 62500
Contour interval 100 feet.
Datum is 38 feet above mean sea level.
Boundary Monuments
Large
Small
Boundary Line

FOR HIS MAJESTY
A. J. BRABAZON, D. L. S., SURVEYOR IN CHARGE.
FREDERICK LAMBART, D. L. S., SURVEYOR IN CHARGE.
LINE PROJECTION BY A. J. BRABAZON, D. L. S.
TRIANGULATION BY FREDERICK LAMBART, D. L. S.
MONUMENTING BY FREDERICK LAMBART, D. L. S., IN 1910.
INSPECTION BY J. D. CRAIG, D. L. S.

We certify that this map is a copy of Sheet No. 26 of the thirty-eight (38) maps, prepared and adopted by us under Article II of the Convention between Great Britain and the United States, signed at Washington April 21st, 1906, on which we marked the Boundary Line as established in accordance with said Convention.

O. H. Tittmann
United States Commissioner

W. F. King
His Britannic Majesty's Commissioner