

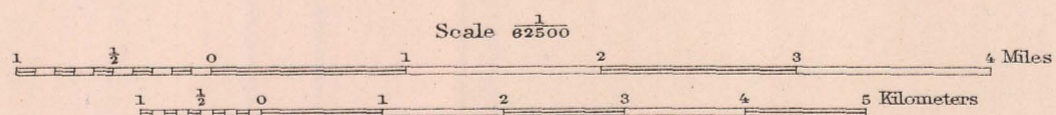
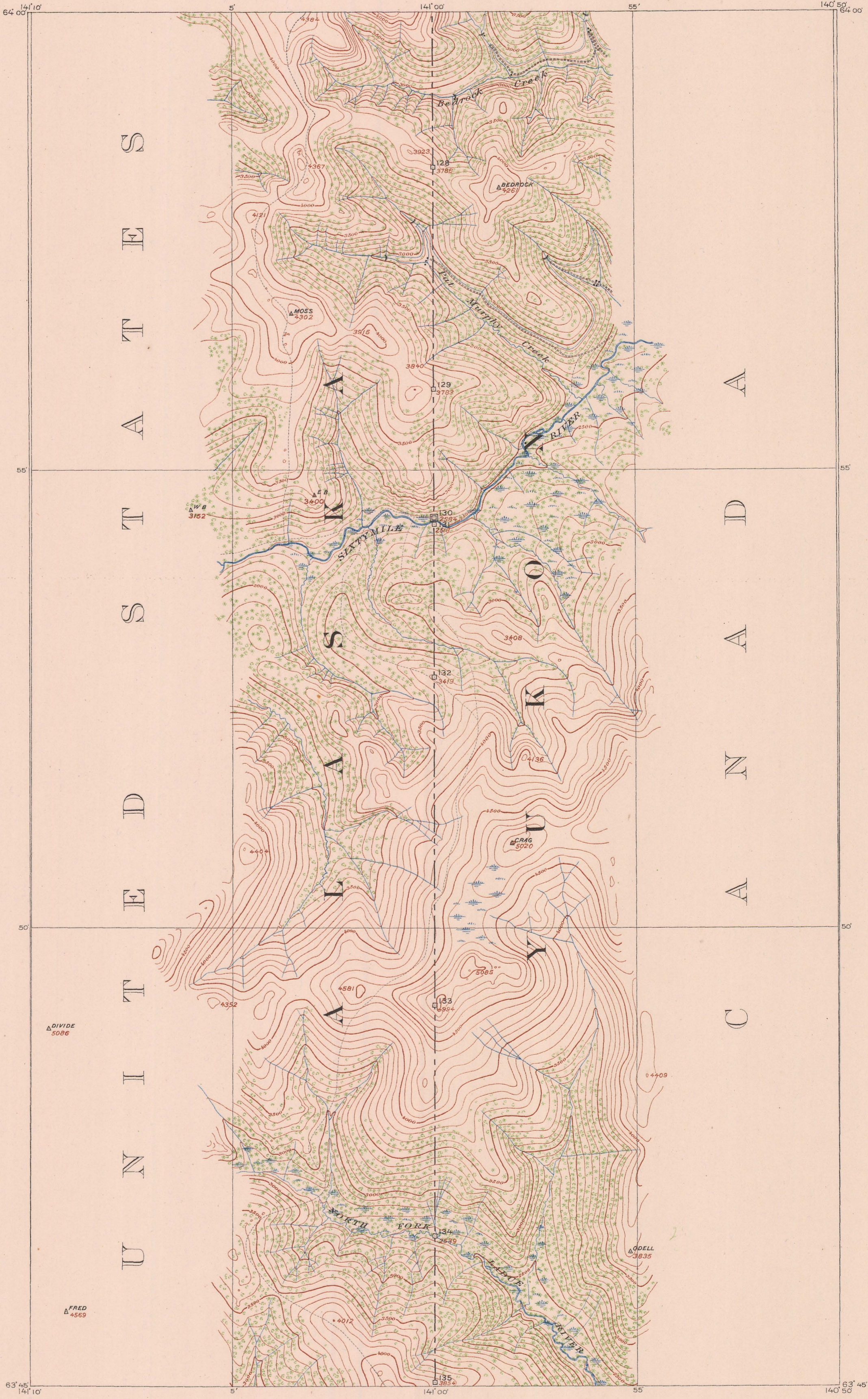
INTERNATIONAL BOUNDARY

ALONG THE

141ST MERIDIAN

SHEET No. 24

SURVEYED UNDER THE DIRECTION OF
UNITED STATES COMMISSIONER O. H. TITTMANN HIS BRITANNIC MAJESTY'S COMMISSIONER W. F. KING



Contour interval 100 feet.
Datum is 38 feet above mean sea level.

Boundary Monuments
Large
Small
Boundary Line

FOR THE UNITED STATES
THOMAS RIGGS, JR., SURVEYOR IN CHARGE.
G. C. BALDWIN, SURVEYOR IN CHARGE.
LINE PROJECTION BY G. C. BALDWIN.
TRIANGULATION BY THOMAS RIGGS, JR. AND WM. B. GILMORE.
TOPOGRAPHY BY A. I. OLIVER.
INSPECTION BY THOMAS RIGGS, JR.
SURVEYED IN 1907-08.

FOR HIS MAJESTY
A. J. BRABAZON, D. L. S., SURVEYOR IN CHARGE.
LINE PROJECTION BY A. J. BRABAZON, D. L. S.
MONUMENTING BY A. J. BRABAZON, D. L. S., IN 1908.
MONUMENTING BY FREDERICK LAMBERT, D. L. S., IN 1910.
INSPECTION BY J. D. CRAIG, D. L. S.

We certify that this map is a copy of Sheet No. 24 of the thirty-eight (38) maps, prepared and adopted by us under Article II of the Convention between Great Britain and the United States, signed at Washington April 21st, 1906, on which we marked the Boundary Line as established in accordance with said Convention.

O. H. Tittmann
United States Commissioner

W. F. King
His Britannic Majesty's Commissioner

Date of publication, 1914

SHEET NO. 24

PRINTED BY THE U. S. GEOLOGICAL SURVEY