

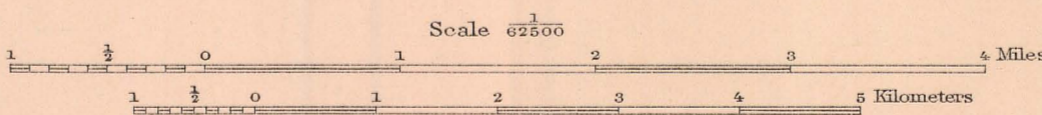
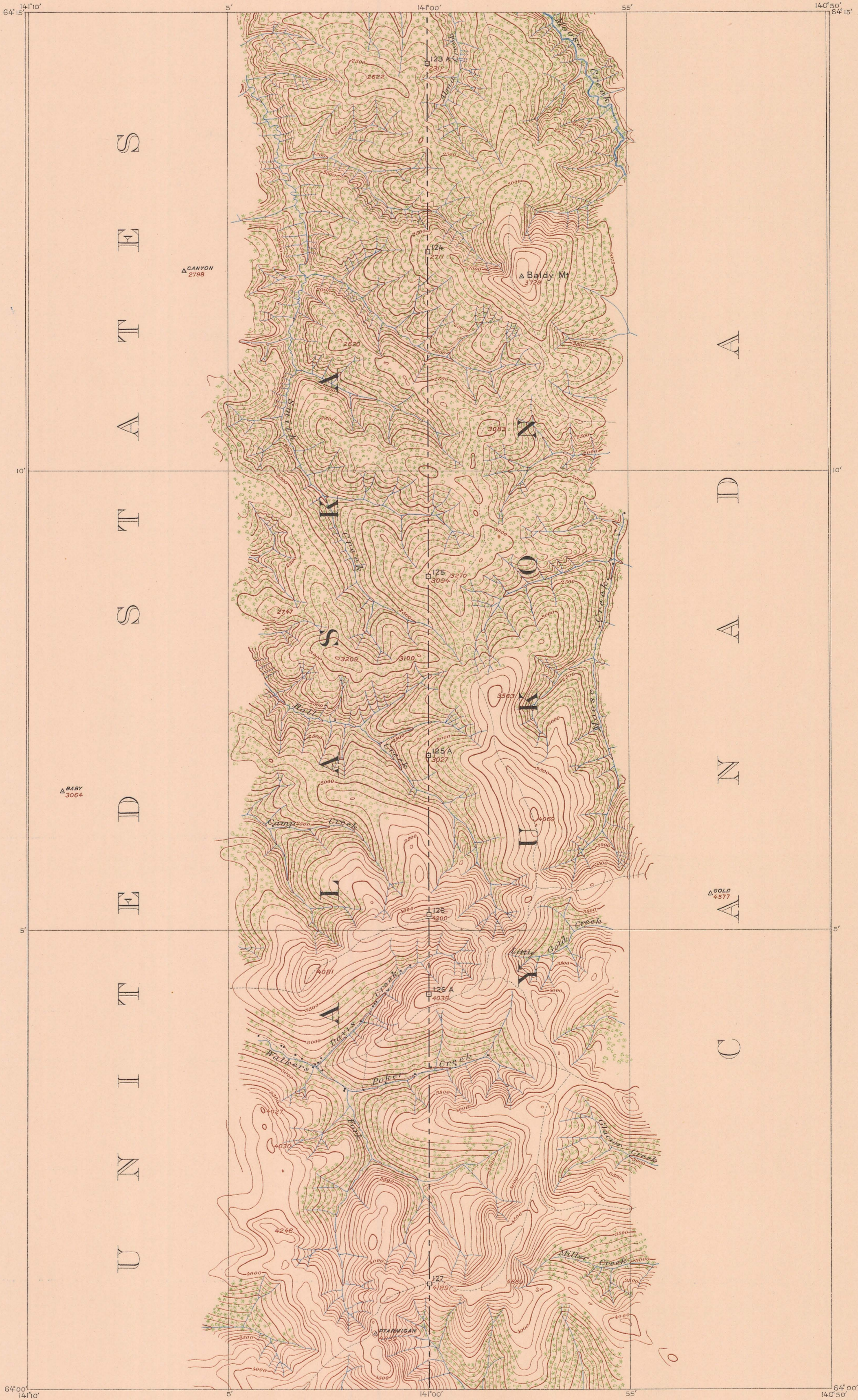
INTERNATIONAL BOUNDARY

ALONG THE

141ST MERIDIAN

SHEET No. 23

SURVEYED UNDER THE DIRECTION OF  
UNITED STATES COMMISSIONER O. H. TITTMANN HIS BRITANNIC MAJESTY'S COMMISSIONER W. F. KING



FOR THE UNITED STATES  
THOMAS RIGGS, JR., SURVEYOR IN CHARGE.  
G. C. BALDWIN, SURVEYOR IN CHARGE.  
LINE PROJECTION BY G. C. BALDWIN.  
TRIANGULATION BY THOMAS RIGGS, JR. AND WM. B. GILMORE.  
TOPOGRAPHY BY A. I. OLIVER.  
INSPECTION BY THOMAS RIGGS, JR.  
SURVEYED IN 1907.

Contour interval 100 feet.  
Datum is 39 feet above mean sea level.

Boundary Monuments  
Large   
Small   
Boundary Line

FOR HIS MAJESTY  
A. J. BRABAZON, D. L. S., SURVEYOR IN CHARGE.  
LINE PROJECTION BY A. J. BRABAZON, D. L. S.  
MONUMENTING BY A. J. BRABAZON, D. L. S. IN 1908.  
INSPECTION BY J. D. CRAIG, D. L. S.

We certify that this map is a copy of Sheet No. 23 of the thirty-eight (38) maps, prepared and adopted by us under Article II of the Convention between Great Britain and the United States, signed at Washington April 21st, 1906, on which we marked the Boundary Line as established in accordance with said Convention.

*O. H. Tittmann*  
United States Commissioner

*W. F. King*  
His Britannic Majesty's Commissioner