

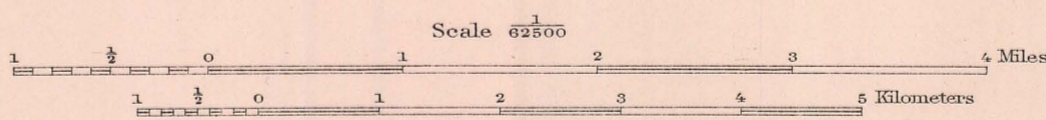
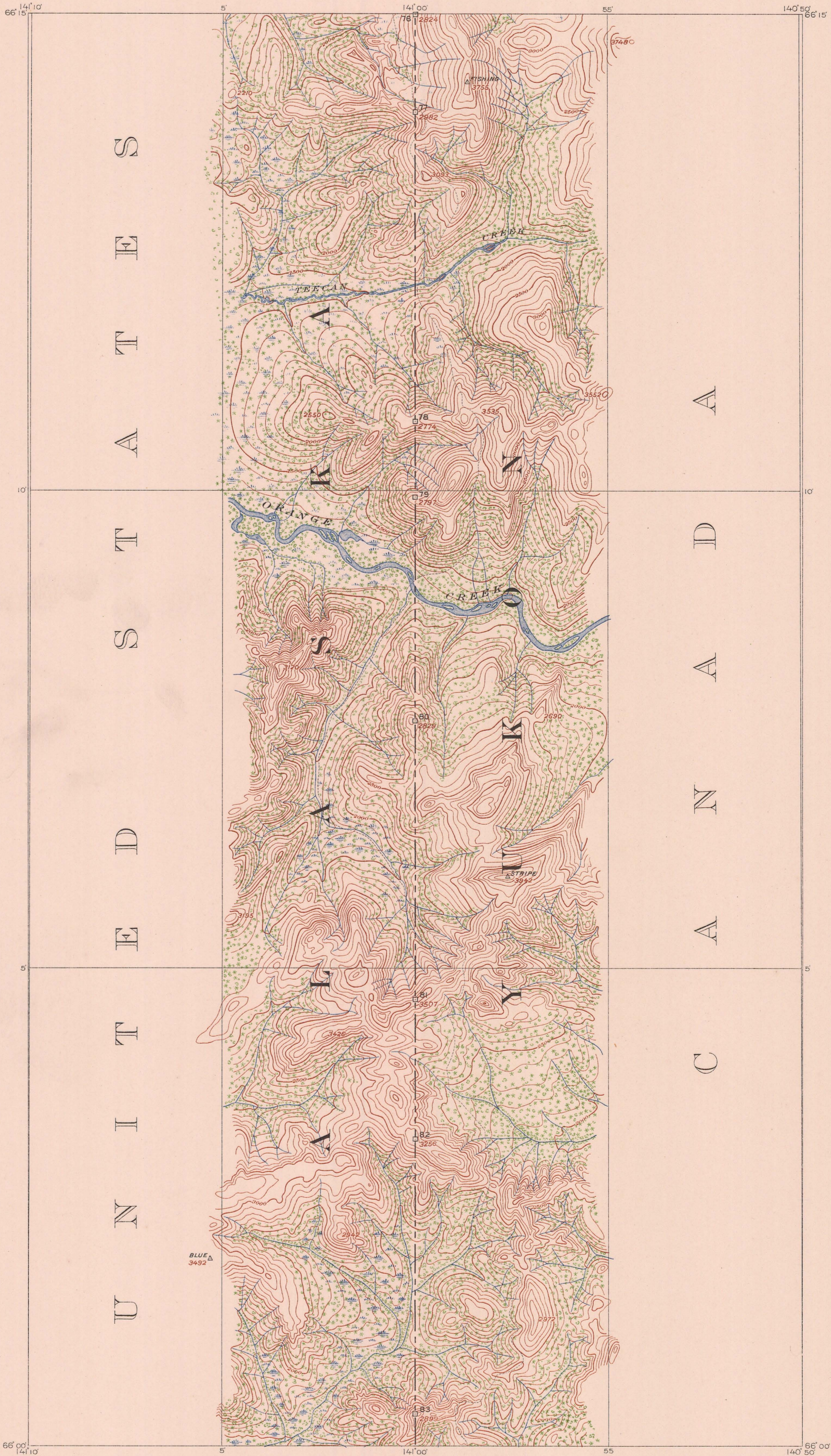
INTERNATIONAL BOUNDARY

ALONG THE

141ST MERIDIAN

SHEET No. 15

SURVEYED UNDER THE DIRECTION OF
UNITED STATES COMMISSIONER O. H. TITTMANN
HIS BRITANNIC MAJESTY'S COMMISSIONER W. F. KING



FOR THE UNITED STATES
THOMAS RIGGS, JR., ENGINEER IN CHARGE.
LINE PROJECTION BY A. C. BALDWIN.
TRIANGULATION BY A. I. OLIVER.
TOPOGRAPHY BY W. C. GUERIN AND F. S. RYUS.
INSPECTION BY THOMAS RIGGS, JR.
SURVEYED IN 1910.

FOR HIS MAJESTY
J. D. CRAIG, D. L. S., SURVEYOR IN CHARGE.
LINE PROJECTION BY J. D. CRAIG, D. L. S.
TRIANGULATION BY A. G. STEWART, D. L. S.
MONUMENTING BY A. G. STEWART, D. L. S. IN 1911.
INSPECTION BY J. D. CRAIG, D. L. S.

Boundary Monuments
Large
Small
Boundary Line

We certify that this map is a copy of Sheet No. 15 of the thirty-eight (38) maps, prepared and adopted by us under Article II of the Convention between Great Britain and the United States, signed at Washington April 21st, 1906, on which we marked the Boundary Line as established in accordance with said Convention.

O. H. Tittmann
United States Commissioner

W. F. King
His Britannic Majesty's Commissioner

Date of publication 1914

SHEET NO. 15

PRINTED BY THE U.S. GEOLOGICAL SURVEY