

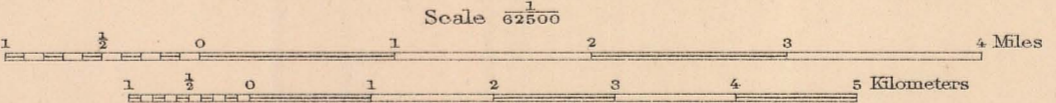
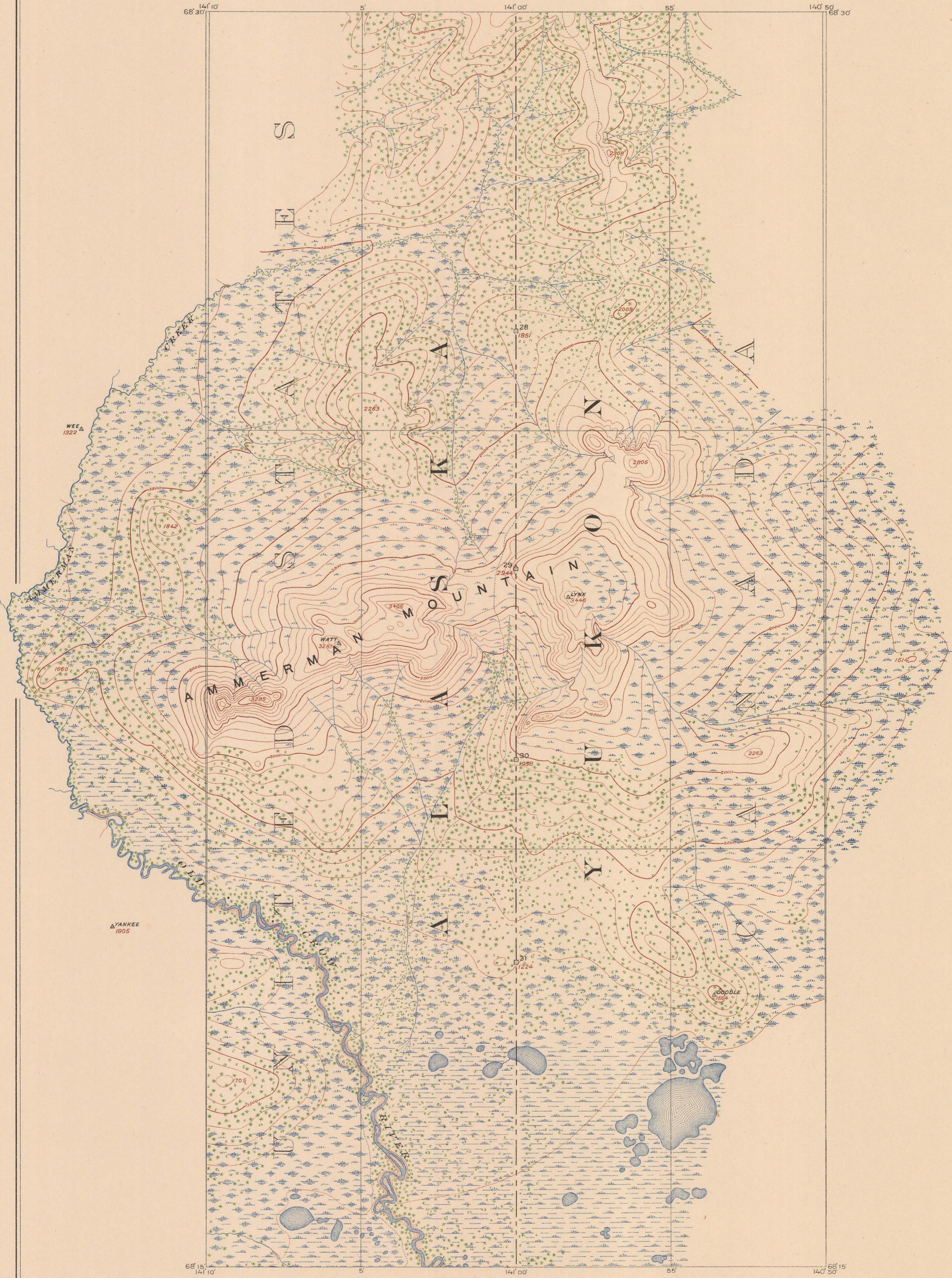
INTERNATIONAL BOUNDARY

ALONG THE

141ST MERIDIAN

SHEET No. 6

SURVEYED UNDER THE DIRECTION OF
UNITED STATES COMMISSIONER O. H. TITTMANN
HIS BRITANNIC MAJESTY'S COMMISSIONER W. F. KING



FOR THE UNITED STATES
THOMAS RIGGS, JR., ENGINEER IN CHARGE.
LINE PROJECTION BY WM. B. GILMORE.
TRIANGULATION BY A. C. BALDWIN.
TOPOGRAPHY BY W. C. GUERIN.
INSPECTION BY THOMAS RIGGS, JR.
SURVEYED IN 1911.

FOR HIS MAJESTY
J. D. CRAIG, D. L. S., SURVEYOR IN CHARGE.
LINE PROJECTION BY D. H. NELLES, D. L. S.
TRIANGULATION BY FREDERICK LAMBART, D. L. S.
MONUMENTING BY FREDERICK LAMBART, D. L. S., IN 1911-12.
INSPECTION BY J. D. CRAIG, D. L. S.

Contour interval 100 feet.
Datum is 15 feet below mean sea level.
Boundary Monuments
Large
Small
Boundary Line

We certify that this map is a copy of Sheet No. 6 of the thirty-eight (38) maps, prepared and adopted by us under Article II of the Convention between Great Britain and the United States, signed at Washington April 21st, 1906, on which we marked the Boundary Line as established in accordance with said Convention.

O. H. Tittmann
United States Commissioner

W. F. King
His Britannic Majesty's Commissioner

Date of publication, 1914.

SHEET NO. 6

PRINTED BY THE GEOLOGICAL SURVEY