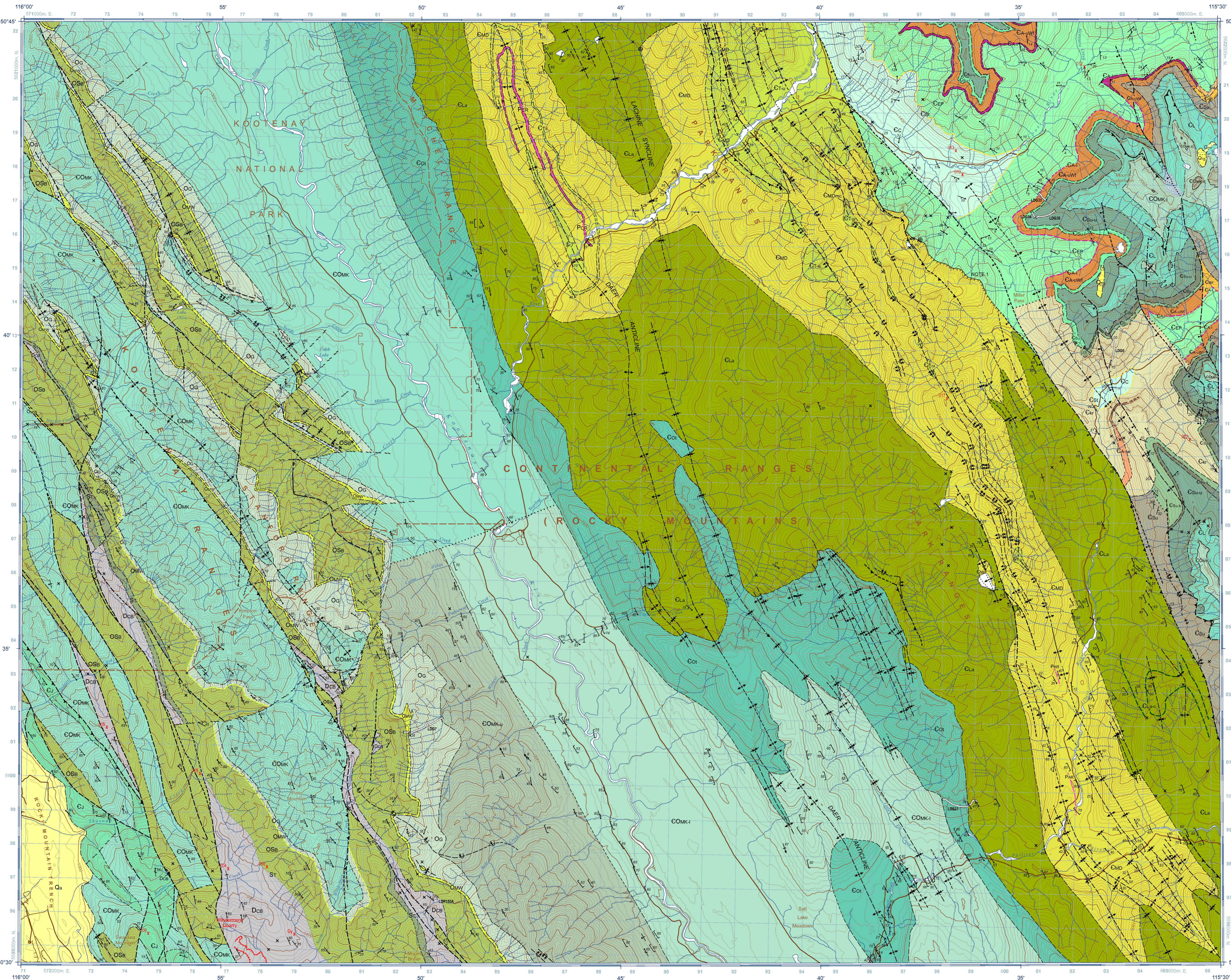


Geological contact symbols, Syncline symbols, Fault symbols, and other geological symbols with their respective definitions.



Geological legend and descriptions for various geological units and formations, including Quaternary, Paleozoic, Middle Devonian, Lower Silurian, and Cambrian units.

Abstract: Tangle Peak map area (NTS 82-112, 1:50 000 scale) stratifies portions of the Main Ranges and Western Ranges subdivisions of the southern Canadian Rocky Mountains...

Table with 2 columns: National Topographic System reference and index to adjoining published Geological Survey Canada maps.

Cover illustration: Tangle Peak map area (NTS 82-112, 1:50 000 scale) stratifies portions of the Main Ranges and Western Ranges subdivisions of the southern Canadian Rocky Mountains...

Canadian Geoscience Map 12: Tangle Peak, British Columbia, 1:50 000 scale. Includes the Canadian Geoscience logo and map title.

Canadian Geoscience Maps / Cartes géoscientifiques du Canada logo and branding.

Geological compilation by M.E. McMechan, 2009-2010. Cartography by E. Massey. Scientific editing by E. Inglis. Conducted under the auspices of the Targeted Geoscience Initiative (TGI).

Geology Tangle Peak, British Columbia, 1:50 000 scale. Map projection: Universal Transverse Mercator, zone 11, North American Datum 1983. Base map at the scale of 1:50 000 from Natural Resources Canada, with modifications.

The Geological Survey of Canada welcomes corrections or additional information from users. This publication, including digital data, can be downloaded free of charge from GeoArchive.

Table 1. British Columbia MINFILE occurrences. Table with columns: MINFILE No., NAME, STATUS, COMMODITY. Includes references and recommended citation.