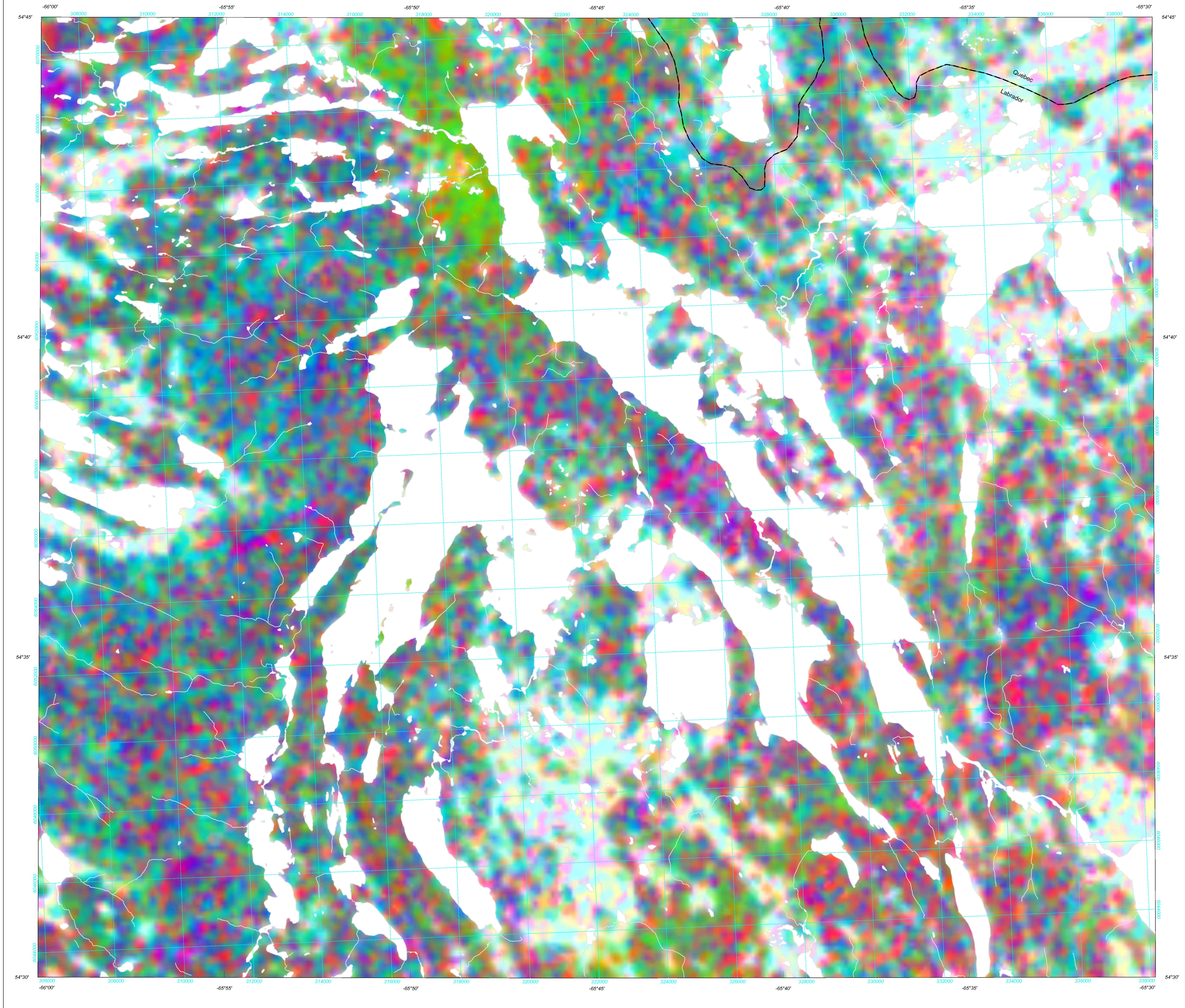


GEOPHYSICAL SERIES / SÉRIE DES CARTES GÉOPHYSIQUES

SÉRIE DES CARTES GÉOPHYSIQUES / DIAGRAMME TERNAIRE DES RADIOÉLÉMENTS



Quantitative gamma-ray spectrometric and aeromagnetic airborne geophysical survey was completed by Fugro Airborne Surveys over Schefferville, over areas located in Newfoundland and Labrador and Québec. The survey was flown from May 24th to Aug 30th, 2009 using two Cessna 208B Caravan aircraft (C-GNCA and C-GFAY) and one Cessna 441 Titan aircraft (C-FYAU).

The potassium is measured directly from the 1460 keV gamma-ray photons emitted by ⁴⁰K, whereas uranium and thorium are measured indirectly from gamma-ray photons emitted by daughter products (Bi²¹⁴ for uranium and ²¹⁴Pb for thorium). Although these daughters are far down their respective decay chains, they are assumed to be in equilibrium with their parents.

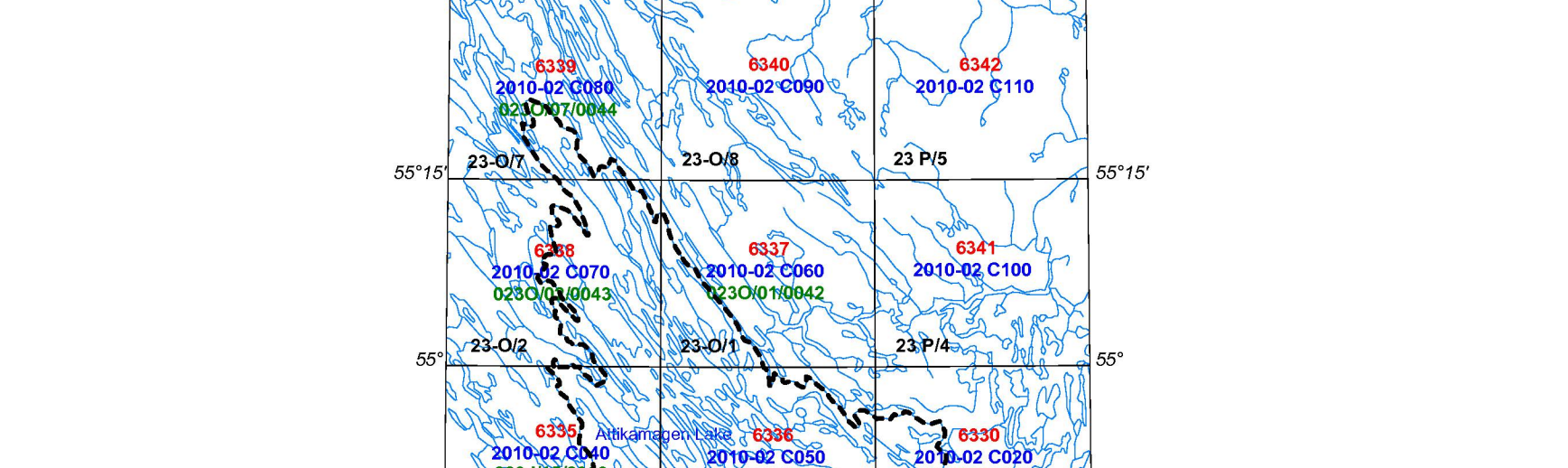
The magnetic field was sampled 10 times per second using a split-beam cesium vapour magnetometer (sensitivity = 0.005 nT) rigidly mounted to the aircraft. Differences in magnetic values at the intersections of control and traverse lines were computer-analysed to obtain a mutually leveled set of flight-line magnetic data.

The potassium is measured directly from the 1460 keV gamma-ray photons emitted by ⁴⁰K, whereas uranium and thorium are measured indirectly from gamma-ray photons emitted by daughter products (Bi²¹⁴ for uranium and ²¹⁴Pb for thorium).

The potassium is measured directly from the 1460 keV gamma-ray photons emitted by ⁴⁰K, whereas uranium and thorium are measured indirectly from gamma-ray photons emitted by daughter products (Bi²¹⁴ for uranium and ²¹⁴Pb for thorium).

PLANIMETRIC SYMBOLS / SYMBOLES PLANIMÉTRIQUES table with symbols for Roads, Railway, Power Line, Drainage, Routes, Chemin de fer, Ligne de transport d'énergie, Drainage.

OSG Open File Numbers in Red-Numéros de dossiers publics de la CGC en rouge / Québec Open File Numbers in Blue-Numéros de dossiers publics du Québec en bleu



NATIONAL TOPOGRAPHIC SYSTEM REFERENCE AND GEOPHYSICAL MAP INDEX / SYSTÈME NATIONAL CARTOGRAPHIQUE ET INDEX DES CARTES GÉOPHYSIQUES

LAKE ATTIKAMAGEN GEOPHYSICAL SURVEY SCHEFFERVILLE REGION / LEVÉ GÉOPHYSIQUE DU LAC ATTIKAMAGEN RÉGION DE SCHEFFERVILLE

MAP SHEET SUMMARY / SOMMAIRE DES FEUILLETS, OPEN FILE DOSSIER PUBLIC 6329, SHEET 8 OF 10, and contact information for the Geological Survey of Canada and Québec.

This airborne geophysical survey and the production of this map were funded by the Geomapping for Energy and Minerals (GEM) Program of the Earth Sciences Sector, Natural Resources Canada.

GSC OPEN FILE 6329 / DOSSIER PUBLIC 6329 DE LA CGC / NEWFOUNDLAND AND LABRADOR DEPARTMENT OF NATURAL RESOURCES, GEOLOGICAL SURVEY OPEN FILE 0231/12/0097

GEOPHYSICAL SERIES / SÉRIE DES CARTES GÉOPHYSIQUES / NTS 23-I/12 / SNRC 23-I/12

LAKE ATTIKAMAGEN GEOPHYSICAL SURVEY SCHEFFERVILLE REGION / LEVÉ GÉOPHYSIQUE DU LAC ATTIKAMAGEN RÉGION DE SCHEFFERVILLE

TERNARY RADIOELEMENT MAP / DIAGRAMME TERNAIRE DES RADIOÉLÉMENTS

Authors: R. Dumont, R. Fortin, S. Hefford and F. Dostaler

Auteurs: R. Dumont, R. Fortin, S. Hefford et F. Dostaler

Data acquisition, compilation and map production by Fugro Airborne Surveys, Ottawa, Ontario. Contact and project management by the Geological Survey of Canada, Ottawa, Ontario.

L'acquisition, la compilation des données ainsi que la production des cartes furent effectuées par Fugro Airborne Surveys, Ottawa, Ontario. La gestion et la supervision du projet furent effectuées par la Commission géologique du Québec, Ottawa, Ontario.

Scale 1:50 000 - Échelle 1/50 000



United Nations Economic Commission for Europe / Commission économique des Nations Unies pour l'Europe