

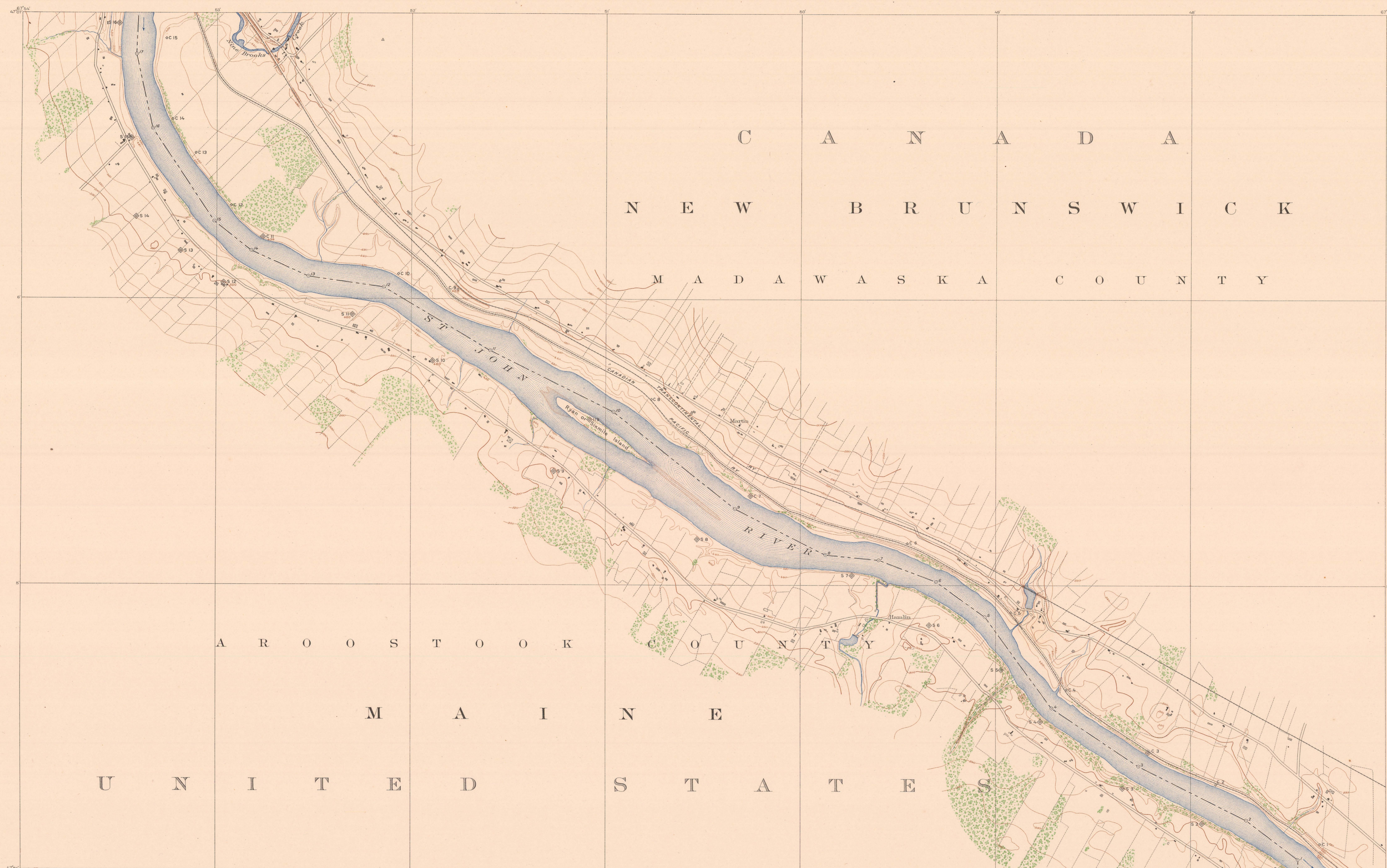
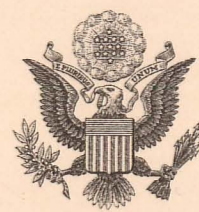
INTERNATIONAL BOUNDARY

FROM THE ST. LAWRENCE RIVER
TO THE SOURCE OF THE ST. CROIX RIVER

SHEET No. 57

SURVEYED UNDER THE DIRECTION OF
UNITED STATES COMMISSIONER O. H. TITTMANN, 1908-1916
E. C. BARNARD, 1916-1921
E. LESTER JONES, 1921
HIS BRITANNIC MAJESTY'S COMMISSIONER W. F. KING, 1908-1916
J. J. McARTHUR, 1917

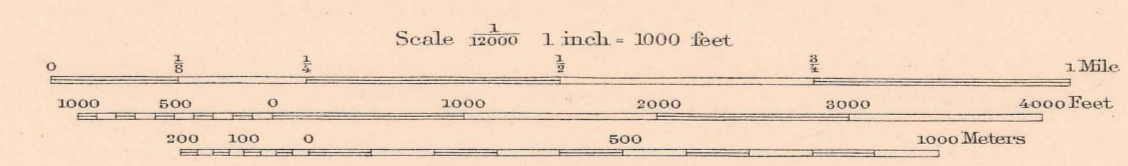
IN ACCORDANCE WITH ARTICLE III OF THE TREATY OF 1808.



C A N A D A
N E W B R U N S W I C K
M A D A W A S K A C O U N T Y
A R O O S T O O K
C O U N T Y
M A I N E
U N I T E D S T A T E S

FOR HIS MAJESTY
J. D. CRAIG, D. L. S., ENGINEER TO THE COMMISSION
SURVEYOR IN CHARGE: G. C. RAINBOTH, D. L. S., 1909
CONTROL BY G. L. RAINBOTH, I. R. FOUNDER, AND
W. M. DENNIS, 1909, AND J. L. BARNH, D. L. S., 1916
TOPOGRAPHY BY I. R. FOUNDER, 1909
MONUMENTING BY G. C. RAINBOTH, D. L. S., 1909
INSPECTION BY G. C. RAINBOTH, D. L. S., 1909

FOR THE UNITED STATES
JAMES H. VAN WAGENEN, ENGINEER TO THE COMMISSION
SURVEYORS IN CHARGE: J. B. BAYLOR, 1909, AND
F. H. BRUNDAGE, 1917
CONTROL BY R. H. BLAIN AND W. B. GILMORE, 1909, AND
F. H. BRUNDAGE, 1917
TOPOGRAPHY BY F. H. BRUNDAGE, 1909 AND 1917
MONUMENTING BY J. B. BAYLOR, 1909, AND
F. H. BRUNDAGE, 1917
INSPECTION BY J. B. BAYLOR, 1909, AND
F. H. BRUNDAGE, 1917



Timbered Areas
Disturbance
Swamp

International Boundary Line
Boundary Turning Points (not marked)
Boundary Monuments
Boundary Reference Marks:
Iron monuments on islands, or
concrete incrustations on shores
Bronze posts, 8 in. high, on islands, or
bronze tablets, set in concrete, on shore

We certify that this map is one of the quadruplicate set of sixty-one (61) maps adopted under Article III of the Treaty between Great Britain and the United States, signed at Washington April 11, 1808, and that we have re-established by the Commissioners designated above, in accordance with the provisions of the said Article.
Signed January 24, 1923.
W. F. King
His Britannic Majesty's Commissioner
E. Lester Jones
United States Commissioner