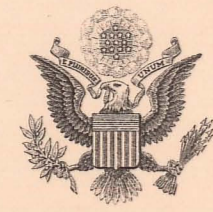


INTERNATIONAL BOUNDARY

FROM THE ST. LAWRENCE RIVER
TO THE SOURCE OF THE ST. CROIX RIVER

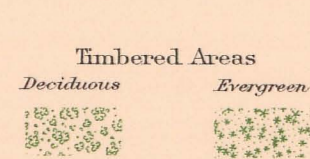
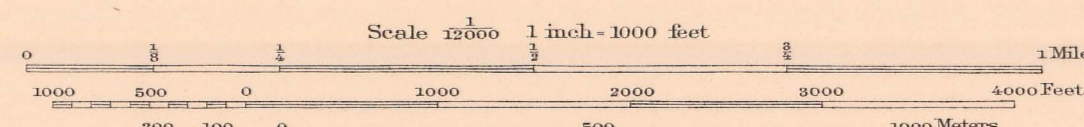
SHEET No. 50

SURVEYED UNDER THE DIRECTION OF
UNITED STATES COMMISSIONER HIS BRITANNIC MAJESTY'S COMMISSIONER
O. H. TITTMANN, 1908-1915 W. F. KING, 1908-1916
E. C. BARNARD, 1915-1921 J. J. McARTHUR, 1917
L. LESTER JONES, 1922
IN ACCORDANCE WITH ARTICLE III OF THE TREATY OF 1808



FOR THE UNITED STATES
JAMES H. VAN WAGENEN, ENGINEER TO THE COMMISSION
SURVEYORS IN CHARGE: J. B. BAYLOR, 1910, AND
F. H. BRUNDAGE, 1917
CONTROL BY R. H. BLAIN AND L. J. YOUNG, 1910, AND
F. H. BRUNDAGE, 1917
TOPOGRAPHY BY F. H. BRUNDAGE, 1910 AND 1917
MONUMENTING BY J. B. BAYLOR, 1910, AND F. H. BRUNDAGE, 1917
INSPECTION BY J. B. BAYLOR, 1910, AND F. H. BRUNDAGE, 1917

FOR HIS MAJESTY
J. D. CRAIG, D. L. S., ENGINEER TO THE COMMISSION
SURVEYOR IN CHARGE: G. C. RAINBOTH, D. L. S., 1910, AND
C. L. BARNETT, D. L. S., 1910, AND
J. L. RANNEY, D. T. S., 1915
TOPOGRAPHY BY I. R. FOUNDER, 1910
MONUMENTING BY G. C. RAINBOTH, D. L. S., 1910
INSPECTION BY G. C. RAINBOTH, D. L. S., 1910



International Boundary Line
Boundary Tinning Points (not marked)
Boundary Reference Marks:
Iron monuments on islands, or
concrete monuments on shore
Bronze posts, 8 in. high, on islands, or
brass tablets, set in concrete, on shore

We certify that this map is one of the quadruplicate set of sixty-one (61) maps
adopted under Article III of the Treaty between Great Britain and the United States,
signed at Washington April 11, 1808, and that we have marked thereon the Boundary
Line as re-established by the Commissioners designated above, in accordance with the
provisions of the said Article.
Signed October 11, 1922.
J. J. McArthur His Britannic Majesty's Commissioner
L. Lester Jones United States Commissioner